

Pleasant Valley
PWS 7854312
nontransient noncommunity water system

2055 Pleasant Valley road
Niles, Ohio 44446

LC 201- reception sink - tier 2
LC 202- men's locker room - sink #4 - tier 2
LC 203- men's locker room - sink #1 - tier 2
LC 204- ladies locker room - sink #3 - tier 2
LC 205- ladies locker room - sink #3 - tier 2

plastic pipe (pvc) used in water room
well #1- located at southeast of building - service line plastic
well #2- located at southeast of building - service line plastic

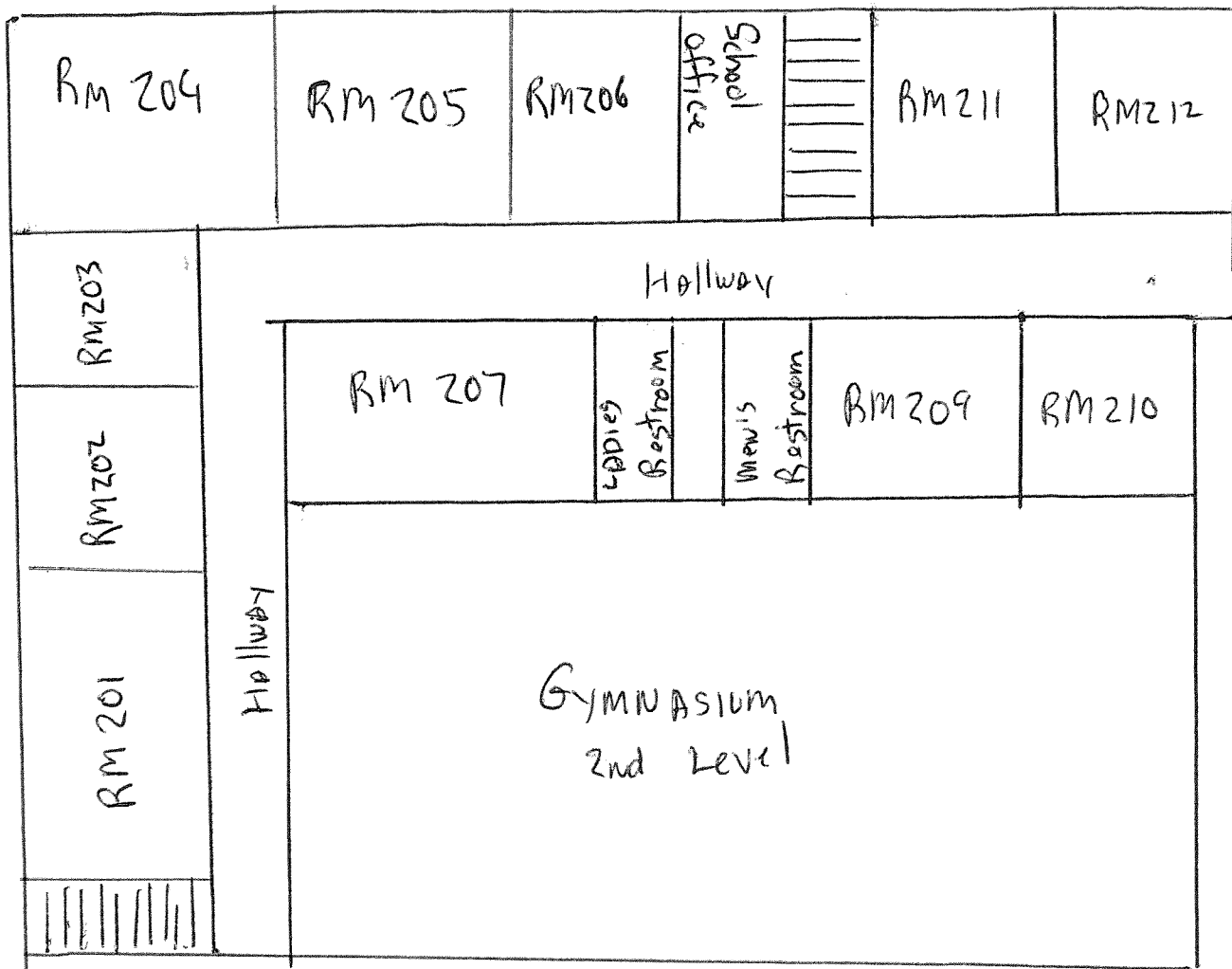
water line enters the corner of room 106
changes from plastic to copper with solder fitting.

water room is between men's locker and ladies locker room on the first floor.
once in the water room, the water line changes back to pvc.

in the water room sodium hypochlorite and phosphate is injected into the water.
next comes the bladder tanks (3 -40 gallons). then a chlorine contact (250
gallons). then it goes to iron filters. after the iron filters are softeners,

also in the water room is a RO unit that is supplied water after the softeners for
the drinking water fountains in the building. the drinking water fountains water
lines are pvc. a single 40 gallons bladder tank for the water after the RO unit.

water lines for the restrooms changes back to copper with solder fitting once
they leave the water room

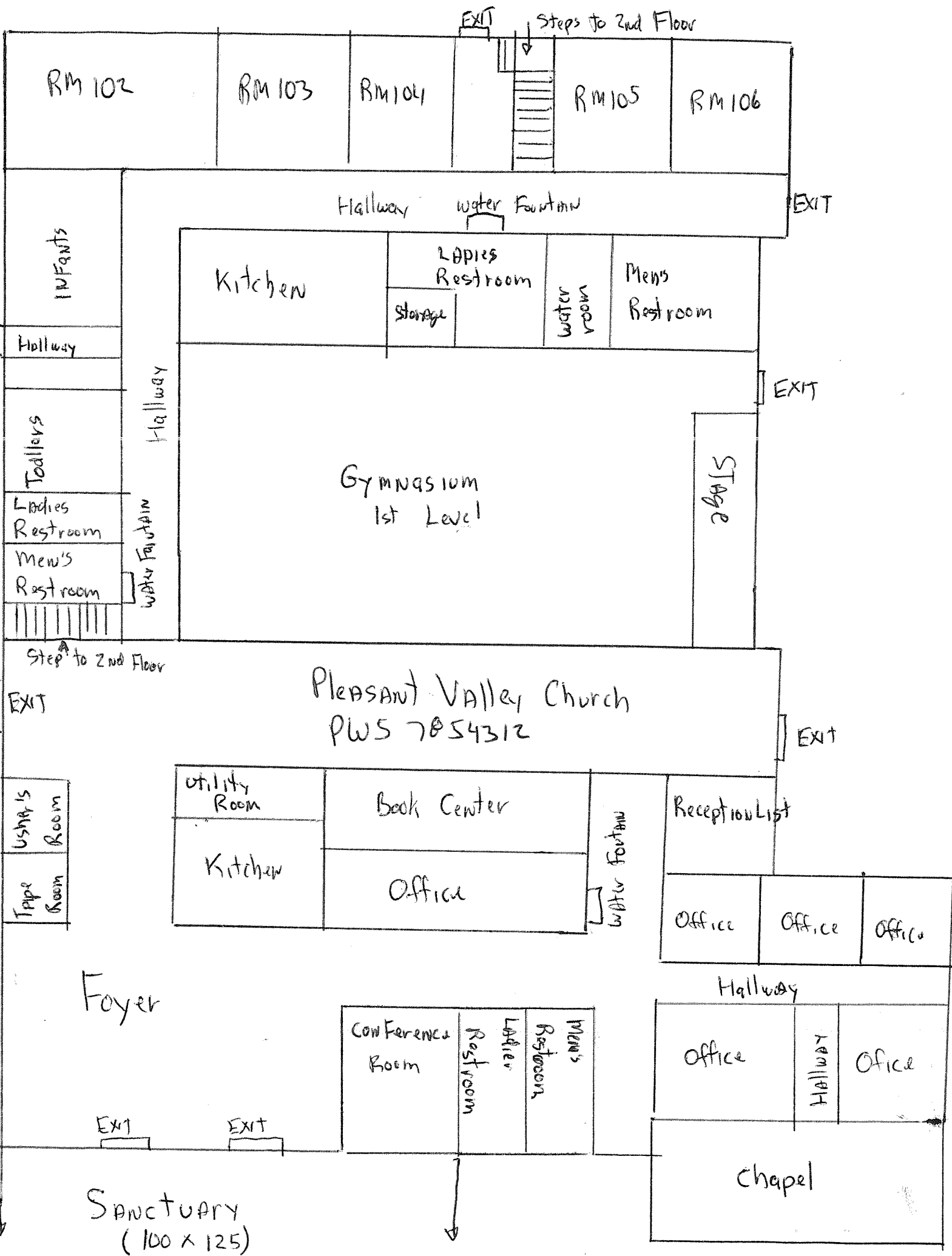


Pleasant Valley Church
 PWS 7854312
 (Second Floor)

RECEIVED

MAR 08 2017

OHIO EPA NEDO



PLEASANT VALLEY CHURCH AND SCHOOL Lead Map Narrative revised 4-24-19
2055 Pleasant Valley Rd
Niles, OH 44446

PWS ID OH7854312
NTNC SYSTEM
TRUMBULL COUNTY

Updated Lead Map Narrative – 4-24-19

WELL #1 – Sealed 4-19-19
WELL #2 - South – service line is plastic
WELL #3 - North – service line is plastic

Waterline enters the building in the corner of room 106 at this point it changes from plastic to soldered copper.

The Water Treatment Room is located on the first floor between the men's and women's locker rooms. In the Water Treatment Room, the water line is PVC.

Treatment consist of chlorine and polyphosphate injection, contact tank, media filters and softeners.

An RO system treats softened water for the drinking fountains and kitchen sinks, these waterlines are PVC.

Soldered copper lines supply water to the rest of the building.