



Village of New Concord Public Water System Lead (Pb) Components

PWSID# 6001711

Prepared February 2017

To comply with Section 6109.21 of the Ohio Revised Code, enacted in September 2016, the Village of New Concord in Muskingum County, Ohio has created the following report and attached map to identify known and potential components of water service lines that contain lead (Pb).

The following information and attached map do not verify the presence of lead in any of the plumbing components or structures shown. The information and map only show the probable or possible locations based on the year that structures were built, or by the year that the plumbing component was installed.

RCAP staff and the Village of New Concord Water Department met on December 6th, 2016 to review a map of the service area. No applicable historical maintenance and operation records, tap cards, or as-builts were available to identify lead component locations. Locations where lead service components have been replaced, and locations where lead components are likely still being used, were identified by the Village of New Concord Water Department and recorded in a GIS database.

Public and Private Ownership of Service Lines

The Village of New Concord Water Department distributes water to 703 parcels. The Village owns and maintains service lines from the water distribution mains up to the curb stops for each water customer. The remainder of each service line from the curb stop to the building is the responsibility of the property owner.

The tables below provide information about the possibility of lead service lines and use of leaded plumbing materials to the customers New Concord serves. The year the structure was built determines which category it falls into.

Public Service Line Lead Probability		
Possibility of Lead	Public Lines #	% of System
Very Likely or Verified Lead	64	9.10%
Non-Lead	83	11.81%
≤ 8% Lead Alloy	35	4.98%
Very High Probability	225	32.01%
Moderate Probability	206	29.30%
Low Probability	37	5.26%
No Data	53	7.54%

Private Service Line Lead Probability		
Possibility of Lead	Private #	% of System
Very Likely or Verified Lead	64	9.10%
Non-Lead	6	0.85%
≤ 8% Lead Alloy	35	4.98%
Very High Probability	266	37.84%
Moderate Probability	239	34.00%
Low Probability	40	5.69%
No Data	53	7.54%

Distribution System

Within the distribution system, none of the pipes themselves are known to contain any lead, however, there are joints, valves, and fittings within the system that may contain lead.

Water meters at each customer location may contain more than 8% lead. Meters installed after 1998 may contain up to 8% lead. Meters installed after 2014 will have less than 0.25% lead.

The Village of New Concord has approximately 19 miles of water main lines. The table below shows which lines may or may not have lead solder, valves, or fittings according to pre or post regulation.

Probability of Lead Solder and Fittings in Water Main		
Lead in Water Main Materials	Feet of Pipe	% of System
Probable (material typical pre-1998)	41424.67	41.32%
Improbable (material typical post-1998)	58839.44	58.68%

Indoor Plumbing

Buildings in Ohio built prior to 1998 or that use plumbing material or solder manufactured before 1998 may have materials with greater than 8% lead and are at a higher risk of contributing lead to the drinking water than materials manufactured after 1998.

Buildings built and plumbing materials manufactured after 2014 were required to have less than 0.25% lead by weight and have the lowest risk for contributing lead to the drinking water. It should be noted however that, although prohibited, some use of leaded solder or leaded components may have occurred after the prohibitions became effective.

In New Concord, only 5 properties are known to have structures built since 2014, and therefore nearly all buildings in the village may have some lead in the solder or fixtures.

Customer Self-Reporting

The information on this map regarding privately owned service lines is based on the limited information from the water system staff and Muskingum County building and parcel data. Property owners are encouraged to inspect their own service lines entering the building if these are in anyway exposed, and notify the Village of New Concord Water Department if they have determined whether or not a lead service line exists. Please contact the Water Billing Clerk by calling (740) 826-7671 or sending an email to jjohnson@newconcord-oh.gov. A representative from the water department will contact you to confirm and update this information for the next map release.

Contacts and Resources

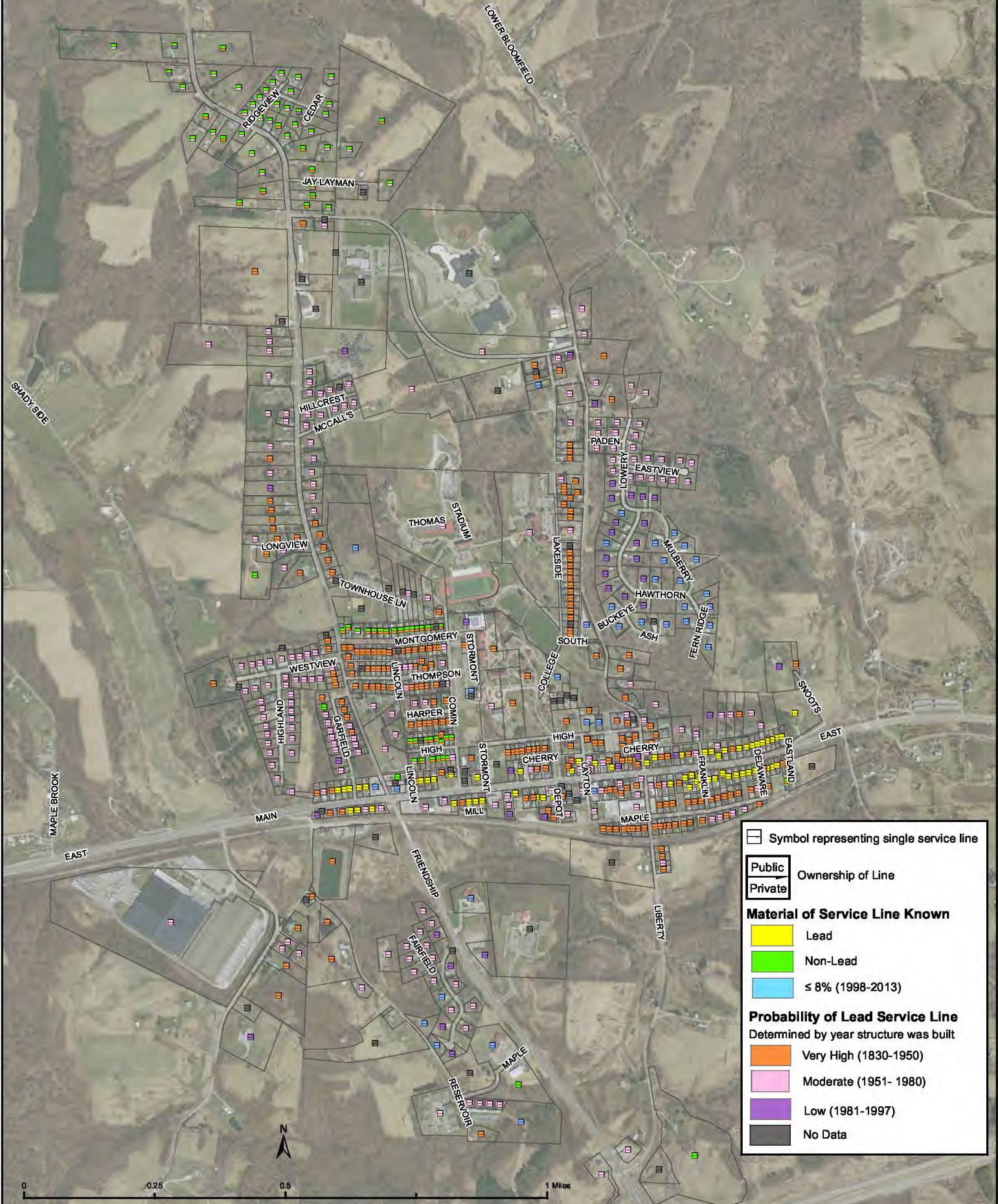
If you have questions about known and potential lead components within the Village of New Concord Public Water System, please contact:

Charlotte Colley
2 West Main Street
New Concord, Ohio 43762
Phone: (740) 826-7671

For more information about lead service lines and their removal, we recommend the following resources:

- **The Lead Service Line Replacement Collaborative**
<http://www.lslr-collaborative.org/resources-for-concerned-consumers.html>
- **Ohio EPA 'Learn About Lead' page**
<http://epa.ohio.gov/pic/lead.aspx>
- **US EPA Lead in Drinking Water Information Page**
<https://www.epa.gov/ground-water-and-drinking-water/basic-information-about-lead-drinking-water>

New Concord, OH Lead Pipe Water Services



Symbol representing single service line

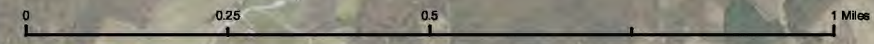
Public	Ownership of Line
Private	

Material of Service Line Known

- Lead
- Non-Lead
- ≤ 8% (1998-2013)

Probability of Lead Service Line
Determined by year structure was built

- Very High (1830-1950)
- Moderate (1951- 1980)
- Low (1981-1997)
- No Data



This map does not verify the presence of lead in any of the lines or structures shown. This map only shows the probable or possible locations based on the year that the structure was built, historical maintenance and operation records, and customer or utility staff verification. This map is not intended for design engineering, surveying, or construction purposes. Information and data contained or accessed within this map emanates from various public and private sources and may contain errors and omissions. This map remains under development and is subject to change with or without notice. All data, information and documentation within this map are provided "as is" without warranty of any kind, either expressed or implied. The suitability of the data and information contained in this map is not guaranteed, and the user assumes all risk for such uses. WSOS, Community Action and its employees, affiliates, agents and licensors cannot and do not warrant the accuracy, completeness, non-infringement, merchantability or fitness of any information contained within this map. All questions, comments and data errors should be directed to Ohio RCAP by phone at 330-329-9961 or by email at dbdyeler@wsos.org. Sources: OGRIP, Muskingum County Auditor, RCAP GIS. Datum/Projection: NAD 1983 Ohio State Plane South (ft) Date: 2/1/2017