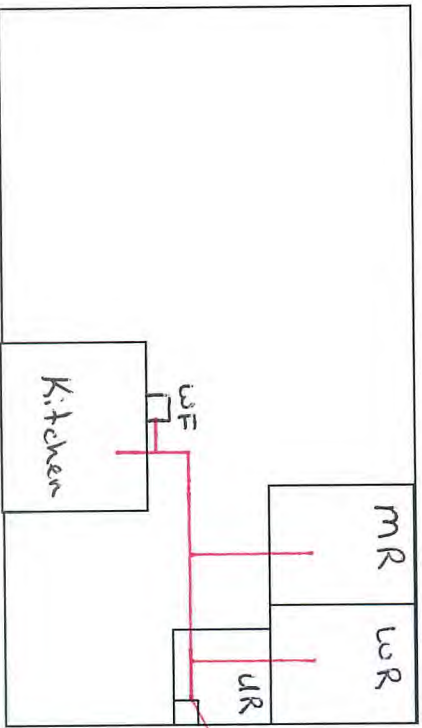
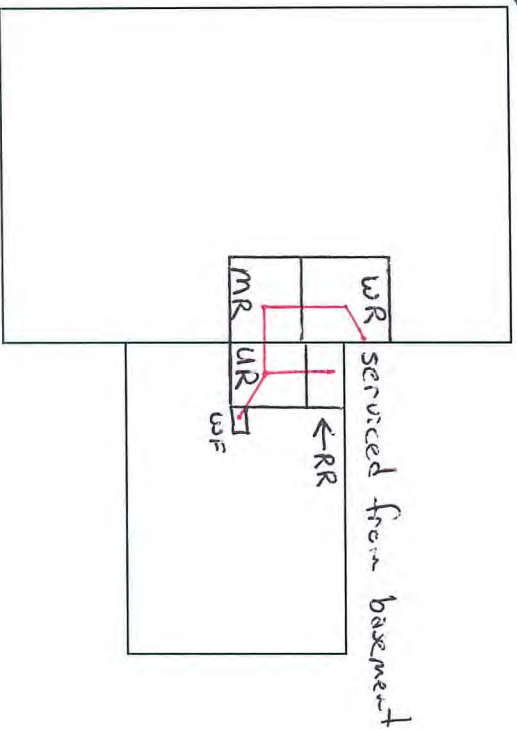


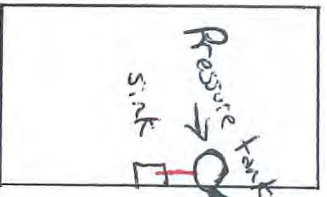
Buildings in Ohio built prior to 1998 or that use plumbing material or solder manufactured before 1998 may have materials with greater than 8% lead and are at a higher risk of contributing lead to the drinking water than materials manufactured after 1998. In addition, buildings built and plumbing materials manufactured after 2014 were required to have less than 0.25% lead by weight and have the lowest risk for contributing lead to the drinking water. It should be noted however that, although prohibited, some use of leaded solder or leaded components may have occurred after the prohibitions became effective. The church building we built in 1984 and the school was added in 2004. All service lines are plastic and can be seen coming thru the wall. All interior water lines are copper.



School Main Level

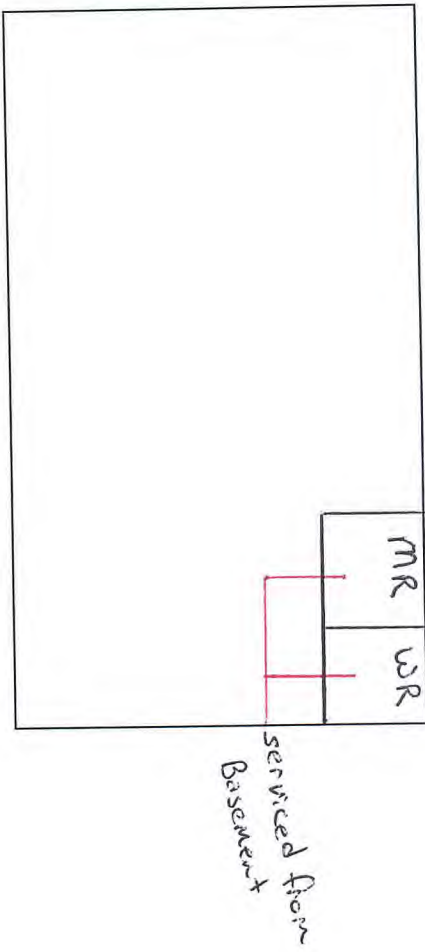


Church Main Level

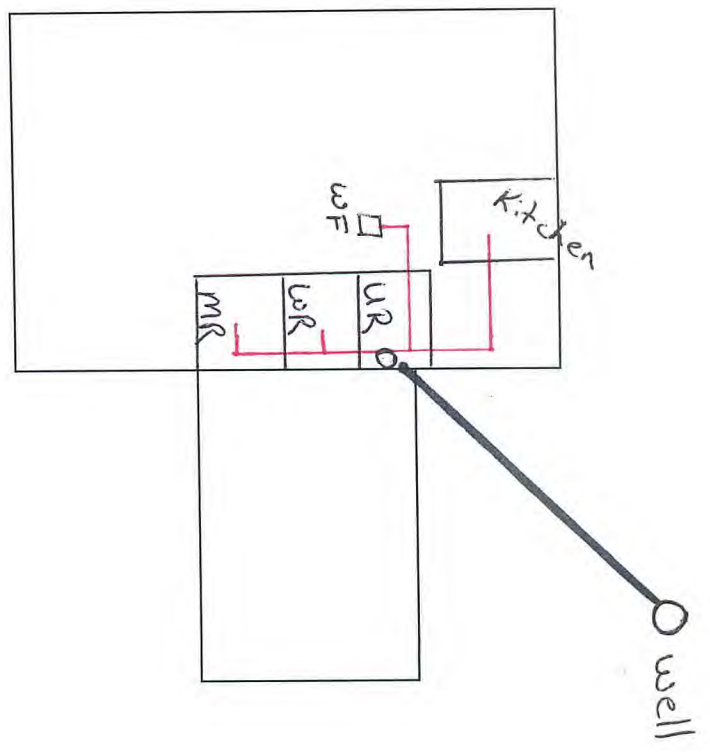


Well

Simon Reorganization



School Upper Level



Church Basement

Legend

- WF - Water fountain
- Plastic service line
- Copper Pipe
- MR - Mens restroom
- WR - Womens restroom
- UR - Utility room