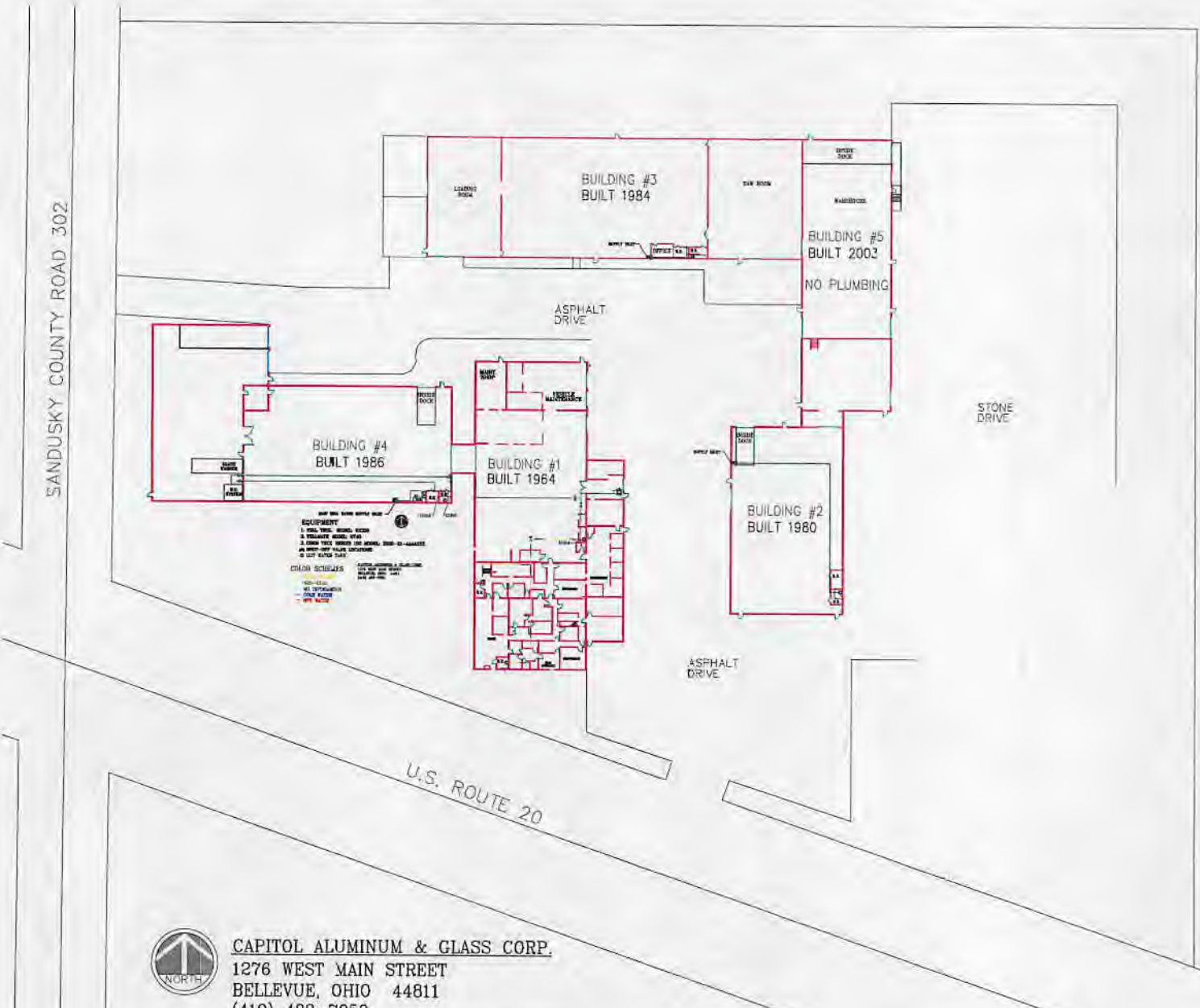


RE: Capitol Aluminum and Glass
Report
Drinking Water Program
Sandusky County
PWS ID: OH7251712

RECEIVED

FEB 07 2017

DDAGW - NWDO

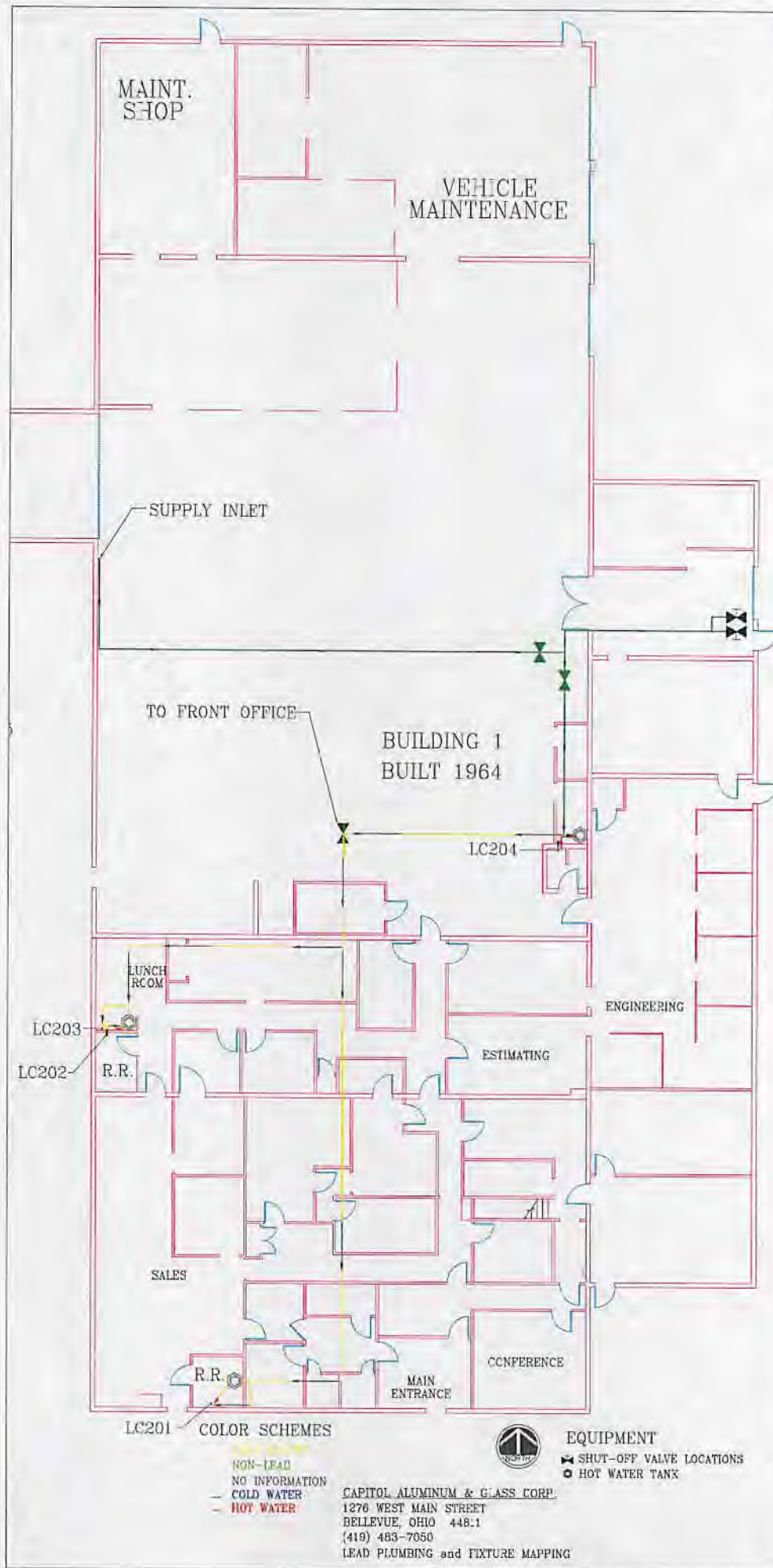


CAPITOL ALUMINUM & GLASS CORP.
 1276 WEST MAIN STREET
 BELLEVUE, OHIO 44811
 (419) 483-7050
 LEAD PLUMBING and FIXTURE MAPPING

RECEIVED

FEB 07 2017

DDAGW - NWDO



NON-LEAD
 NO INFORMATION
 - COLD WATER
 - HOT WATER



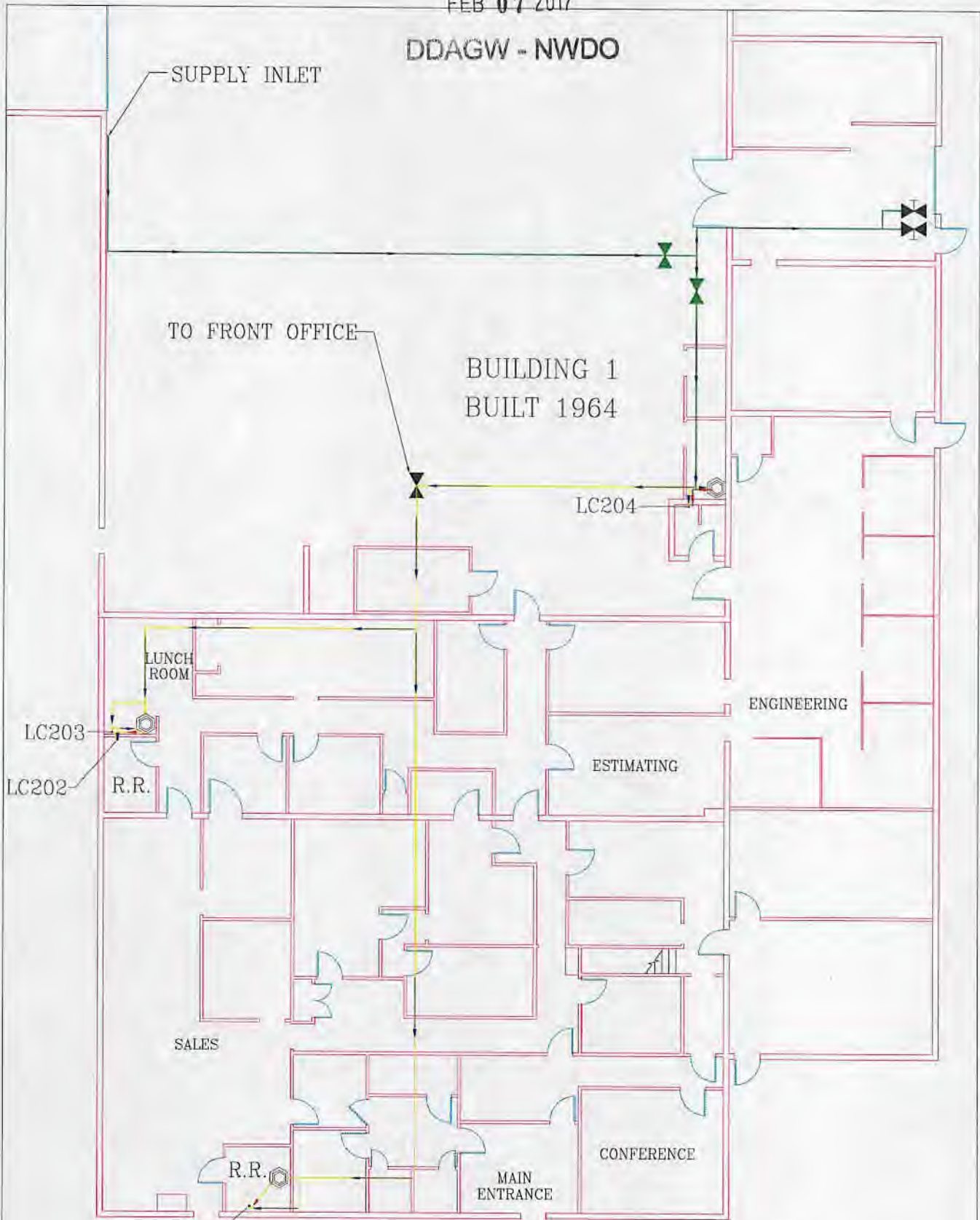
CAPITOL ALUMINUM & GLASS CORP.
 1276 WEST MAIN STREET
 BELLEVUE, OHIO 44811
 (419) 463-7050
 LEAD PLUMBING and FIXTURE MAPPING

EQUIPMENT
 X SHUT-OFF VALVE LOCATIONS
 O HOT WATER TANK

RECEIVED

FEB 07 2017

DDAGW - NWDO



LC201 COLOR SCHEMES

- LEAD SOLDER
- NON-LEAD
- NO INFORMATION
- COLD WATER
- HOT WATER



EQUIPMENT

- ✕ SHUT-OFF VALVE LOCATIONS
- HOT WATER TANK

CAPITOL ALUMINUM & GLASS CORP.

1276 WEST MAIN STREET

BELLEVUE, OHIO 44811

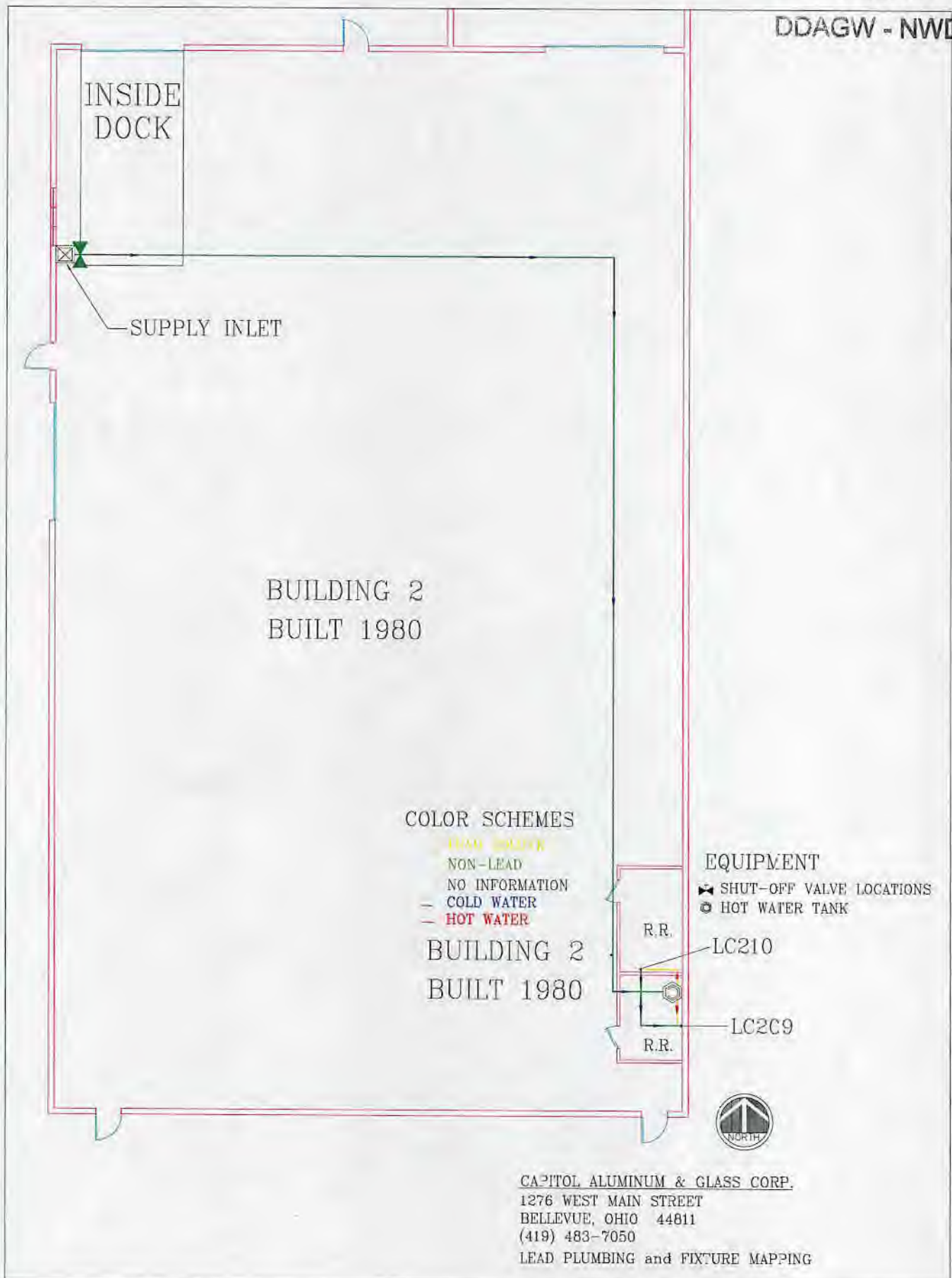
(419) 483-7050

LEAD PLUMBING and FIXTURE MAPPING

RECEIVED

FEB 07 2017

DDAGW - NWDO



CAPITOL ALUMINUM & GLASS CORP.
1276 WEST MAIN STREET
BELLEVUE, OHIO 44011
(419) 483-7050
LEAD PLUMBING and FIXTURE MAPPING

RECEIVED

FEB 07 2017

DDAGW - NWDO

BUILDING 2
BUILT 1980

COLOR SCHEMES

LEAD SOLDER

NON-LEAD

NO INFORMATION

- COLD WATER

- HOT WATER

BUILDING 2
BUILT 1980

EQUIPMENT

SHUT-OFF VALVE LOCATIONS

HOT WATER TANK

R.R.

LC210

LC209

R.R.



CAPITOL ALUMINUM & GLASS CORP.

1276 WEST MAIN STREET

BELLEVUE, OHIO 44811

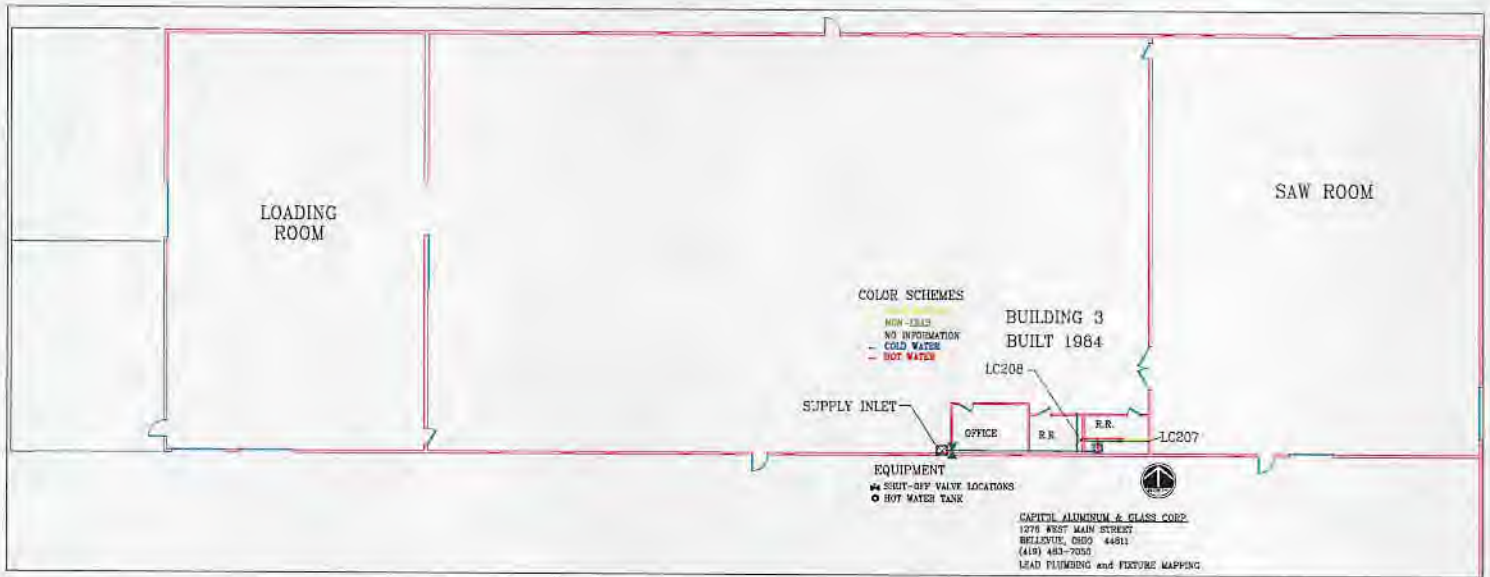
(419) 483-7050

LEAD PLUMBING and FIXTURE MAPPING

RECEIVED

FEB 07 2017

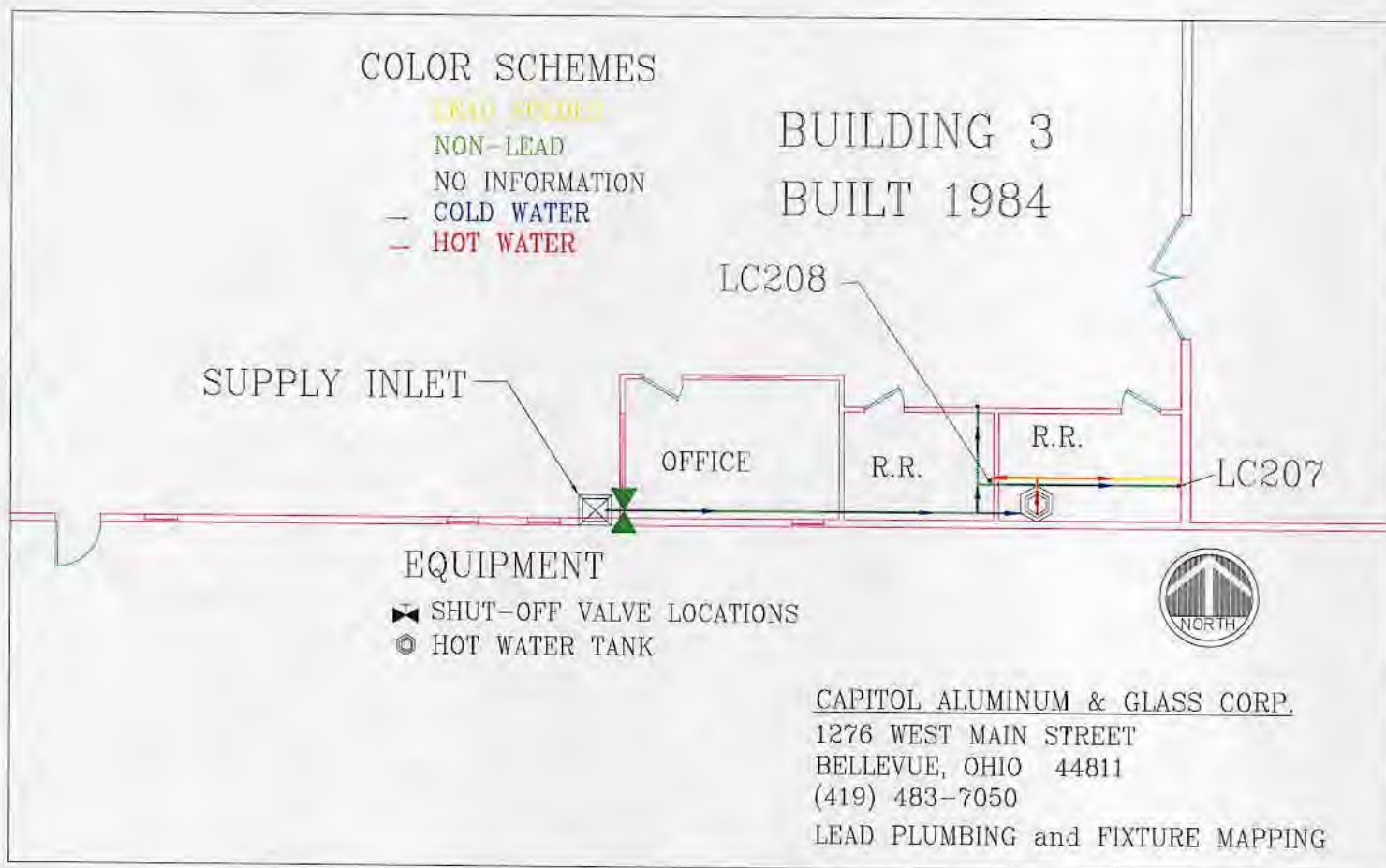
DDAGW - NWDO



RECEIVED

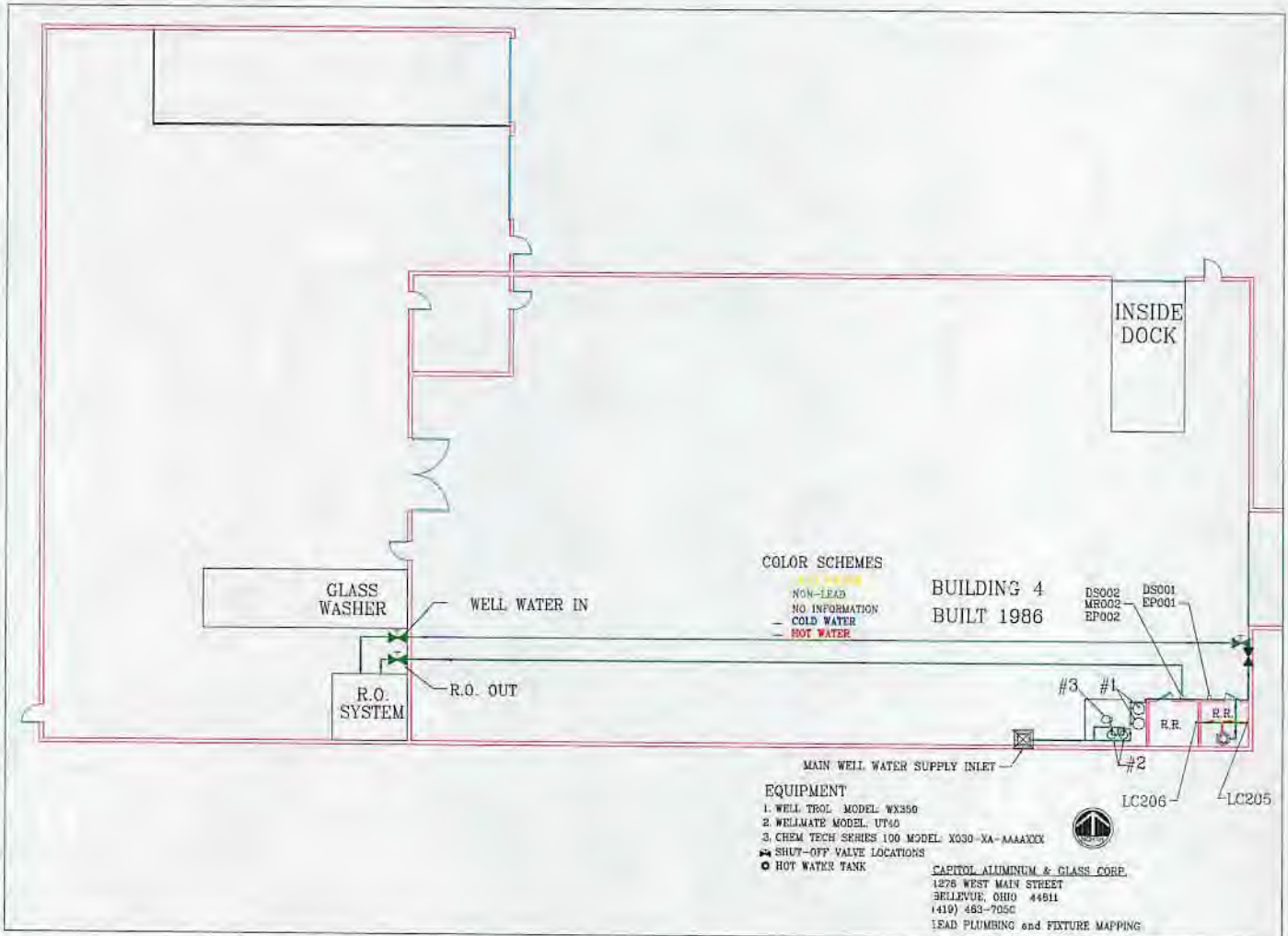
FEB 07 2017

DDAGW - NWDO



RECEIVED

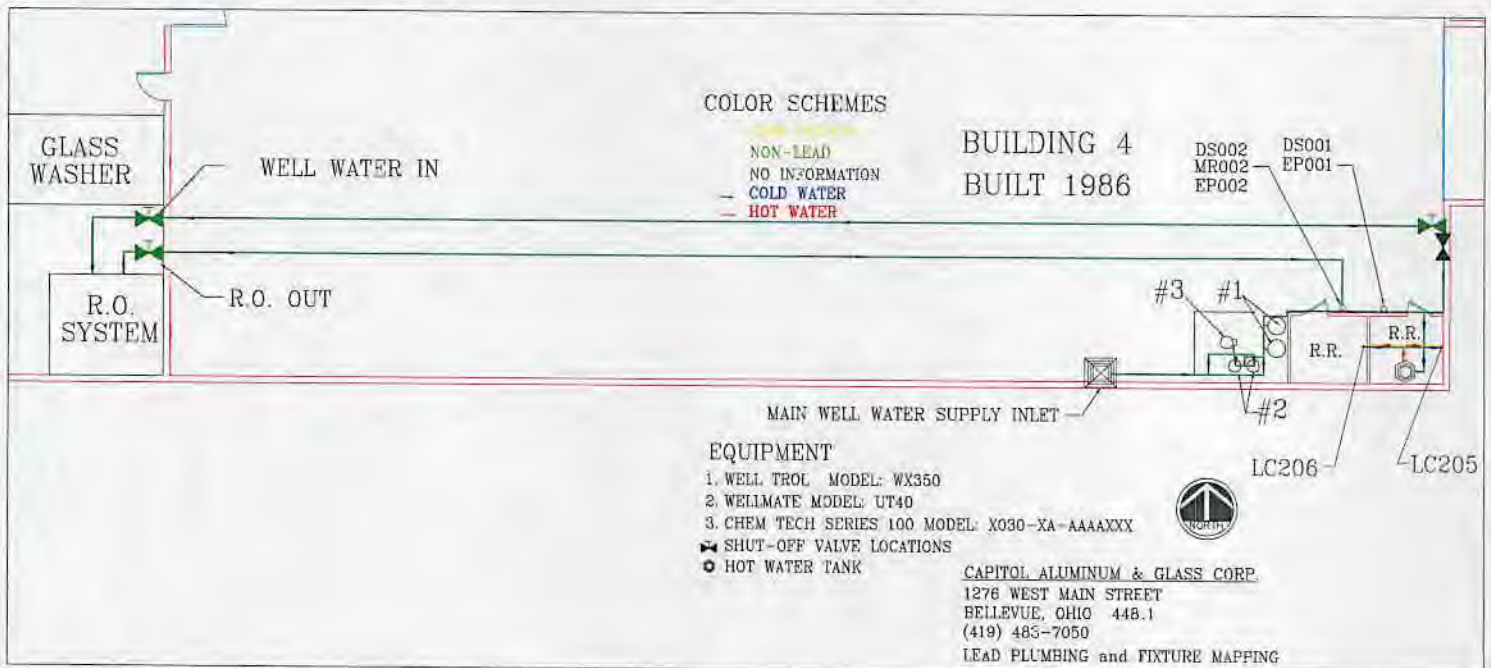
FEB 07 2017



RECEIVED

FEB 07 2017

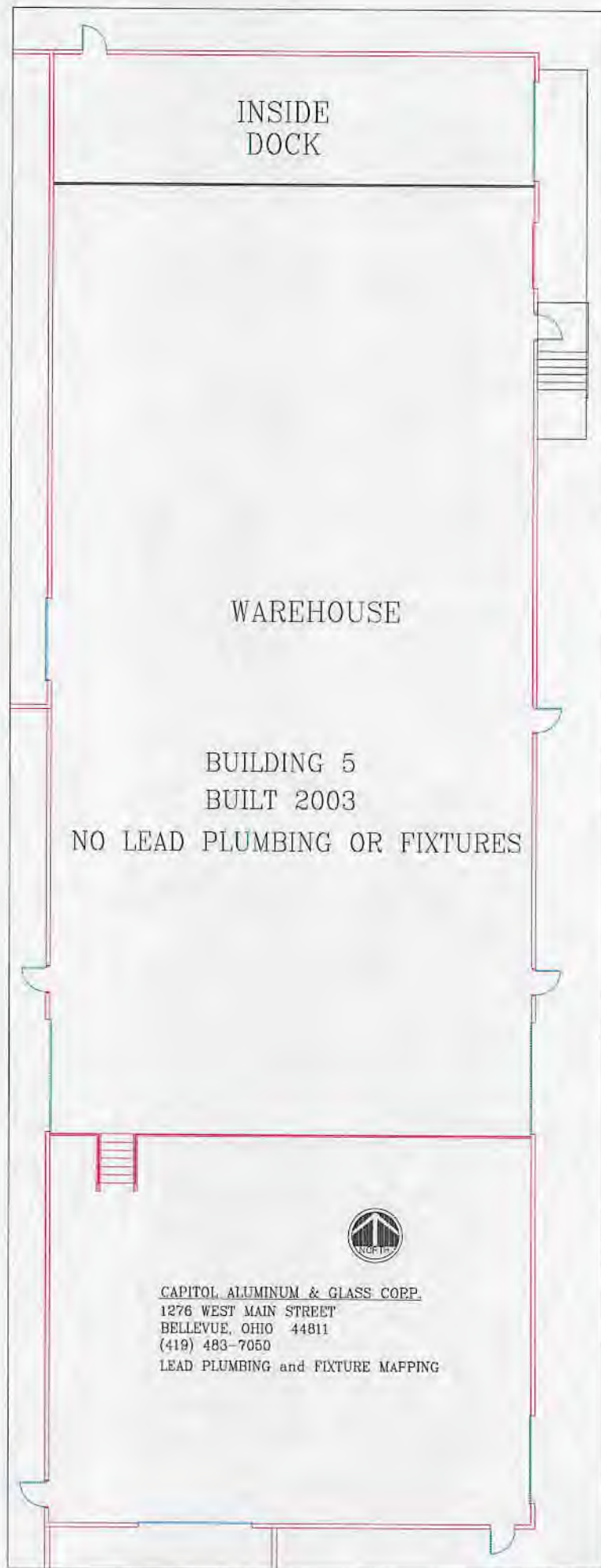
DDAGW - NWDO



RECEIVED

FEB 07 2017

DDAGW - NWDO



INSIDE
DOCK

WAREHOUSE

BUILDING 5
BUILT 2003
NO LEAD PLUMBING OR FIXTURES



CAPITOL ALUMINUM & GLASS CORP.
1276 WEST MAIN STREET
BELLEVUE, OHIO 44811
(419) 483-7050
LEAD PLUMBING and FIXTURE MAPPING