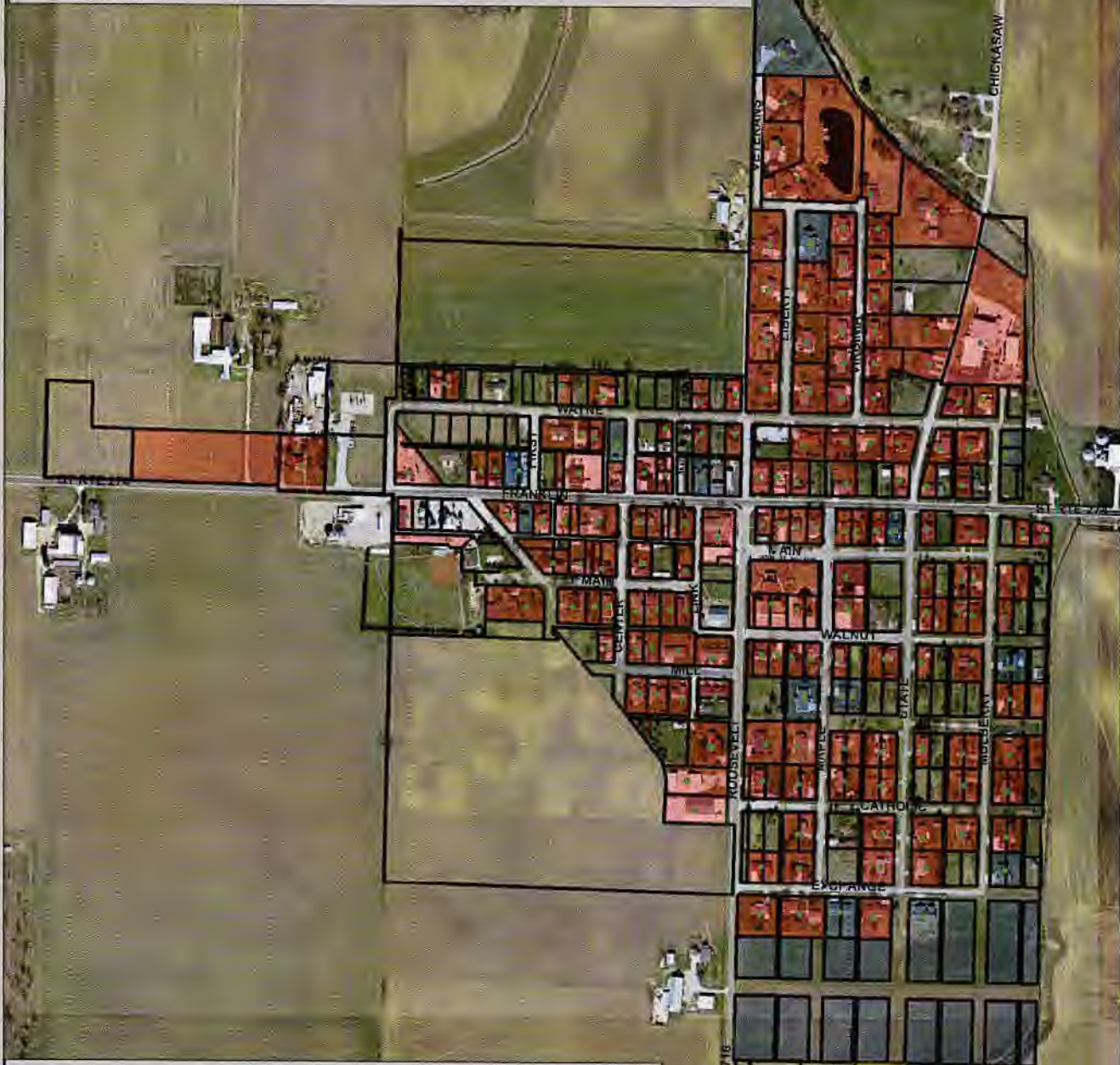


RE: Village of Chickasaw
Report
Drinking Water Program
Mercer County
PWS ID: OH5402212

Buildings built prior to 1998 or that use plumbing material or solder manufactured before 1988 may have materials with greater than 8% lead and are at a higher risk of contributing lead to the drinking water than materials manufactured after 1988. In addition, buildings built and plumbing materials manufactured after 2014 were required to have less than 0.2% lead by weight and have the lowest risk for contributing lead to the drinking water. It should be noted however that, although prohibited, some use of leaded solder or leaded components may have occurred after the prohibitions became effective.



Legend:

- No Information, No Information
 - No Information, Non-Lead
 - No Information, Lead
 - Non-Lead, No Information
 - Non-Lead, Non-Lead
 - Non-Lead, Lead
 - Lead, No Information
 - Lead, Non-Lead
 - Lead, Lead
 - Building Built Before 1998 (May Have Plumbing Materials With Greater Than 8% Lead)
 - Building Built Between 1998 and 2014 (Plumbing Materials May Have Less Than 8% Lead)
 - Buildings Built After 2014 (Plumbing Materials May Be Less Than 0.25%)
- Merger_LBRS_Centlines

Date: 2/7/2017



400 200 0 400 800 Feet

Village of Chickasaw Lead and Copper Map

RECEIVED
 FEB 07 2017
 DDAGW - NWDO