

RE: Ottoville Village
Report
Drinking Water Program
Putnam County
PWS ID: OH6900812

**VILLAGE OF OTTOVILLE
UTILITIES DEPARTMENT
P.O. BOX 488
419-453-3147**

RECEIVED

FEB 16 2017

OHIO E.P.A.
N.W.D.O.

PWS ID: OH6900812

GENERAL HISTORICAL NARRATIVE OF THE OTTOVILLE WATER DISTRIBUTION SYSTEM

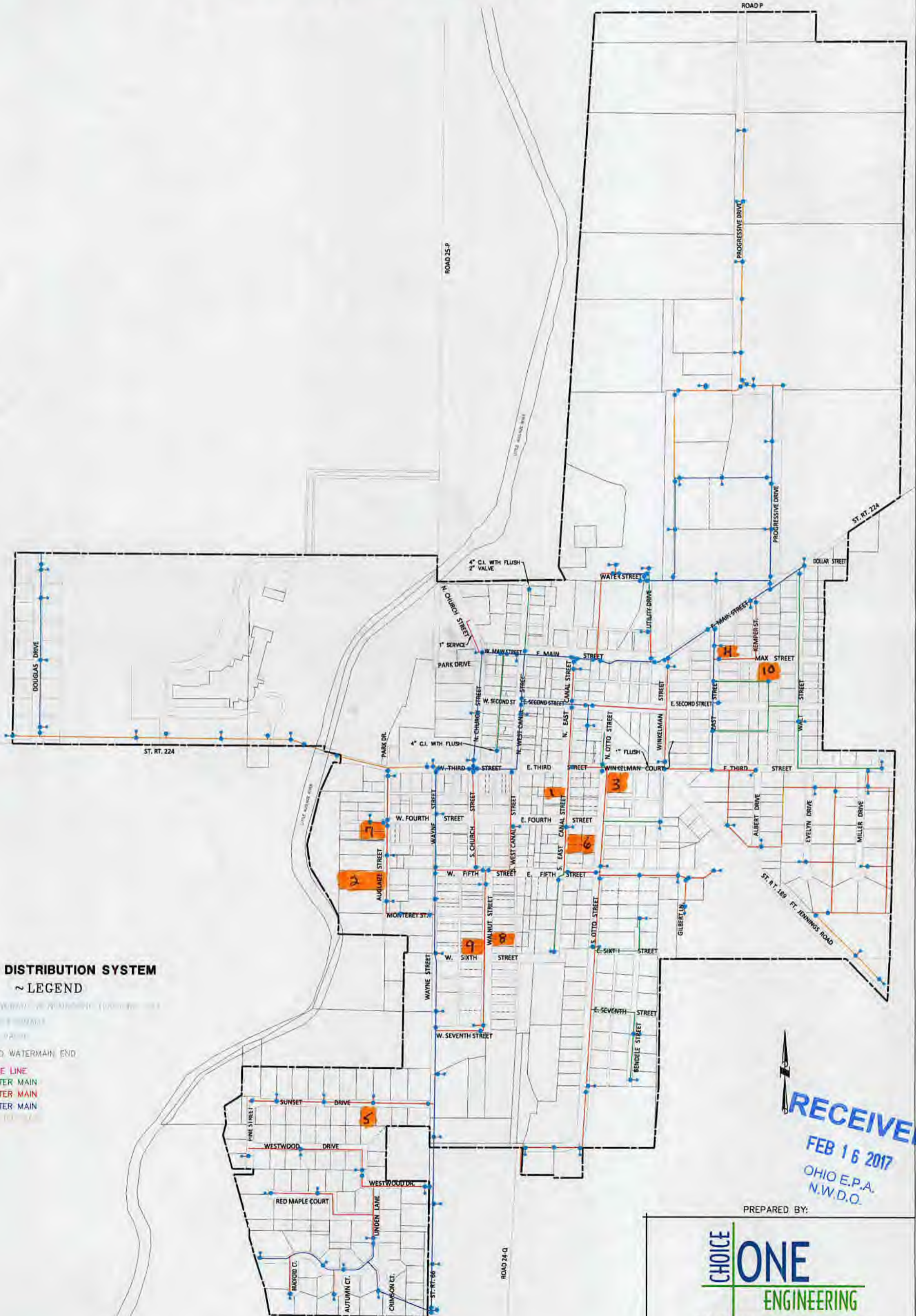
OTTOVILLE'S WATER WORKS WAS ESTABLISHED IN THE LATE 1940'S. BY THE MID 1950'S, THE VILLAGE WAS PRODUCING AND PROVIDING WATER TO CUSTOMERS WITHIN THE CORPORATION LIMITS. BECAUSE WATER METERS WERE NOT USED, A MONTHLY CHARGE OF \$3.50 WAS DECIDED. IT WOULD BE THIS WAY FOR ALMOST 25 YEARS WHEN THE SANITARY SEWER SYSTEM WAS BUILT AND NEEDING A MORE REPRESENTATIVE RATE CHARGE INDIVIDUAL METERS WERE INSTALLED, MOSTLY INSIDE BUILDINGS. METERS HAVE SINCE BEEN REPLACED BY THE VILLAGE UTILITY DEPARTMENT. WE CONTINUE TO BUILD KNOWLEDGE OF OUR DISTRIBUTION SYSTEM PLUMBING WITH EVERY WATER MAIN OR METER REPLACEMENT.

DUE TO THE FACT THAT NO MAPS WERE FOUND OF OTTOVILLE'S ORIGINAL WATERLINES; DETAILED INFORMATION AS TO THE MATERIAL USED, SIZE OF PIPE FOR WATER MAIN DISTRIBUTION LINES PLUS INDIVIDUAL SERVICE LINES WAS DOCUMENTED AND MAPPED BY PAST VILLAGE EMPLOYEES AND LOCAL CONTRACTORS. 4", 6" & 8" CAST IRON MAINS WITH 3/4" & 1" COPPER SERVICELINES WERE PARTS OF THE ORIGINAL SYSTEM. SOME OF THESE ARE STILL IN SERVICE BUT PLASTIC HAS REPLACED MANY OF THE OLD MAINS. COPPER SERVICE LINES ARE STILL RECOMMENDED, PER ORDINANCE, BUT PLASTIC IS NOW ACCEPTED IN ALL NEW CONSTRUCTION, BE IT AN INDIVIDUAL DEVELOPER OR VILLAGE UPGRADES.

BUILDINGS IN OHIO BUILT PRIOR TO 1998 OR THAT USE PLUMBING MATERIAL OR SOLDER MANUFACTURED BEFORE 1998 MAY HAVE MATERIALS WITH >8% LEAD AND ARE AT A HIGHER RISK OF CONTRIBUTING LEAD TO THE DRINKING WATER THAN MATERIALS MANUFACTURED AFTER 1998. IN ADDITION, BUILDINGS BUILT AND PLUMBING MATERIALS MANUFACTURED AFTER 2014 WERE REQUIRED TO HAVE <0.25% LEAD BY WEIGHT AND HAVE THE LOWEST RISK FOR CONTRIBUTING LEAD TO THE DRINKING WATER. IT SHOULD BE NOTED HOWEVER, ALTHOUGH PROHIBITED, SOME USE OF LEADED SOLDER OR LEADED COMPONENTS MAY HAVE OCCURRED AFTER THE PROHIBITIONS BECAME EFFECTIVE.

IN 1988, IN COMPLYING WITH THE USEPA REGULATION FOR LEAD AND COPPER SAMPLING; A PUBLIC NOTICE AND HOME PLUMBING SURVEY WAS CONDUCTED. THOSE EFFORTS AND PREVIOUS KNOWLEDGE CONCLUDED THAT WE HAD NO LEAD SERVICE LINES ENTERING BUILDINGS. MOST OF OUR HOMES AT THAT TIME WERE BUILT AND PLUMBED BEFORE 1983. OUR MONITORING REQUIREMENTS WERE BASED ON POPULATION SERVED AND CALLED FOR TWO CONSECUTIVE 20 COUNT SAMPLES IN TWO SEPARATE SIX MONTH PERIODS. WE SAMPLED FOR LEAD & COPPER IN 1993 AND AGAIN IN 1994. OUT OF THE ORIGINAL 20 SAMPLES TAKEN, 13 WERE TIER 3 (CuPb<83) and 7 WERE TIER 1 (CuPb>83). SINCE ACTION LEVELS WERE NOT EXCEEDED FOR THE THOSE TWO PERIODS OUR REQUIREMENTS WERE REDUCED TO 10 SAMPLES STARTING IN 1995. WE SAMPLED YEARLY FROM 1995 THROUGH 1997. OUR RESULTS, NOT EXCEEDING ACTION LEVELS, FURTHER REDUCED THE SAMPLING REQUIREMENTS TO ONE MONITORING PERIOD EVERY THREE YEARS. WE HAVE SINCE BEEN ON A TRIENNIAL SAMPLING SCHEDULE USING 10 SITES: 5 TIER 3 SITES(CuPb<83) AND 5 TIER 1 SITES(CuPb>83). THE IMPORTANCE OF SAMPLING FOR LEAD AND COPPER HAS BEEN ADVANCING OVER THE YEARS. IN 2009 A NEW LEAD AND COPPER RULE TOOK EFFECT AND "CONSUMER NOTICE OF TAP WATER RESULTS" INITIATED. OUR 10 SAMPLE LOCATIONS WERE NOW GIVEN THE FINDINGS OF OUR WATER SAMPLES AND 'WHY' THEY WERE COLLECTED IN THE FIRST PLACE. IN 2012 THE RULE CHANGED AGAIN, WE WERE TO INCLUDE SPECIFIC SAMPLING INSTRUCTIONS FOR THE RESIDENTS OF THE SAMPLING SITES. WE WILL CONTINUE TO EDUCATE THE PUBLIC AS TO THE IMPORTANCE OF DRINKING WATER MONITORING AS IT RELATES TO HOUSEHOLD PLUMBING AND THOSE AFFECTS.

VILLAGE OF OTTOVILLE WATER MAIN



WATER DISTRIBUTION SYSTEM ~ LEGEND

- WATER MAIN END
- WATER MAIN END
- WATER MAIN END
- WATER MAIN END
- T CAPPED WATERMAIN END
- SERVICE LINE
- 4" WATER MAIN
- 6" WATER MAIN
- 8" WATER MAIN

RECEIVED
FEB 16 2017
OHIO E.P.A.
N.W.D.O.

PREPARED BY:

**CHOICE ONE
ENGINEERING**

440 E. HOEWISHER ROAD SIDNEY, OHIO 45365 (937) 497-0200
203 W. LOVELAND AVENUE LOVELAND, OHIO 45140 (513) 239-8554
www.choiceoneengineering.com