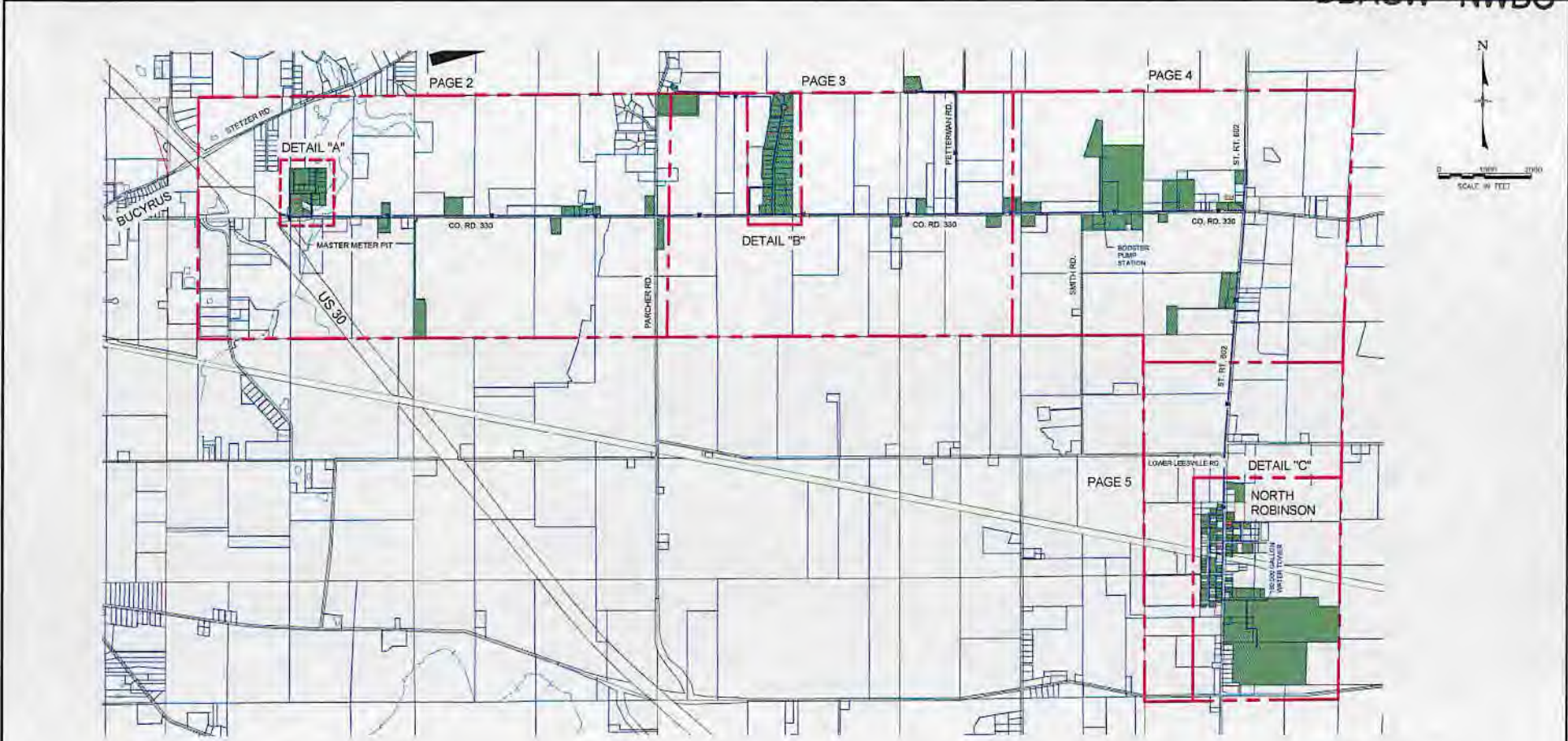


RE: Crawford Co Swr Dist No 2 PWS
Report
Drinking Water Program
Crawford County
PWS ID: OH1700703



NOTE:
 BUILDINGS IN OHIO BUILT PRIOR TO 1998 OR THAT USE PLUMBING MATERIAL OR SOLDER MANUFACTURED BEFORE 1998 MAY HAVE MATERIALS WITH GREATER THAN 8% LEAD AND ARE AT A HIGHER RISK OF CONTRIBUTING LEAD TO THE DRINKING WATER THAN MATERIALS MANUFACTURED AFTER 1998. IN ADDITION, BUILDINGS BUILT AND PLUMBING MATERIALS MANUFACTURED AFTER 2014 WERE REQUIRED TO HAVE LESS THAN 0.25% LEAD BY WEIGHT AND HAVE THE LOWEST RISK FOR CONTRIBUTING LEAD TO THE DRINKING WATER. IT SHOULD BE NOTED HOWEVER THAT, ALTHOUGH PROHIBITED, SOME USE OF LEADED SOLDER OR LEADED COMPONENTS MAY HAVE OCCURRED AFTER THE PROHIBITIONS BECAME EFFECTIVE.

- LEGEND**
- NON-FAD SERVICE CONNECTIONS
 - LEAD AND COPPER SAMPLE SITES

NOTES:
 ALL WATER DISTRIBUTION MAINS ARE PVC AND HDPE TUBING.
 ALL WATER SERVICE LINES ARE HDPE TUBING.

CASEMENT REFERENCE			REVISIONS			
City's No.	County Recorder Volume	Page	No.	Description	Approved	Date

REVISIONS		
No.	Description	Date
AS	BUILT	

Drawn/Prepared By: **Makeever & Associates, Inc.**
 248 KENNEDY ROAD, SUITE 200
 CRAWFORD COUNTY, OHIO 43025
 Phone: 614.882.4177 Fax: 614.882.4177

OVERALL LAYOUT
LEAD MAPPING IN DISTRIBUTION SYSTEM
 PWS ID: OH1700703

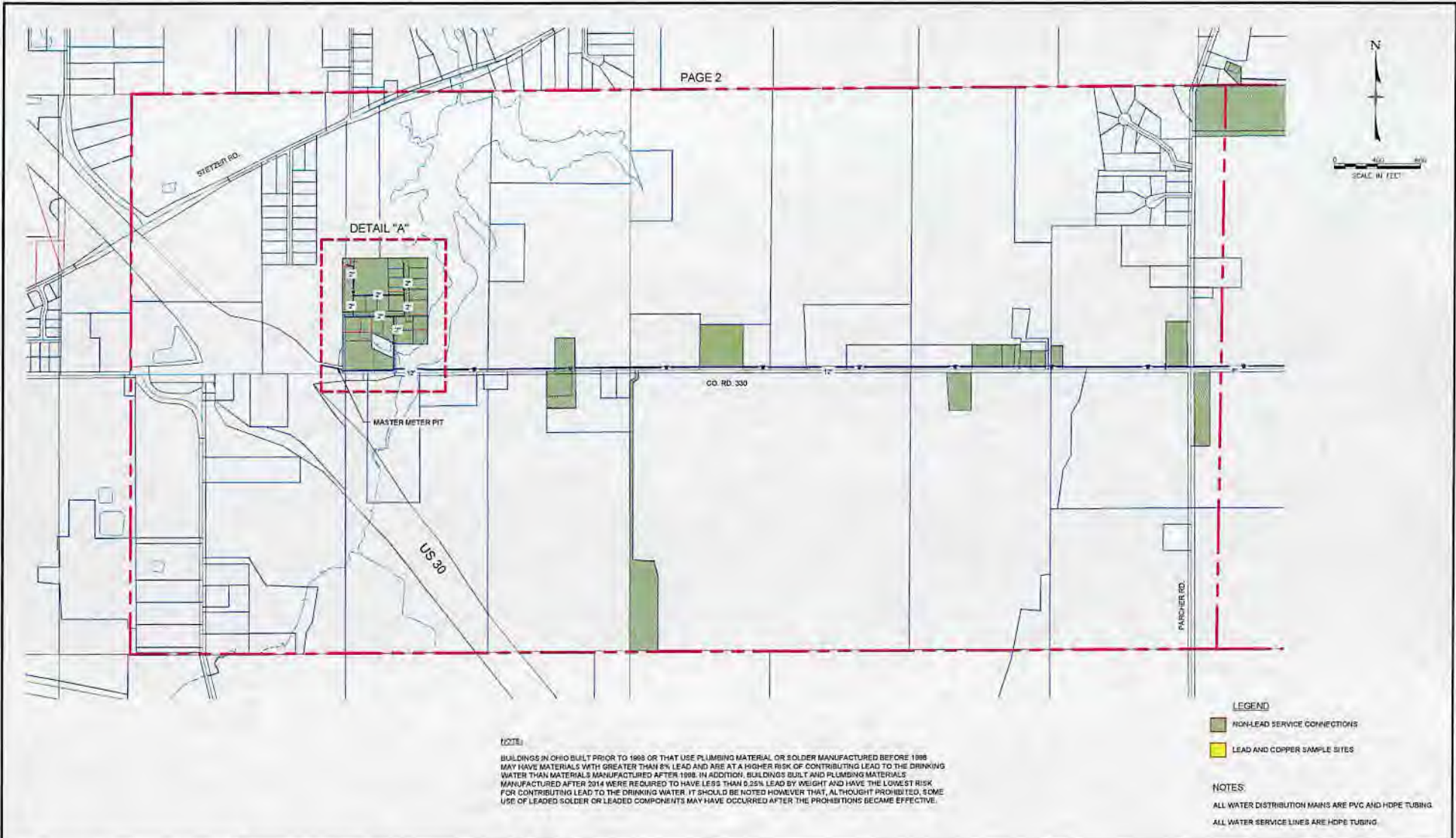
ENG. FILE NO.:	
WP. ACCT. NO.:	
CONTRACT NO.:	
COMPLETION DATE:	
CONTRACTOR:	

CRAWFORD COUNTY WATER DISTRIBUTION SYSTEM

Scale: Field = AS NOTED
 Plot = AS NOTED
 Original Sheet Size = 24"x36"
 Date: 2/13/2017

Sheet No.: 1 OF 8
 SA2012/009/004 Lead & Copper Map
 Dwg. No.: 2012-009-004

OH1700703



NOTE:
 BUILDINGS IN OHIO BUILT PRIOR TO 1988 OR THAT USE PLUMBING MATERIAL OR SOLDER MANUFACTURED BEFORE 1988 MAY HAVE MATERIALS WITH GREATER THAN 8% LEAD AND ARE AT A HIGHER RISK OF CONTRIBUTING LEAD TO THE DRINKING WATER THAN MATERIALS MANUFACTURED AFTER 1988. IN ADDITION, BUILDINGS BUILT AND PLUMBING MATERIALS MANUFACTURED AFTER 2014 WERE REQUIRED TO HAVE LESS THAN 0.25% LEAD BY WEIGHT AND HAVE THE LOWEST RISK FOR CONTRIBUTING LEAD TO THE DRINKING WATER. IT SHOULD BE NOTED HOWEVER THAT, ALTHOUGH PROHIBITED, SOME USE OF LEADED SOLDER OR LEADED COMPONENTS MAY HAVE OCCURRED AFTER THE PROHIBITIONS BECAME EFFECTIVE.

LEGEND

- NON-LEAD SERVICE CONNECTIONS
- LEAD AND COPPER SAMPLE SITES

NOTES:
 ALL WATER DISTRIBUTION MAINS ARE PVC AND HDPE TUBING
 ALL WATER SERVICE LINES ARE HDPE TUBING

EASEMENT REFERENCE			
City's No.	County Recorder	Volume	Page

REVISIONS			
No.	Description	Approval	Date

Drawn/Checked By:

Makeever & Associates, Inc.
 ENGINEERS & ARCHITECTS
 10000 W. STATE ST. SUITE 200
 CLEVELAND, OHIO 44120
 (216) 487-9900 FAX (216) 487-9901

PAGE 2

ENCL. FILE NO. _____
 MAP ACCT. NO. _____
 DISTRICT NO. _____
 COMPLETE DRAWING _____
 CONTRACTOR _____

**CRAWFORD COUNTY
 WATER DISTRIBUTION SYSTEM**

Scale: 1/8" = 10' NOTED
 Vert. = AS NOTED
 Original Sheet Size = 24" x 36"
 Date = 3/15/2017

Sheet No. 2 OF 5
 S:\2012\10091006 Lead & Copper Map
 Eng. No.: 2012-009-004



PAGE 3

DETAIL "B"



NOTE:
 BUILDINGS IN OHIO BUILT PRIOR TO 1988 OR THAT USE PLUMBING MATERIAL OR SOLDER MANUFACTURED BEFORE 1988 MAY HAVE MATERIALS WITH GREATER THAN 8% LEAD AND ARE AT A HIGHER RISK OF CONTRIBUTING LEAD TO THE DRINKING WATER THAN MATERIALS MANUFACTURED AFTER 1988. IN ADDITION, BUILDINGS BUILT AND PLUMBING MATERIALS MANUFACTURED AFTER 2014 WERE REQUIRED TO HAVE LESS THAN 0.25% LEAD BY WEIGHT AND HAVE THE LOWEST RISK FOR CONTRIBUTING LEAD TO THE DRINKING WATER. IT SHOULD BE NOTED HOWEVER THAT, ALTHOUGH PROHIBITED, SOME USE OF LEADED SOLDER OR LEADED COMPONENTS MAY HAVE OCCURRED AFTER THE PROHIBITIONS BECAME EFFECTIVE.

- LEGEND**
- NON-LEAD SERVICE CONNECTIONS
 - LEAD AND COPPER SAMPLE SITES

NOTES:
 ALL WATER DISTRIBUTION MAINS ARE PVC AND HOPE TUBING.
 ALL WATER SERVICE LINES ARE HOPE TUBING

FASTMENT REFERENCE			
City's No.	Locality	Portion	Quarter

REVISIONS			
No.	Description	Approval	Date



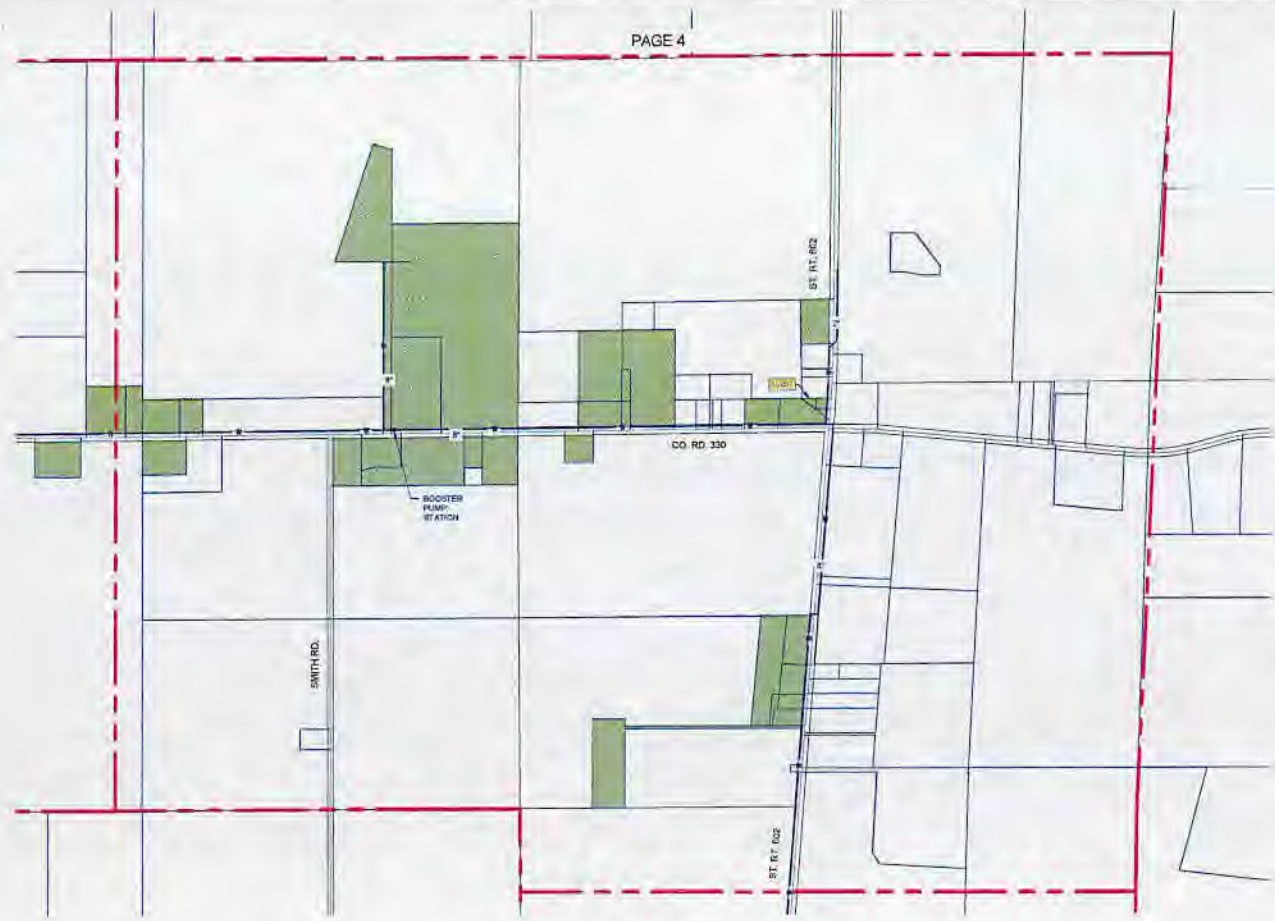
PAGE 3

ENG. FILE NO. _____
 IMP. ACCT. NO. _____
 CONTRACT NO. _____
 COMPLETION DATE _____
 CONTRACTOR _____

**CRAWFORD COUNTY
 WATER DISTRIBUTION SYSTEM**

Scale: Horiz. = AS NOTED
 Vert. = AS NOTED
 Original Sheet Size = 34" x 44"
 Date: 2/15/2017

Sheet No. 3 OF 8
 ©2017 MAKEEVER Lead & Copper Map
 Reg. No. 2012-008-004



NOTE:
 BUILDINGS IN OHIO BUILT PRIOR TO 1996 OR THAT USE PLUMBING MATERIAL OR SOLDER MANUFACTURED BEFORE 1996 MAY HAVE MATERIALS WITH GREATER THAN 8% LEAD AND ARE AT A HIGHER RISK OF CONTRIBUTING LEAD TO THE DRINKING WATER THAN MATERIALS MANUFACTURED AFTER 1996. IN ADDITION, BUILDINGS BUILT AND PLUMBING MATERIALS MANUFACTURED AFTER 2014 WERE REQUIRED TO HAVE LESS THAN 0.25% LEAD BY WEIGHT AND HAVE THE LOWEST RISK FOR CONTRIBUTING LEAD TO THE DRINKING WATER. IT SHOULD BE NOTED HOWEVER THAT, ALTHOUGH PROHIBITED, SOME USE OF LEADED SOLDER OR LEADED COMPONENTS MAY HAVE OCCURRED AFTER THE PROHIBITIONS BECAME EFFECTIVE.

- LEGEND**
- NON-PAN SERVICE CONNECTIONS
 - LEAD AND COPPER SAMPLE SITES

NOTES:
 ALL WATER DISTRIBUTION MAINS ARE PVC AND HDPE TUBING.
 ALL WATER SERVICE LINES ARE HDPE TUBING.

BASEMENT REFERENCE	
DTW's No.	County/Project/Name/ Page

REVISIONS			
No.	Description	Approved	Date

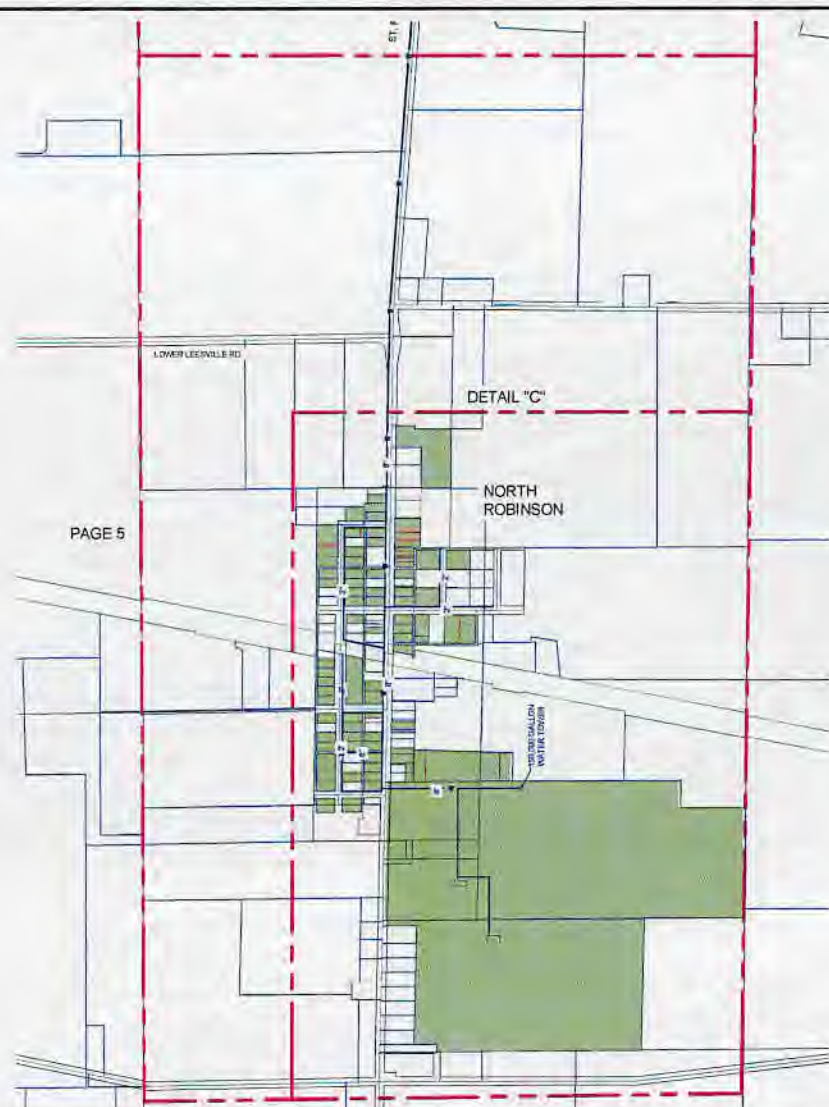
Drawn Prepared By:

 Makeever & Associates, Inc.
 200 JACOBS BLVD. SUITE 200
 COLUMBUS, OHIO 43260
 (614) 221-2211

ENG. FILE NO. _____
 WP. ACCT. NO. _____
 CONTRACT NO. _____
 COMPLETION DATE _____
 CONTRACTOR _____

CRAWFORD COUNTY WATER DISTRIBUTION SYSTEM

Code: 1002 - AS NOTED 1003 - AS NOTED Original Sheet Size = 24" x 36" Date = 2/15/2017	Sheet No. 4 OF 9 C:\2012\CRAWFORD Land & Copper Map Desc. No. : 2012-029-004
---	--



NOTE:
 BUILDINGS IN OHIO BUILT PRIOR TO 1998 OR THAT USE PLUMBING MATERIAL OR SOLDER MANUFACTURED BEFORE 1998 MAY HAVE MATERIALS WITH GREATER THAN 8% LEAD AND ARE AT A HIGHER RISK OF CONTRIBUTING LEAD TO THE DRINKING WATER THAN MATERIALS MANUFACTURED AFTER 1998. IN ADDITION, BUILDINGS BUILT AND PLUMBING MATERIALS MANUFACTURED AFTER 2014 WERE REQUIRED TO HAVE LESS THAN 0.25% LEAD BY WEIGHT AND HAVE THE LOWEST RISK FOR CONTRIBUTING LEAD TO THE DRINKING WATER. IT SHOULD BE NOTED HOWEVER THAT, ALTHOUGH PROHIBITED, SOME USE OF LEADED SOLDER OR LEADED COMPONENTS MAY HAVE OCCURRED AFTER THE PROHIBITIONS BECAME EFFECTIVE.

- LEGEND**
- IN-ALL-PAD SERVICE CONNECTIONS
 - LEAD AND COPPER SAMPLE SITES

NOTES:
 ALL WATER DISTRIBUTION MAINS ARE PVC AND HDPE TUBING
 ALL WATER SERVICE LINES ARE HDPE TUBING

PAGE 5

BASEMENT REFERENCE			
City's No.	County Recorder Volume	Page	Date

REVISIONS			
No.	Description	Approved	Date

Prepared By:

Makeever & Associates, Inc.
 400 HUNTERS LANE, SUITE 100
 HUNTSVILLE, AL 35894
 PHONE: (256) 837-1100 FAX: (256) 837-1101

ENC. FILE NO.	_____
WP. ACCT. NO.	_____
CONTRACT NO.	_____
COMPLETION DATE	_____
CONTRACTOR	_____

**CRAWFORD COUNTY
 WATER DISTRIBUTION SYSTEM**

Scale: Horiz. = AS NOTED
 Vert. = AS NOTED

Original Sheet Size = 34" x 46"
 Date: 2/19/2017

Sheet No.: 5 OF 8
 S:\2015\0001\04 Lead & Copper Map
 Exp. No.: 2012-009-004



NOTE:
 BUILDINGS IN OHIO BUILT PRIOR TO 1998 OR THAT USE PLUMBING MATERIAL OR SOLDER MANUFACTURED BEFORE 1986 MAY HAVE MATERIALS WITH GREATER THAN 8% LEAD AND ARE AT A HIGHER RISK OF CONTRIBUTING LEAD TO THE DRINKING WATER THAN MATERIALS MANUFACTURED AFTER 1986. IN ADDITION, BUILDINGS BUILT AND PLUMBING MATERIALS MANUFACTURED AFTER 2014 WERE REQUIRED TO HAVE LESS THAN 0.25% LEAD BY WEIGHT AND HAVE THE LOWEST RISK FOR CONTRIBUTING LEAD TO THE DRINKING WATER. IT SHOULD BE NOTED HOWEVER THAT, ALTHOUGH PROHIBITED, SOME USE OF LEADED SOLDER OR LEADED COMPONENTS MAY HAVE OCCURRED AFTER THE PROHIBITIONS BECAME EFFECTIVE.

- LEGEND**
- NON-LEAD SERVICE CONNECTIONS
 - LEAD AND COPPER SAMPLE SITES

NOTES:
 ALL WATER DISTRIBUTION MAINS ARE PVC AND HDPE TUBING.
 ALL WATER SERVICE LINES ARE HDPE TUBING.

EASEMENT REFERENCE				REVISIONS			
City's No.	County Record		Grantor	No.	Description	Approval	Date
	Volume	Page					
				AS BUILT			



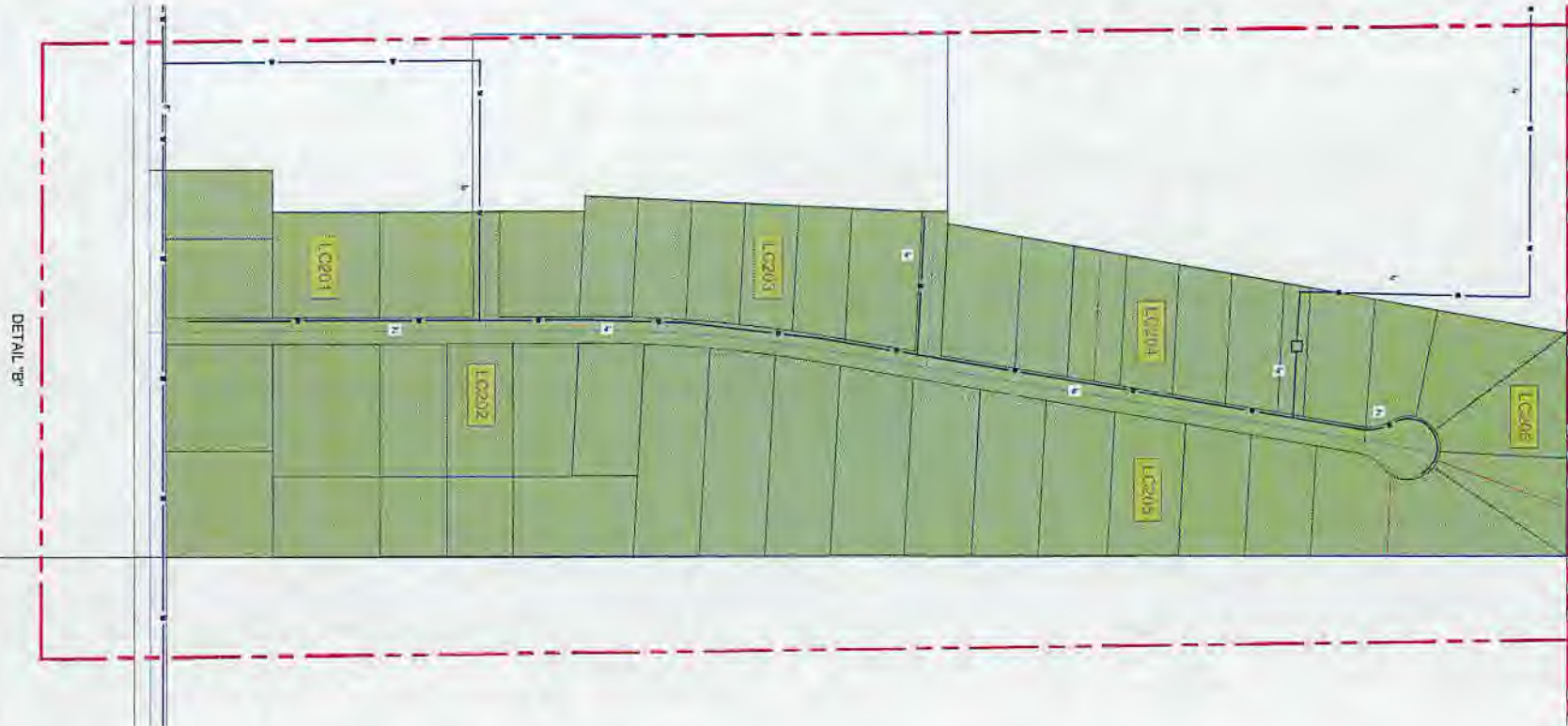
DETAIL A

ENG. FILE NO. _____
 IMP. ACCT. NO. _____
 CONTRACT NO. _____
 COMPLETION DATE _____
 CONTRACTOR _____

**CRAWFORD COUNTY
 WATER DISTRIBUTION SYSTEM**

Scale: 1/4" = 1'-0" AS NOTED
 Year: AS NOTED
 Original Sheet Size = 24" x 36"
 Date: 2/15/2017

Sheet No.: 11 OF 8
 SA2017 (11/15/17) Use Lead & Copper Map
 Des. No.: 2012-09-004



NOTE:
 BUILDINGS IN OHIO BUILT PRIOR TO 1988 OR THAT USE PLUMBING MATERIAL OR SOLDER MANUFACTURED BEFORE 1988 MAY HAVE MATERIALS WITH GREATER THAN 8% LEAD AND ARE AT A HIGHER RISK OF CONTRIBUTING LEAD TO THE DRINKING WATER THAN MATERIALS MANUFACTURED AFTER 1988. IN ADDITION, BUILDINGS BUILT AND PLUMBING MATERIALS MANUFACTURED AFTER 2014 WERE REQUIRED TO HAVE LESS THAN 0.25% LEAD BY WEIGHT AND HAVE THE LOWEST RISK FOR CONTRIBUTING LEAD TO THE DRINKING WATER. IT SHOULD BE NOTED HOWEVER THAT, ALTHOUGH PROHIBITED, SOME USE OF LEADED SOLDER OR LEADED COMPONENTS MAY HAVE OCCURRED AFTER THE PROHIBITIONS BECAME EFFECTIVE.

- LEGEND**
- NON-LEAD SERVICE CONNECTIONS
 - LEAD AND COPPER SAMPLE SITES

NOTES:
 ALL WATER DISTRIBUTION MAINS ARE PVC AND HDPE TUBING.
 ALL WATER SERVICE LINES ARE HDPE TUBING.

EASEMENT REFERENCE			
City's No.	County	Traverse	Corner

REVISIONS			
No.	Description	Appr'd	Date
	AS BUILT		

Plan Prepared by

Makeever & Associates, Inc.
 ALL BUILDING AND MECHANICAL WORK SHALL BE DONE IN ACCORDANCE WITH THE OHIO BUILDING CODE AND ALL APPLICABLE REGULATIONS.

DETAIL B

ENG. FILE NO. _____
 IMP. ACTY. NO. _____
 CONTRACT NO. _____
 COMPLETION DATE _____
 CONTRACTOR _____

**CRAWFORD COUNTY
 WATER DISTRIBUTION SYSTEM**

Scale = 1/4" = 1'-0" NOTED
 Vel. = AS NOTED
 Original Sheet Size = 24" x 36"
 Date = 2/15/2017

Sheet No. = 7 OF 8
 SA2012LESP/0404 Lead & Copper Map
 Dwg. No. = 2012-005-004



NOTE:

BUILDINGS IN OHIO BUILT PRIOR TO 1998 OR THAT USE PLUMBING MATERIAL OR SOLDER MANUFACTURED BEFORE 1998 MAY HAVE MATERIALS WITH GREATER THAN 8% LEAD AND ARE AT A HIGHER RISK OF CONTRIBUTING LEAD TO THE DRINKING WATER THAN MATERIALS MANUFACTURED AFTER 1998. IN ADDITION, BUILDINGS BUILT AND PLUMBING MATERIALS MANUFACTURED AFTER 2014 WERE REQUIRED TO HAVE LESS THAN 0.25% LEAD BY WEIGHT AND HAVE THE LOWEST RISK FOR CONTRIBUTING LEAD TO THE DRINKING WATER. IT SHOULD BE NOTED HOWEVER THAT, ALTHOUGH PROHIBITED, SOME USE OF LEADED SOLDER OR LEADED COMPONENTS MAY HAVE OCCURRED AFTER THE PROHIBITIONS BECAME EFFECTIVE.

NOTES:

ALL WATER DISTRIBUTION MAINS ARE PVC AND HDPE TUBING.
ALL WATER SERVICE LINES ARE HDPE TUBING.

LEGEND

- NON-LEAD SERVICE CONNECTIONS
- LEAD AND COPPER SAMPLE SITES

EASEMENT REFERENCE		REVISIONS	
City's No.	County Recorder Volume Page	No.	Description

No.	Description	Approved	Date

Drawn Prepared by:

Makeover & Associates, Inc.
 2115 W. 10th St. - Columbus, OH 43228
 Phone: 614.291.1111 Fax: 614.291.1112

DETAIL C

ENG. TITLE NO.:	
IMP. ACCT. NO.:	
CONTRACT NO.:	
COMPLETION DATE:	
CONTRACTOR:	

**CRAWFORD COUNTY
WATER DISTRIBUTION SYSTEM**

Scale: 1" = 100' - AS NOTED
 Date: 2/17/2017

Sheet No. - 8 OF 8
 15/2012/CRWFLDPA Lead & Copper Map
 DWG. NO.: 2012-009-004