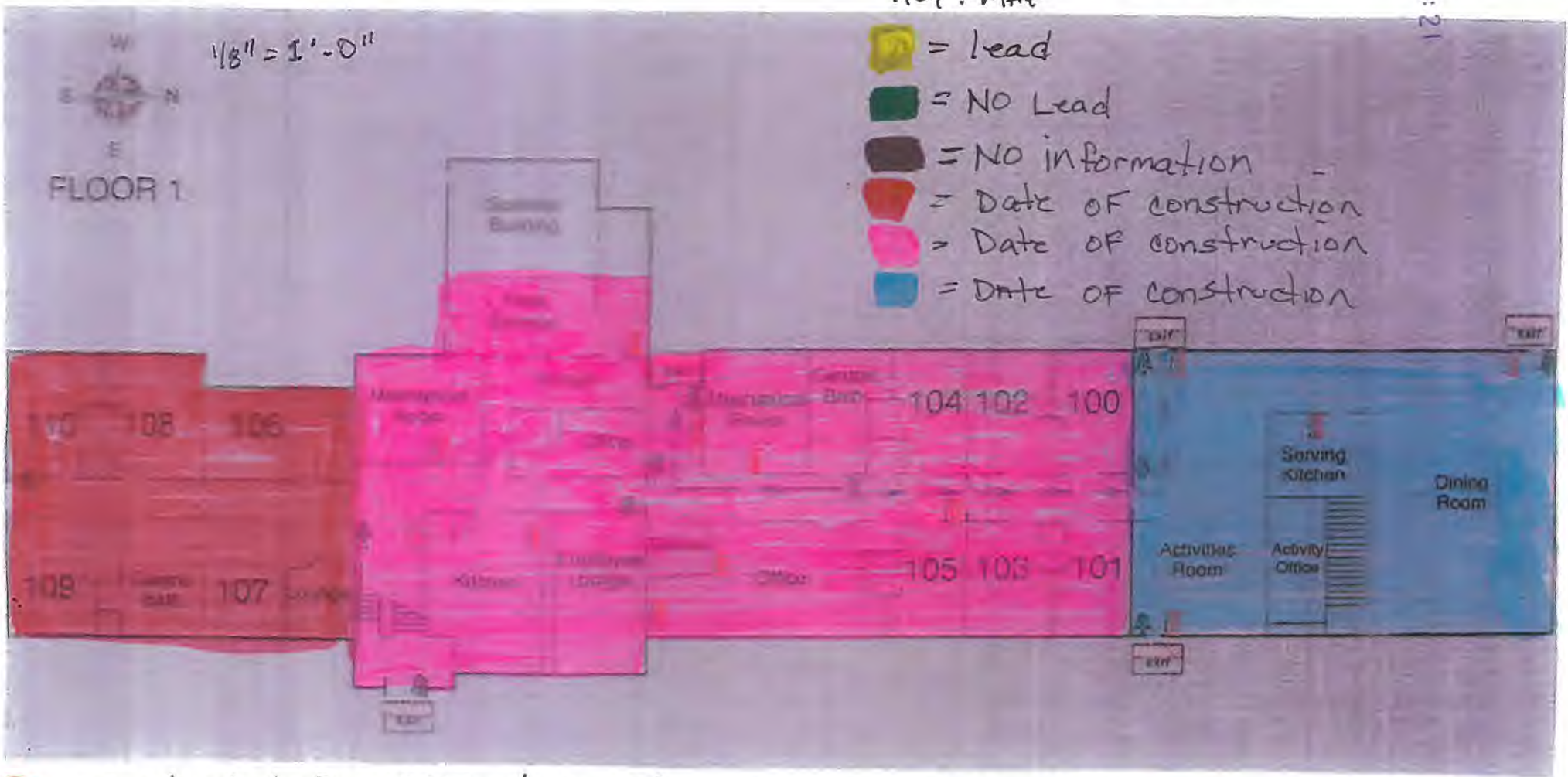


2017 FEB 27 PM 3:21

Aradia Acres
20017 ST RT 93 S
Logan Ohio 43138
740-385-2461

buildings in Ohio built prior to 1998 or that use plumbing material or solder manufactured before 1998 may have materials with greater than 8% lead and are at a higher risk of contributing lead to the drinking water than materials manufactured after 1998. In addition, buildings built and plumbing materials manufactured after 2014 were required to have less than 0.25% lead by weight and have the lowest risk for contributing lead to the drinking water.

- Key: MAP
- = Lead
 - = NO Lead
 - = NO information
 - = Date of construction
 - = Date of construction
 - = Date of construction



- = Constructed in 1995 / All Fixtures updated in 2000
- = NO Lead
- = Constructed in 1922 closed in 1964 renovated and opened as a nursing home in 1967
- = NO information All fixtures updated in 2012
- = constructed in 2003
- = NOT lead All Fixtures updated in 2013

Buildings in Ohio built prior to 1998 or that use plumbing material or solder manufactured before 1998 may have materials with greater than 8% lead and are at a higher risk of contributing lead to the drinking water than materials manufactured after 1998. In addition, buildings built and plumbing materials manufactured after 2014 were required to have less than 0.25% lead by weight and have the lowest risk for contributing lead to the drinking water.

Arcadia Acres
 20012 ST RT 935
 Logan Ohio 43138
 740-~~385~~ 385-2461

7/17 FEB 27 PM 9:21

Key: MAP

- = lead
- = NO lead
- = NO information
- = Date of construction
- = Date of construction
- = Date of construction



1/8" = 1'-0"

FLOOR 2



= constructed in 1995 / All Fixtures updated in 200

= NO Lead

= constructed in 1922 closed in 1964 renovated and reopened as a Nursing Home in 1967
 = NO information All Fixtures updated in 2012

= Constructed in 2003

= Non lead All Fixtures updated in 2013

ARCADIA ACRES
20017 ST RT 935
LOGAN Ohio 43138
~~740 503~~ 740 385-2461



Basement

1/8" = 1' - 0"

Key; MAP

= Lead

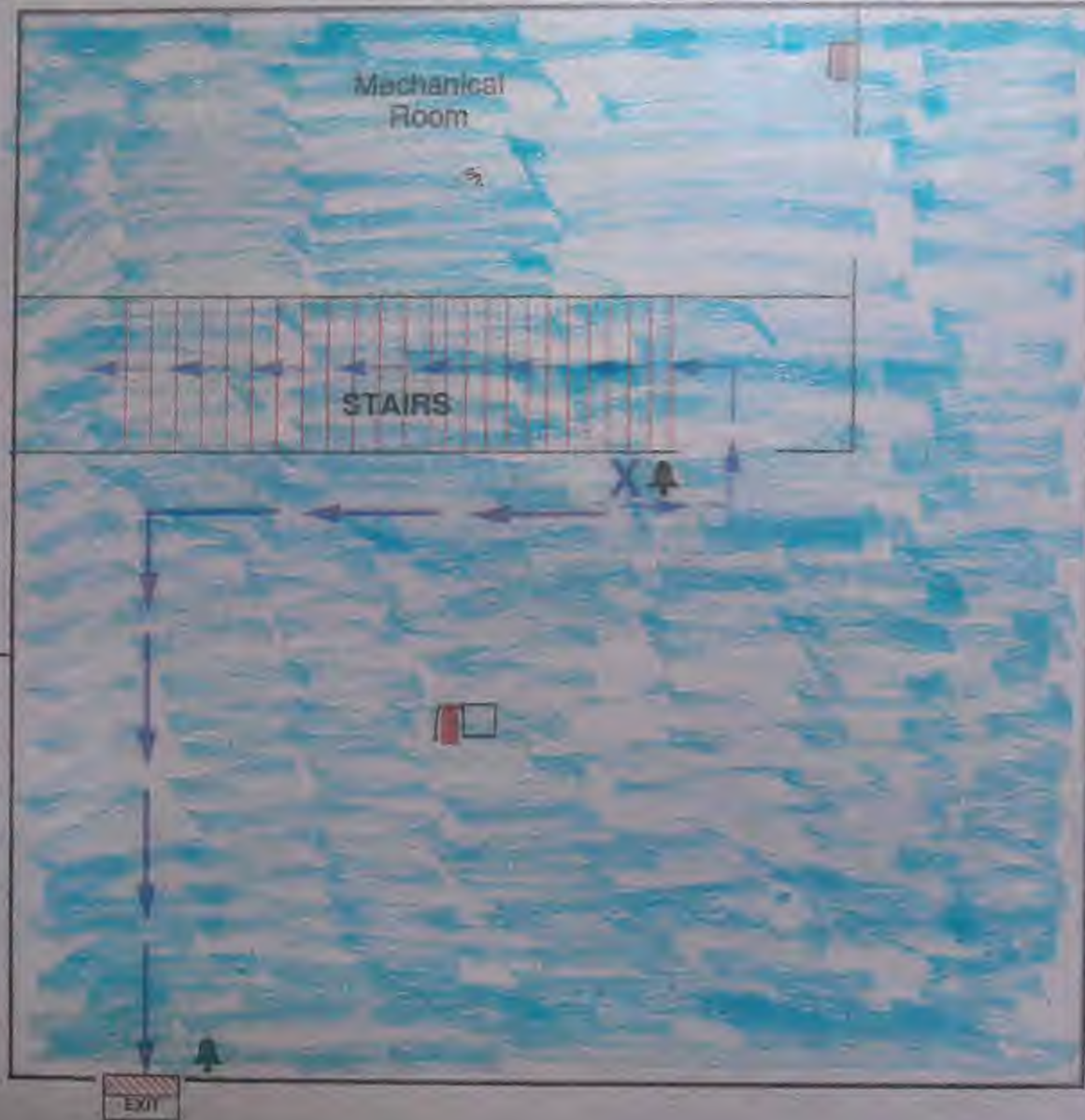
= NON lead

= NO information

= DATE of construction

= constructed in 2003

= NON lead



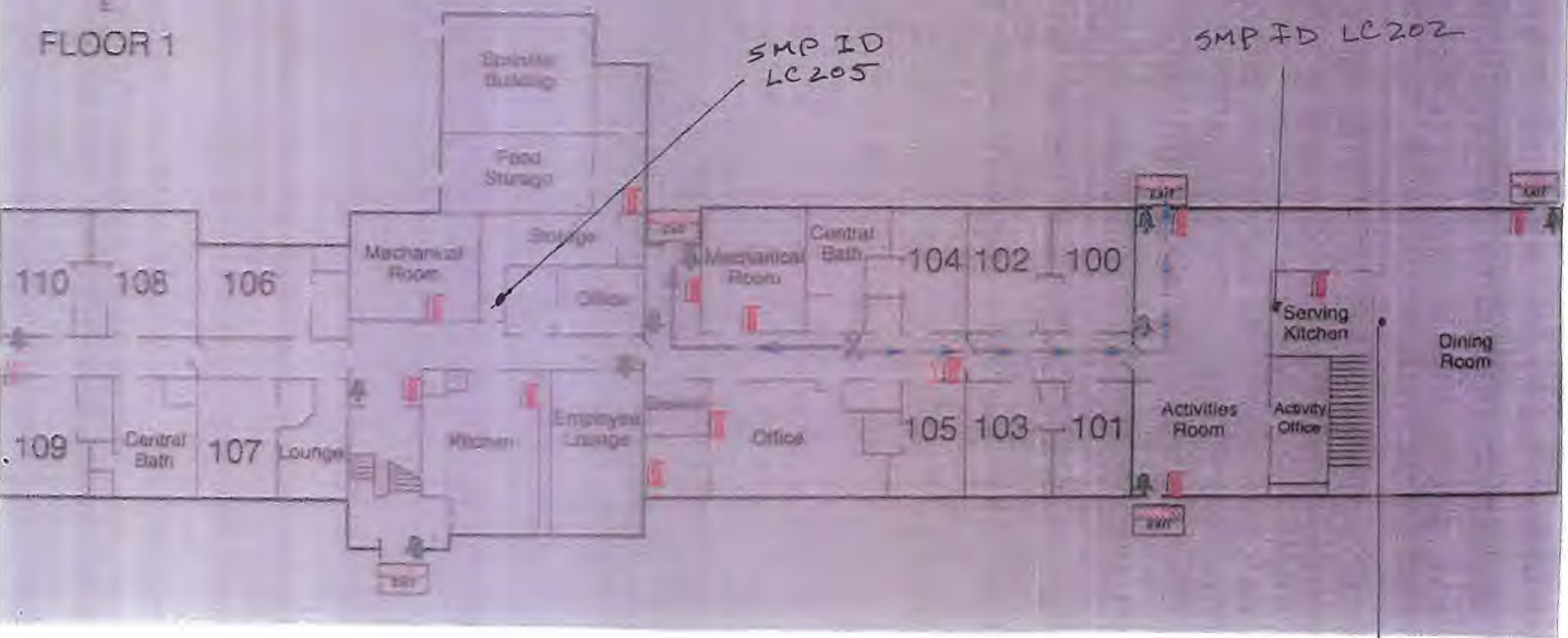
7/17 FEB 27 PM 3:21

*buildings in Ohio built prior to 1998 or that use plumbing material or solder manufactured before 1998 may have materials with greater than 8% lead and are at a higher risk of contributing lead to the drinking water than materials manufactured after 1998. In addition, buildings built and plumbing materials manufactured after 2014 were required to have less than 0.25% lead by weight and have the lowest risk for contributing lead to the drinking water.

Arcadia Acres Nursing Home
20017 ST. RT 935
Loban Ohio 43138
140-085-2461

7:17 FEB 27 PM 3:21

1/8" = 1'-0"



SMP ID LC205

SMP ID LC202

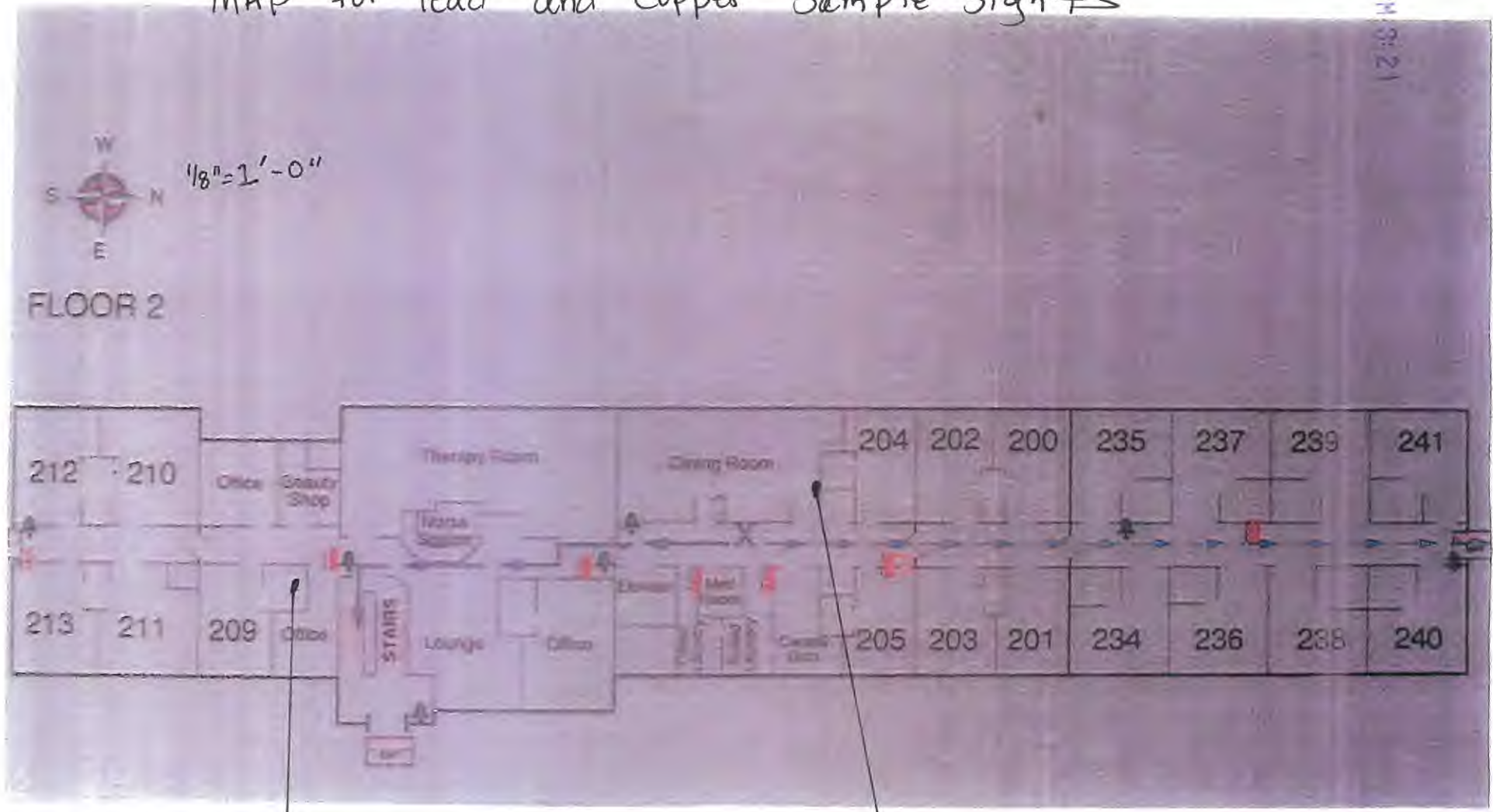
SMP ID LC203

buildings in Ohio built prior to 1998 or that use plumbing material or solder manufactured before 1998 may have materials with greater than 8% lead and are at a higher risk of contributing lead to the drinking water than materials manufactured after 1998. In addition, buildings built and plumbing materials manufactured after 2014 were required to have less than 0.25% lead by weight and have the lowest risk for contributing lead to the drinking water.

ARCADIA ACRES NURSING HOME
26017 ST RT 935
LOGAN, OHIO 43138
740-385-2461

2017 FEB 27 PM 3:21

MAP for lead and Copper Sample Sights



SMP ID LC201

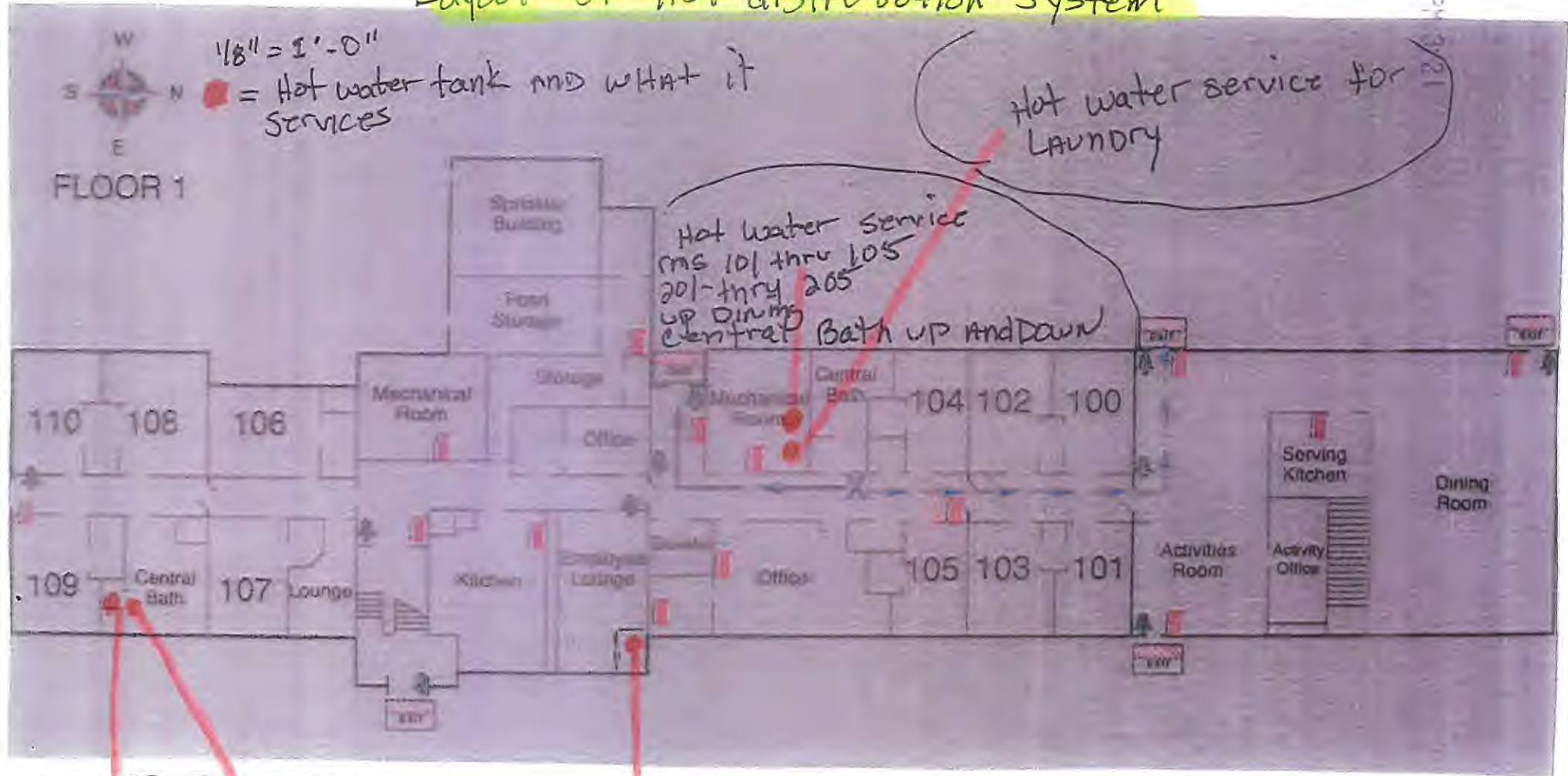
SMP ID LC204

Buildings in Ohio built prior to 1998 or that use plumbing material or solder manufactured before 1998 may have materials with greater than 8% lead and are at a higher risk of contributing lead to the drinking water than materials manufactured after 1998. In addition, buildings built and plumbing materials manufactured after 2014 were required to have less than 0.25% lead by weight and have the lowest risk for contributing lead to the drinking water.

ANCADIA HORES
20017 STRT 935
LOGAN OHIO 43138
740-385-2461

7017 FEB 27 PM 3:21

Layout OF Hot distribution system



Tankless H.W., whirlpool

Hot water service employee lounge
Kitchen

Hot water service rooms 106 thru 109
Shower room

Hot water service 209 thru 213

LAY OUT Hot water Services
Dining room AND ROOMS 235 thru 240

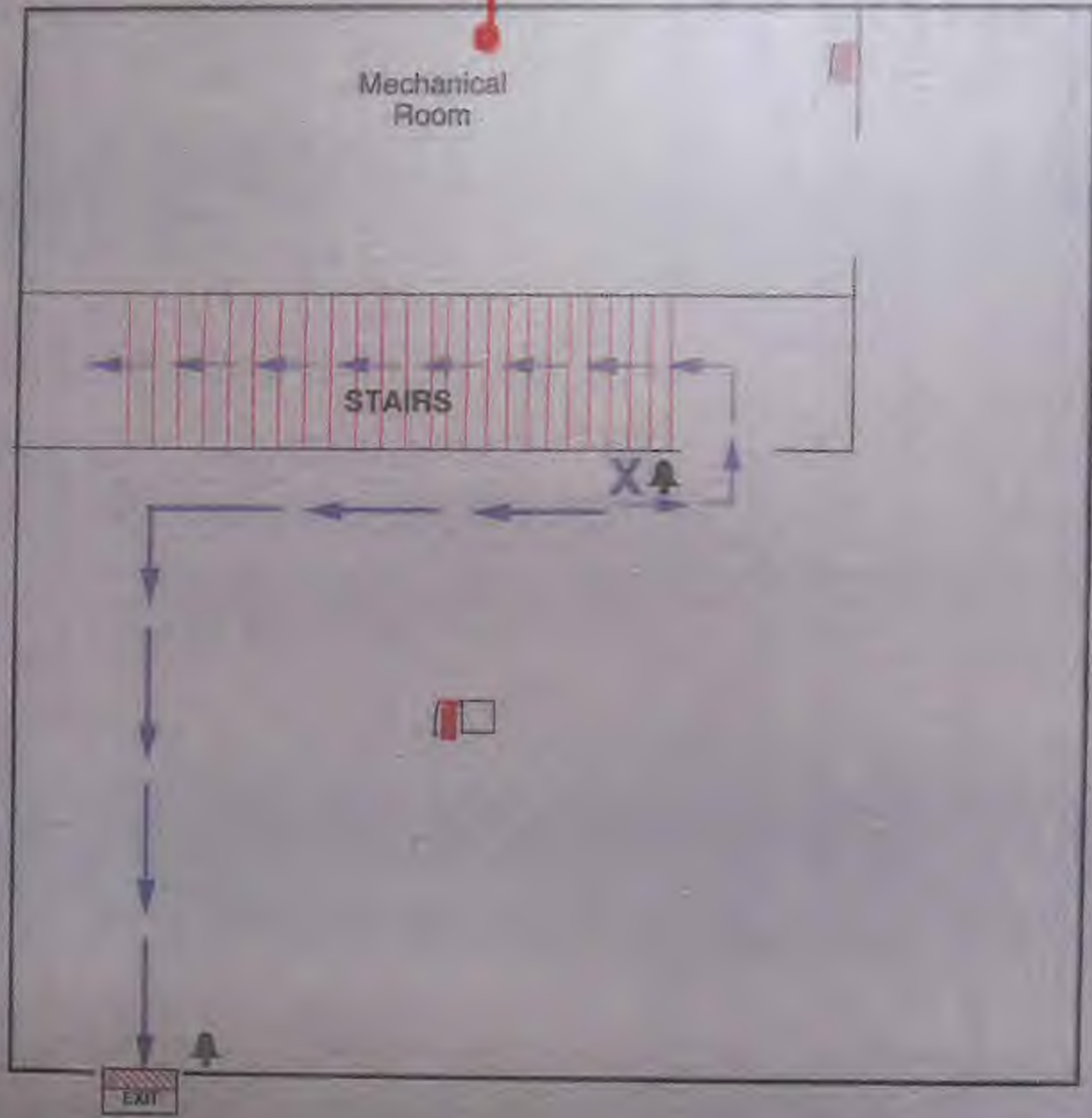
FEB 27 PM 3:21

● = Hot water Tank
AND what it services



Basement
1/8" = 1' - 0"

ARCADIA Acres
20017 ST RT 935
LOGAN OHIO 43138
740-385-2461

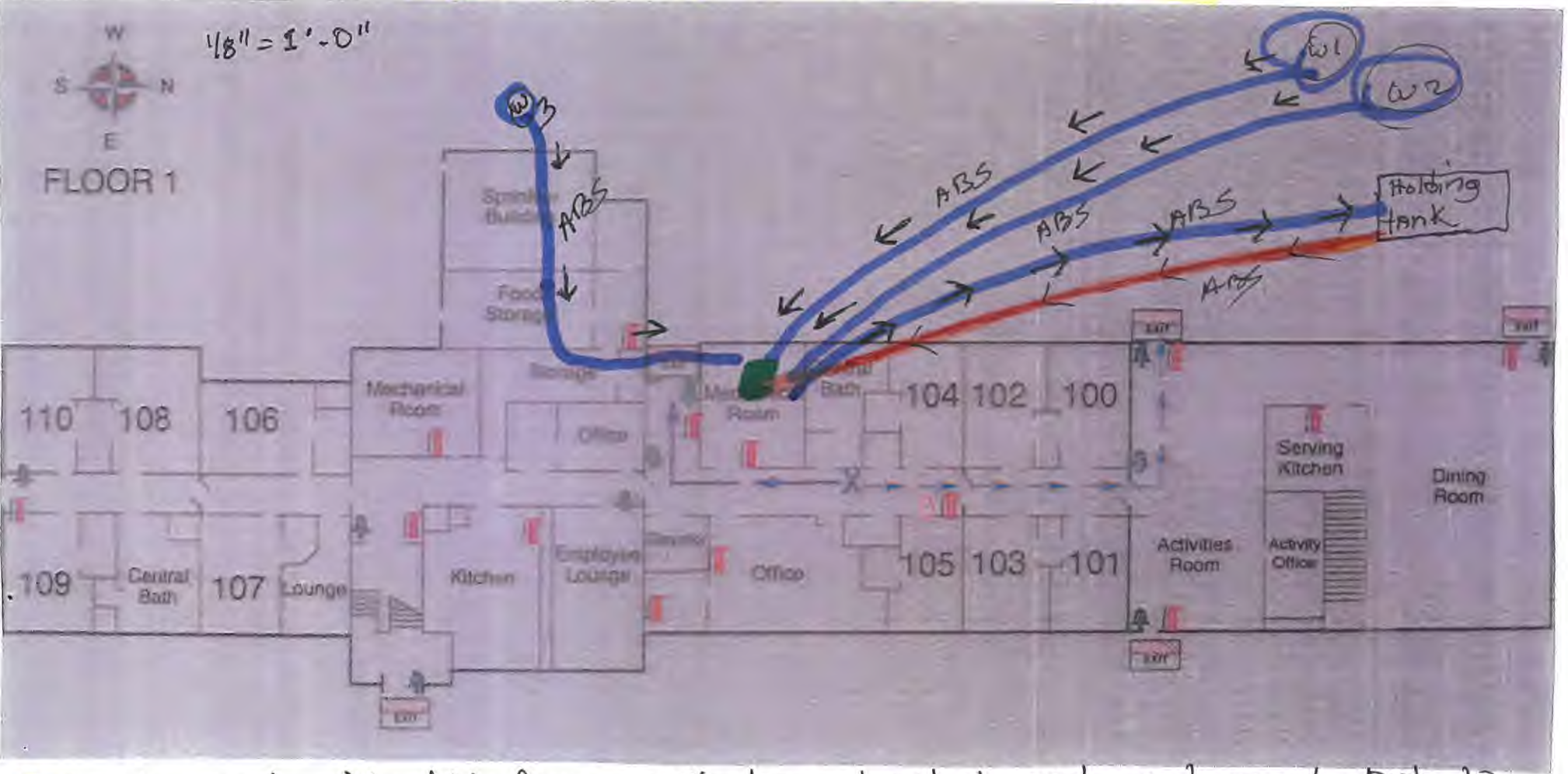


Buildings in Ohio built prior to 1998 or that use plumbing material or solder manufactured before 1998 may have materials with greater than 8% lead and are at a higher risk of contributing lead to the drinking water than materials manufactured after 1998. In addition, buildings built and plumbing materials manufactured after 2014 were required to have less than 0.25% lead by weight and have the lowest risk for contributing lead to the drinking water.

ARCADIA ACRES
20017 STRT 93 S
LOCAN OHIO 43138
740-385-2461

8/1
10:27 PM 8/21

Layout of Cold Water distribution System



- = water coming into bld from well, then treated and returned out to holding tank
- = water from holding tank after treatment returned to the bld
- AS potable water
- = service line = Non Lead