



Environmental Compliance
Health, Environmental, Safety & Security
Terminal, Transport & Rail

Marathon Petroleum Company LP

539 South Main Street
Findlay, OH 45840

March 3, 2017

Ohio EPA – NEDO
Attn: Mr. Bob Henn
2110 East Aurora Road
Twinsburg, Ohio 44087

RE: Lead Service Line and Fixture Mapping Project
Marathon Canton Truck Facility
PWS ID: OH 7677624

Dear Mr. Henn:

In compliance with Ohio House Bill (HB) 512, please accept this Mapping Project Package for the Marathon Canton Truck Facility (PWS ID OH7677624).

The Marathon Petroleum Company – Canton Truck Facility located at 4211 23rd Street, Canton, Ohio 44708, was constructed in 2015 with no lead solder, pipes, or service lines. The attached drawings include the well installation and building details.

- Drawing P-001, Plumbing Site Plan, shows the entire parcel with the area of the well highlighted, including where the service line enters the building.
- Drawing P-701, Plumbing Schedules and Risers, outline the distribution plan for the building.
- Drawing P-201, Plumbing Floor Plan, is the entire building plan that includes a certification from the plumbing contractor of materials that were used in the actual build-out in 2015.
- The Well Development Sheet provides material details from the well installation.
- Finally, a copy of the previously submitted Lead and Copper SMP IDS is attached for reference in this package.



Environmental Compliance
Health, Environmental, Safety & Security
Terminal, Transport & Rail

Marathon Petroleum Company LP

539 South Main Street
Findlay, OH 45840

Please let me know if you have any questions or concerns regarding this site or this submittal.

Sincerely,

A handwritten signature in blue ink that reads "Sue Barto" followed by a stylized surname.

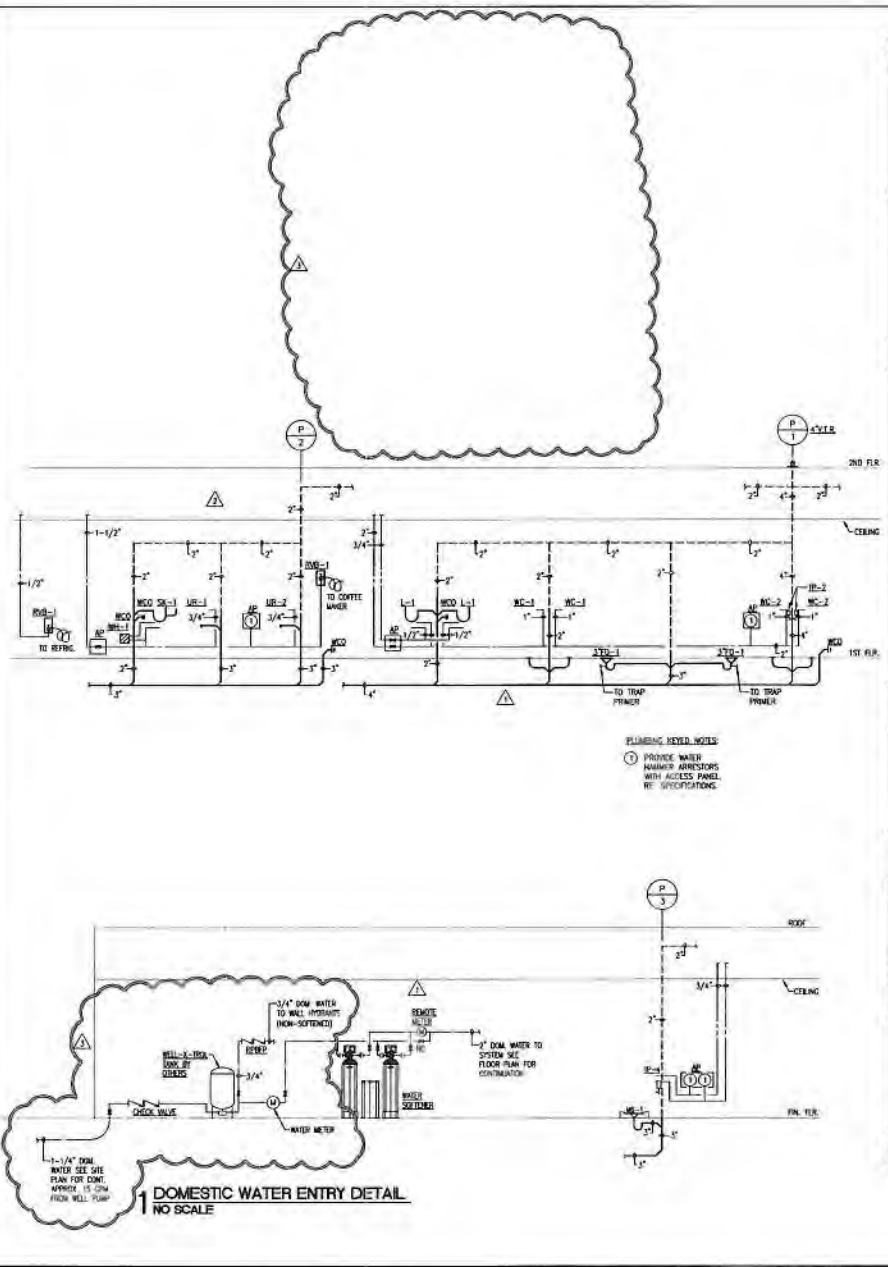
Sue Barto
Environmental Professional
(614) 285-8021/Columbus, Ohio

Enclosures

Cc:

-Ohio Department of Health
Attn: Lead Program, 6th Floor
246 North High Street
Columbus, Ohio 43215
BEH@odh.ohio.gov

-Ohio Department Job and Family Services (ODJFS)
Attn: Office of Family Assistance – Bureau of Child Care Licensing and Monitoring
P.O. Box 183204
Columbus, Ohio 43218-3204
Angela.kaiser@jfs.ohio.gov



DESIG	FIXTURE TYPE	CW	HW	1/4" F	WASTE	VENT	DESCRIPTION
WC-1	WATER CLOSET	1"	-	-	4"	2"	WATER CLOSET: ASME A21.21A FLOOR MOUNT 8"X10" SET, 15" BOWL HEIGHT, WHITE VITREOUS CHINA CLOSET BOWL, WITH ELONGATED PIN 1-1/2"X12"X1" TOP SPUD, 3/4" DIA CAP, 1/2" OFF, AMERICAN STANDARD 2254/02L OR KOHLER EQUIVALENT. WITH PLASTIC OPEN FRONT, EXTENDED BACK, SELF-SUPPORTING HINGE, STAINLESS STEEL INCLUDING HANGWARE, FINISH 105.175, WITH COVER, AMERICAN STANDARD MODEL, REMISE, CHROME, CHLORITE, BEARS. MANUAL EXPOSED FLUSH VALVE ASME A21.21B EXPOSED CHROME PLATE CAP/FRAM TYPE WITH NON-HOLD OPEN HANDLE, ESCUTCHION, SEAT SHAMPOO, INTEGRAL SCREWS/STOP AND VACUUM BREAKER MAXIMUM 1/2" OFF, BLOW-OFF TYPE, OR ZURN AIR SERIES. WALL MOUNTED CARRIER ASME A21.21B ADJUSTABLE CAST IRON FRAME, INTEGRAL CHAIN HUB AND VENT, ADJUSTABLE SPUD LEGS FOR FLOOR AND WALL ATTACHMENT, THREADED FIXTURE STUD FOR WITH NUTS AND WASHERS, JAY R. SMITH 200 SERIES CARRIERS OR EQUAL, BY ZURN AND WATTS.
WC-2	ADA/TAB DESIGNATED WATER CLOSET	1"	-	-	4"	2"	ASME AS WC-1 EXCEPT WITH AMERICAN STANDARD WATER CLOSET MODEL NO. 504.00L, 18" FRI HEIGHT.
UR-1	URINAL	3/4"	-	-	2"	2"	URINAL: ASME A21.21A VITREOUS CHINA, WALL HANG, ELONGATED PIN INTEGRAL TRAP, REMOVABLE STAINLESS STEEL STRAINER, 1/2" TOP SPUD, 1/2" OFF, ADA/TAB COMPLIANT, PROVIDE CHAIR CARRIER AS REQUIRED, KOHLER MODEL, K-1000-ET, OR EQUAL, BY ZURN AND AMERICAN STANDARD. MANUAL EXPOSED FLUSH VALVE ASME A21.21B EXPOSED CHROME PLATED CAP/FRAM TYPE WITH NON-HOLD OPEN HANDLE, ESCUTCHION, INTEGRAL SCREWS/STOP WITH HANGAR, RESISTANT STOP CAP, VACUUM BREAKER MAXIMUM 1/2" GALLON FLUSH VOLUME, BLOW MODEL, ROYAL. WALL MOUNTED CARRIER ASME A21.21B CAST IRON AND STEEL FRAME WITH RECTANGULAR LEGS, LEGS FOR FLOOR AND WALL ATTACHMENT, THREADED FIXTURE STUD FOR FIXTURE HANGER, BEARING STUD, PROVIDE BOTTOM BEARING PLATE, JAY R. SMITH FIXTURE 0657 OR EQUAL, BY ZURN AND WATTS.
UR-2	ADA/TAB DESIGNATED URINAL	3/4"	-	-	2"	2"	ASME AS UR-1 EXCEPT MOUNTED AT ADA/TAB HEIGHT FOR APPROPRIATE AGE GROUP.
L-1	LAVATORY	1/2"	-	-	2"	2"	LAVATORY: VITREOUS CHINA WALL HANG BAIN, ASME A21.21A, 2000 1/2" MINIMUM WITH FOUR (4) 1/4" DIA. BACK, RECTANGULAR WITH FLUSH LP, FROM OVERFLOW, AND SOAP DISPENSER, ADA ACCESSIBLE, AMERICAN STANDARD MODEL, COOLIDGE, KOHLER MODEL, K-1002A, TEMPERED AND COLD WATER PROVIDE FLOOR MOUNTED CARRIER FOR CORRECT LAVATORY TYPE. SUPPLY FILTERED ASME A21.21B CHROME PLATED BRASS SPOUT WITH OPEN END STRAINER, WATER ECONOMY SPINATOR WITH VACUUM BREAKER, 1/2" GPM FLOW, ADA COMPLIANT, FOUR (4) 1/4" DIA. WHITE BLACK HANDLES, CHICAGO FAUCET CO. MODEL, 800-VE3005-6654/CP SERIES. FLOOR MOUNTED CARRIER ASME A21.21B CAST IRON AND STEEL FRAME WITH TUBULAR LEGS, LEGS FOR FLOOR AND WALL ATTACHMENT, THREADED STUD FOR FIXTURE HANGER, CONICAL AREA SUPPORT, BEARING PLATE AND STUD, JAY R. SMITH 770 SERIES. ACCESSIBLE CHROME PLATED 1/2" GALLON BRASS P-TAP WITH CLEAN-OUT PLUG AND AIR WITH ESCUTCHION, REMOVABLE STOP, FLESSIBLE SUPPLIER, TRAP AND WASTE INSULATED AND OFFSET TO MEET ADA COMPLIANCE. TANABATA FIXTURE COMPLIANT FIXTURE.
BK-1	DOUBLE COMPARTMENT SINK, SELF-DRAINING SINK	1/2"	-	3/4"	2"	2"	800-184 DOUBLE COMPARTMENT, SINK-PURPOSE BNC, COUNTER MOUNTED, SELF-DRAINING, 18" GAUGE, TYPE 304 STAINLESS STEEL, 27 X 27 X 1/2" DEEP, DOUBLE COMPARTMENT WITH FAUCET, COOK, THREE HOLES ON F CENTERS, ELKAY LPA0-332, DBC CARTRIDGE, IF CHROME PLATED BRASS BRINE SPOUT WITH ADJUSTABLE, CHICAGO 800-30-37-LP-CF7K, COORDINATE WITH MILLIKOR, 800P DRAWINGS TO VERIFY B.S. MILL, FIT FIXTURE.
BK-2	ELECTRIC WATER COOLER RATED FOR MOON AND OUTDOOR SERVICE WITH POLYOLEFIN VALVE	1/2"	-	-	2"	2"	AIR AND HANGAR MOUNTED ELECTRIC WATER COOLER WITH STAINLESS STEEL TOP, STAINLESS STEEL BODY, ELEVATED ANTI-SOAKT SENSIBLER WITH STREAM GUARD, AUTOMATIC STREAM PUMP/BUTTON, MOUNTING BRACKET, REPRESENTED WITH INTEGRAL AIR COOLED CONDENSER, MECHANICAL ACTUATOR, ELKAY MODEL, VENTILATING, FROST PROOF MODEL, CAPACITY 7.5 GPM OF WATER WITH INLET AT 90 DEGREES F AND ROOM TEMPERATURE OF 90 DEGREES F AIR/HEAT. ELECTRICAL: MAXIMUM 1/2" HP COMPRESSOR, CORD AND PLUG FOR CONNECTION TO ELECTRIC WIRING SYSTEM INCLUDING OPERATING CONNECTOR. PROVIDE CAME TOUCH SPIN. LEAD FREE.
RB-1	RECESSED VALVE BOX	1/2"	-	-	-	-	REFRIGERATION MACHINE STAINLESS STEEL, PREFORMED 100-H-H BOX WITH BRASS VALVES WITH WHEEL HANDLE, RLP IN FRAMES/BOX COVER, GUY GRAY MODEL, 58M75.
UR-1	MOP SINK	1/2"	3/4"	-	2"	2"	100L-28 X 18 X 12 INCH HIGH WHITE MOLDED STONE, FLOOR MOUNTED, WITH 1-1/4" BOWL (WHEEL) STAINLESS STEEL, SHAMPOO GUARD, STAINLESS STEEL, COOL STRAINER, STERN WILLIAMS MODEL, CW-2202. TRAP ASME A21.21B EXPOSED WALL TYPE SUPPLY WITH CROSS HANDLER, SPOUT WALL, DRAGE, VACUUM BREAKER HOSE END SPOUT, STRAINERS, ECCENTRIC, ADJUSTABLE INLETS, INTEGRAL SCREWS/STOP WITH COVERING CAPS AND ADJUSTABLE THREADED WALL PLANKERS, STERN WILLIAMS MODEL, T-1-10. ACCESSORIES: THREE (3) FEET OF 3/8" DIA. DIAMETER PLAN END REINFORCED SYNTHETIC HOSE WITH STAINLESS STEEL WALL BRACKET, STERN WILLIAMS MODEL, T-35. MOP HANGER, STERN WILLIAMS MODEL, T-40.
TRM-1	THERMOSTATIC MIXING VALVE	-	-	-	-	-	MANUFACTURER'S LABEL, POWERS, BRANSON, ACON CONTROL OR APPROVED EQUAL, CERTIFIED TO ASSE STANDARD 107 AND MEETS THE ANTI-SCALD REQUIREMENTS OF ASSE STANDARD 107S. VALVE CHROME PLATED CAST BRASS BODY, STAINLESS STEEL, OR COPPER ALLOY BELOW, INTEGRAL, TEMPERATURE ADJUSTMENT, CAPACITY 1/2" GPM @ 120 PSI, 1/2" GPM AT 80 PSI PRESSURE DROP. ACCESSORY CHECK VALVE ON INLETS, VOLUME CONTROL, SHUT-OFF VALVE ON OUTLET, ITEM THERMOMETER ON OUTLET, STRAINER STOP CHECKS ON INLETS. CABINET: 18 GAUGE STAINLESS STEEL, NON RECESSED MOUNTING WITH REVED LOCK. MOUNT 1/2" IN PIPING UNDER LAVATORIES AND SINKS. LEAD FREE.

NOTES:

- ROUGH-IN SUPPLY WASTE AND VENT PIPE SIZES INDICATED ARE MINIMUM SIZES SHOWN FOR ROUGH-IN ONLY.
- COORDINATE WITH PLUMBING FIXTURE MANUFACTURERS INSTALLATION DRAWINGS FOR PROPER INSTALLATION OF ALL FIXTURES.
- ALL PLUMBING FIXTURES SHALL BE COMPLETELY ROUGH-IN BY THE PLUMBING CONTRACTOR AND SHALL MEET ALL CODES HAVING JURISDICTION.
- ALL FIXTURES TO BE COMMERCIAL GRADE UNLESS OTHERWISE NOTED.
- PROVIDE A WATER HAMMER ARRESTOR IN PIPING TO ALL FIXTURES AND/OR FIXTURE BANKS.

PLUMBING FIXTURE SCHEDULE



MARATHON
CANTON TRUCK FACILITY
4211 23rd STREET SW
CANTON, OHIO, 44706



NO.	DATE	BY	REVISIONS	DATE	BY	REVISIONS
1	1/22/15		PERMIT COMMENT RESPONSE			
3	7/27/15		OWNER COMMENTS			



PLUMBING SCHEDULES AND RISERS
P-701
CANTON TRUCK FACILITY
CANTON OH ISSUE FOR PERMIT

DATE	FEB. 6, 2015
BY	PBK
DATE	
BY	
DATE	
BY	

ISSUE FOR 100% REVIEW 13/04

All waste & vent lines are 4" or 4" EBC plastic pipe & fittings.
 All water (in & out type I, Copper lead free)
 All fittings & valves for water piping are lead free.
 All water joints water waste shall lead free solder & flux.
 All fixtures & trim for sink and lead free.

Albert B. Zimshof
 Consultant Plumbing Co., Inc.
 2/21/17

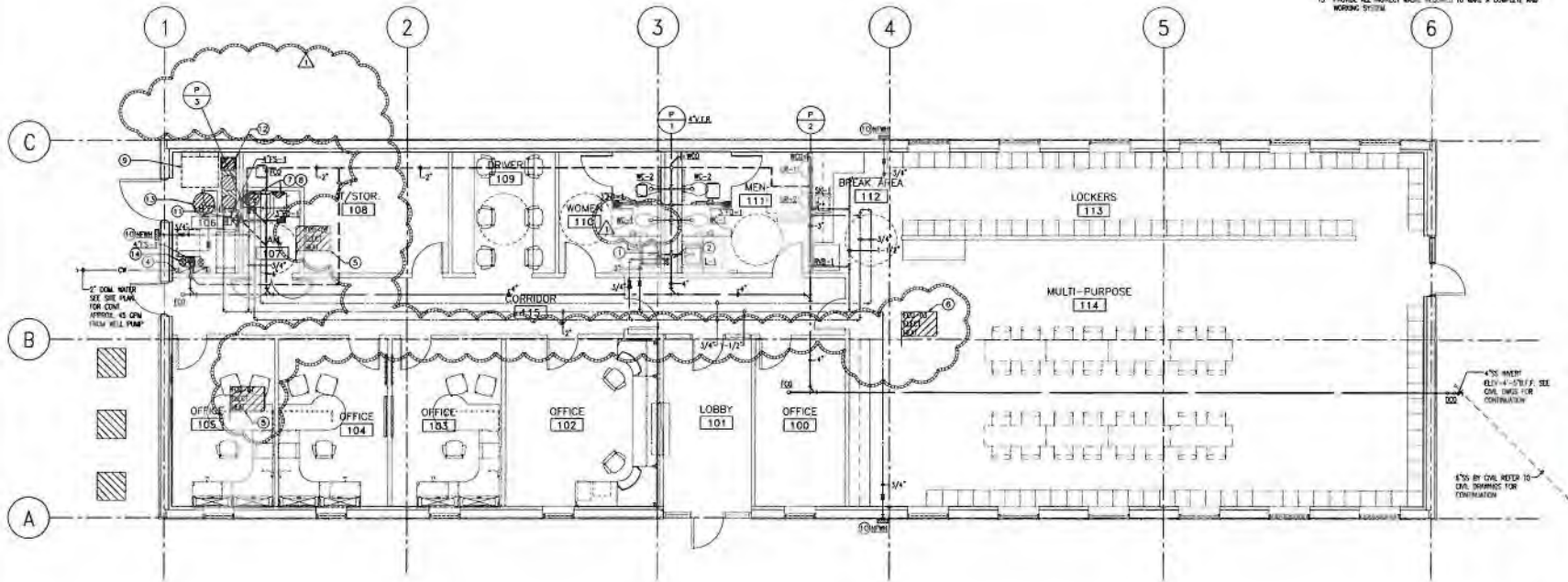
KEYED NOTES:

- 1 2" W. DOWN IN CHASE AND BRANCH TO TOILETS
- 2 2" VENT DOWN, COMBINE MULTIPLE VENTS AT 4" STAFF
- 3 EXTERIOR CHECK BACKFLOW PREVENTER
- 4 REDUCED PRESSURE BACKFLOW PREVENTER
- 5 PROVIDE FULL SIZE CONDENSATE DRAIN WITH DEEP SEAL P-TAP AND VENT ROUTE TO FLOOR SINK IN MECHANICAL ROOM
- 6 PROVIDE FULL SIZE CONDENSATE DRAIN WITH DEEP SEAL P-TAP AND VENT ROUTE TO FILL PITCH ON SINK
- 7 0-1/2" ELECTRIC WATER HEATER EQUAL TO A.O. SMITH MODEL NO. 400-30 30 GALLON CAPACITY 120 VOLT, 4800/140 SINGLE ELEMENT AT 8.0 BAR. SHALL MOUNT AS HIGH AS POSSIBLE ABOVE WAP SINK IN 2" DEEP SHEET METAL DRAIN PAN WITH 1/4" DRAIN AND SHALL HAVE TWO RELIEF VALVE PORTS RESPONDINGLY TO WAP SINK. VERIFY VOLTAGE AND PHASE WITH ELECTRICAL CONTRACTOR PRIOR TO RECEIVING EQUIPMENT
- 8 0-1/2" OPERATION PUMP 1/25-P, ALL BRONZE CONSTRUCTION. 120V/1PH WITH HOUSING AND TIMER MOUNT IN SERVICEABLE LOCATION
- 9 COORDINATE PLUMBING PIPING WITH ELECTRICAL PANELS IN THIS ROOM. PIPING SHALL NOT RUN DIRECTLY OVER ELECT. PANELS OR TRANSFORMERS
- 10 PROVIDE NON-FREEZE WASTE LINE WITH WASTON BREAKER AND NO REDUCED WASTE SIDE WITH 3/4" X 1/2" CONNECTION EQUAL TO ZURN MODEL NO. 21345
- 11 VARIABLE SPEED BOOSTER PUMP EQUAL TO ORANPICO MODEL NO. 4000000 2.5 HP 24" I.D. COMPLETE WITH 0-1/2" IN CONTROLLER, SHP. 480/240. CAPACITY OF 24 GPM WITH AN INLET PRESSURE OF 14' AT 45 GPM WITH BRONZE CONSTRUCTION. FINAL PUMP SELECTION WILL BE DETERMINED AFTER WELL HAS BEEN DRILLED AND MEASURING WATER PRESSURE DETERMINED.

- 12 WATER SOFTENER EQUAL TO WATTS SERIES PW0201121, 4 CUBIC FOOT 2" DUPLEX ALTERNATING SOFTENER WITH FLOW METER WITH 0-1" PASS. FUSED WATER GUARDIANES. PW 8-10. TANK/VALVE DEPENDS ON CUSTOMER ACCEPTABLE LEVEL. WATER PRESSURE 20-120 PSI. 24" 110V. FUSE CHLORIDE MAXIMUM OF 2MG/L. IRON MAXIMUM OF 1MG/L. TANK/VALVE LESS THAN 50 W.G. OIL AND 4000 AND 4000 ARE NOT ALLOWED. REQUIRES 120V INCHES FOR CONTROL POWER. FINAL WATER SOFTENER SELECTION WILL BE DETERMINED AFTER WELL HAS BEEN DRILLED AND MEASURING WATER QUALITY AND PRESSURE DETERMINED.
- 13 WELL TANK EQUAL TO AMTROL, WELL-8-TRO, 5000 WELLS, 60 WY-100 AND CHECKVALVE OR DISCONNECT BY WATER WELL PROMER
- 14 3" IN-LINE FILTERS SET-UP IN A REVERSE FLOW METHOD. FILTERS SHALL BE EQUAL TO WATTS PERFORMANCE FOR 4-1/2" FILTER CAPTRICES. PROVIDE 12 ADDITIONAL 1/2" 2" FILTERS. PROMER SHALL MOUNTED OVER 15 SUPPORT FILTERS ABOVE THE 4-1/2" P.P.

GENERAL NOTES:

- 1 THE PLUMBING CONTRACTOR SHALL COMPLY WITH ALL ACTIVITIES INVOLVING APPROPRIATION
- 2 ALL FINAL CONNECTIONS TO FIXTURES AND EQUIPMENT SHALL BE MADE BY THE PLUMBING CONTRACTOR
- 3 ALL PLUMBING WORK SHALL BE COORDINATED WITH ALL OTHER TRADES PRIOR TO ANY INSTALLATION OF ALL PLUMBING FIXTURES AND EQUIPMENT BY THE PLUMBING CONTRACTOR
- 4 ALL FLOOR DRAINS AND FLOOR SINKS SHOWN ON THIS DRAWING SHALL BE COORDINATED WITH ALL OTHER TRADES PRIOR TO INSTALLATION
- 5 REFER TO ARCHITECTURAL DRAWING FOR EXACT LOCATIONS OF FIXTURES, EQUIPMENT, ETC. DO NOT SCALE FROM PLUMBING DRAWINGS
- 6 ALL WALL CLEAN OUTS SHALL BE ACCESSIBLE BY AN ACCESS PANEL
- 7 PROVIDE A DOUBLE EXTERIOR CLEANOUT (DICO) ON ALL SANITARY LINES EXTERIOR THE BUILDING
- 8 ALL FLOOR DRAINS AND FLOOR SINKS SHALL BE PROVIDED WITH A TRAP PRIMER
- 9 FIXTURES DESIGNED AS ADA ACCESSIBLE BY ARCHITECT SHALL BE INSTALLED AT AN ACCESSIBLE HEIGHT PER ARCHITECTURAL DETAILS
- 10 ALL DOMESTIC COLD AND HOT WATER TRAP-OFFS SHALL HAVE AN ISOLATION SHUT-OFF VALVE
- 11 CONTRACTOR SHALL DETERMINE AN AREA AT OR BEYOND GRADE PRIOR TO SETTING CONNECTION
- 12 FLOOR DRAINS AND FLOOR SINKS IN MECHANICAL ROOMS SHALL BE SET NOT LESS THAN 8" FROM HORIZONTAL FINISH. BE MECHANICAL FINISHES. DO NOT PLACE ON OR IN HORIZONTAL FINISH OR UNDERGROUND CONNECTIONS
- 13 PLACE A TRAP PRIMER (TP-1) AND A HOSE REEL (HR-2) IN ALL MECHANICAL ROOMS
- 14 CONTRACTOR OBTAIN SUBMITTALS FROM P&C FOR ALL HUB CAST IRON MATERIALS SPECIFIED ABOVE CODE
- 15 PROVIDE ALL PROJECT WASTE REQUIRED TO MAKE A COMPLETE AND WORKING SYSTEM



1 PLUMBING FLOOR PLAN
 SCALE: 3/8"=1'-0"



11 Greenway Plaza, 22nd Floor
 Houston, TX 77046
 713-965-4508 P
 713-961-4511 F
 PBK.com

MARATHON
CANTON TRUCK FACILITY
4211 23rd STREET SW
CANTON, OHIO, 44706



NO.	DATE	BY	REVISIONS	PERMIT COMMENTS RESPONSE:
1	1/25/18			



PLUMBING FLOOR PLAN
P-201

CANTON TRUCK FACILITY
 CANTON, OH ISSUE FOR PERMIT

SCALE: 3/8"=1'-0"
 DATE: FEB. 6, 2015
 DRAWN BY: PBK
 CHECKED BY:
 ALL IN S.C.

(SHEET NO.)

13/04

ISSUE FOR 100% REVIEW

BY: ALBERT B. ZIMSHOF, REGISTERED PROFESSIONAL ENGINEER, LICENSE NO. E-77096, MECHANICAL, STATE OF OHIO, EXPIRES 03/31/18.



Spreadsheet for lead and copper sample sites

* = Required field

Please return to Michael.deal@epa.ohio.gov with subject "Lead and Copper SMP IDs" by JANUARY 15th, 2017

PWS ID*	PWS Name*	SMP ID*	Tier Site*	Street Address*	City*	State*	Zip*	Tap Location*	Resident Name*	Resident (Home) Phone #*	Resident (Cell) Phone #*	Resident Email	Plumbing Age*	Type of Interior Plumbing	Service Line Material*	Structure Type*
OH7677624	Marathon Petroleum Company-Canton Truck	LC201	Other	4211 23rd Street SW	Canton	OH	44708	Breakroom Sink	NA	NA	NA	NA	CuPb>82	Plastic	Copper	BLDG
OH7677624	Marathon Petroleum Company-Canton Truck	LC202	Other	4211 23rd Street SW	Canton	OH	44708	Men's Sink	NA	NA	NA	NA	CuPb>82	Plastic	Copper	BLDG
OH7677624	Marathon Petroleum Company-Canton Truck	LC203	Other	4211 23rd Street SW	Canton	OH	44708	Women's Sink	NA	NA	NA	NA	CuPb>82	Plastic	Copper	BLDG