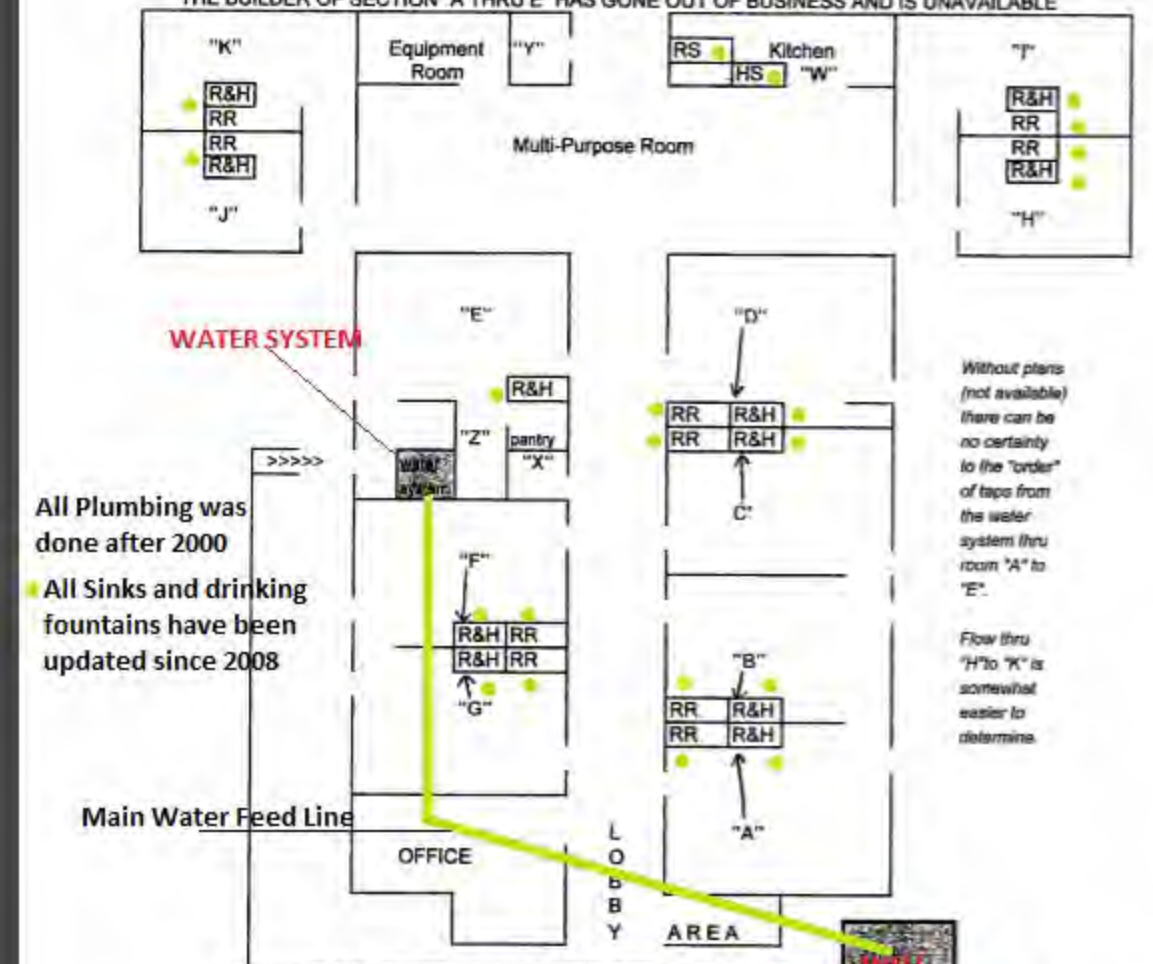


Granville Child Care Center
OH 4562312 Facility ID DS1

WATER FLOW POSITIONS/DIRECTIONS AS BELIEVED TO EXIST AT GCCC
(NOT to scale, for use ONLY in locating site taps)
GCCC IS OPEN WEEKDAYS FROM 6:30AM TO 6:00PM (ANY NAP TIMES BETWEEN NOON & 3:00PM)
THE BUILDER OF SECTION "A THRU E" HAS GONE OUT OF BUSINESS AND IS UNAVAILABLE



All Plumbing was done after 2000
All Sinks and drinking fountains have been updated since 2008

Without plans (not available) there can be no certainty to the "order" of taps from the water system thru room "A" to "E".
Flow thru "H" to "K" is somewhat easier to determine.

No galvanized pipe used in the water system. Architect's office has no GCCC plumbing plans, but states (3-14-18) that all solder used was lead free. Mount Water Well Drilling affirms that the water system they built used copper lines only and that the line from the well to the inside was copper also.

- > "A" Thru "I"..... Classroom location front to back
- > R&H..... Reg "classroom" sinks, separate hand sink to the side
- > RR..... Child restrooms, with lavatory/s
- > E..... Room sink only, kids in "D" & "E" share "D" restroom
- > W..... A kitchen sink, with near-by hand sink
- > X..... Staff only restroom, with lavatory
- > Y..... Child or adult restroom, with lavatory
- > Z..... Kitchen/Pantry with sink basin, hand sink to its left

