

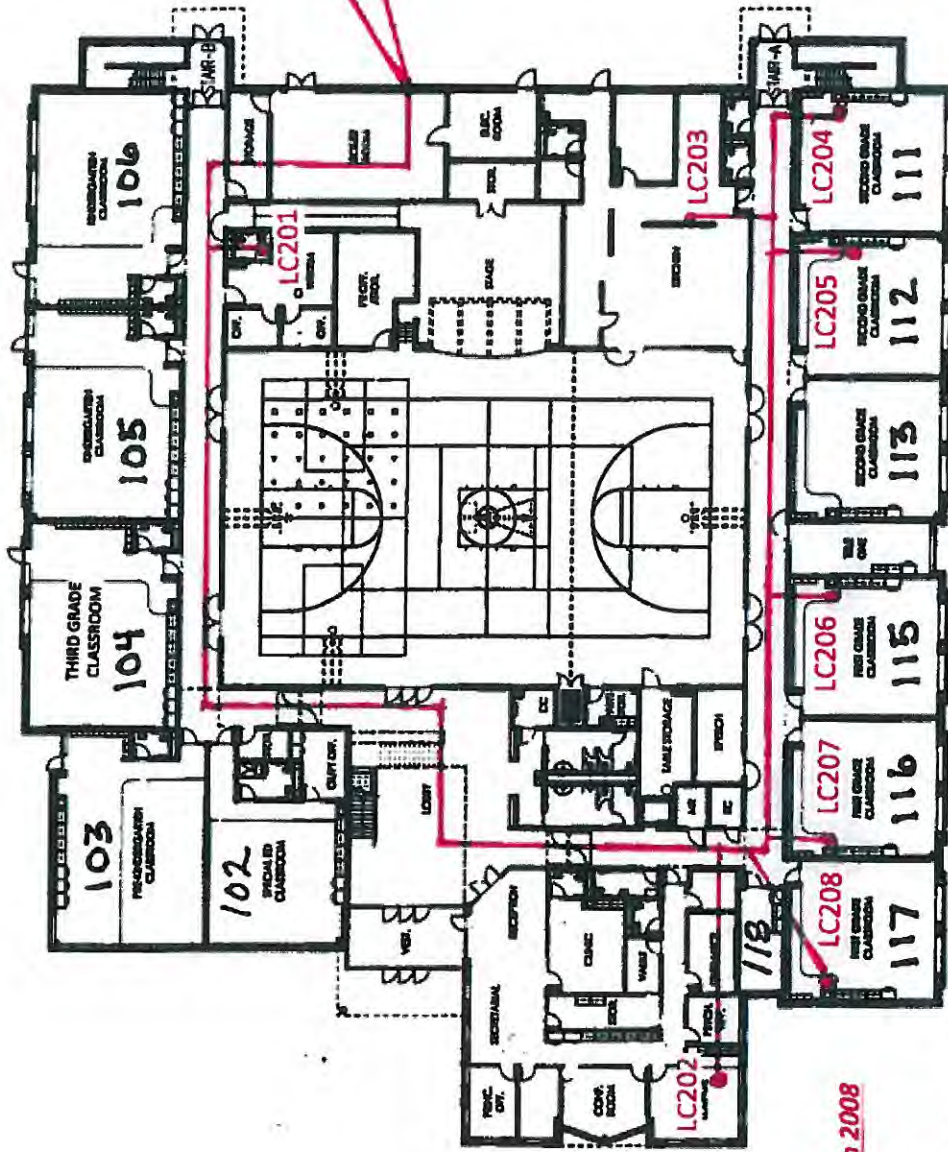
Fairbanks Elementary

11140 St. Rt. 38

Milford Center, Ohio 43045

Lead and Copper Sample Locations

Rec'd  
2/28/17  
EPA/COU/DW



Well Casing and Service Line

Well Casing and Service Line

Building constructed in 2008

Wells -PVC

Distribution lines- Copper

Type of system- Nontransient Noncommunity

FAIRBANKS ELEM: FIRST FLOOR ROOM NUMBER PLAN

Contact- Scott Shively

Phone- 740-972-4253

Email- [sshively@fairbankspanthers.org](mailto:sshively@fairbankspanthers.org)

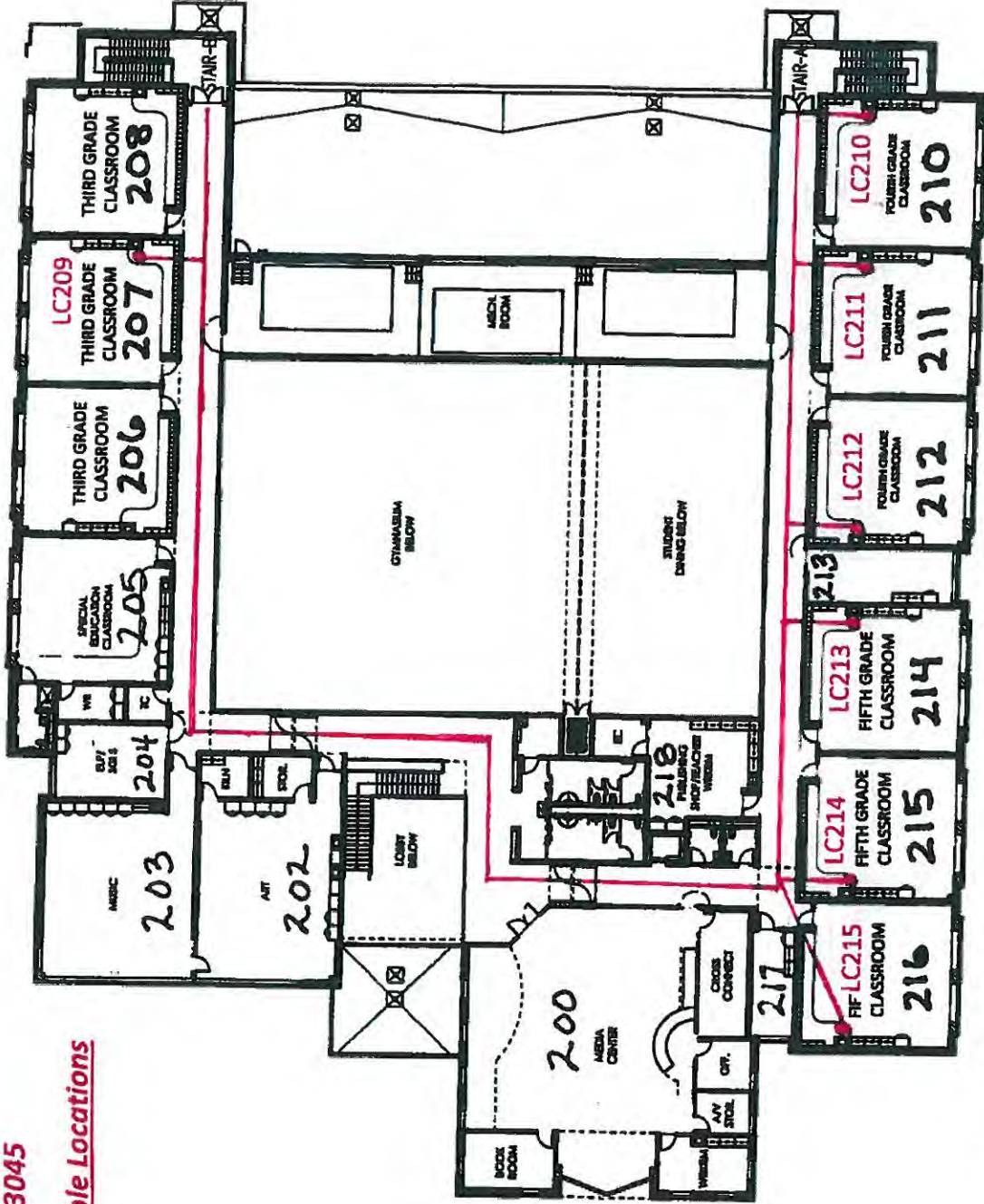
Fairbanks Elementary

11140 St. Rt. 38

Milford Center, Ohio 43045

Lead and Copper Sample Locations

Rec'd  
2/8/17  
OEM/CA/pw



**FAIRBANKS ELEM: SECOND FLOOR ROOM NUMBER PLAN**

RE Fairbanks Elem  
Report  
DW  
Union Co.

01-1 8039912