

RE: Findlay City
Report
Drinking Water Program
Hancock County
PWS ID: OH3200111

RECEIVED

FEB 27 2017

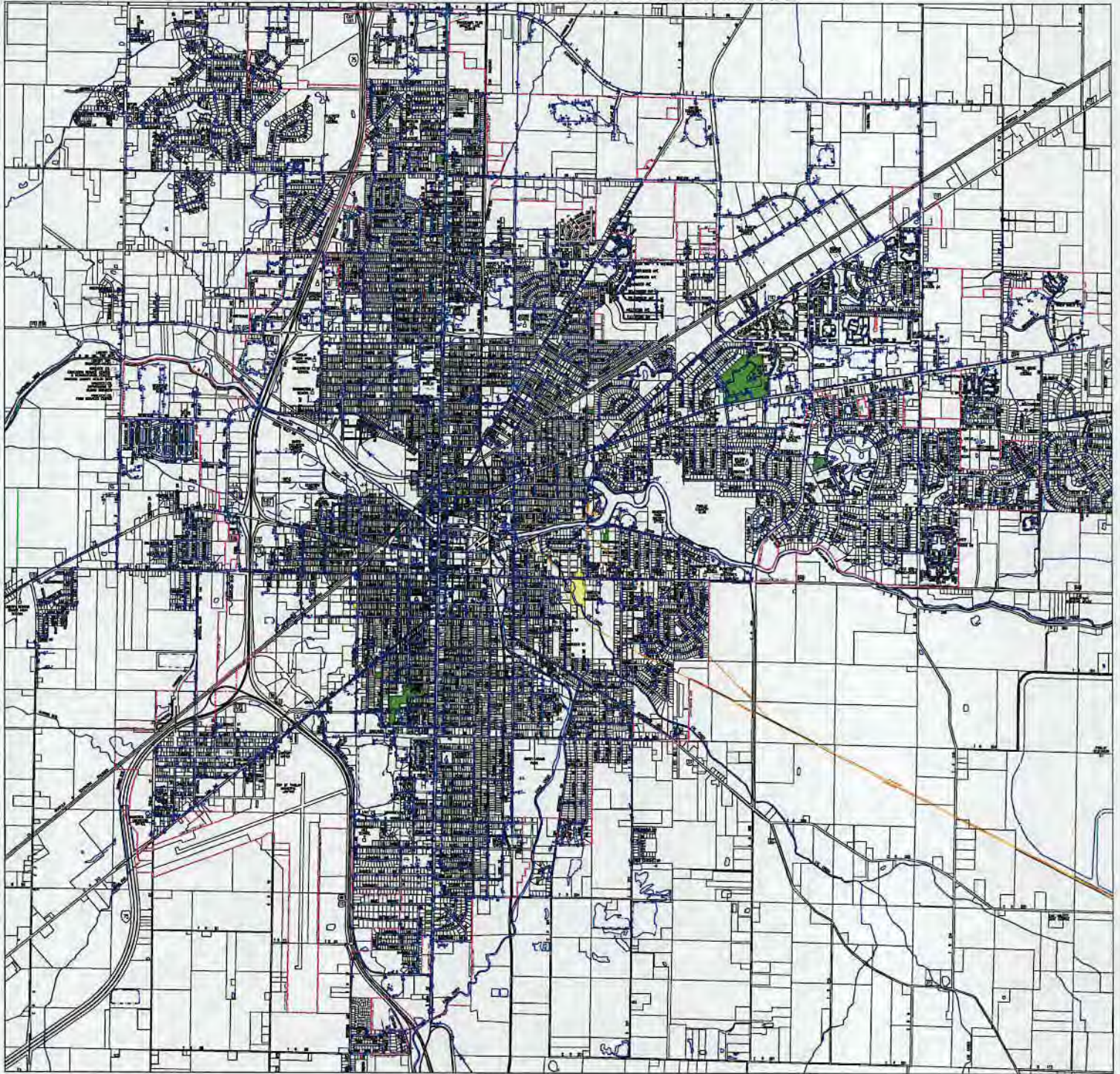
DDAGW - NWDO



FINDLAY, OH
LEAD WATER SUPPLY SERVICES

Lead Service Line-Active
Unknown Service Line-Active

NOTE: Because it is practically impossible to determine the lead content of an existing fixture, fitting or pipe, it should be assumed that the manufacture or installation date is the primary indicator of the lead content. Therefore, the characteristics of buildings and piping solder or fixtures would be buildings built prior to 1998 or that use plumbing material or solder manufactured before 1998 may have materials with greater than 5% lead and are at a higher risk of contributing lead to the drinking water than materials manufactured after 1998. In addition, buildings built and plumbing materials manufactured after 2014 were required to have less than 0.2% lead by weight and have the lowest risk for contributing lead to the drinking water. It should be noted however that, although prohibited, some use of leaded solder or leaded components may have occurred after the prohibitions became effective.

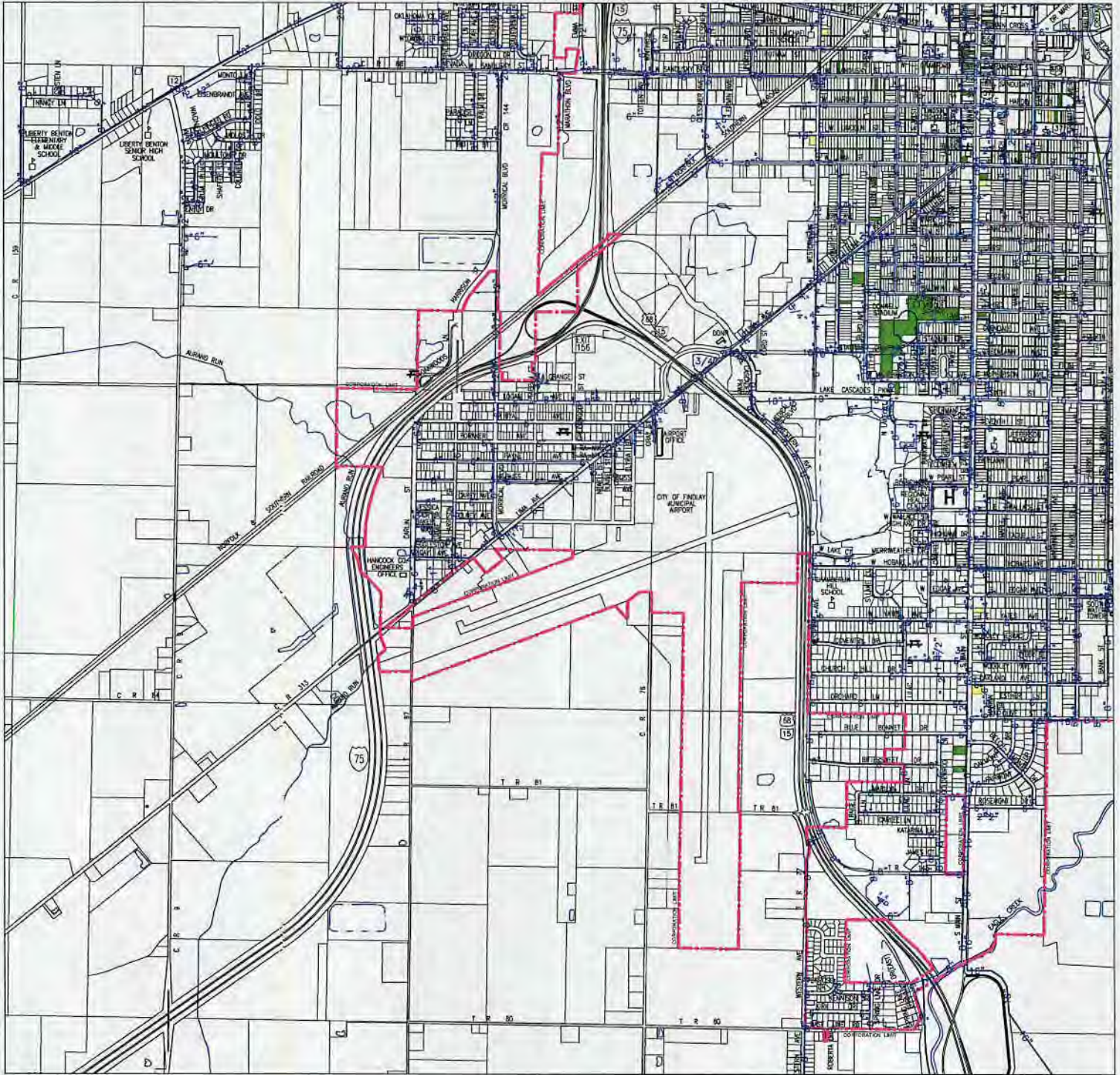




FINDLAY, OH SW LEAD WATER SUPPLY SERVICES

- Lead Service Line-Active
- Unknown Service Line-Active

NOTE: Because it is practically impossible to determine the lead content of an installed fixture, fitting or pipe, it should be assumed that the manufacture or installation date is the primary indicator of the lead content. Therefore, the characteristics of buildings and piping solder or fixtures would be buildings built prior to 1958 or that use plumbing material or solder manufactured before 1958 may have materials with greater than 8% lead and are at a higher risk of contributing lead to the drinking water than materials manufactured after 1958. In addition, buildings built and plumbing materials manufactured after 2014 were required to have less than 0.25% lead by weight and have the lowest risk for contributing lead to the drinking water. It should be noted however that, although prohibited, some use of leaded solder or leaded components may have occurred after the prohibitions became effective.

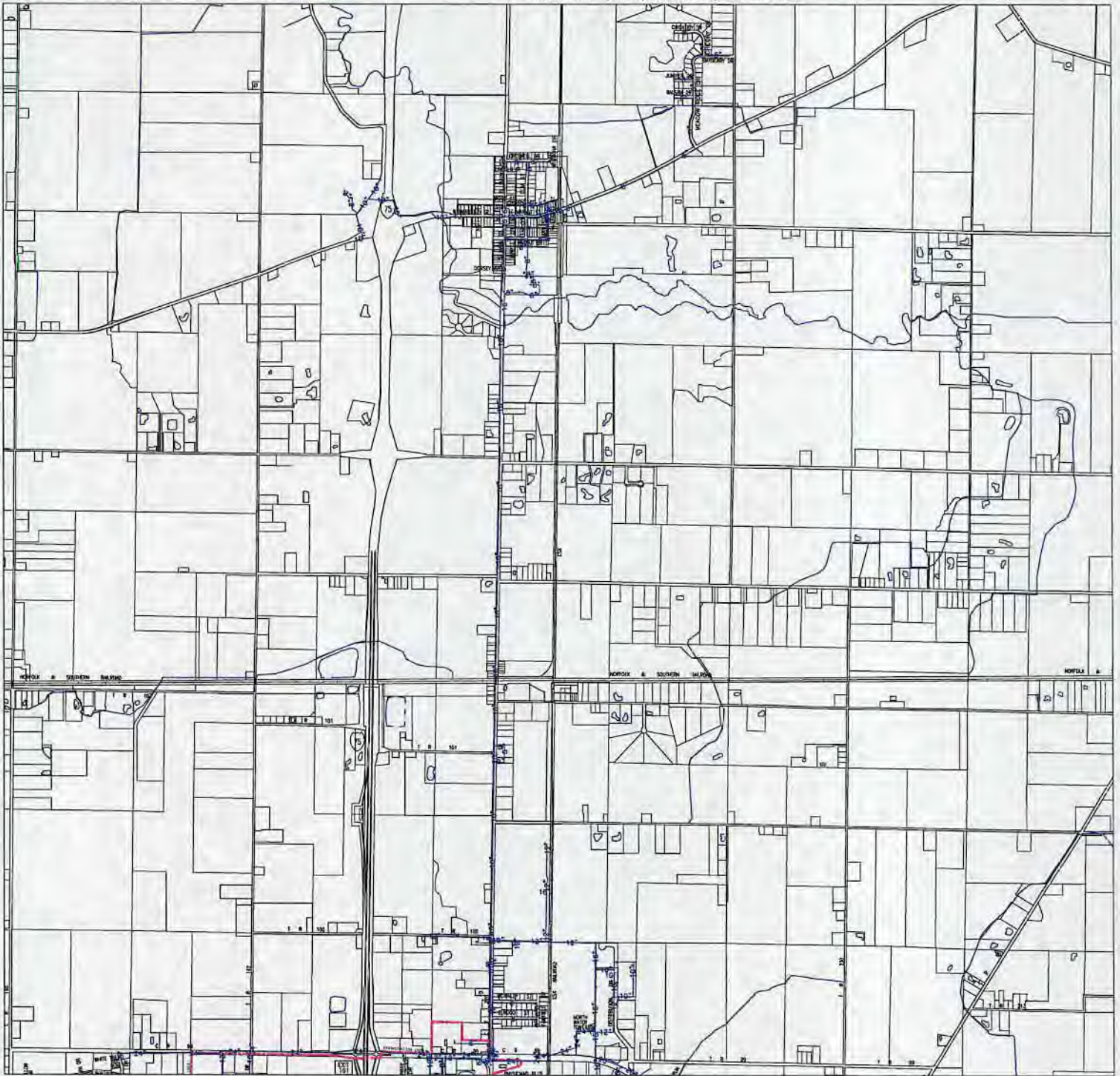




FINDLAY, OH VAN BUREN LEAD WATER SUPPLY SERVICES

■ Lead Service Line-Active
■ Unknown Service Line-Active

NOTE: Because it is practically impossible to determine the lead content of an installed fixture, piping or pipe, it should be assumed that the manufacture or installation date is the primary indicator of the lead content. Therefore, the characteristics of buildings and piping (sinks or fixtures) would be buildings built prior to 1998 or that use plumbing material or solder manufactured before 1998 may have materials with greater than 8% lead and are at a higher risk of contributing lead to the drinking water than materials manufactured after 1998. In addition, buildings built and plumbing materials manufactured after 2014 were required to have less than 0.25% lead by weight and have the lowest risk for contributing lead to the drinking water. It should be noted however that, although prohibited, some use of leaded solder or leaded components may have occurred after the prohibitions became effective.

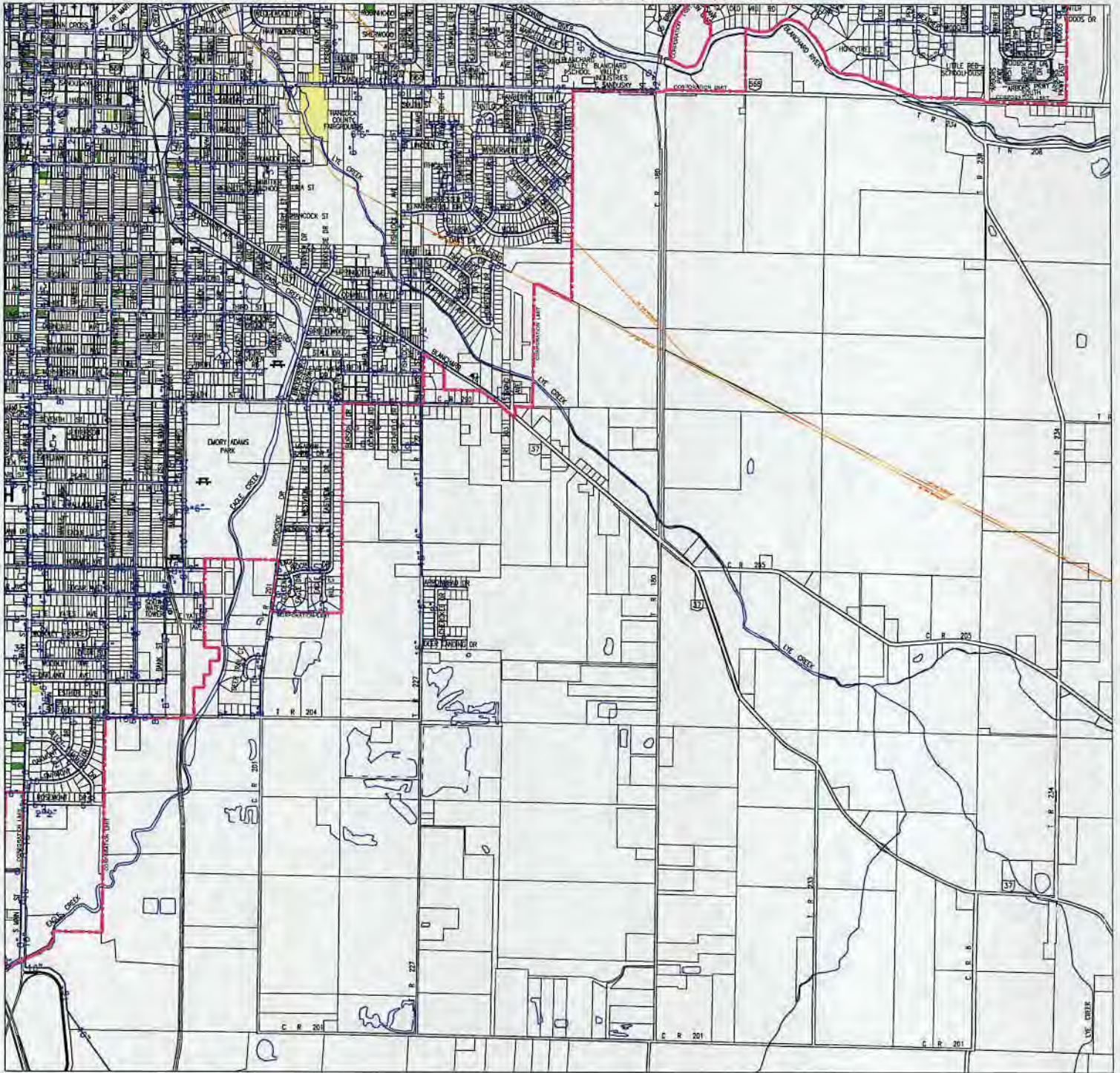




FINDLAY, OH SE LEAD WATER SUPPLY SERVICES

Lead Service Line-Active
Unknown Service Line-Active

NOTE: Because it is practically impossible to determine the lead content of an installed fixture, fitting or pipe, it should be assumed that the manufacture or installation date is the primary indicator of the lead content. Therefore, the characteristics of buildings and piping service or fixtures would be buildings built prior to 1998 or that use plumbing material or solder manufactured before 1998 may have materials with greater than 8% lead and are at a higher risk of contributing lead to the drinking water than materials manufactured after 1998. In addition, buildings built and plumbing materials manufactured after 2014 were required to have less than 0.25% lead by weight and have the lowest risk for contributing lead to the drinking water. It should be noted however that, although prohibited, some use of leaded solder or leaded components may have occurred after the prohibitions became effective.

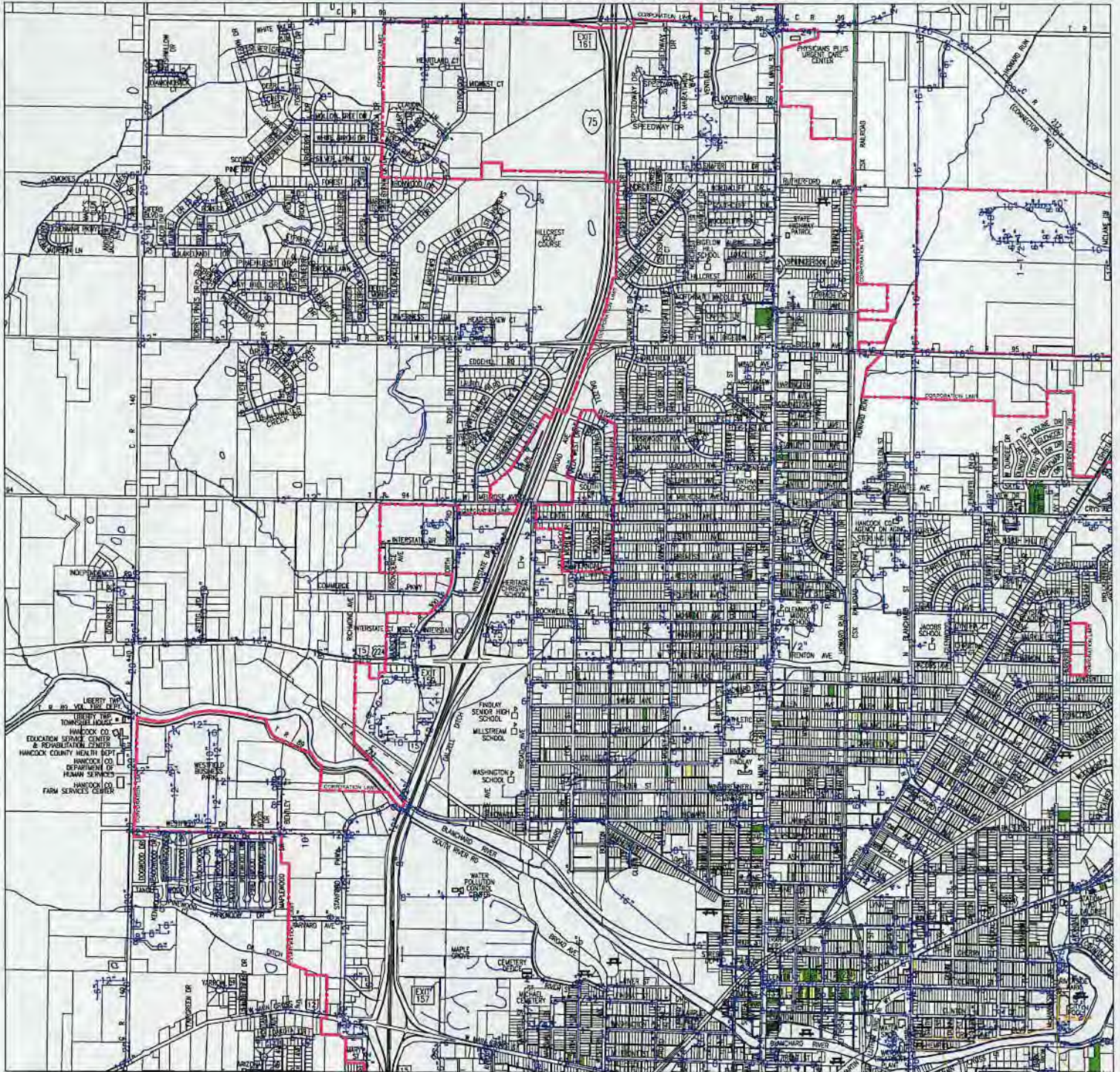




**FINDLAY, OH NW
LEAD WATER SUPPLY SERVICES**

■ Lead Service Line-Active
■ Unknown Service Line-Active

NOTE: Because it is practically impossible to determine the lead content of an installed fixture, fitting or pipe, it should be assumed that the manufacture or installation date is the primary indicator of the lead content. Therefore, the characteristics of buildings and piping valves or fixtures would be buildings built prior to 1958 or that use plumbing material or solder manufactured before 1958 may have materials with greater than 8% lead and are at a higher risk of contributing lead to the drinking water than materials manufactured after 1958. In addition, buildings built and plumbing materials manufactured after 1958 were required to have less than 0.25% lead by weight and have the lowest risk for contributing lead to the drinking water. It should be noted however that, although prohibited, some use of leaded solder or leaded components may have occurred after the prohibitions became effective.





FINDLAY, OH NE LEAD WATER SUPPLY SERVICES

■ Lead Service Line-Active
■ Unknown Service Line-Active

NOTE: Because it is practically impossible to determine the lead content of an installed fixture, fitting or pipe, it should be assumed that the manufacture or installation date is the primary indicator of the lead content. Therefore, the characteristics of buildings and piping water or fixtures would be buildings built prior to 1996 or that use plumbing material or solder manufactured before 1996 may have materials with greater than 8% lead and are at a higher risk of contributing lead to the drinking water than materials manufactured after 1996. In addition, buildings built and plumbing materials manufactured after 2014 were required to have less than 0.25% lead by weight and have the lowest risk for contributing lead to the drinking water. It should be noted however that, although prohibited, some use of leaded solder or leaded components may have occurred after the prohibitions became effective.

