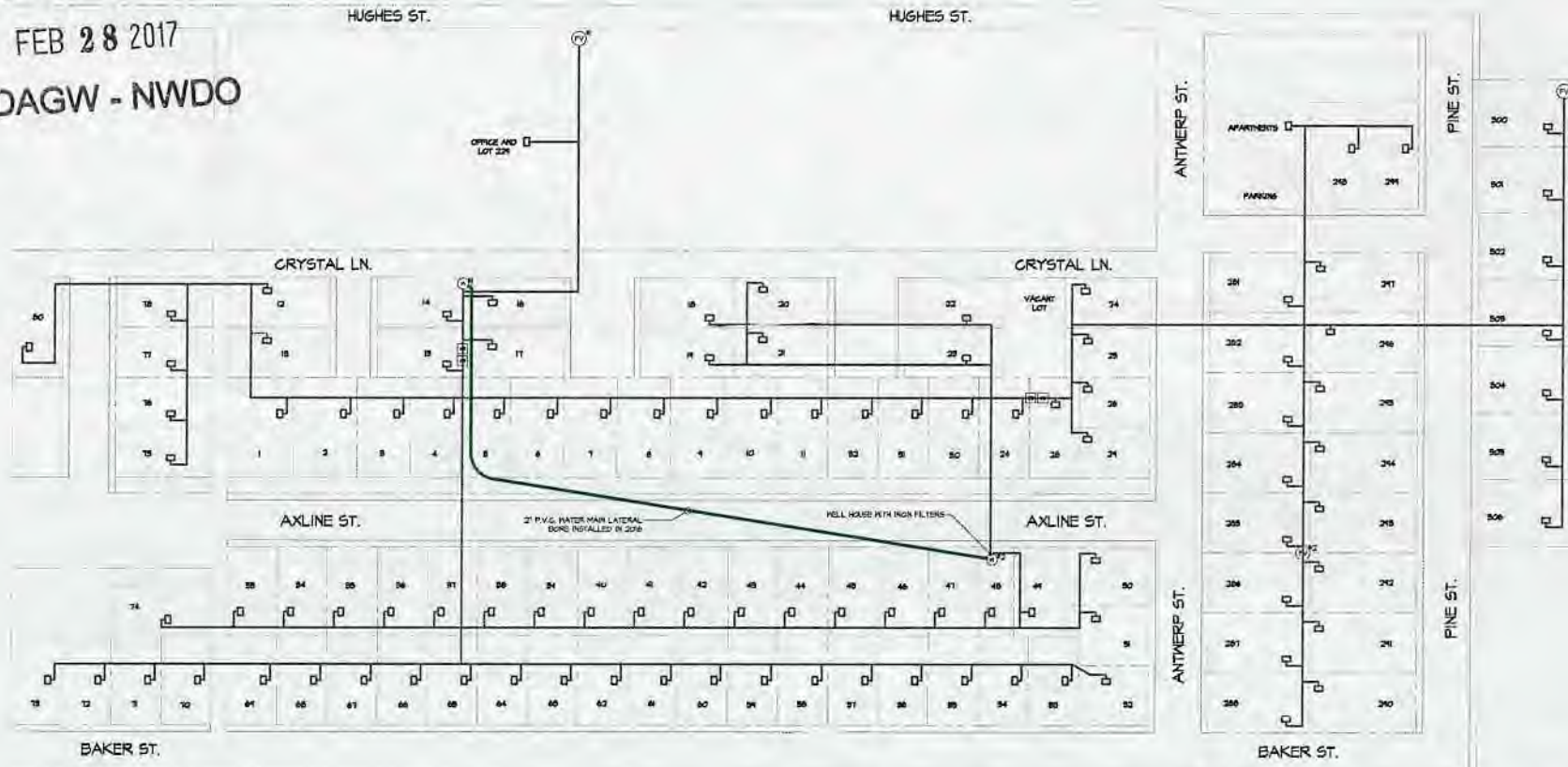


RE: Poplar Village MHP  
Report  
Drinking Water Program  
Seneca County  
PWS ID: OH7401212

RECEIVED

FEB 28 2017

DDAGW - NWDO



LEGEND

DESCRIPTION	SYMBOL	DESCRIPTION	SYMBOL
WELL	(W)	WATER MAIN (NO INFORMATION)	—
FLUSHING VALVE	(FV)	WATER MAIN (P.V.C.) ADDITION - 2016	—
VALVE BOX	(VB)		

NOTE: WATERLINE LAYOUT AND DISTRIBUTION INFORMATION IS BASED OFF OF HISTORICAL DATA PROVIDED BY THE EPA.

APPROXIMATE DATE OF DRAWING: 1976



NARRATIVE

- 1) MOBILE HOME COMMUNITY WITH AN OFFICE (1), AND APARTMENTS (3).
- 2) ORIGINAL DEVELOPMENT BEGAN BETWEEN 1965 AND 1968.
- 3) WATER DISTRIBUTION SYSTEM CONSISTS OF P.V.C., GALVANIZED PIPE, AND COPPER.
- 4) OF UNKNOWN AGES AND INSTALLATION DATES EXCEPT AS NOTED.
- 5) SERVICE CONNECTIONS ARE GALVANIZED WITH THREADED AND COMPRESSION FITTINGS AND COPPER PIPING WHICH UTILIZED COMPRESSION FITTINGS.



DRINKING WATER LEAD AND COPPER MONITORING REPORT

Report Title: Poplar Village SHP  
 Project: DDAGW - NWDO  
 Analytical Agency Name: Jones & Hovey Labs  
 Laboratory Certificate No.: 4117

Date of Sample	Sample Name	Laboratory Number	Address of Sample Site	Tap Type and Location	Flow Rate (GPM) or (LPM)	Sample Volume (L)	Flow Rate (GPM) or (LPM)	Flow Rate (GPM) or (LPM)	Lead (ppb)	Copper (ppb)
02/19/16	02-04	4102040	Lot 41	6" P' Galv	SHR	1.0	1.0	1.0	14.0	1
02/19/16	02-10	4102040	Lot 17	6" P' Galv	SHR	1.0	1.0	1.0	14.0	24
02/19/16	02-11	4102040	Lot 22	6" P' Galv	SHR	1.0	1.0	1.0	14.0	58
02/19/16	02-12	4102040	Lot 23	6" P' Galv	SHR	1.0	1.0	1.0	14.0	73
02/19/16	02-13	4102040	Lot 24	6" P' Galv	SHR	1.0	1.0	1.0	14.0	2

February 22, 2017

Poplar Village Mobile Home Park  
 12400 West Axline Street, Fostoria, OH 44830  
 Tel: (419) 436-7262

E.P.A. Lead Pipe Infrastructure Mapping

