

RE: Country Inn Enhanced Living
Report
Drinking Water Program
Paulding County
PWS ID: OH6333512

Country Inn Enhanced Living
OH633512

COMPLEX



Water lines
from well
to complex →

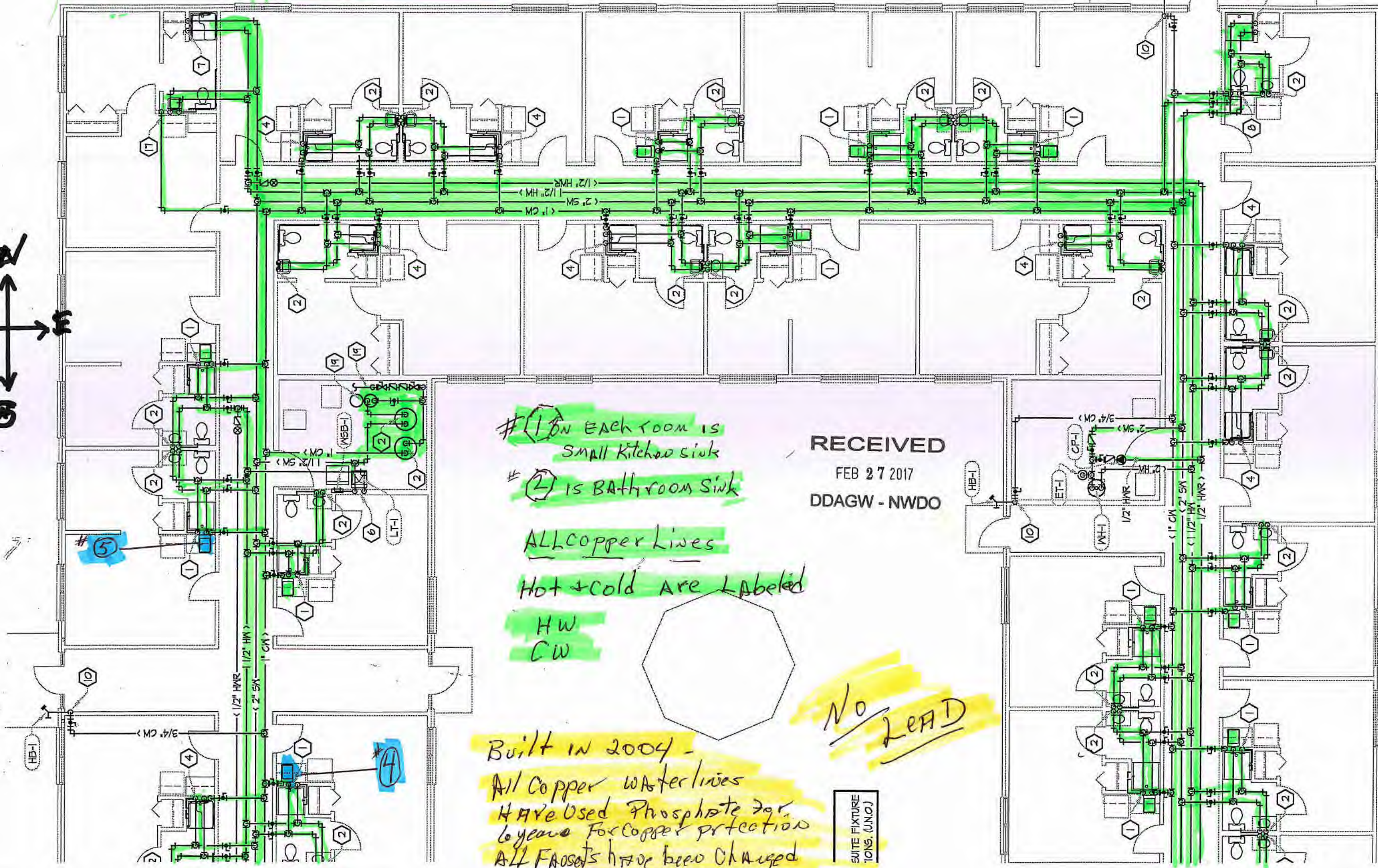
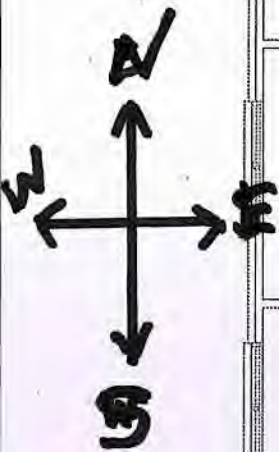
← complex

well
←

RECEIVED
FEB 27
DDAGW-NWDO

04 6333512

North End



#1 ON EACH ROOM IS
Small Kitchen sink

#2 IS BATHROOM SINK

ALL Copper Lines

Hot + Cold Are Labeled

HW
CW



RECEIVED
FEB 27 2017
DDAGW - NWDO

No LEAD

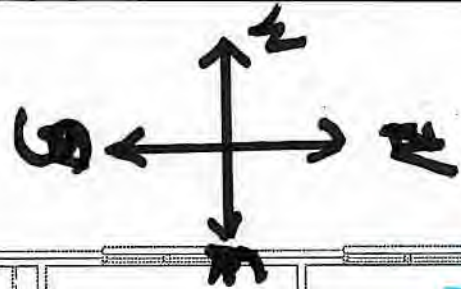
Built in 2004 -

All Copper waterlines

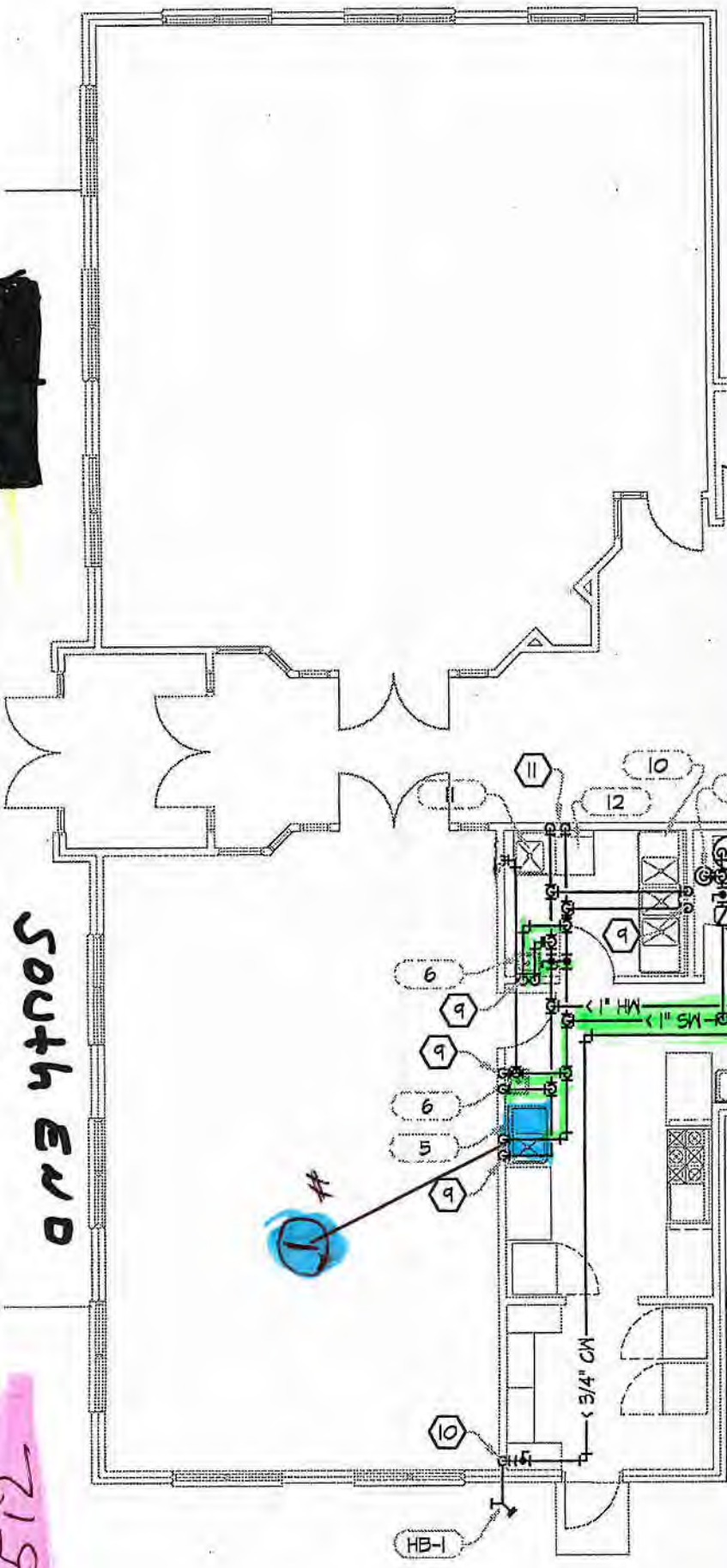
Have Used Phosphate for
6 years for copper protection

All Faucets have been changed

SUITE FIXTURE
TONS. (J.N.O.)

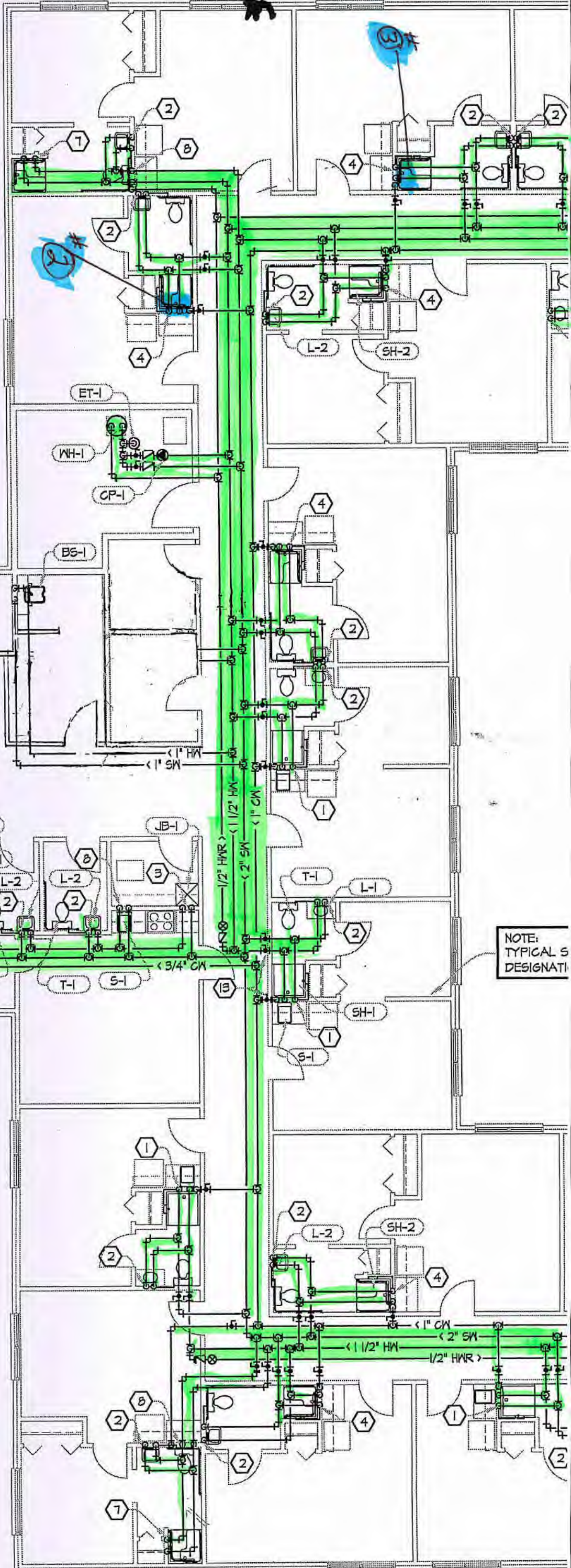


- Lead & Copper Sampling Sites**
 IN BLUE
- ① Kitchen Sink
 - ② Room # 2
 - ③ Room # 4
 - ④ Room # 6
 - ⑤ Room # 8



South End

PH 6333512



NOTE: TYPICAL S DESIGNATI