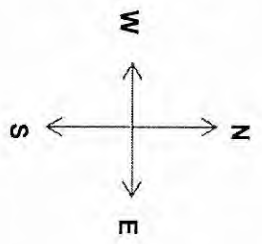
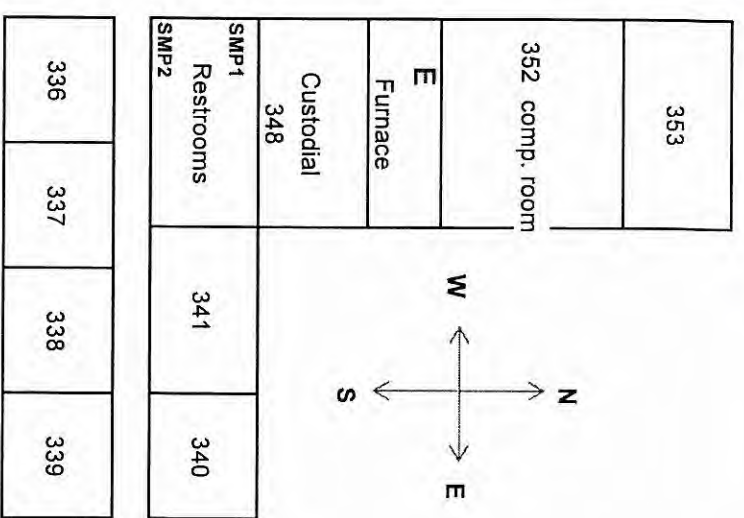
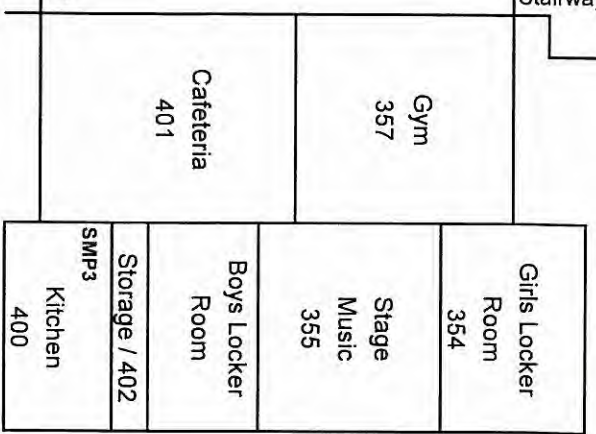
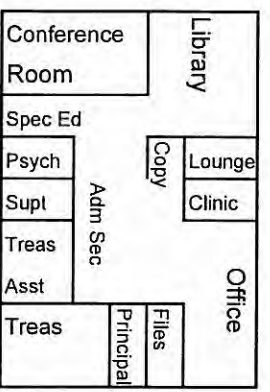
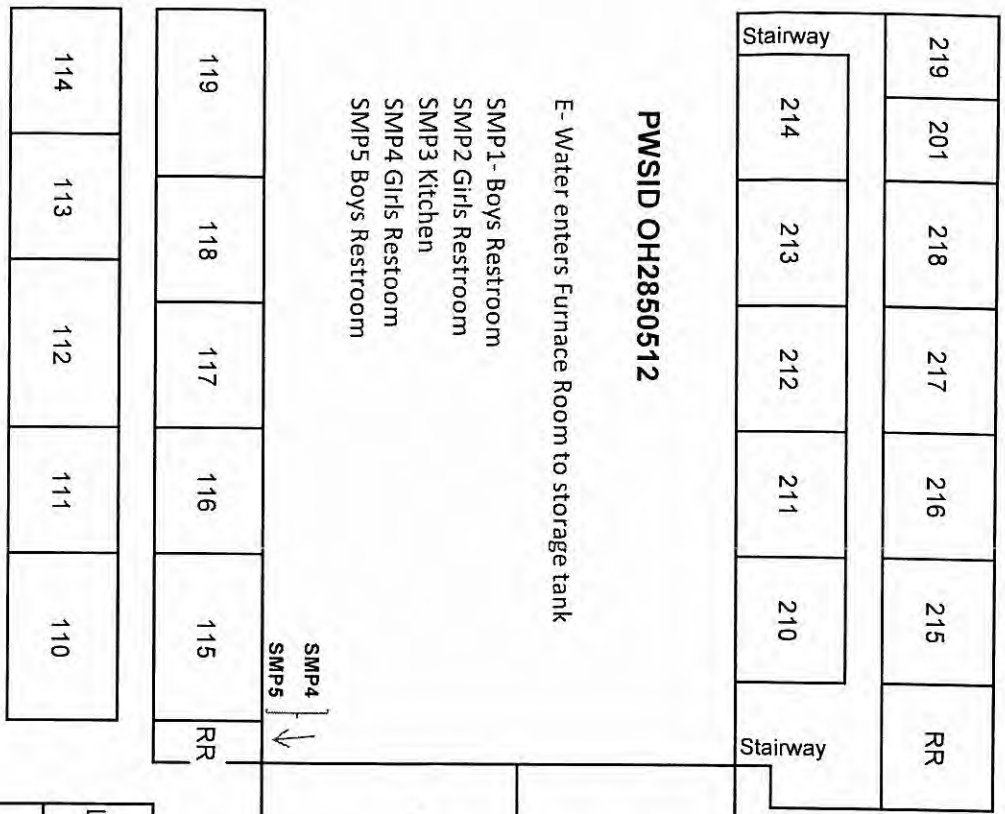


LEDGEMONT ELEMENTARY FLOOR PLAN
 16200 Burrows Road Thompson, OH 44086
 440-298-3341

Entity: Ledgemont Elementary
 Doc Type: REPORT
 Doc Subtype: DOAW
 Program: DOAW
 County: C. Swager
 Secondary ID: OH 2850512

~ Constructed Late 1970'; Took Occupancy 1981
 ~ Water piping copper and solder construction
may have 78% lead solder



RECEIVED
 FEB 10 2011

BY: