




# Holmes-Wayne Electric Cooperative, Inc.

330-674-1055 • 330-674-1869 (Fax) • 866-674-1055 or 888-264-2694 (Toll-free)  
P.O. Box 112 • 6060 S.R. 83 • Millersburg, OH 44654-0112

A Touchstone Energy® Cooperative 

Ohio EPA – NEDO,

This is the map document for compliance with House Bill 512 for PWS ID OH3849512, Holmes-Wayne Electric Cooperative, Inc. If you have any question or need further information please feel free to email me @ [nhartzler@hwecoop.com](mailto:nhartzler@hwecoop.com) or call my direct line listed below.

Thank you,

Nolan R Hartzler  
GIS Mapping Technician  
6060 State Route 83  
P.O. Box 112  
Millersburg, OH 44654  
330-674-1055  
330-763-2104 Direct Line  
330-674-1869 Fax

Entity: Holmes-Wayne Electric  
Doc Type: REPORT  
Doc Subtype: \_\_\_\_\_  
Program: DDAGW  
County: HOLMES  
Secondary ID: OH38 49512  
2 Doc in color

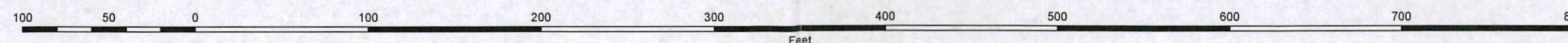
**RECEIVED**  
**JAN 09 2017**  
**OHIO EPA NEDO**



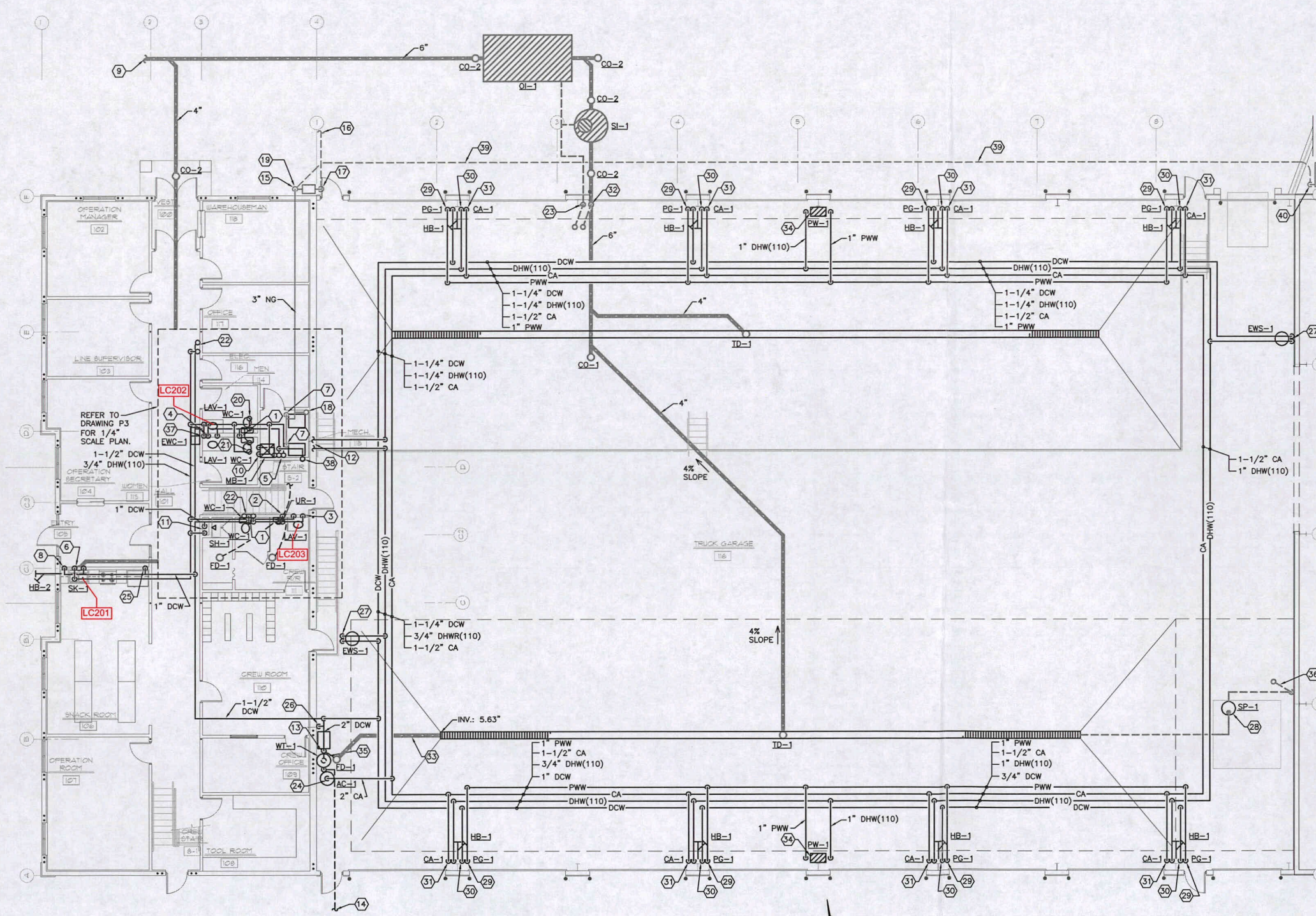


\*\*\*All new construction since 2005,  
all water lines are either copper or plastic.\*\*\*

**Holmes-Wayne Electric Cooperative Inc. PWS OH3849512**  
**6060 State Route 83 Millersburg, Oh 44654**







**PLUMBING LOWER LEVEL FLOOR PLAN**  
SCALE: 1/8" = 1'-0"

PLUMBING SYMBOL LEGEND		
ABBREVIATION	SYMBOL	DESCRIPTION
DCW	—	DCW—DOMESTIC COLD WATER
DHW(110)	—	DHW(110)—DOMESTIC HOT WATER 110°
DHW(140)	—	DHW(140)—DOMESTIC HOT WATER 140°
DHWR(110)	—	DHWR(110)—DOMESTIC HOT WATER RETURN 110°
PWW	—	PWW—PRESSURE WASH WATER
NG	—	NG—NATURAL GAS
CA	—	CA—COMPRESSED AIR
WC	—	WC—WATER CLOSET
UR	—	UR—URINAL
LAV	—	LAV—LAVATORY
SK	—	SK—SINK
SH	—	SH—SHOWER
EWS	—	EWS—EMERGENCY WASH STATION
MB	—	MB—MOP BASIN
EWC	—	EWC—ELECTRIC WATER COOLER
WH	—	WH—WATER HEATER
P	—	P—PUMP
MV	—	MV—MIXING VALVE
HB	—	HB—HOSE BIB
ET	—	ET—EXPANSION TANK
TP	—	TP—TRAP PRIMER
BFP	—	BFP—BACKFLOW PREVENTER
SP	—	SP—SUMP PUMP
FD	—	FD—FLOOR DRAIN
CO	—	CO—CLEANOUT
OI	—	OI—OIL INTERCEPTOR
SI	—	SI—SAND INTERCEPTOR
PW	—	PW—PRESSURE WASHER
PWG	—	PWG—PRESSURE WASH GUN
AC	—	AC—AIR COMPRESSOR
TD	—	TD—TRENCH DRAIN

- CODED NOTES**
- 30 1/2" DCW AND 1/2" DHW(110) WITH SHUT-OFF VALVES DOWN TO HOT AND COLD WATER HOSE BIB (HB-1). MOUNT HOSE BIB ON COLUMN IN LOCATION AS DIRECTED BY OWNER. INCLUDE ALL ADAPTERS AND HARDWARE AS REQUIRED.
- 31 1/2" COMPRESSED AIR LINE WITH VENT TYPE SHUT-OFF VALVE DOWN TO COMPRESSED AIR OUTLET (CA-1). MOUNT COMPRESSED AIR OUTLET ON COLUMN IN LOCATION AS DIRECTED BY OWNER. INCLUDE ALL ADAPTERS AND HARDWARE AS REQUIRED. REFER TO DETAIL DRAWING P5 FOR MORE INFORMATION.
- 32 ENCASE OILY WASTE LINE UNDER SLAB IN CONCRETE IF LINE PASSES UNDER COLUMN FOOTER. POUR ENOUGH CONCRETE TO EXTEND 3 FT. BEYOND FOOTER IN ALL DIRECTIONS AND 3 FT. THICK. VERIFY METHOD WITH GENERAL CONTRACTOR BEFORE WORKING.
- 33 FLOOR DRAIN (FD-1) DISCHARGE LINE TO INDIRECTLY DRAIN INTO END OF TRENCH DRAIN. INSTALL FLOOR DRAIN NEXT TO WATER WELL PRESSURE TANK.
- 34 MOUNT PRESSURE WASHER UNIT (PW-1) HIGH ON COLUMN IN LOCATION AS DIRECTED BY OWNER. PROVIDE 1" DHW(110) WITH SHUT-OFF VALVE TO UNIT AND 1" PRESSURE WASH WATER LINE FROM UNIT OUTLET TO PRESSURE WASH GUNS AS INDICATED. INCLUDE ALL ADAPTERS AND HARDWARE AS REQUIRED.
- 35 WELL PRESSURE TANK (WT-1) TO BE SIZED BY WATER WELL SYSTEM CONTRACTOR INCLUDED IN PLUMBING CONTRACT. PROVIDE ALL ACCESSORIES AND HARDWARE FOR A COMPLETE SYSTEM.
- 36 2" VENT PIPE FROM SUMP PUMP BASIN UNDERFLOOR UP ALONG WALL TO 3" VENT THROUGH ROOF. MAINTAIN 20 FT. CLEARANCE TO ALL INTAKE LOUVERS AND INFRARED HEATER COMBUSTION AIR INTAKE PIPES.
- 37 1/2" DCW WITH BALL VALVE DOWN TO WATER COOLER.
- 38 1/2" DCW UP TO MOP BASIN.
- 39 2" MEDIUM PRESSURE PLASTIC GAS LINE UNDERGROUND FOR EMERGENCY GENERATOR.
- 40 2" MEDIUM PRESSURE PLASTIC GAS LINE TO EMERGENCY GENERATOR. INCLUDE A RISER KIT, SHUT-OFF VALVE, PRESSURE REGULATOR, DIRT LEG AND UNION CONNECTION TO GENERATOR. COORDINATE ALL REQUIREMENTS WITH GENERATOR MANUFACTURER.

- SMC**  
STALEY MECHANICAL  
CONSULTING, INC.  
300 S. CHURCH STREET  
DOVER, OHIO 44604  
(330) 343-2543  
© COPYRIGHT 2005
- GENERAL NOTES**
- 1 SEE ARCHITECTURAL DETAILS FOR EXACT LOCATIONS AND DIMENSIONS OF EQUIPMENT, FIXTURES, OPENINGS AND OUTLETS. COMMUNICATE WITH ARCHITECT ANY DISCREPANCIES.
- CODED NOTES**
- 1 1/2" DCW DOWN TO WATER CLOSET(S).
- 2 3/4" DCW DOWN WITH SHOCK ABSORBER TO URINAL. 1/2" DCW DOWN WITH BALL VALVE TO TRAP PRIMER AND ROUTE 1/2" DCW TO ALL FLOOR DRAINS ON LOWER LEVEL.
- 3 1/2" DCW AND 1/2" DHW(110) DOWN TO LAVATORY.
- 4 3/4" DCW AND 3/4" DHW(110) DOWN WITH 1/2" DCW AND 1/2" DHW(110) TO EACH LAVATORY.
- 5 1-1/2" DCW UP TO WATER HEATER ON UPPER LEVEL. 1" DHW(110) AND 1/2" DHW(140) DOWN FROM UPPER LEVEL.
- 6 1/2" DCW AND 1/2" DHW(110) DOWN TO SINK.
- 7 1" NG WITH SHUTOFF VALVE, DIRT LEG AND UNION DOWN TO FURNACE.
- 8 1/2" DCW WITH BALL VALVE DOWN TO HOSE BIB (HB-2).
- 9 CONNECT NEW 6" SANITARY SEWER LINE TO SITE SANITARY SEWER LINE. SEE SITE PLAN FOR CONTINUATION.
- 10 1/2" DCW AND 1/2" DHW(140) DOWN TO MOP BASIN.
- 11 1/2" DCW AND 1/2" DHW(110) DOWN TO SHOWER.
- 12 1-1/4" DHW(110) FROM WATER HEATER ON UPPER LEVEL. 3/4" DHWR(110) TO WATER ON UPPER LEVEL. REFER TO DRAWING P2 FOR CONTINUATION.
- 13 1/2" DCW DOWN WITH BALL VALVE TO TRAP PRIMER AND ROUTE 1/2" DCW TO FLOOR DRAIN.
- 14 2" WATER SERVICE LINE TO WATER WELL. REFER TO SITE PLAN FOR CONTINUATION. THIS CONTRACTOR TO PROVIDE WELL SERVICE FOR A COMPLETE DOMESTIC WATER SERVICE. REFER TO SPECIFICATIONS FOR MORE INFORMATION.
- 15 3" NATURAL GAS UP ALONG WALL. PENETRATE BUILDING ABOVE CEILING.
- 16 EXTEND NATURAL GAS LINE TO EXISTING GAS SERVICE. FIELD VERIFY EXACT LOCATION.
- 17 NATURAL GAS SERVICE. PROVIDE RISER KIT, REGULATOR AND METER. INSTALL PER GAS CO. REQUIREMENTS.
- 18 3" NATURAL GAS UP TO UPPER LEVEL.
- 19 CONNECT 2" MEDIUM PRESSURE PLASTIC GAS LINE WITH SHUT-OFF VALVE TO HOUSE SERVICE AFTER METER BUT BEFORE PRESSURE REGULATOR. ROUTE UNDERGROUND TO EMERGENCY GENERATOR AS INDICATED.
- 20 1/2" DCW UP TO WATER CLOSET.
- 21 1/2" DCW AND 1/2" DHW(110) UP TO LAVATORY.
- 22 1/2" DCW AND 1/2" DHW(110) UP TO SINK.
- 23 3" VENT LINES UP ALONG WALL ON WARM SIDE OF BUILDING INSULATION. OFFSET LINES AND EXTEND THROUGH ROOF.
- 24 PROVIDE AND INSTALL AIR COMPRESSOR (AC-1). ROUTE DRAIN LINES TO FLOOR DRAIN. INCLUDE VENTED SHUT-OFF VALVE AND BRAIDED FLEX HOSE CONNECTOR AT UNIT. BOLT AIR COMPRESSOR TO FLOOR. COORDINATE EXACT LOCATION OF INSTALLATION WITH OWNER. REFER TO DETAIL ON DRAWING P5 FOR MORE INFORMATION.
- 25 1/2" DCW WITH SHUT-OFF VALVE AND DOUBLE CHECK BACKFLOW PREVENTER (BFP-1) DOWN TO ICE MAKER IN REFRIGERATOR.
- 26 1/2" DCW WITH SHUT-OFF VALVE AND BACKFLOW PREVENTER (BFP-1) DOWN TO ICE MACHINE. INDIRECT DRAIN LINE TO FLOOR DRAIN.
- 27 1-1/4" DCW AND 3/4" DHW(110) WITH SHUT-OFF VALVES DOWN TO EMERGENCY WASH STATION.
- 28 EXPLOSION-PROOF SUMP PUMP AND BASIN INSTALLED IN BOTTOM OF SERVICE PIT. ROUTE 2" PUMPED DISCHARGE WITH SHUT-OFF VALVE AND CHECK VALVES. TO END OF TRENCH DRAIN AS INDICATED.
- 29 1/2" PRESSURE WASH WATER PIPING WITH SHUT-OFF VALVE DOWN TO PRESSURE WASH GUN (PG-1). MOUNT PRESSURE WASH GUN ON COLUMN IN LOCATION AS DIRECTED BY OWNER. INCLUDE ALL ADAPTERS AND HARDWARE AS REQUIRED.



**FISHER-WIDDER**  
AND ASSOCIATES, ARCHITECTS INC.  
211 EAST FRONT ST. DOVER, OHIO 44622  
PHONE (330) 343-2543

New Addition For:  
**HOLMES WAYNE ELECTRIC COOPERATIVE, Inc.**  
6060 State Rt. 83 N., Millersburg, Ohio 44654

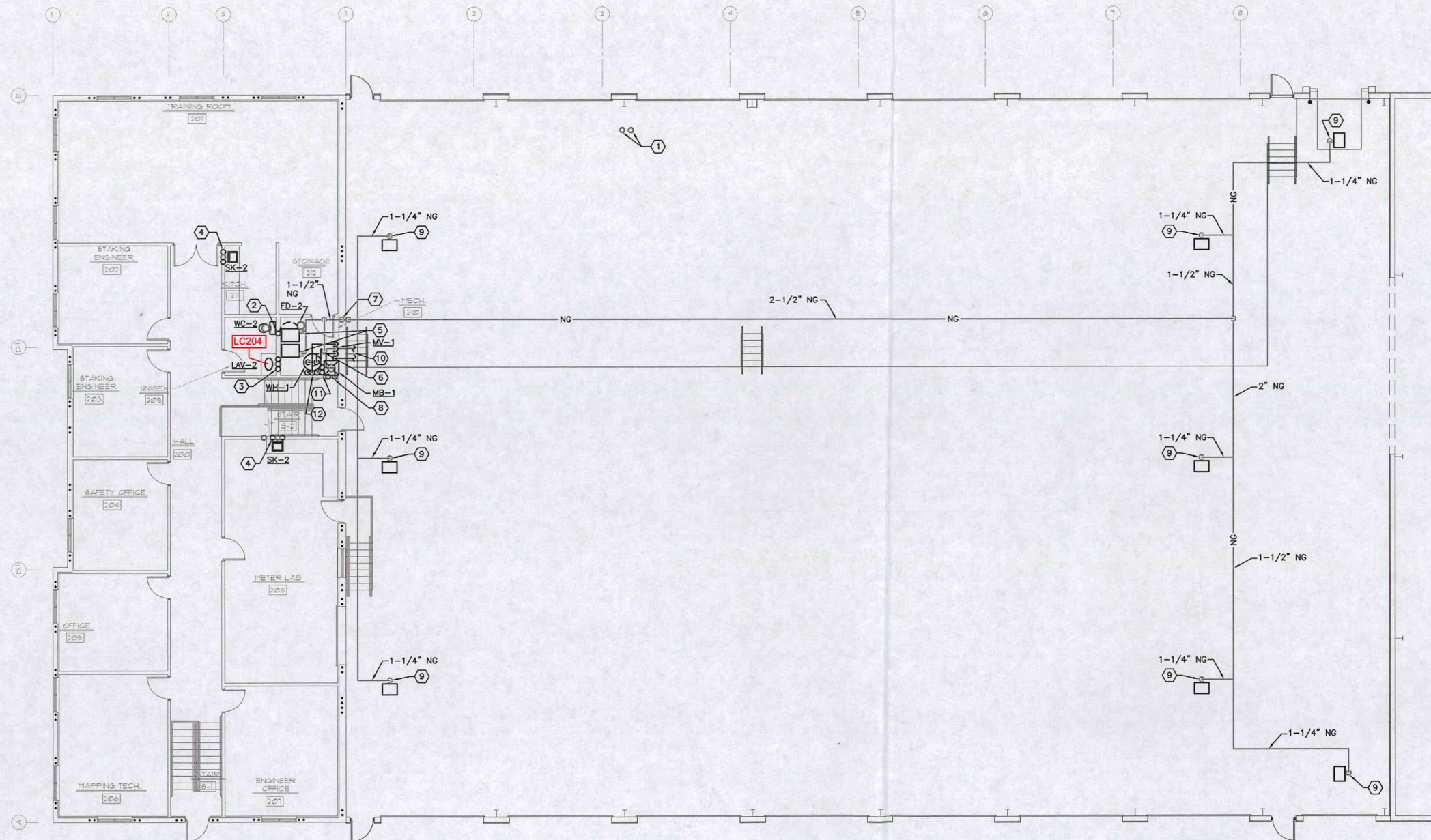
JOB NO.  
04-1905

DATE / REV.  
2-25-05

DRAWN BY: DCK

P1





# PLUMBING UPPER LEVEL FLOOR PLAN

SCALE: 1/8" = 1'-0"



SMC  
STALEY MECHANICAL  
CONSULTING, INC.  
300 S. CHAPEL STREET  
DOVER, OHIO 44604  
(330) 879-7343  
©COPYRIGHT 2015

## GENERAL NOTES

- SEE ARCHITECTURAL DETAILS FOR EXACT LOCATIONS AND DIMENSIONS OF EQUIPMENT, FIXTURES, OPENINGS AND OUTLETS. COMMUNICATE WITH ARCHITECT ANY DISCREPANCIES.

## CODED NOTES

- 3" OILY WASTE AND OIL INTERCEPTOR VENT LINES UP THROUGH ROOF WITH WEATHER-PROOF FLASHING.
- 1/2" DCW FROM BELOW TO WATER CLOSET. 1/2" DCW WITH BALL VALVE TO TRAP PRIMER. ROUTE 1/2" DCW TO FLOOR DRAIN TRAP PRIMER CONNECTION.
- 1/2" DCW AND 1/2" DHW(110) FROM BELOW TO LAVATORY.
- 1/2" DCW AND 1/2" DHW(110) FROM BELOW TO SINK.
- 1" NG WITH SHUTOFF VALVE, DIRT LEG AND UNION DOWN TO FURNACE (120 CFH).
- 1" NG WITH SHUTOFF VALVE, DIRT LEG AND UNION TO WATER HEATER (150 CFH).
- 3" NATURAL GAS FROM BELOW.
- 1/2" DCW FROM BELOW AND 1/2" DHW(140) TO MOP BASIN.
- 1-1/4" NG WITH SHUTOFF VALVE, DIRT LEG AND UNION TO INFRARED HEATER (150 CFH).
- 1-1/4" DHW(110) TO GARAGE AREA. 3/4" DHW(110) FROM GARAGE. REFER TO DRAWING P1 FOR CONTINUATION.
- 3" PVC WATER HEATER VENT AND COMBUSTION AIR PIPES UP THROUGH ROOF TO TERMINATION KIT BY MANUFACTURER.
- 1-1/2" DCW FROM LOWER LEVEL. 1" DHW(110) AND 1/2" DCW(140) DOWN TO LOWER LEVEL.

New Addition For:

HOLMES WAYNE ELECTRIC COOPERATIVE, Inc.

6060 State Rt. 83 N., Millersburg, Ohio 44654

JOB NO.  
04-1905

DATE / REV.  
2-28-05

DRAWN BY: DEK

P2

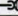
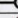










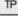

**FISHER-WIDDER**  
AND ASSOCIATES, ARCHITECTS INC.  
211 EAST FRONT ST. DOVER, OHIO 44622  
(330) 343-5343  
FAX (330) 343-5343

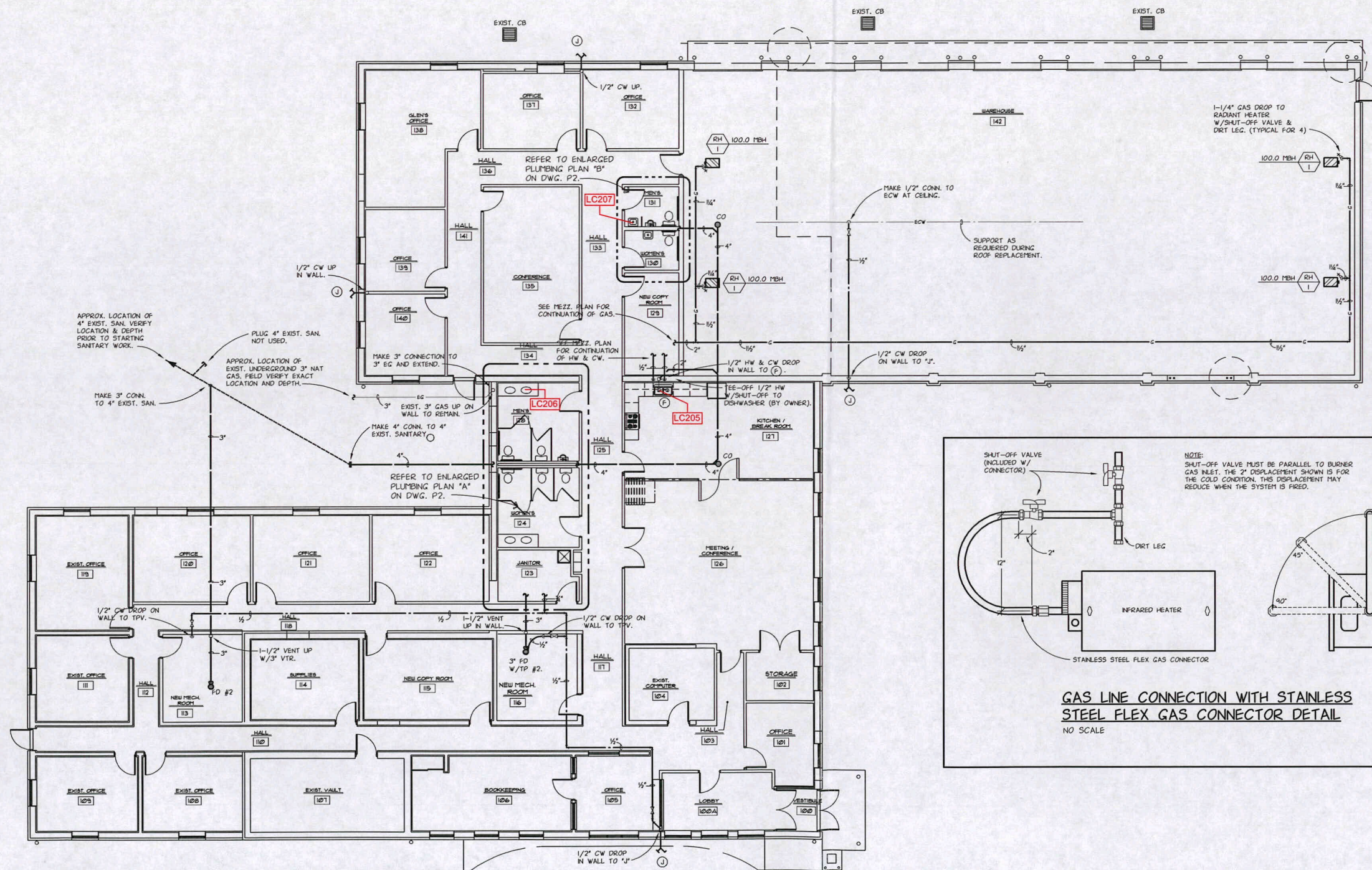


### NEW GAS DEMAND

FUTURE MAKE-UP AIR UNIT (MAU-1) . . . . .	250.0 CFH
RADIANT HEATER (RH-1) 4 @ 100.0 CFH EACH . . .	400.0 CFH
<hr/>	
TOTAL	650.0 CFH

NOTE:  
GAS PRESSURE AFTER METER SHALL BE 7" WC.

PLUMBING LEGEND	
SYMBOL	DESCRIPTION
----	COLD WATER PIPING
----	HOT WATER PIPING
140	140°F HOT WATER PIPING
----	HOT WATER RETURN PIPING
----	SANITARY SEWER (ABOVE GRADE)
----	SANITARY SEWER (BELOW GRADE)
SAN	SANITARY SEWER (EXTERIOR)
 FD	FLOOR DRAIN
 CO	FLOOR CLEANOUT
 CO	HORIZONTAL CLEANOUT
----	SANITARY VENT PIPING
 RD	ROOF DRAIN
G	GAS PIPING—LOW PRESSURE
]	CAP ON END OF PIPE
	SHUT-OFF VALVE
	CHECK VALVE
	SHUT-OFF VALVE IN RISER
	GAS SHUT-OFF VALVE
	RISER DOWN (ELBOW)
	RISER UP (ELBOW)
	BRANCH-TOP CONNECTION
	TEE
	ELBOW
TP	TRAP PRIMER
(A)	FIXTURE SYMBOL
EG	EXISTING GAS
ECW	EXISTING COLD WATER
PC	PLUMBING CONTRACTOR
SC	SITE CONTRACTOR
GC	GENERAL CONTRACTOR
EC	ELECTRICAL CONTRACTOR
MC	MECHANICAL CONTRACTOR
A.F.F.	ABOVE FINISHED FLOOR
IE	INVERT ELEVATION
	CONNECT TO EXISTING



### GAS LINE CONNECTION WITH STAINLESS STEEL FLEX GAS CONNECTOR DETAIL

NO SCALE

NOTE:  
SHUT-OFF VALVE MUST BE PARALLEL TO BURNER GAS INLET. THE 2" DISPLACEMENT SHOWN IS FOR THE COLD CONDITION. THIS DISPLACEMENT MAY REDUCE WHEN THE SYSTEM IS FIRED.

SEE ARCHITECTURAL DETAILS FOR EXACT LOCATIONS AND DIMENSIONS OF EQUIPMENT, FIXTURES, OPENINGS AND OUTLETS, COMMUNICATE WITH ARCHITECT ANY DISCREPANCIES.

B.A. Widder Architectural Services © Copyright 2007

Office Alterations For:

HOLMES WAYNE ELECTRIC CO-OP Inc.

6060 State Rt. 83 N., Millersburg, Ohio 44654

JOB NO.	
---------	--

07-1013

Start Date:	
-------------	--

1-3-07

Issue Date:

DRAWN BY: D.J.S.

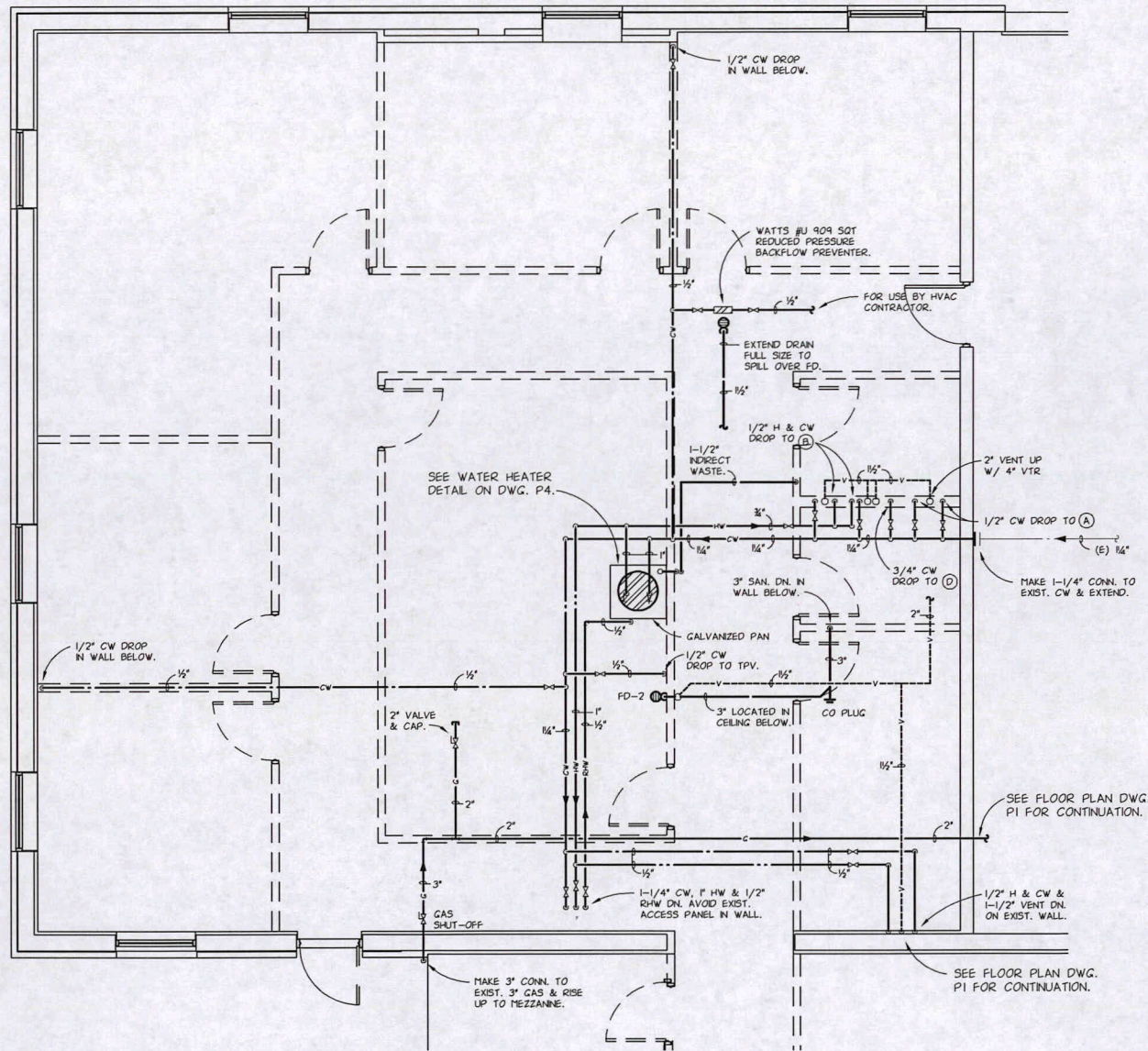
Plot Date: 7-18-07

P1 OF 4

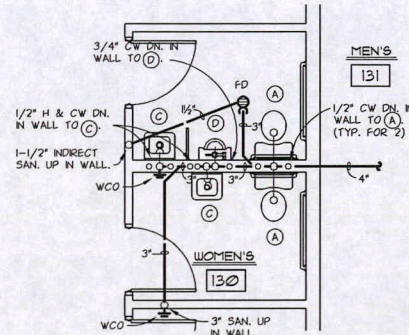
© 2004 Blackwell Publishing Ltd *Journal of Internal Medicine* 255: 111–118

[illegible]

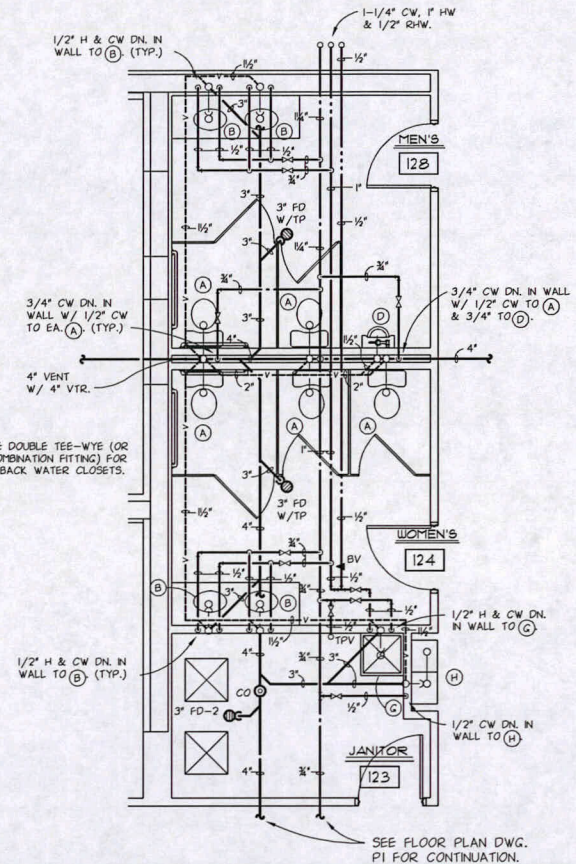




MEZZANINE PLUMBING PLAN  
SCALE: 1/4" = 1'-0"



ENLARGED  
PLUMBING PLAN "B"  
SCALE: 1/4" = 1'-0"



ENLARGED  
PLUMBING PLAN "A"  
SCALE: 1/4" = 1'-0"



PLUMBING FIXTURE SCHEDULE						
SYMBOL	DESCRIPTION	PIPING CONNECTIONS				MOUNT'G HEIGHT
		HW	CW	TRAP	WASTE	
A	AM. STD. #2377.100 " CADET ELONGATED, WHITE, VT CHINA SIPHON JET ACTION WC W/TANK COVER LOOKING DEVICE % WHITE OPEN FRONT SEAT LESS COVER W/SS CHECK HINGE (2) BOLT CAPS (SUPPLY W/KEYSTOP) CHROME FINISHES. CONTRACTOR TO SELECT FLUSH TANK TO LOCATE FLUSHING HANDLE ON WIDE SIDE OF STALL.	-	1/2"	INT	4"	FLOOR SET 16-1/2" ADA
B	A. STD. #0476.028 "AQUALYN" WHITE, VT CHINA COUNTER TOP SINK W/ 3 HOLE PUNCH ON 4" CENTERS FOR DELTA #520-HOF SINGLE LEVER LAVATORY FAUCET W/ METAL GRID STRAINER DRAIN, TAILPIECE OFFSET ADJ. "P" TRAP. SUPPLIES W/ KEY STOPS, CHROME FINISHES. TRU-BRO INSULATED COVERS ON SUPPLIES AND WASTE PIPES.	1/2"	1/2"	1-1/4"	1-1/2"	COUNTERTOP ADA
C	AM STD #0355.012 "LUCERNE", WHITE VT CHINA WALL HUNG LAVATORY W/CONCEALED ARMS AND 3 HOLE POUCHING ON 4" CENTERS FOR DELTA # 520 HOF SINGLE LEVER FAUCET W/METAL GOLD STRAINER DRAIN, OFFSET ADJ "P" TRAP SUPPLIES W/KEYSTOPS, CHROME FINISHES. TRU-BRO INSULATED COVERS ON SUPPLY AND WASTE PIPING. JR SMITH #0700-M31 CARRIER.	1/2"	1/2"	1-1/4"	1-1/2"	31" ADA
D	A. STD #0561.017 TRIMBROOK WHITE, VT CHINA, SIPHON JET URINAL W/SLOAN #186-1 FLUSH VALVE, CHROME FINISH & JR. SMITH CARRIER # 0615-M31 W/BEARING PLATE.	-	3/4"	INT	2"	17" TO LIP ADA
E	EXISTING FIXTURE TO REMAIN.	-	-	-	-	AS NOTED
F	JUST #DL-1933-B-G2 "STYLIST" DOUBLE BOWL TYPE 304, 2-EA, 18-8 STAINLESS STEEL SINK W/#J-35 DRAIN & TAIL PIECE IN LEFT BOWL. & ISE BADGER #5XP, 3/4 HP 120/60/1 DISPOSAL IN RIGHT HAND BOWL. 3 HOLE SINK PUNCHING ON 8" CENTERS FOR DELTA #350 W/ CHROME SINK FAUCET W/LEVER HANDLE. SUPPLIES W/KEY STOPS, CHROME FINISHES.	1/2"	1/2"	1-1/2"	1-1/2"	COUNTER ADA
G	MUSTEE #63M - MOP BASIL, 24"x24"x10" W/3" DRAIN & STRAINER. BUMPER GUARDS & SS WALL GUARDS. # 63.600A SERVICE SINK FAUCET W/WALLBRACE, VACUUM BREDKEN 3/4" HOSE THREAD SPOUNT & #65.700 HOSE & HOSE HOLDER.	1/2"	1/2"	3"	3"	FAUCET 36" AFF
H	OASIS #PBANSL, BARRIER FREE, SPLIT LEVEL ELEC. WATER COOLER, 120/60/1, SS TOP, CABINET FINISH SELECTED BY ARCH. JR SMITH CARRIER/ WALL MOUNTING BRACKET, SUPPLY W/STOP & ADJ "P" TRAP, CHROME FINISH.	-	1/2"	1-1/4"	1-1/2"	34 1/2" ORIFACE ON LOWER UNIT
J	JR SMITH #5609 QT, 1/2" NON FREEZE WALL HYDRANT W/INTEGRAL VACUUM BREAKER, 1/2" INLET AND 3/4" HOSE CONNECTION. LOOSE KEY HANDLE. BRONZE NICKEL PLOTED FINISH.	-	1/2"	-	-	24" ABOVE GRADE
R	EXIST. FIXTURE TO BE REMOVED. REMOVE EXIST DWV, HW & CW PIPING SERVING REMOVED FIXTURE. CAP OR PLUG SAN BELOW FLOOR AS FIELD CONDITIONS INDICATE. REMOVE ALL VENT PIPING. REMOVE ALL HW & CW PIPING.	-	-	-	-	-
TPV	P.P.P. #P.O.-500 OREGON #1, TRAP PRIMER VALVE. INSTALL PER MFOR INSTRUCT. PROVIDE BALL VALVE & UNION @ INLET & UNION @ OUTLET. INCLUDE DISTRIBUTION UNIT AS REQUIRED.	-	1/2"	-	-	15" AFF
FD	J.R. SMITH #2005-3" CAST IRON ROUND TOP FLOOR DRAIN W/ 6" DIA. NICKEL BRONZE ADJUSTABLE STRAINER. (SET FLUSH WITH FINISHED FLOOR). TRAP PRIMER TAPPING.	-	1/2" FROM TPV	3"	3"	FLUSH W/ FIN. FLR.
FD-2	J.R. SMITH #2350-Y 3" CAST IRON ROUND TOP FLOOR DRAIN W/ 8-1/2" ADJ. STRAINER HEAD & FLASHING COLLAR. SLOTTED SEDIMENT BUCKET & TRAP PRIMER VALVE CONN. NICKEL BRONZE TOP (FLUSH W/ FIN. FLR)	-	1/2" FROM TPV	3"	3"	FLUSH W/ FIN. FLR.

SEE ARCHITECTURAL DETAILS FOR EXACT LOCATIONS AND DIMENSIONS OF EQUIPMENT, FIXTURES, OPENINGS AND OUTLETS. COMMUNICATE WITH ARCHITECT ANY DISCREPANCIES.