



HECLA WATER ASSOCIATION, INC.

3190 State Route 141, Ironton, Ohio 45638

Phone: (740)533-0526

Fax: (740)533-0003

2017 MAR -1 AM 10:02

February 28, 2017

Ohio EPA
Southeast District Office
Attn: Lead map
2195 Front Street
Logan, Ohio 43138

Re: lead map with supporting documentation
Signed verification form

PWSID: OH4401612

Dear Sir:

Enclosed is the lead map and documentation for the Hecla Water association. If you have any questions or require additional information then please contact the Hecla Water Association.

Sincerely,

Tim Dalton, engr. Dept. Hecla Water Association, Inc.

2017 MAR -1 AM 10:02

**VERIFICATION FORM FOR COMMUNITY PUBLIC WATER SYSTEMS
CLAIMING NO LEAD SERVICE LINES**

The owner or operator of all community public water systems must identify and map areas of their distribution system that are known or are likely to contain lead service lines. Systems must submit a copy of the applicable map to the Ohio Department of Health and the Ohio Department of Job and Family Services. Systems must also submit a report to the director containing at least both of the following: (1) The applicable map with narrative, and (2) A list of sampling locations used to collect samples as required by Ohio Revised Code (ORC) Section 6109.121 and any rules adopted thereunder, including contact information for the owner and occupant of each sampling site.

Should a water system determine no lead service lines exist in their distribution system, they must provide information stating they reviewed, at the minimum, historical permit records and local ordinances, distribution maintenance records and information pertaining to installation dates or materials for all services lines. This information must be verified below.

I HEREBY CERTIFY THAT THE FOLLOWING METHOD(S) WERE USED TO DETERMINE NO LEAD SERVICE LINES EXIST IN THIS WATER SYSTEM'S DISTRIBUTION SYSTEM, AS REQUIRED BY ORC 6109.121(F):

LEAD SERVICE LINE VERIFICATION

This PWS states they have no lead service lines and has reviewed the following information (select one or more of the following):

- ☐ Historical permit records and/or local ordinances
- ☒ Distribution maintenance records (i.e. meter replacement, waterline break repairs)
- ☒ Information pertaining to installation dates for all service lines (i.e. after 1986 when lead services lines were banned)
- ☒ Service line material of all service lines is known (i.e. all service lines are known to be PVC)

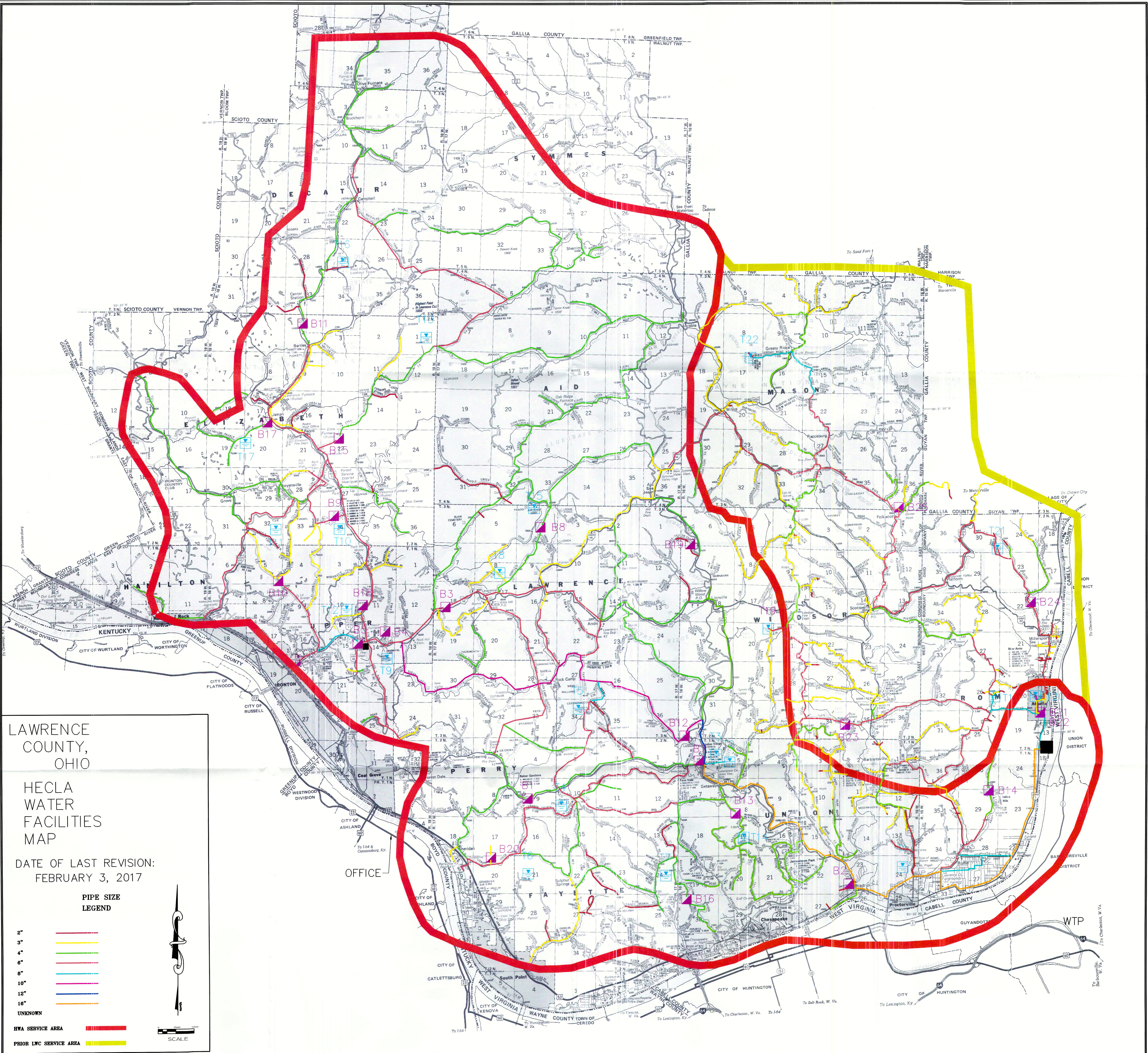
 2-28-17
Signature of Responsible Person Date

Tony Howard
Printed Name and Title of Responsible Person

PWS NAME: Hecla Water Assoc.
PWS ID: OH 4401612
COUNTY: Lawrence

For Ohio EPA use only:

Date Verification Rec'd: _____



LAWRENCE COUNTY, OHIO

HECLA WATER FACILITIES MAP

DATE OF LAST REVISION: FEBRUARY 3, 2017

PIPE SIZE LEGEND

2"	Red line
3"	Yellow line
4"	Green line
6"	Blue line
8"	Cyan line
10"	Magenta line
12"	Dark blue line
16"	Orange line
UNKNOWN	Black line

HWA SERVICE AREA (Thick red outline)

Prior LWC SERVICE AREA (Yellow outline)

SCALE

January 25, 2017

The Hecla Water Association customers are at a very low risk of having lead service lines in rural Lawrence County Ohio (based on the following information):

Hecla Water Association was incorporated in 1969 to provide potable water service to rural Lawrence County Ohio. The first water lines and water service installations began in 1970. From inception to date the Hecla Water Association has only used two (2) types of service lines. The most common service line used is high density poly ethylene pipe (HDPE). Hecla Water also used some poly vinyl chloride (PVC) service line material.

Hecla Water is not aware of any local organization (public or private) past or present which would issue plumbing permits, perform inspections or specify plumbing materials required for a residential construction in rural Lawrence County Ohio.

In November 1991 the Hecla Water Association mailed out a newsletter which contained a survey to all of our customers. The survey contained questions about their plumbing and the age of their residence along with other information in advance of the initial lead and copper testing requirement. The survey was used to select the sampling sites for the lead and copper testing. The completed and returned surveys did not indicate the presence of any lead service lines.

From 1970 until January 1, 2003 the Hecla Water Association offered (at a price) to new water service installations the option of installing the HDPE service line up to the foundation of the residence or the customer could purchase the HDPE service line from Hecla Water and the customer could install the service line themselves. Hecla Water did not keep individual records of which customers utilized these options but a large majority of Hecla Water customers did utilize one of these two options. January 1, 2003 the Hecla Water Association went to the local hardware stores and gave them a list of material and catalog cut sheets so the local hardware stores could carry the same material used by Hecla Water. Hecla Water then directed our customers to the Hardware stores to purchase their materials for their service lines. Hecla Water also stopped installing service lines from the water meter to the residence due to the increased work load that this service created on the Hecla Water installation crews. Hecla Water would provide new customers with the names of local plumbers and small local contractors that could perform this type of installation.

The Hecla Water Association has no records of any lead service lines anywhere on the Hecla Water system. This comment is supported by the following records of service line leak repairs by the Hecla Water Association crews.

2016	379 service line leak repairs.
2015	320 service line leak repairs.
2014	229 service line leak repairs.
2013	226 service line leak repairs.
2012	247 service line leak repairs.
2011	191 service line leak repairs.
2010	173 service line leak repairs.
2009	176 service line leak repairs.
2008	205 service line leak repairs.
2007	297 service line leak repairs.
2006	297 service line leak repairs.

While many of the above service line leak repairs were on the service lines maintained by Hecla Water there were many leaks that were found at the transition connection between the Hecla Water service line and the customers service line. The overwhelming majority of time the customers service line was HDPE pipe but some PVC pipe was used by the customer and occasionally the customer used copper pipe for their service line.

Hecla Water single family residence service connections (5/8-3/4 meters) as of December 31, 2016: 13,495. Meter setting consists of a copper and brass meter setter with 4 solder joints.

Hecla Water service connections using 1" meters as of December 31, 2016: 21. Meter setting consists of a copper and brass meter setter with 4 solder joints.

Hecla Water service connections using 2" meters as of December 31, 2016: 75. Meter setting consists of a copper and brass meter setter with 4 solder joints.

Hecla Water service connections using 3" meters as of December 31, 2016: 3. Meter setting constructed using PVC and/or steel pipe.

Hecla Water service connections using 4" meters as of December 31, 2016: 6. Meter setting constructed using PVC, steel pipe or ductile iron pipe.

Hecla Water service connections using 6" meters as of December 31, 2016: 1. Meter setting constructed using PVC, steel pipe or ductile iron pipe.

Hecla Water does provide water service to three public school districts.

Iron Rock Hill local Schools (2 new buildings built in 1999 and 1 existing building remodeled including completely new water service connections), Proctorville Fairland Local Schools (1 new building built in 2001 and 3 building re-models including completely new water service connections) and Willow Wood Symmes Valley Local Schools (2 new buildings built in 1994 and 1 building completely remodeled including completely new water service connections).

Lawrence County Ohio Auditors web page under advanced search

The Hecla Water Association did a search for the current Hecla water coverage area using dates for the residence construction.

1900 - 1910	1,295 houses constructed
1911 - 1920	968 houses constructed
1921 - 1930	1,292 houses constructed
1931 - 1940	994 houses constructed
1941 - 1950	1,670 houses constructed
1951 - 1960	3,048 houses constructed
1961 - 1970	3,267 houses constructed
1971 - 1980	3,610 houses constructed
1981 - 1990	2,155 houses constructed
1991 - 2000	3,349 houses constructed
2001 - 2010	2,240 houses constructed
2011 - 2016	545 houses constructed

The Lawrence County Ohio's Auditors web page (<http://www.lawrencecountyauditor.org/>) contains an online interactive map (with various search parameters available including parcel numbers, addresses etc.) that will show property boundaries and structure diagrams but the map is not associated with the Hecla Water Association system. Hecla Water facilities are not present on the Auditors site map and the Auditors site map does not contain plumbing materials used in the structure.