

**Licking Valley Local School District  
1379 Licking Valley Rd. N.E.  
Newark, Ohio 43055**

**Rationale of Water Distribution System**

**Re: Licking County  
PWS ID OH4564812  
Licking Valley Elementary School PWS  
Non Transient Non Community Public Water System  
Ground Water**

**The Licking Valley Elementary School building and water plant were both constructed during 2006/2007. The potable water distribution system consist of lead-free materials and fixtures.**

**The district has been collecting lead and copper samples from the day that we occupied the new elementary building. At the onset of moving into the building we were required to collect twenty samples from various locations throughout the building to determine the level (if any) of lead and copper within the distribution system. The samples were sent to a certified lab for testing and determined to be below the standard. This process continued for the first four years that the building was in service. Once the system was deemed safe from lead and copper, we were scheduled triennially on lead and copper samples. Our most recent triennial samples were collected (2014) at our elementary location and were less than 5 ug/L (parts per billion). The action level (unsafe) for lead is 15 ug/L (ppb).**

**This document includes interior, exterior water line mapping and color coded sampling locations for lead and copper.**

**Thank you,**

**Jack Shinn  
Custodial/Maintenance Supervisor  
Licking Valley Local School District  
1379 Licking Valley Rd. N.E.  
Newark, Ohio 43055**

Licking Valley Local School District  
1379 Licking Valley Rd. N.E.  
Newark, Ohio 43055

**Officials/Operators**

Re: Licking County  
PWS ID OH4564812  
Licking Valley Elementary School PWS  
Non Transient Non Community Public Water System  
Ground Water

**1. Owner/Management:**

*David Hile*  
*Superintendent*  
*1379 Licking Valley Rd. N.E.*  
*Newark, Ohio 43055*  
*740-763-3525*

**2. Owner/Management:**

*Jack Shinn II*  
*Supervisor*  
*1379 Licking Valley Rd. N.E.*  
*Newark, Ohio 43055*  
*740-763-3525*

**3. Operator:**

*Joe Hickman*  
*ORC. Ws4-1014587-96*  
*326 N. Granger St.*  
*Granville, Ohio 43023*  
*740-587-2348*



NORTH

ALPHA

ECHO

1510 Licking Valley Rd NE

BRAVO

CHARLIE

DELTA

Well # 2

Well # 1

Elementary  
Water Plant

Legend:

- Wells
- Water Lines From Wells To Plant
- Water Line To Building
- North Direction Line

© 2016 Google

Google Earth



Licking Valley Local School District  
1379 Licking Valley Dr. N.E.  
Newark, Ohio 43055

Re: Licking County  
PWS ID OH4564812  
Licking Valley Elementary School PWS  
Non Transient Non Community Public Water System  
Ground Water

**Lead and Copper Color Coded Sample Locations**

- K-1 Prep Sink - Intermediate Side of Kitchen (Dishwasher Area) 
- K-2 Hand Sink - Intermediate Side of Kitchen (Dishwasher Area) 
- K-3 Hand Sink - Intermediate Side Center of Kitchen (Right of Hood) 
- K-4 Prep Sink - Intermediate Side Center of Kitchen (Across From Hood) 
- K-5 Prep Sink - Intermediate Side Center of Kitchen (Across From K-4) 
- K-6 Hand Sink - Primary Side Center of Kitchen (Left of Hood) 
- K-7 Prep Sink - Primary Side Center of Kitchen (Near Exterior Entrance) 
- K-8 Three Bowl Sink - Primary Side of Kitchen (Dishwasher Area) 
- K-9 Hand Sink - Primary Side of Kitchen (Next to Three Bowl) 
- K-10 Prep Sink - Primary Side of Kitchen (Next to Hand Sink) 
- K-11 Kitchen Sink - Intermediate Side of Building (Admin Office Kitchen) 
- K-12 Kitchen Sink - Intermediate Side of Building (Staff Breakroom) 
- K-13 Kitchen Sink - Primary Side of Building (Admin Office Kitchen) 
- STR-1 Lavatory Sink - Kitchen Restroom (Located in Kitchen) 
- STR-2 Lavatory Sink - Intermediate Side of Building (Admin Restroom) 
- STR-3 Lavatory Sink - Intermediate Side of Building (Staff Restroom) 
- STR-4 Lavatory Sink - Primary Side of Building (Clinic Restroom) 
- D-1 Water Cooler - Intermediate Side of Building (South Corridor Near Restrooms) 
- D-2 Water Cooler - Intermediate Side of Building (North Corridor Near Gym and Restrooms) 
- D-3 Water Cooler - Primary Side of Building (South Corridor Near Restrooms) 

# ELEMENTARY SCHOOL 1ST FLOOR

## Legend:

Zoom to view map:

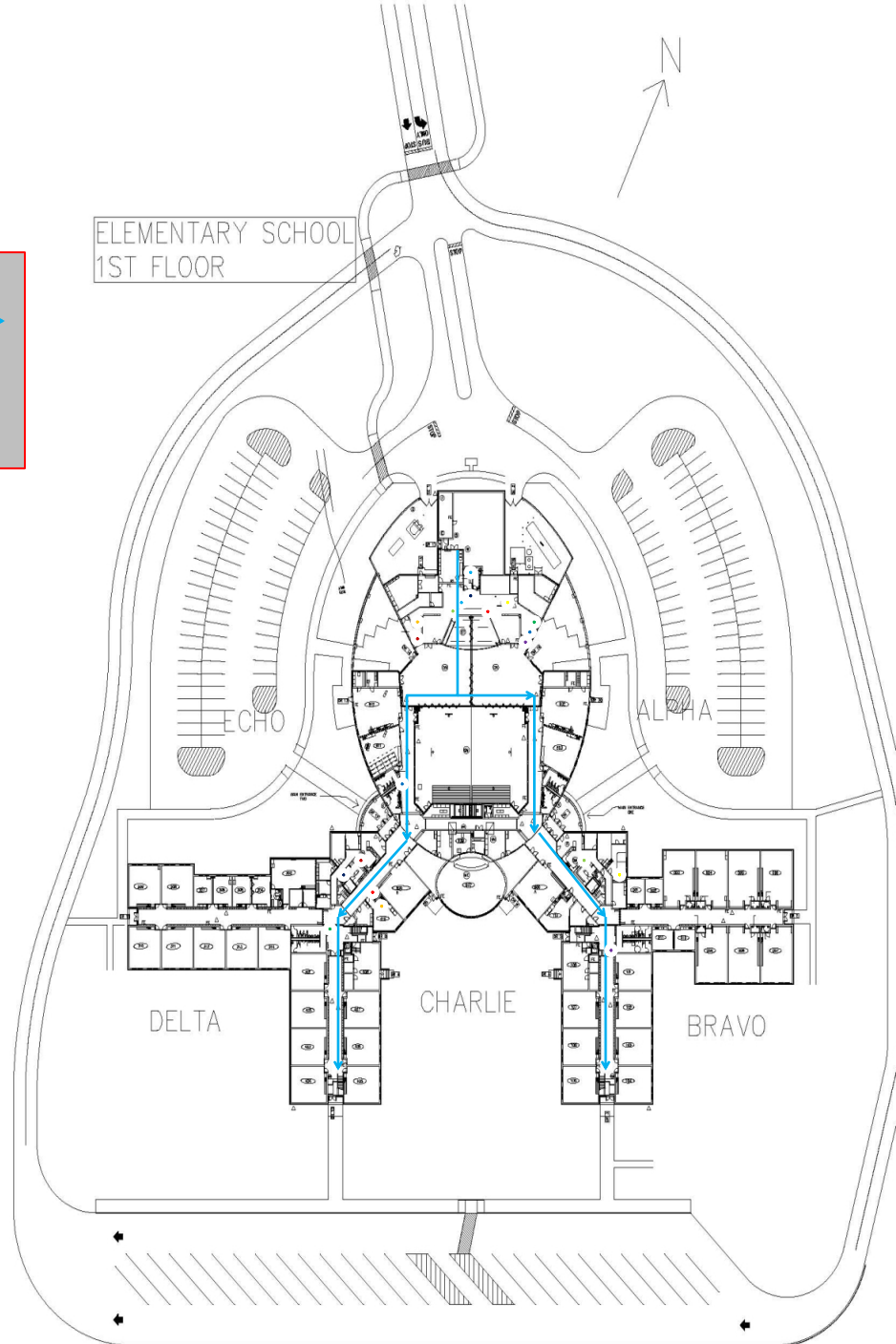
Interior Water Lines:

Lead and Copper Sample Locations:

All Lead-Free Type L Copper Water Lines

Installed Within Building

95/5% Used On All Solder Joints



EMERGENCY LEGEND	
1	LOCATION OF EMERGENCY EXIT
2	EMERGENCY EXIT
3	EMERGENCY EXIT
4	EMERGENCY EXIT
5	EMERGENCY EXIT
6	EMERGENCY EXIT
7	EMERGENCY EXIT
8	EMERGENCY EXIT
9	EMERGENCY EXIT
10	EMERGENCY EXIT
11	EMERGENCY EXIT
12	EMERGENCY EXIT
13	EMERGENCY EXIT
14	EMERGENCY EXIT
15	EMERGENCY EXIT
16	EMERGENCY EXIT
17	EMERGENCY EXIT
18	EMERGENCY EXIT
19	EMERGENCY EXIT
20	EMERGENCY EXIT
21	EMERGENCY EXIT
22	EMERGENCY EXIT
23	EMERGENCY EXIT
24	EMERGENCY EXIT
25	EMERGENCY EXIT
26	EMERGENCY EXIT
27	EMERGENCY EXIT
28	EMERGENCY EXIT
29	EMERGENCY EXIT
30	EMERGENCY EXIT
31	EMERGENCY EXIT
32	EMERGENCY EXIT
33	EMERGENCY EXIT
34	EMERGENCY EXIT
35	EMERGENCY EXIT
36	EMERGENCY EXIT
37	EMERGENCY EXIT
38	EMERGENCY EXIT
39	EMERGENCY EXIT
40	EMERGENCY EXIT
41	EMERGENCY EXIT
42	EMERGENCY EXIT
43	EMERGENCY EXIT
44	EMERGENCY EXIT
45	EMERGENCY EXIT
46	EMERGENCY EXIT
47	EMERGENCY EXIT
48	EMERGENCY EXIT
49	EMERGENCY EXIT
50	EMERGENCY EXIT
51	EMERGENCY EXIT
52	EMERGENCY EXIT
53	EMERGENCY EXIT
54	EMERGENCY EXIT
55	EMERGENCY EXIT
56	EMERGENCY EXIT
57	EMERGENCY EXIT
58	EMERGENCY EXIT
59	EMERGENCY EXIT
60	EMERGENCY EXIT
61	EMERGENCY EXIT
62	EMERGENCY EXIT
63	EMERGENCY EXIT
64	EMERGENCY EXIT
65	EMERGENCY EXIT
66	EMERGENCY EXIT
67	EMERGENCY EXIT
68	EMERGENCY EXIT
69	EMERGENCY EXIT
70	EMERGENCY EXIT
71	EMERGENCY EXIT
72	EMERGENCY EXIT
73	EMERGENCY EXIT
74	EMERGENCY EXIT
75	EMERGENCY EXIT
76	EMERGENCY EXIT
77	EMERGENCY EXIT
78	EMERGENCY EXIT
79	EMERGENCY EXIT
80	EMERGENCY EXIT
81	EMERGENCY EXIT
82	EMERGENCY EXIT
83	EMERGENCY EXIT
84	EMERGENCY EXIT
85	EMERGENCY EXIT
86	EMERGENCY EXIT
87	EMERGENCY EXIT
88	EMERGENCY EXIT
89	EMERGENCY EXIT
90	EMERGENCY EXIT
91	EMERGENCY EXIT
92	EMERGENCY EXIT
93	EMERGENCY EXIT
94	EMERGENCY EXIT
95	EMERGENCY EXIT
96	EMERGENCY EXIT
97	EMERGENCY EXIT
98	EMERGENCY EXIT
99	EMERGENCY EXIT
100	EMERGENCY EXIT