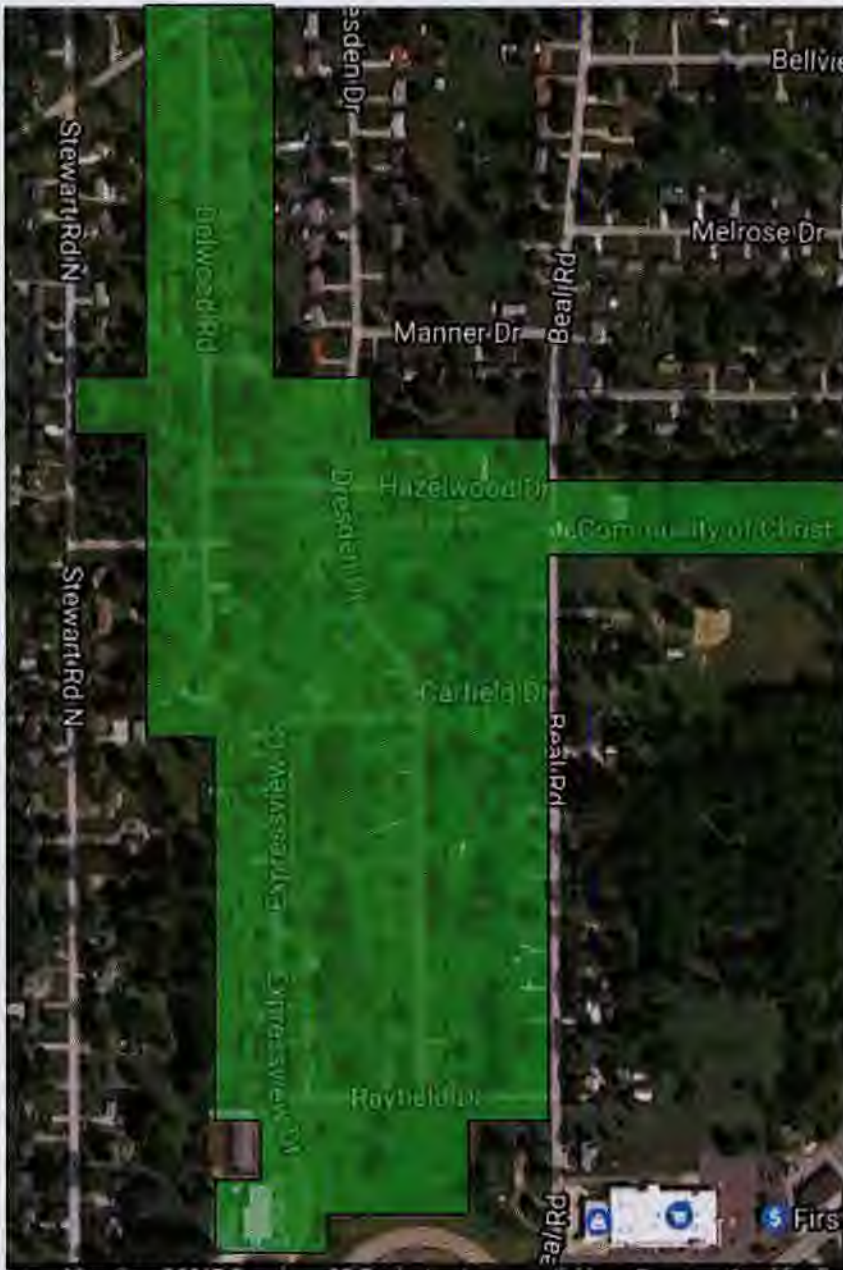


RE: Expressview Comm Water Association
Report
Drinking Water Program
Richland County
PWS ID: OH7001012



LEGEND

- LEAD
- NON-LEAD
- UNKNOWN

EXPRESSVIEW

SCALE : SEE BAR SCALE

NOTES:

1. ALL PIPING IN PWS IS MADE OF TRANSITE MAIN LINES & COPPER SERVICES LINES INSTALLED BETWEEN 1950 TO 1970.
2. THERE ARE NO LEAD SERVICE LINES OR MAINS.
3. ALL COPPER SERVICE LINES WERE INSTALLED BEFORE 1986.
4. DUE TO INTALLATION TIME FRAME, ALL OR MOST HOMES LIKELY CONTAIN LEAD SOLDER (WITHIN THE HOMES).
5. BUILDINGS IN OHIO BUILT PRIOR TO 1998 OR THAT USE PLUMBING MATERIAL OR SOLDER MANUFACTURED BEFORE 1998 MAY HAVE MATERIALS WITH GREATER THAN 8% LEAD AND ARE AT A HIGHER RISK OF CONTRIBUTING LEAD TO THE DRINKING WATER THAN MATERIALS MANUFACTURED AFTER 1998. IN ADDITION, BUILDINGS BUILT AND PLUMBING MATERIALS MANUFACTURED AFTER 2014 WERE REQUIRED TO HAVE LESS THAN 0.25% LEAD BY WEIGHT AND HAVE THE LOWEST RISK FOR CONTRIBUTING LEAD TO THE DRINKING WATER. IT SHOULD BE NOTED HOWEVER THAT, ALTHOUGH PROHIBITED, SOME USE OF LEADED SOLDER OR LEADED COMPONENTS MAY HAVE OCCURRED AFTER THE PROHIBITIONS BECAME EFFECTIVE.

EXPRESSVIEW WATER COMPANY
 1189 HAZELWOOD DR
 MANSFIELD, OHIO 44905
 PHONE # (419) 589-47716
 PWS ID # OH7001012



NORTH



RECEIVED

MAR 01 2017

DDAGW - NWDO