

RE: River of Life Worship Center  
Report  
Drinking Water Program  
Williams County  
PWS ID: OH8639512

River of Life  
OH 8639512

RECEIVED

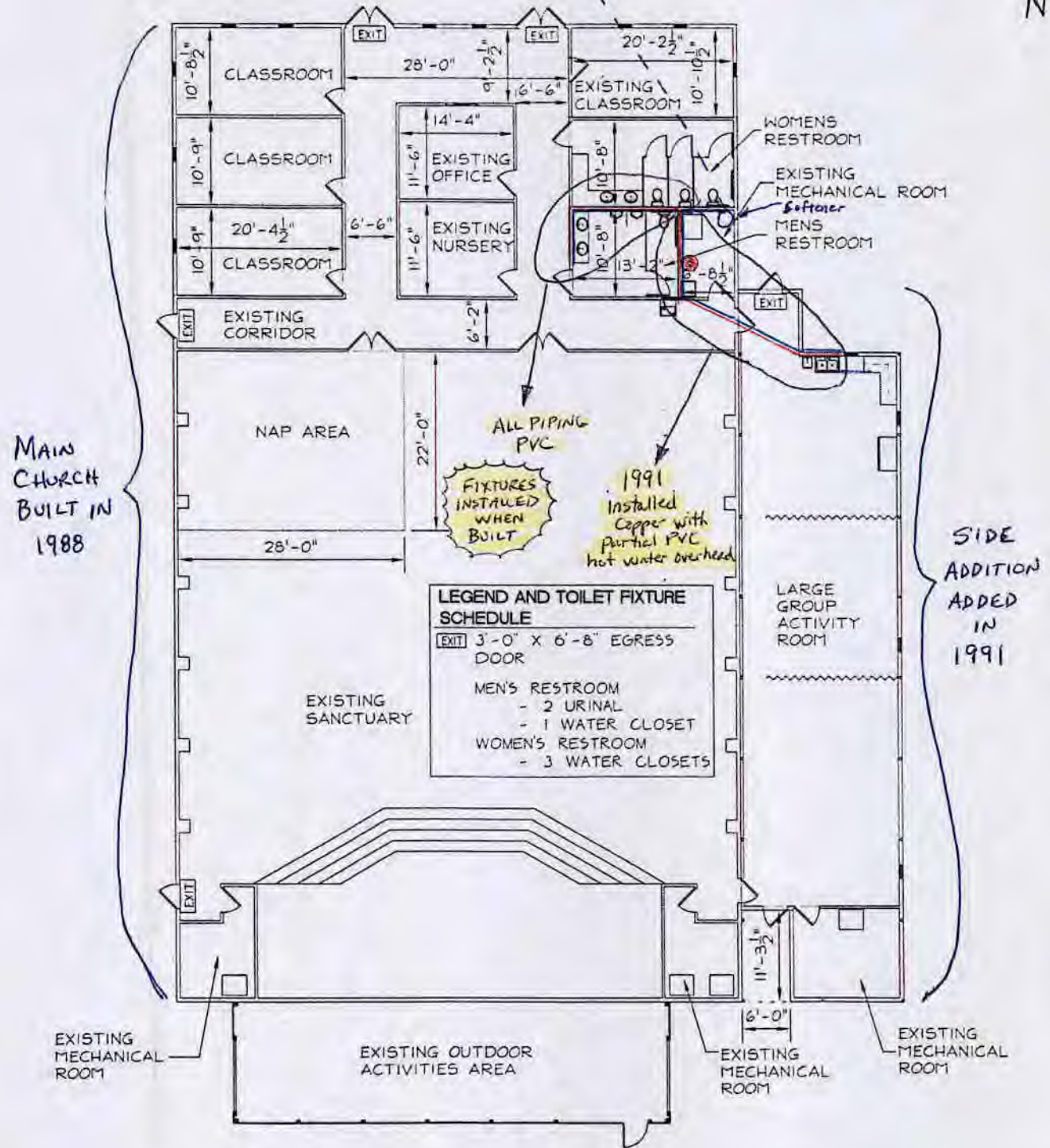
MAR 02 2017

DDAGW - NWDO

N

ALL FINISH MATERIALS ARE EXISTING & TO REMAIN AS IS

Well (supply - PVC tubing)



MAIN CHURCH BUILT IN 1988

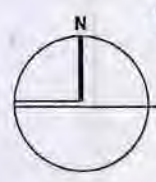
SIDE ADDITION ADDED IN 1991

RIVER OF LIFE WORSHIP CENTER

FLOOR PLAN

SCALE : NTS

PWS: OH8639512



Hot water  
cold water