

RE: Rainbow Promise Childcare
Report
Drinking Water Program
Defiance County
PWS ID: OH2035412

ANY INTERFERING UTILITIES SHALL BE MAINTAINED OR RELOCATED BY THE CONTRACTOR. THE CONTRACTOR SHALL BE RESPONSIBLE FOR VERIFYING THE LOCATION AND DEPTH OF ALL UTILITIES PRIOR TO CONSTRUCTION. THE CONTRACTOR SHALL BE RESPONSIBLE FOR OBTAINING ALL NECESSARY PERMITS AND APPROVALS FROM THE CITY OF DEFAANCE AND THE OHIO E.P.A. PRIOR TO CONSTRUCTION. THE CONTRACTOR SHALL BE RESPONSIBLE FOR PROTECTING ALL UTILITIES AND STRUCTURES TO REMAIN. THE CONTRACTOR SHALL BE RESPONSIBLE FOR THE PROTECTION OF ALL UTILITIES AND STRUCTURES TO REMAIN. THE CONTRACTOR SHALL BE RESPONSIBLE FOR THE PROTECTION OF ALL UTILITIES AND STRUCTURES TO REMAIN.

NOTE: SERVICES SHOWN ARE FOR ISSUES REPORTED BY THE CONTRACTOR. THE CONTRACTOR SHALL BE RESPONSIBLE FOR VERIFYING THE LOCATION AND DEPTH OF ALL UTILITIES PRIOR TO CONSTRUCTION. THE CONTRACTOR SHALL BE RESPONSIBLE FOR OBTAINING ALL NECESSARY PERMITS AND APPROVALS FROM THE CITY OF DEFAANCE AND THE OHIO E.P.A. PRIOR TO CONSTRUCTION. THE CONTRACTOR SHALL BE RESPONSIBLE FOR PROTECTING ALL UTILITIES AND STRUCTURES TO REMAIN. THE CONTRACTOR SHALL BE RESPONSIBLE FOR THE PROTECTION OF ALL UTILITIES AND STRUCTURES TO REMAIN.

NOTE: IT IS THE CONTRACTOR'S RESPONSIBILITY TO SUPPORT AND PROTECT ALL UTILITIES EXPOSED DURING ANY DEMONSTRATION PERFORMED AS A RESULT OF THIS PROJECT.

NOTE: A MINIMUM OF TWO (2) FEET HORIZONTALLY AND ONE (1) FEET VERTICALLY FROM ANY SPRAWL SERVICE OR SERVICE LINE SHALL BE MAINTAINED UNLESS OTHERWISE APPROVED BY THE OHIO E.P.A. NO LEAD OF CONTACT WITH A SERVICE SHALL BE PERMITTED.

LANDSCAPING UTILITIES
 TWO WORKING DAYS BEFORE YOU DIG
 Call 1-800-367-2784 (Toll Free)
 OHIO UTILITIES PROTECTION SERVICE
 NON-MEMBERS MUST BE CALLED DIRECTLY



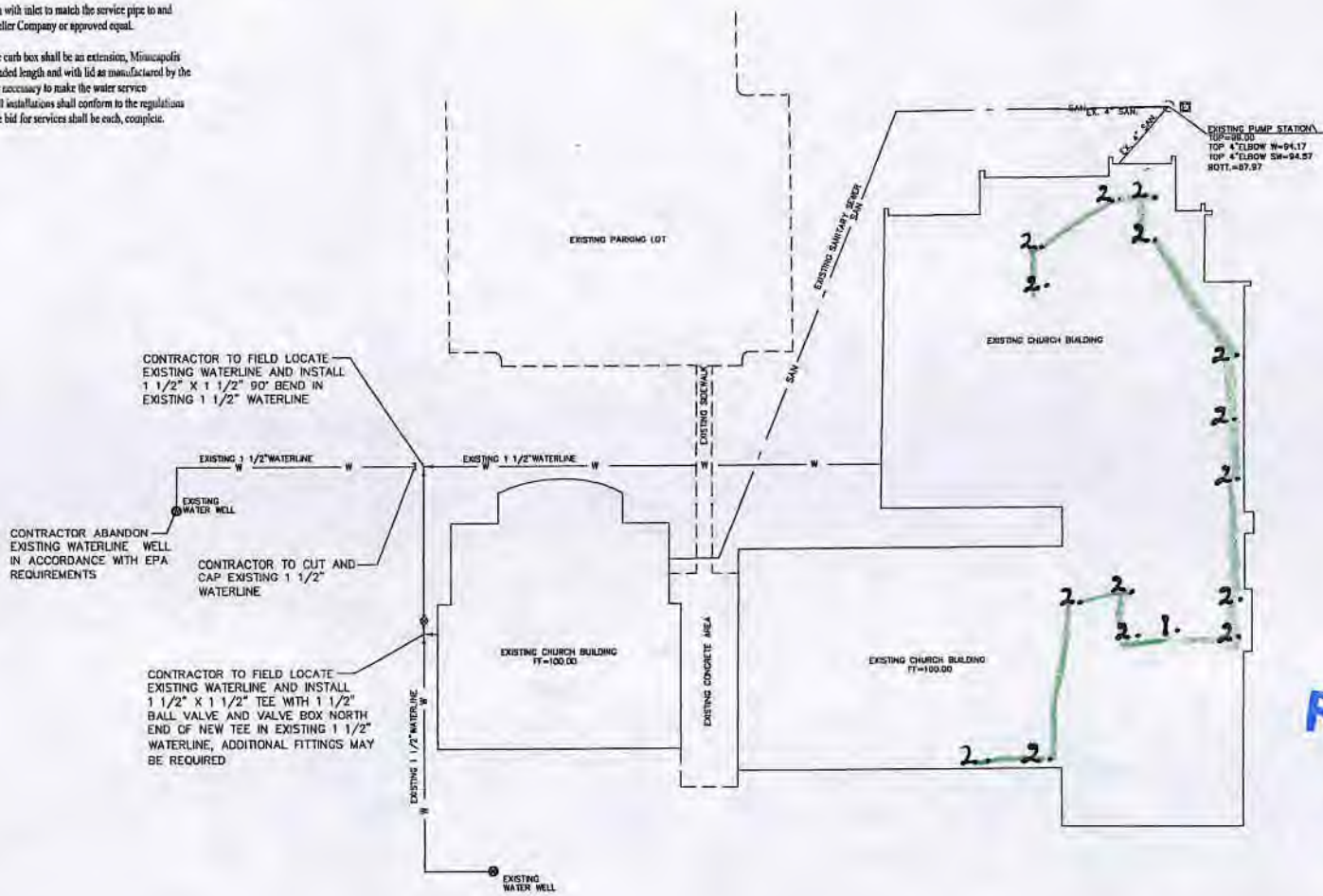
NOTES:

Service Lines
 Polyethylene tubing for water service pipe 1 1/2" diameter shall conform to AWWA C901, SDR 9, Pressure Class 200, Copper Tube Size (CTS) ASTM D2737. The polyethylene compound shall comply with the applicable requirements as specified in ASTM D3330 providing a cell classification of 345-14-C and simultaneously be as specified in ASTM D1248 for Type III, Category 5, Grade 34, Class C, PE 3408, very high molecular, high density PE plastic material. All services connected to ductile iron main line which is wrapped in polyethylene shall also be wrapped a minimum of 3' from the water main with the same material.

Curb Valves
 The 1 1/2" curb stops shall be Minneapolis pattern with inlet to match the service pipe and to copper tubing outlet as manufactured by the Mueller Company or approved equal.

Curb Box
 Each stop shall be provided with a curb box. The curb box shall be an extension, Minneapolis pattern base Model H-10300 minimum 54" extended length and with lid as manufactured by the Mueller Company. All other fittings or materials necessary to make the water service connections shall be included in the price bid. All installations shall conform to the regulations and policies of the City of Defiance and the price bid for services shall be each, complete.

N



RECEIVED
 MAR 02 2017
 OHIO E.P.A.
 N.W.D.O.

Rainbow Promise Child Care
 561 Carter Road
 Defiance, OH 43512
 419-782-0861
 PWDID- OH 2035412

1. entry point - CPVC
2. hot/cold fixtures installed after 2000-brass service lines CPVC

Non lead lines -

RECEIVED
 MAR 02 2017
 OHIO E.P.A.
 N.W.D.O.

POGGEMEYER DESIGN GROUP, INC.
 PLANNERS ARCHITECTS ENGINEERS
 1168 NORTH MAIN STREET
 DEFIANCE, OHIO 43402
 (419) 352-7537

WATERLINE IMPROVEMENTS FIRST CHURCH OF GOD DEFIANCE, OHIO

GENERAL PLAN

DATE: 03/01/17
 DRAWN BY: JLD
 CHECKED BY: JLD
 DATE: 03/01/17

JOB NUMBER: 2370-004