

Munroe Falls, Ohio

Public Water System Lead (Pb) Components

PWSID# OH7702703

Prepared February 2017

To comply with Section 6109.21 of the Ohio Revised Code, enacted in September 2016, the City of Munroe Falls in Summit County, Ohio has created the following report and attached map to identify known and potential components of water service lines that contain lead (Pb).

The following information and attached map do not verify the presence of lead in any of the plumbing components or structures shown. The information and map only show the probable or possible locations based on the year that structures were built, or by the year that the plumbing component was installed.

RCAP staff and the City of Munroe Falls Water Department met on February 1, 2017 to review a map of the service area. No applicable historical maintenance and operation records, tap cards, or as-builts were available to identify lead component locations. Locations where lead service components have been replaced, and locations where lead components are likely still being used, were identified by the City of Munroe Falls Water Department and recorded in a GIS database.

The digital maps provided depicts the parcels the public water serves, possible locations that may contain lead materials, and residential structure plumbing that may contain lead solder and flux based on structure construction date. It may be noted the City of Munroe Falls has not detected any lead service lines on the residential side of the water system during meter replacement projects. However, there is a low probability that some of the older infrastructure may or may not contain a lead service connection on the public water side of the distribution system.

Public and Private Ownership of Service Lines

The City of Munroe Falls Water Department distributes water to approximately 1880 parcels. The City owns and maintains service lines from the water distribution mains up to the curb stops for each water customer. The remainder of each service line from the curb stop to the building is the responsibility of the property owner. The public service lines identified as low probability is based on the age of the infrastructure.

The tables below provide information about the possibility of lead service line materials to the customers Munroe Falls serves. The age of the infrastructure, replacement projects, and pipe material determines which category it falls into.

Public Service Line Lead Probability		
Possibility of Lead	Public Lines #	% of System
Non Lead	1440	77%
Low Probability	440	23%

Private Service Line Lead Probability		
Possibility of Lead	Private #	% of System
Non-Lead	1880	100%

Distribution System

Within the distribution system, none of the pipes themselves are known to contain any lead, however, there may be joints, valves, and fittings within the system that may contain lead on some of the older mains.

From January 1 2015 through February 1 2017, the city replaced 1900 residential (private) meters. The old meters were replaced with engineered polymer meters that complies with lead free standards. All the meters in the city were replaced by the water department. There were no Lead services detected on the residential(private) side of lateral line. Meters installed after 2014 will have less than 0.25% lead.

The City of Munroe Falls has approximately 28.3 miles of water main lines. The water system implemented in the late 1950's. Mr. Bowery has work in the water department for approximately 30 years and has overseen the meter replacements.

Indoor Plumbing

Buildings in Ohio built prior to 1998 or that use plumbing material or solder manufactured before 1998 may have materials with greater than 8% lead and are at a higher risk of contributing lead to the drinking water than materials manufactured after 1998.

Buildings built and plumbing materials manufactured after 2014 were required to have less than 0.25% lead by weight and have the lowest risk for contributing lead to the drinking water. It should be noted however that, although prohibited, some use of leaded solder or leaded components may have occurred after the prohibitions became effective.

In Munroe Falls, according to the County structure data only 2 properties are known to have structures built since 2014, and therefore nearly all buildings in the village may have some lead in the solder or fixtures.

Customer Self-Reporting

The information on this map regarding privately owned service lines is based on the limited information from the water system staff and Summit County building and parcel data. Property owners are encouraged to inspect their own service lines entering the building if these are in anyway exposed, and notify the City of Munroe Falls Water Department if they have determined whether or not a lead service line exists. Please contact the Water Department by calling 330-805-6056 or sending an email to water@munroefalls.com. A representative from the water department will contact you to confirm and update this information for the next map release.

Contacts and Resources

If you have questions about known and potential lead components within the City of Munroe Falls Public Water System, please contact:

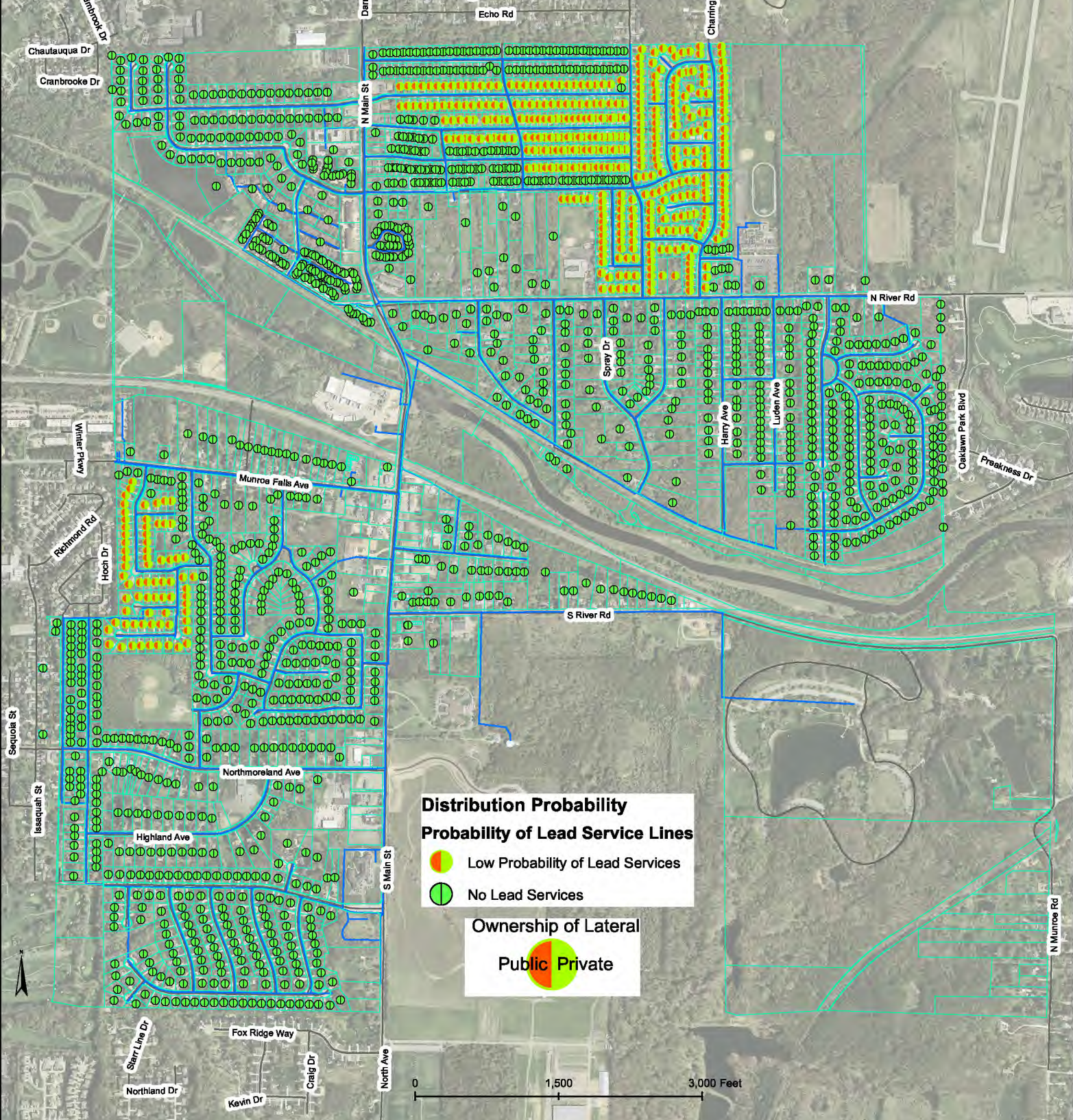
Jim Bowery
321 S River Road
Munroe Falls Ohio 44262

For more information about lead service lines and their removal, we recommend the following resources:

- **The Lead Service Line Replacement Collaborative**
<http://www.lslr-collaborative.org/resources-for-concerned-consumers.html>
- **Ohio EPA 'Learn About Lead' page**
<http://epa.ohio.gov/pic/lead.aspx>
- **US EPA Lead in Drinking Water Information Page**
<https://www.epa.gov/ground-water-and-drinking-water/basic-information-about-lead-drinking-water>

Munroe Falls Water Distribution PWS OH7702703

Probability of Lead Services



This map does not verify the presence of lead in any of the lines or structures shown. This map only shows the probable or possible locations based on the year that the structure was built, historical maintenance and operation records, and customer or utility staff verification. This map is not intended for design engineering, surveying, or construction purposes. Information and data contained or accessed within this map emanates from various public and private sources and may contain errors and omissions. This map remains under development and is subject to change with or without notice. All data, information and documentation within this map are provided "as is" without warranty of any kind, either expressed or implied. The suitability of the data and information contained in this map is not guaranteed, and the user assumes all risk for such uses. WSOS, Community Action and its employees, affiliates, agents and licensors cannot and do not warrant the accuracy, completeness, non-infringement, merchantability or fitness of any information contained within this map. Sources: OGRIP, Summit County Auditor, RCAP GIS. Datum/Projection: NAD 1983 Ohio State Plane North (ft) Date: 2/10/2017

Munroe Falls Water Distribution PWS OH7702703

Lead Solder and Flux Locations Based on Structure Age

