

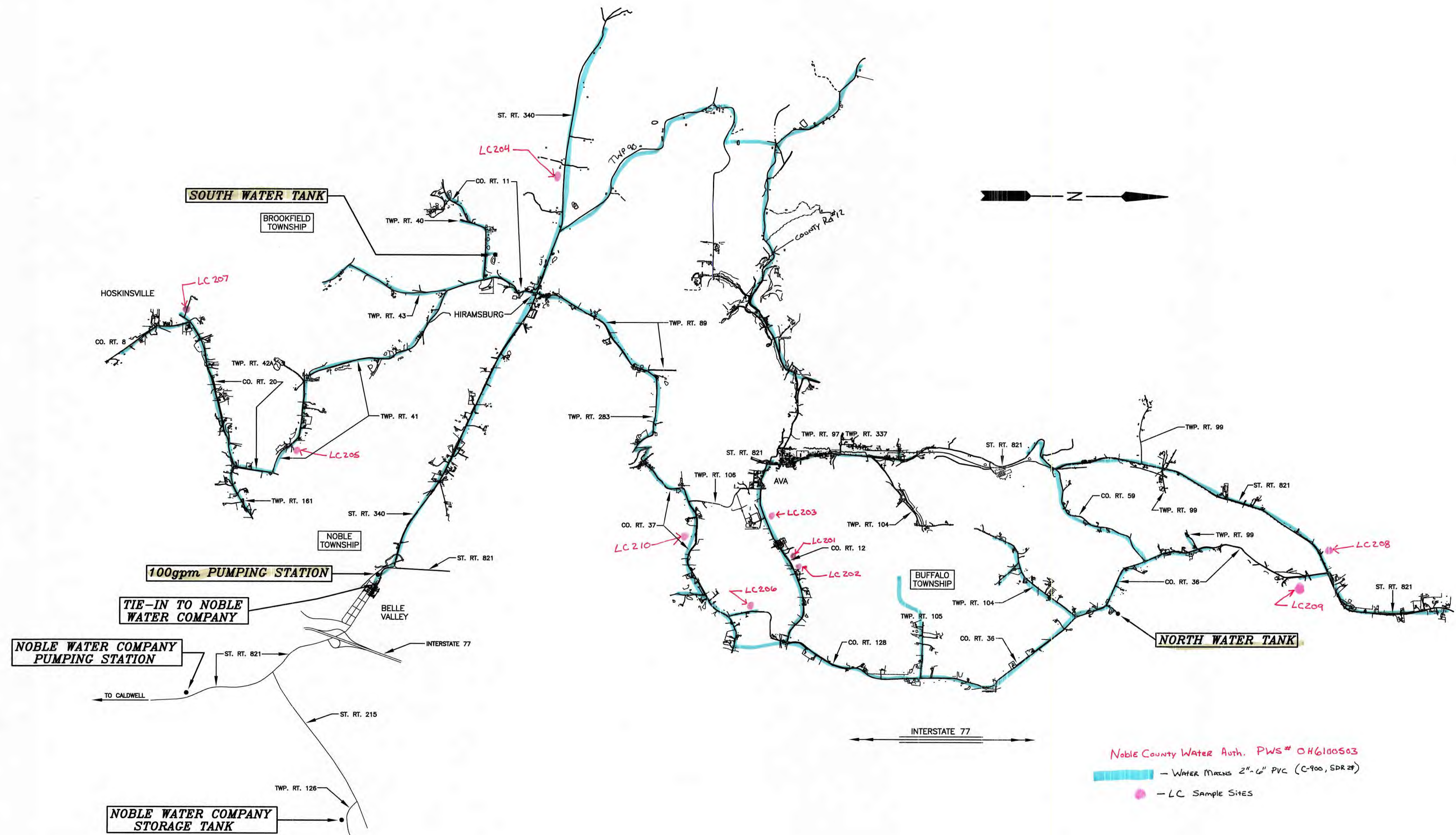
Noble County Water Auth.

PWS# OH6100503

Lead and copper 2017

Because it is practically impossible to determine the lead content of an installed fixture, fitting or pipe, it should be assumed that the manufacture or installation date is the primary indicator of the lead content. Therefore, the characteristics of buildings and piping solder or fixtures would be **buildings in Ohio built prior to 1998 or that use plumbing material or solder manufactured before 1998 may have materials with greater than 8% lead and are at a higher risk of contributing lead to the drinking water than materials manufactured after 1998. In addition, buildings built and plumbing materials manufactured after 2014 were required to have less than 0.25% lead by weight and have the lowest risk for contributing lead to the drinking water. It should be noted however that, although prohibited, some use of leaded solder or leaded components may have occurred after the prohibitions became effective**

In 2000 NCWA Installed Approximately 26 miles of waterline from the Belle Valley pump station to Hoskinsville, Hirambsburg, Ava, and north through Buffalo Township to the county line along State Route 821, providing a valuable resource to 300 homes in rural Noble County. All water mains range from 2" to 6" being made of PVC (sdr21, C900). All service lines from main to curb stops / meter pits were constructed using CST 200psi black plastic pipe. Home owners were required to run their own service line from curb stop / meter pit using CTS 200 psi black plastic pipe. Most homes were preexisting therefore in house plumbing is unknown at this time. It is estimated that approximately 75% of homes were built prior to 1998 and could contain lead fixtures / plumbing.



Noble County Water Auth. PWS# OH6100503
 - WATER MAINS 2\"/>

RECEIVED
 MAR 3 2017
 Ohio Environmental
 Protection Agency
 Southeast District

NO.	DATE	REVISION

DRAWN BY:
 MATT DALPIAZ
 CHECKED BY:
VAUGHN, COAST & VAUGHN, INC.
 Engineers
 St. Clairsville, Ohio 43950

NOBLE COUNTY WATER AUTHORITY
 PUBLIC WATER SYSTEM
 NOBLE COUNTY, OHIO

GENERAL
OVERALL INDEX MAP

SCALE:
 1"=2,000'
 DATE:
 JUNE 1997
 PROJECT NO.
 95013
 DRAWING NO.
 A

K:\Users\Projects\WDC02017\Water System Mapping for Lead Content\Public Water System\Index Map\Map.dwg, 2/10/2017 7:42:05 AM, HP DesignPlot 12000 PS HPGL2 MONO MICROPLT, L3000