

**VERIFICATION FORM FOR COMMUNITY PUBLIC WATER SYSTEMS
CLAIMING NO LEAD SERVICE LINES**

The owner or operator of all community public water systems must identify and map areas of their distribution system that are known or are likely to contain lead service lines. Systems must submit a copy of the applicable map to the Ohio Department of Health and the Ohio Department of Job and Family Services. Systems must also submit a report to the director containing at least both of the following: (1) The applicable map with narrative, and (2) A list of sampling locations used to collect samples as required by Ohio Revised Code (ORC) Section 6109.121 and any rules adopted thereunder, including contact information for the owner and occupant of each sampling site.

Should a water system determine no lead service lines exist in their distribution system, they must provide information stating they reviewed, at the minimum, historical permit records and local ordinances, distribution maintenance records and information pertaining to installation dates or materials for all services lines. This information must be verified below.

I HEREBY CERTIFY THAT THE FOLLOWING METHOD(S) WERE USED TO DETERMINE NO LEAD SERVICE LINES EXIST IN THIS WATER SYSTEM'S DISTRIBUTION SYSTEM, AS REQUIRED BY ORC 6109.121(F):

LEAD SERVICE LINE VERIFICATION
<p>This PWS states they have no lead service lines and has reviewed the following information (select one or more of the following):</p> <ul style="list-style-type: none"> <input type="checkbox"/> Historical permit records and/or local ordinances <input checked="" type="checkbox"/> Distribution maintenance records (i.e. meter replacement, waterline break repairs) <input checked="" type="checkbox"/> Information pertaining to installation dates for all service lines (i.e. after 1986 when lead services lines were banned) <input type="checkbox"/> Service line material of all service lines is known (i.e. all service lines are known to be PVC)

Steve Malone 3/1/17
 Signature of Responsible Person Date

Steve Malone / Water Operator
 Printed Name and Title of Responsible Person

PWS NAME: Village of South Point
PWS ID: OH 4401212
COUNTY: Lawrence

<p>For Ohio EPA use only:</p> <p>Date Verification Rec'd: _____</p>
--

Village of South Point

415 Solida Rd. South Point, Ohio 45680

Fax # 740-377-0043 Utilities # 740-377-2304

The village of South Point's water system most vulnerable exposure to Lead or Copper will be due to home owner's plumbing or copper service lines located on the PWS that may contain lead solder. The Village does not, currently or in the past, contain any lead service lines or lead main lines. The enclosed map is divided into the following categories:

- The GREEN dots with LC### are the Lead and Copper Monitoring sites. All are Tier 1 sites.
- The RED dots indicate homes with the Highest Risk due to the fact that they were built before 1998 and may contain materials with a Higher than 8% lead content.
- The BLUE dots indicate homes with a Moderate Risk due to the fact that they were built between 1998 and 2014 and may contain materials with no more than 8% lead.
- The YELLOW dots indicate homes with a Low Risk due to the fact that they were either built from 2014 to 2017 or have plastic

services and plastic homeowner plumbing.



Green = L/C Sampling sites

Red= Highest Risk

Blue= Moderate

Yellow= Least Risk

MAP #1



Green= L/C sampling sites

MAP #2

Red= Highest Risk

Blue= Moderate

Yellow = Least Risk



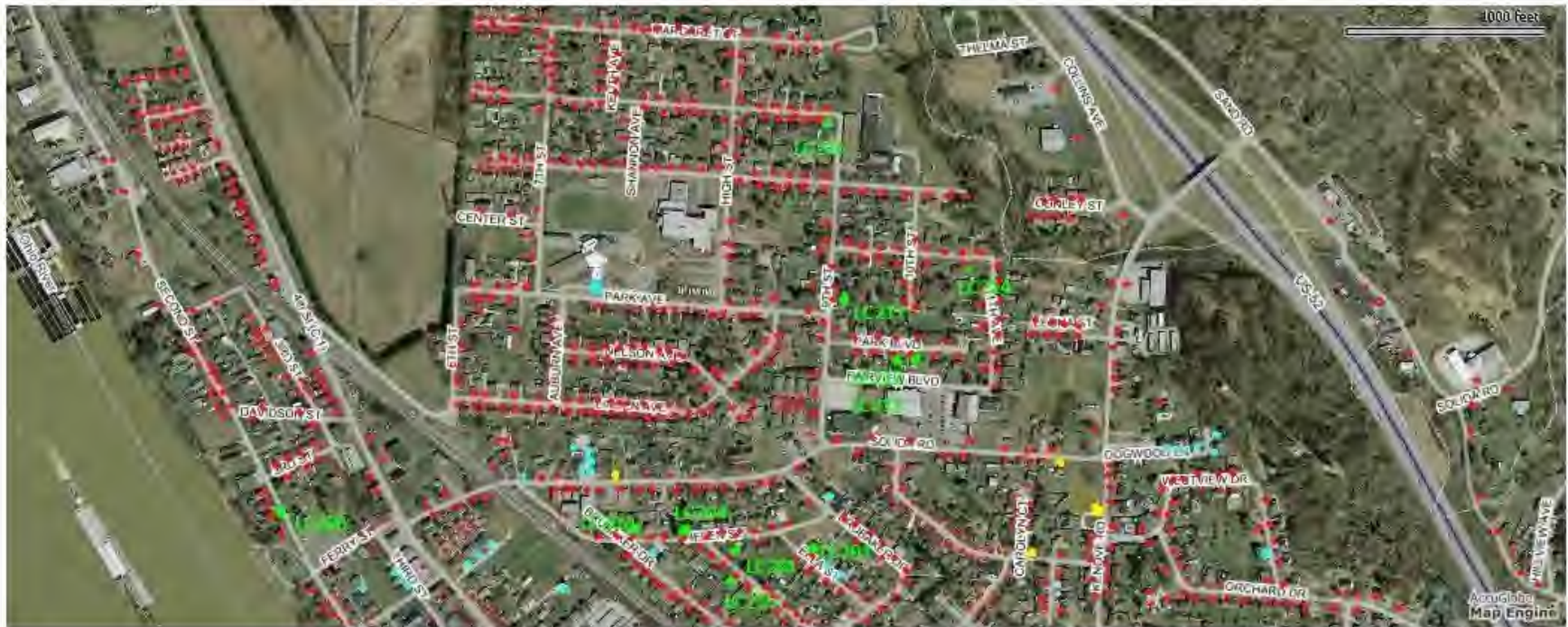
Green= L/C sampling site

Red= Most Likely

Blue= Moderate

Yellow= Least Likely

Map #3



Green= L/C Sampling Sites

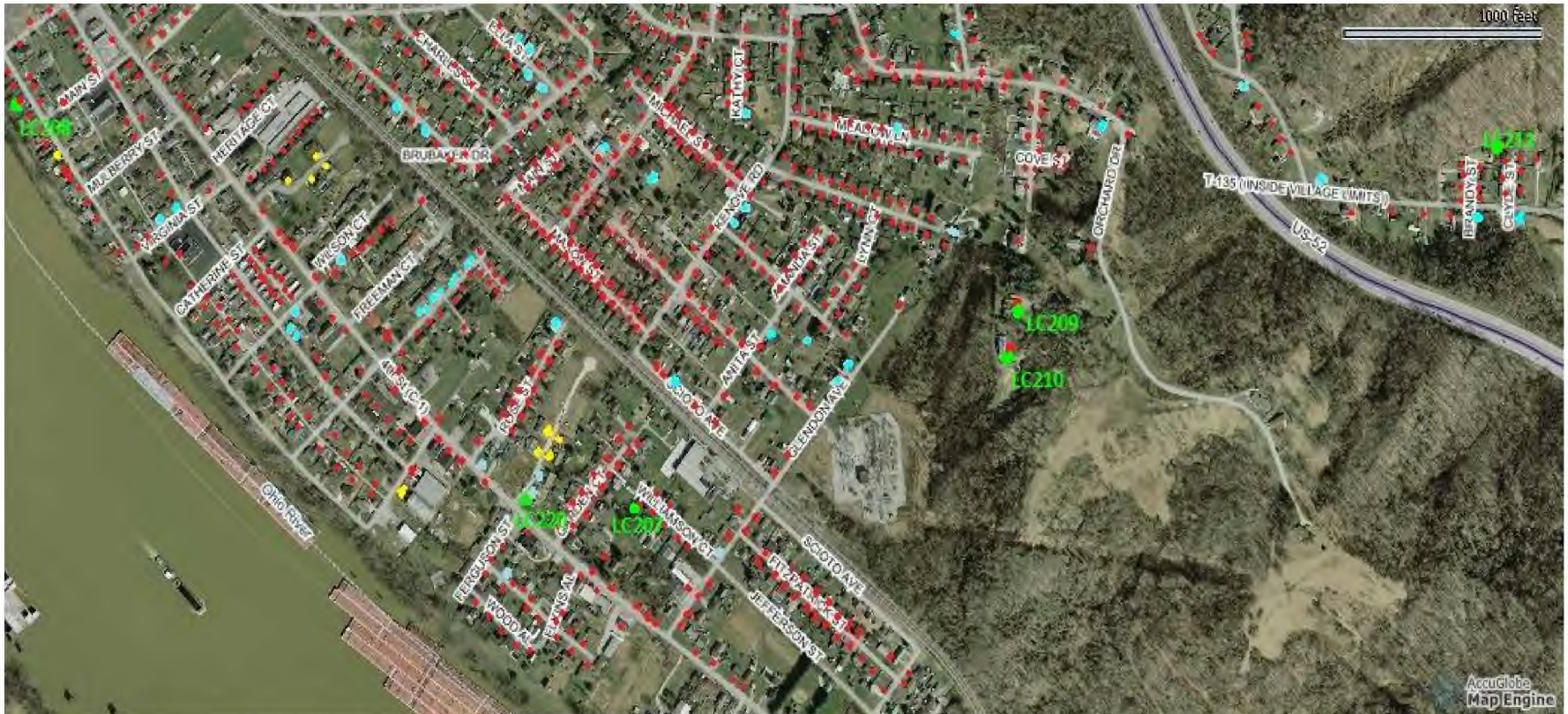
Red= Most Likely

Blue= Moderate

Yellow= Least Likely

MAP #4

Map #5



Green = Lead and copper sampling sites

Red = Most Likely (Copper plumbing before 1998)

Blue = Moderate (Copper plumbing from 1998 to 2014)

Yellow = Least Likely (2014 to 2017 Copper or plastic plumbing)

Map # 6



Green= Lead and copper sampling sites

Red= Most Likely (Copper plumbing before 1998)

Blue= Moderate (Copper plumbing from 1998 to 2014)

Yellow= Least Likely (2014 to 2017 Copper or plastic plumbing)

Map #7



Green = Lead and copper sampling sites

Red = Most likely (Copper plumbing before 1998)

Blue= Moderate (Copper plumbing from 1998 to 2014)

Yellow= Least Likely (2014 to 2017 Copper or plastic plumbing)

Map #8



Green= Lead and Copper sampling sites

Red= Most likely (Copper plumbing before 1998)

Blue = Moderate (Copper plumbing from 1998 to 2014)

Yellow = Least Likely (2014 to 2017 Copper or Plastic Plumbing)

Map #9



Green = Lead and Copper sampling sites

Red= Most likely (Copper plumbing before 1998)

Blue= Moderate (Copper plumbing from 1998 to 2014)

Yellow= Least likely (2014 to 2017 Copper or plastic plumbing)

