

Pb and Cu Narrative

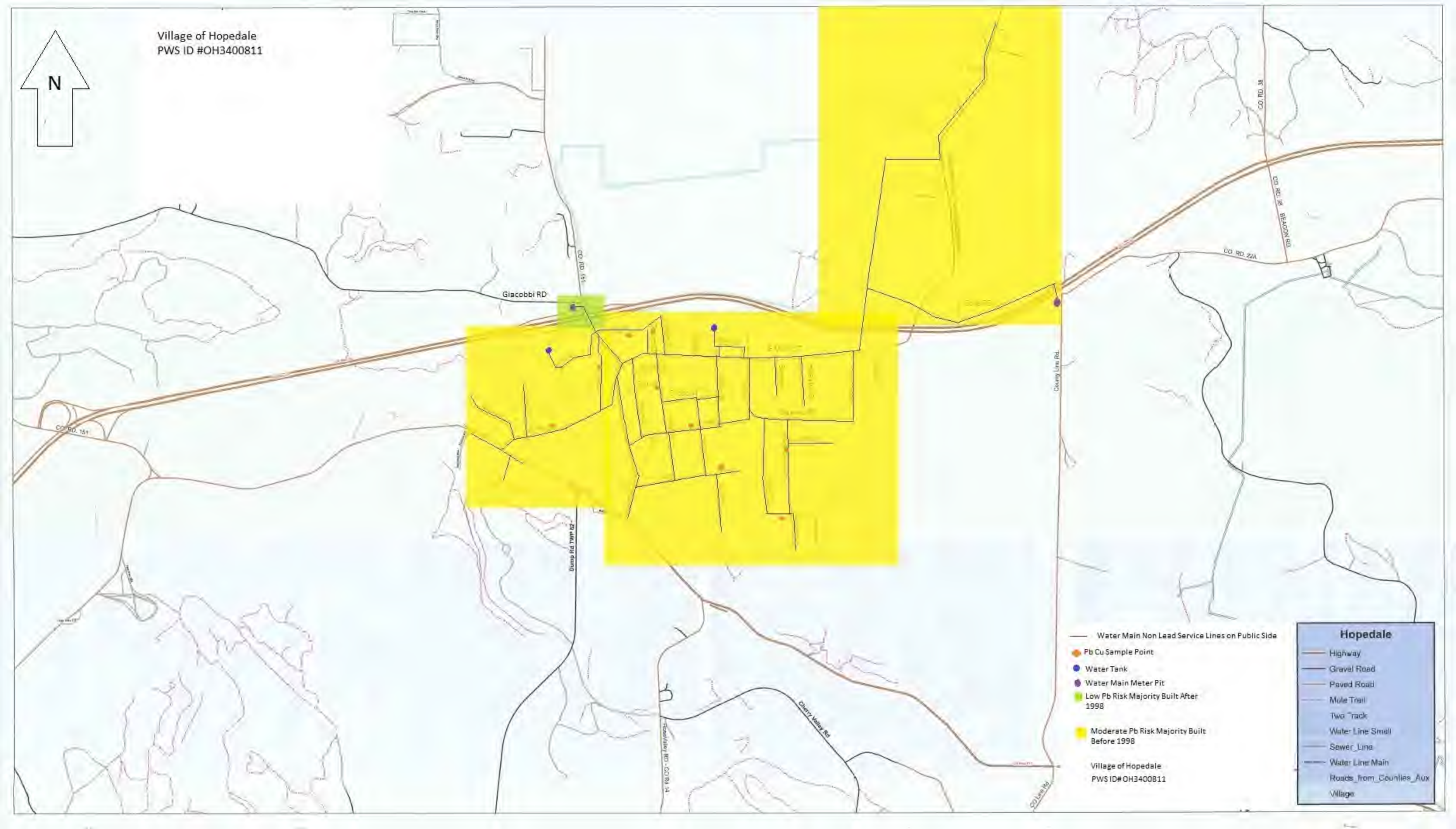
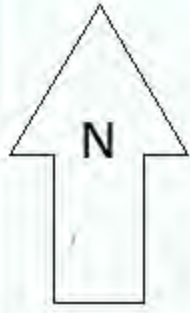
Village of Hopedale

PWS ID# OH3400811

From 2001 through 2008, all main water lines were replaced with HDPE or C-900 in the Village of Hopedale's distribution system. While replacing the main and reconnecting the service lines only one lead service line was found. The Public and Private side of this service line was replaced with CTS plastic.

Service lines run from the water main to the property line. The Public side is non lead. During meter changes and other maintenance activities, no lead service lines have been observed. All observed Private lines were either plastic or copper.

84% of residential and non-residential facilities which provides water for human consumption were built before 1987. 92% of residential and non-residential buildings were built before 1998.



- Water Main Non Lead Service Lines on Public Side
- Pb Cu Sample Point
- Water Tank
- Water Main Meter Pit
- Low Pb Risk Majority Built After 1998
- Moderate Pb Risk Majority Built Before 1998
- Village of Hopedale
PWS ID# OH3400811

Hopedale

- Highway
- Gravel Road
- Paved Road
- Mule Trail
- Two Track
- Water Line Small
- Sewer Line
- Water Line Main
- Roads_from_Counties_Aux
- Village