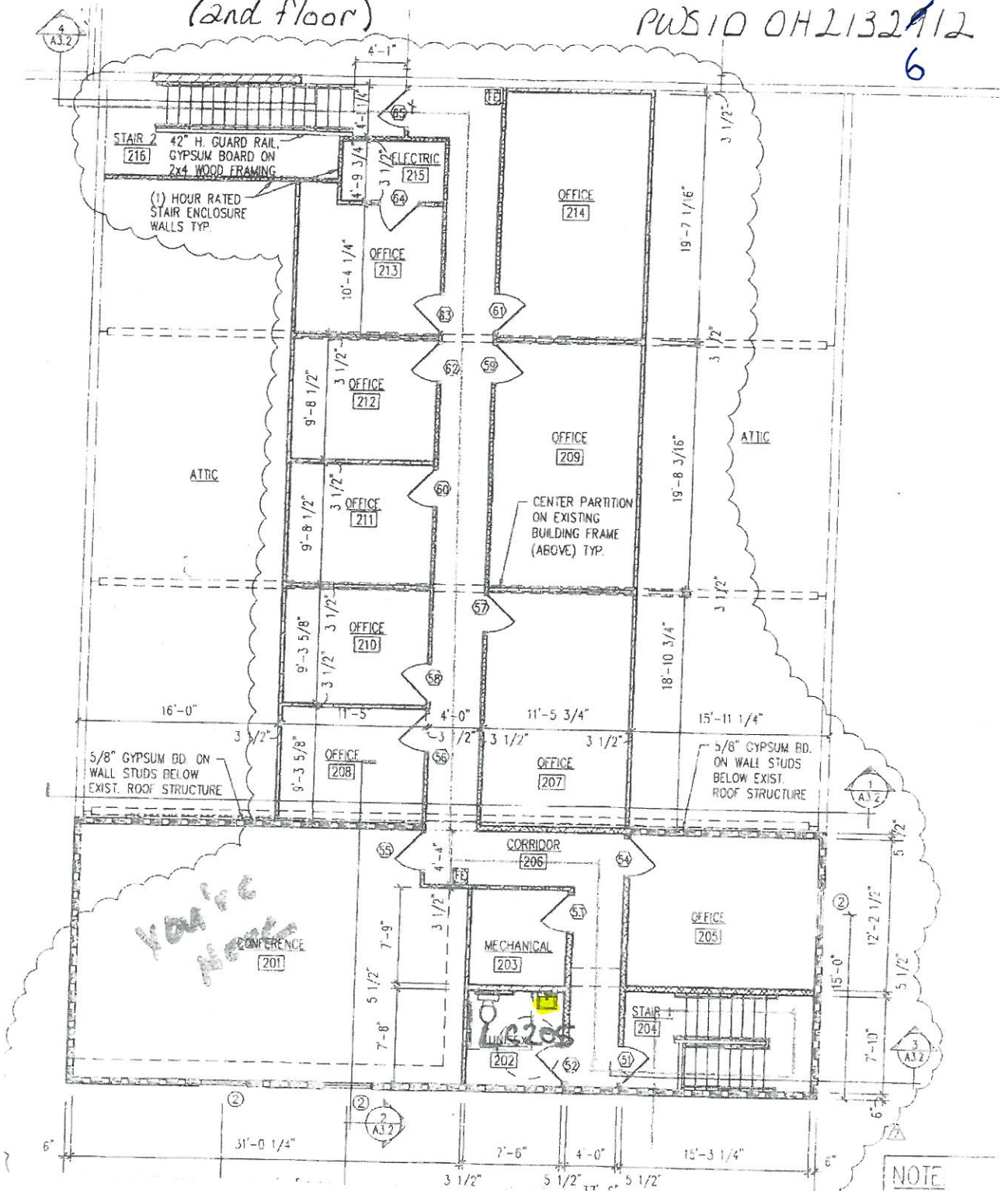


Holmes Lumber Co. (2nd floor)

PWS10 OH2132112

6



NOTE
SEE SHEET 1

The building was built in
 The service line is copper.
 Water lines are copper > 82.
 There are no lead lines in the building.
 Contact Lorri Olson 740.936.5077

REVO 2/22/2017

Holmes Lumber
PWS ID# OH2131612
For more information, please call
H2OTechnologies
740-389.4514

There are no known Holmes Lumber or
customer lead water service lines in this Public
Water System*

* The maps provided are based on historical data in available records, historical knowledge, and assumptions concerning the date of installation and in some cases, information acquired during physical inspections. H2O Tech does not guarantee the accuracy of these records and maps, which shall be used for the sole purpose of providing H2O Tech available data regarding company and privately owned lead water services, and not for any commercial or other use. These records will be updated as H2O Tech gathers additional information. H2O Tech reserves the right to alter or amend the display of these maps and records. Customers should take independent steps to verify whether their service lines are lead.

"Buildings in Ohio built prior to 1998 or that use plumbing material or solder manufactured before 1998 may have materials with greater than 8% lead and are at a higher risk of contributing lead to the drinking water than materials manufactured after 1998. In addition, buildings built and plumbing materials manufactured after 2014 were required to have less than 0.25% lead by weight and have the lowest risk for contributing lead to the drinking water. It should be noted however, that although prohibited, some use of leaded solder or leaded components may have occurred after the prohibitions became effective."