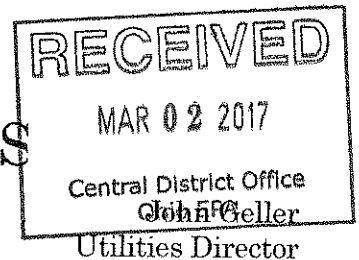




DIVISION OF UTILITIES



70 Dorsey Mill Road * Heath, OH 43056 * (740) 522-1677 * FAX (740) 522-5249
www.heathohio.gov * jgeller@heathohio.gov

2-27-17

Lead Mapping In Distribution System
City of Heath
PWSID # OH 4500912

Lead Service Lines: The distribution system consists of approximately 86 miles of water main, all water main specifications 925.01 codified ordinances of the City of Heath are cast iron pipe, ductile iron pipe, PVC C- 900 pipe, and AC pipe; we have six booster stations and five storage facilities. There are two underground concrete reservoirs with a combined capacity of 1.5 million gallons, and three standpipes glass lined harvester styled tanks with a combined capacity of 885,000 gallons. The first water treatment plant was built in 1957 with a capacity of one million gallons per day. We are a relatively young City. Our service lines from the main to the curb box shut off valve have always been copper type K water service line. This has been in the city ordinances since the inception of the water plant, 925.01 specifications City of Heath Codified Ordinances. From the water box valve to the customer consists of copper, galvanized, and polyethylene 5100 200 psi in required copper tube size. I have worked for the City of Heath for 36 years both in distribution, water plant production, and wastewater treatment. In those 36 years, I have never seen or was made aware of any lead service lines in the City of Heath.

Lead Solder, Fixtures: The City of Heath used zoning permits to divide the residential, commercial, and industrial areas on the City of Heath lead mapping. Looking at our lead mapping, we have 3 categories: After 2014 in green , 1998 - 2014 in yellow, and before 1998 no color.

City of Heath Lead and Copper Required Testing: As we stated back in May of 1992 when we did our original investigation of possible lead service lines in the City of Heath in a letter to Mr. John J. Sadzewics, we stated we had some older cast iron water pipe that we inherited from the City of Newark. In those investigations, all of those older homes that were investigated, had galvanized and copper service lines. I have included the original survey in this document. As we stated in the letter, we could only target homes built between 1982 and 1987 that could contain higher levels of lead solder.

The Following Results:

40- Samples 1992 Lead Copper- No Violations

40 samples 1993 Lead Copper- No Violations

20 samples 1993 Lead Copper- No Violations

20 Samples 1994 Lead Copper- No Violations

20 Samples 1995 Lead Copper – No Violations

20 Samples 2000 Lead Copper- No Violations

20 Samples 2003 Lead Copper- No Violations

20 Samples 2006 Lead Copper- No Violations

20 Samples 2009 Lead Copper- No Violations

20 Samples 2012 Lead Copper- No Violations

20 Sample 2015 Lead Copper- No Violations

Respectfully,
John L. Geller
Utilities Director
City of Heath



CITY OF HEATH

WATER & WASTEWATER DEPT.

1287 Hebron Road

Heath, Ohio 43056



5-22-92

Ohio E.P.A.
John J. Sadzewicz
P.O. Box 1049, 1800 WaterMark Dr.
Columbus, Ohio 43266-0149

Mr. Sadzewicz

This Letter is in regards to the Lead and Copper Rule for medium sized Public water systems. I am informing the E.P.A. that there is no lead service lines to our knowledge in the City of Heath. The water plant was built in 1957 and is made up primarily of Copper and Galvanized service lines. However we do have some older water lines that we inherited from the city of Newark. We ran a material survey Investigation on homes that were on these original lines. We visited each home and found that lead did not exist in these homes. However we do have homes built between 1982 and 1987 with copper and Lead solder. I just want to inform you that we will be sending you tier one results with only copper and lead solder in homes and service lines. If I can be of further assistance, please feel free to notify me at the Heath Water Dept.

Thank You

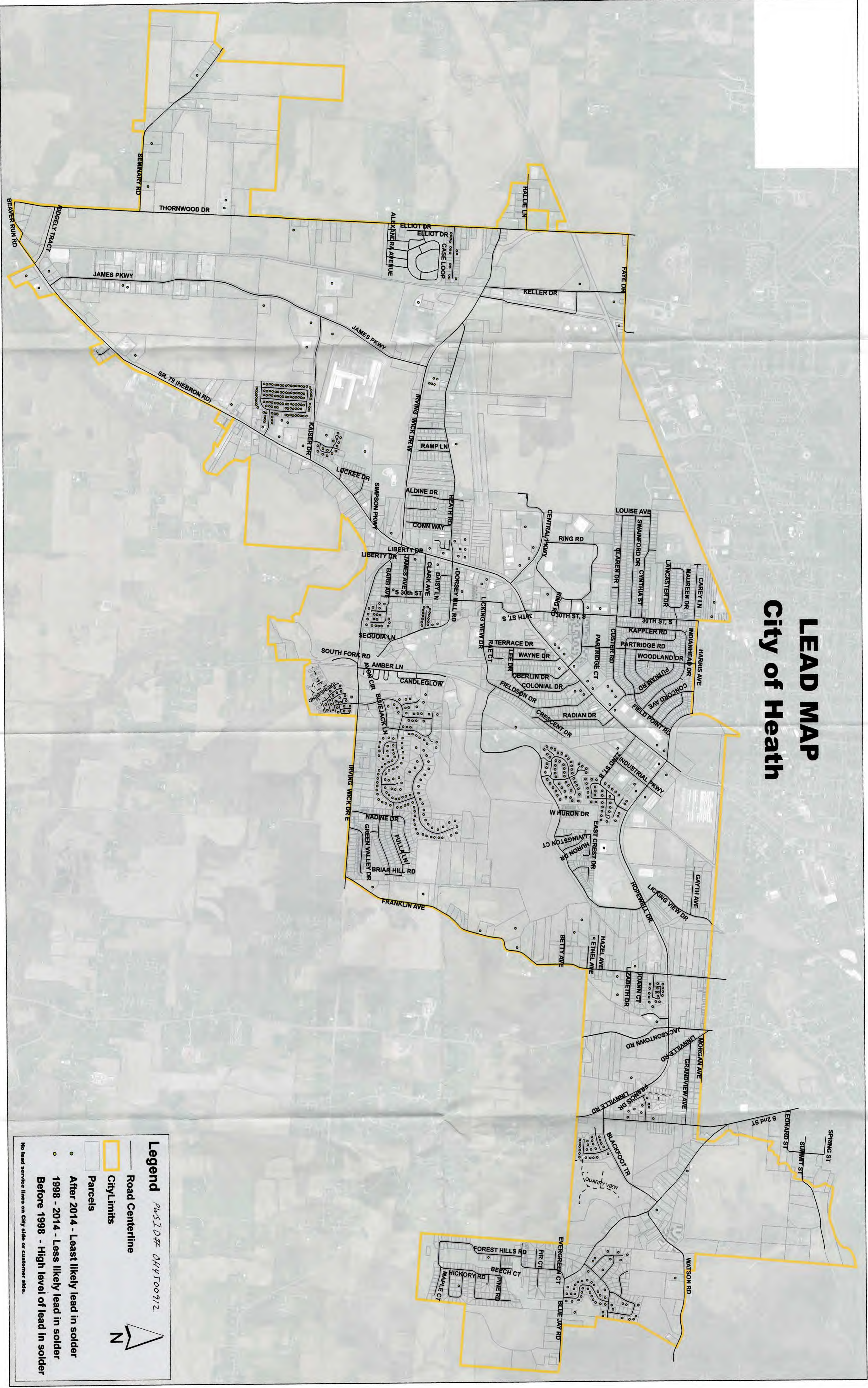
John L. Geller
Heath Water Dept.
70 Dorsey Mill Rd.
Heath, Ohio 43056
Phone (614) 522-1677
PWS ID 4500912



MEMBER NATIONAL SAFETY COUNCIL

LEAD MAP

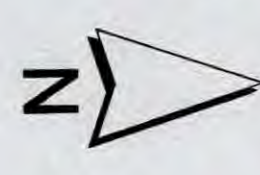
City of Heath



Legend PWSID# OHW100912

- City Limits
- Road Centerline
- Parcels
- After 2014 - Least likely lead in solder
- 1998 - 2014 - Less likely lead in solder
- Before 1998 - High level of lead in solder

No lead service lines on City side or customer side.



RECEIVED

MAR 02 2017
Central District Office
Ohio EPA