



# CITY OF NEWARK

DIVISION OF WATER AND WASTEWATER

Shawn L. Wagner  
Plant Superintendent  
[Swagner@newarkohio.net](mailto:Swagner@newarkohio.net)

Don Dyar  
Asst. Superintendent  
[Ddyar@newarkohio.net](mailto:Ddyar@newarkohio.net)

## Water Treatment Plant

164 Waterworks Road, Newark, OH 43055

[www.newarkohiowater.net](http://www.newarkohiowater.net)

Plant (740) 349-6765  
Lab (740) 349-6765

Office (740) 349-6766  
Fax (740) 349-6799

---

Friday, March 3, 2017

The City of Newark water distribution system mains are mostly cast iron. Other types of pipe materials are ductile iron and asbestos-cement (AC). All new service lines are copper. The city has been and continues to replace Lead service lines with copper. The known lead service lines indicated on the map are on a list to be replaced with copper. The "No Information" service lines on the map are currently being investigated and updates to the city's database is ongoing to achieve more accurate information about our distribution system.

Because it is practically impossible to determine the lead content of an installed fixture, fitting or pipe, it should be assumed that the manufacture or installation date is the primary indicator of the lead content. Therefore, the characteristics of buildings and piping solder or fixtures would be buildings in Ohio built prior to 1998 or that use plumbing material or solder manufactured before 1998 may have materials with greater than 8% lead and are at a higher risk of contributing lead to the drinking water than materials manufactured after 1998. In addition, buildings built and plumbing materials manufactured after 2014 were required to have less than 0.25% lead by weight and have the lowest risk for contributing lead to the drinking water. It should be noted however that, although prohibited, some use of leaded solder or leaded components may have occurred after the prohibitions became effective.

Sincerely,

Shawn L. Wagner  
W.T.P. Superintendent  
City of Newark

Cc File

### MISSION...

"To provide essential services that protect public health, preserve the environment, and support sustainable growth of the community."



# City of Newark

## Lead and Copper Sample Sites in Water Distribution System

Legend

Service Line Material

★

Lead Sample Site

★

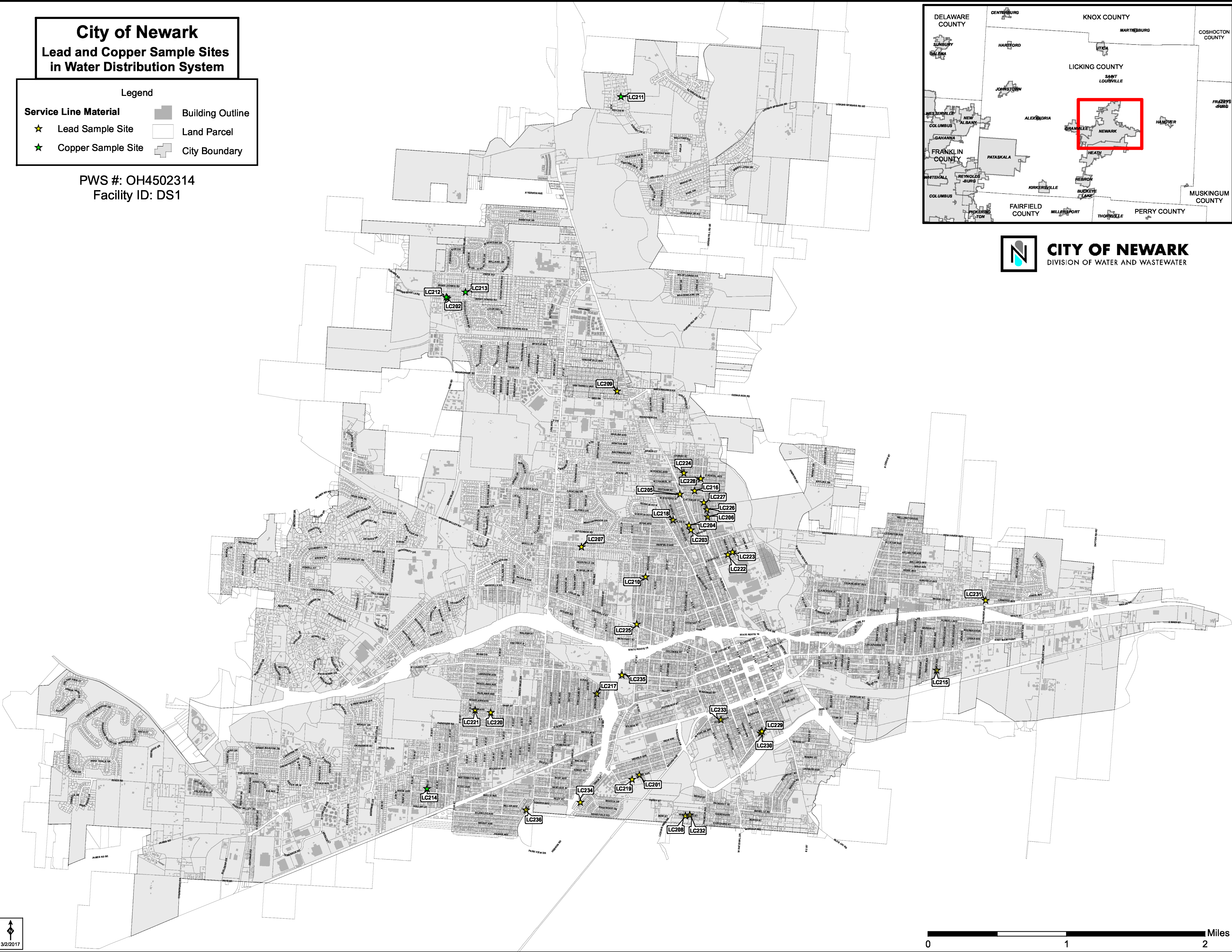
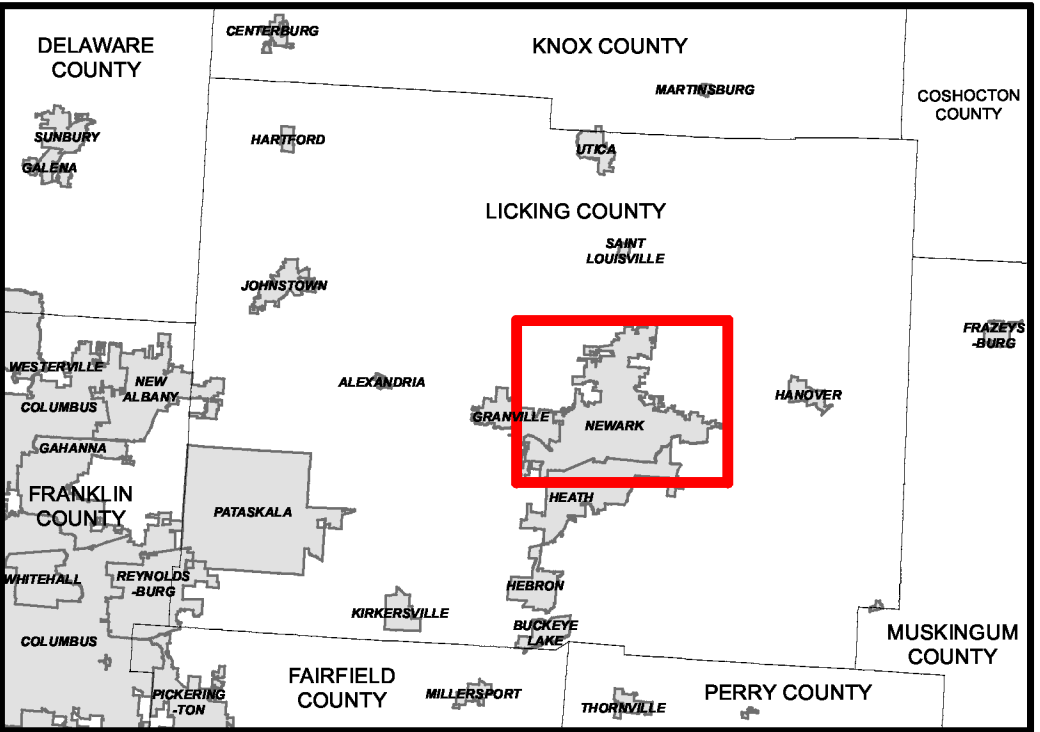
Copper Sample Site

Building Outline

Land Parcel

City Boundary

PWS #: OH4502314  
Facility ID: DS1





# City of Newark

## Lead Service Lines in Water Distribution System

Legend

■ Lead

■ NonLead

■ No Information

■ Building Outline

■ Land Parcel

■ City Boundary

PWS #: OH4502314  
Facility ID: DS1

3/2/2017

0 1 2 Miles