

GolfWorks Water Lines and Material Identification

Color Identification of Water Lines on Maps

Green	Polyethylene (Black Plastic Pipe)
Orange	Copper Pipe

Building / Lines	Material Identification
Service Lines	All service lines to all buildings from WELLS are Polyethylene pipe
House "Original"	The Original House was built in 1910. Partially Remolded in 1983. All waterlines are copper pipes but is highly likely to contain lead solder and fixtures. The service lines to the House "Original" are Polyethylene pipe
House First Addition	The Original House was built in 1983. All waterlines are copper pipes but is highly likely to contain lead solder and fixtures. The service lines to the House First Addition are Polyethylene pipe
House Second Addition	The Original House was built in 1989. All waterlines are copper pipes but is highly likely to contain lead solder and fixtures. The service lines to the House Second Addition are Polyethylene pipe
Building #1	The Building #1 was built in 1979 - 1980. All waterlines are copper pipes but is highly likely to contain lead solder and fixtures. The service lines to the building are Polyethylene pipe
Building #2 with Addition	The Building #2 was built in 1981. The addition was built in 1984. All waterlines are copper pipes but is highly likely to contain lead solder and fixtures. The service lines to the building are Polyethylene pipe
Shipping Building #3 First Half	The Shipping Building #3 First Half was built in 1983. All waterlines are copper pipes but is highly likely to contain lead solder and fixtures. The service lines to the Shipping Building #3 First Half are Polyethylene pipe
Shipping building #3 Second half	The Shipping Building #3 First Half was built in 1987. All waterlines are copper pipes but is highly likely to contain lead solder and fixtures. The service lines to the Shipping Building #3 Second Half are Polyethylene pipe
Maintenance / Call Center	The Maintenance / Call Center was built in 1987. All waterlines are copper pipes but is highly likely to contain lead solder. The service lines to the Maintenance / Call Center are Polyethylene pipe
2 Storage Barns	No Water Lines
Fitting Area	No Water Lines

THE GOLFWORKS
4820 JACKSONTOWN RD.
NEWARK, OHIO 43058-3008

GRAVEL DRIVE

GOLFWORKS PROPERTY LINE

WELL

MAIN OFFICE

MAINTENANCE /
CALL CENTER

WELL

JACKSONTOWN ROAD / ROUTE 13

GOLFWORKS PROPERTY LINE

GOLFWORKS PROPERTY LINE

POND

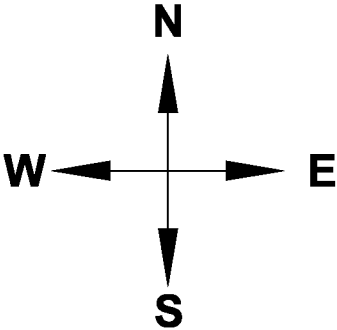
POND

SHIPPING
BUILDING #3

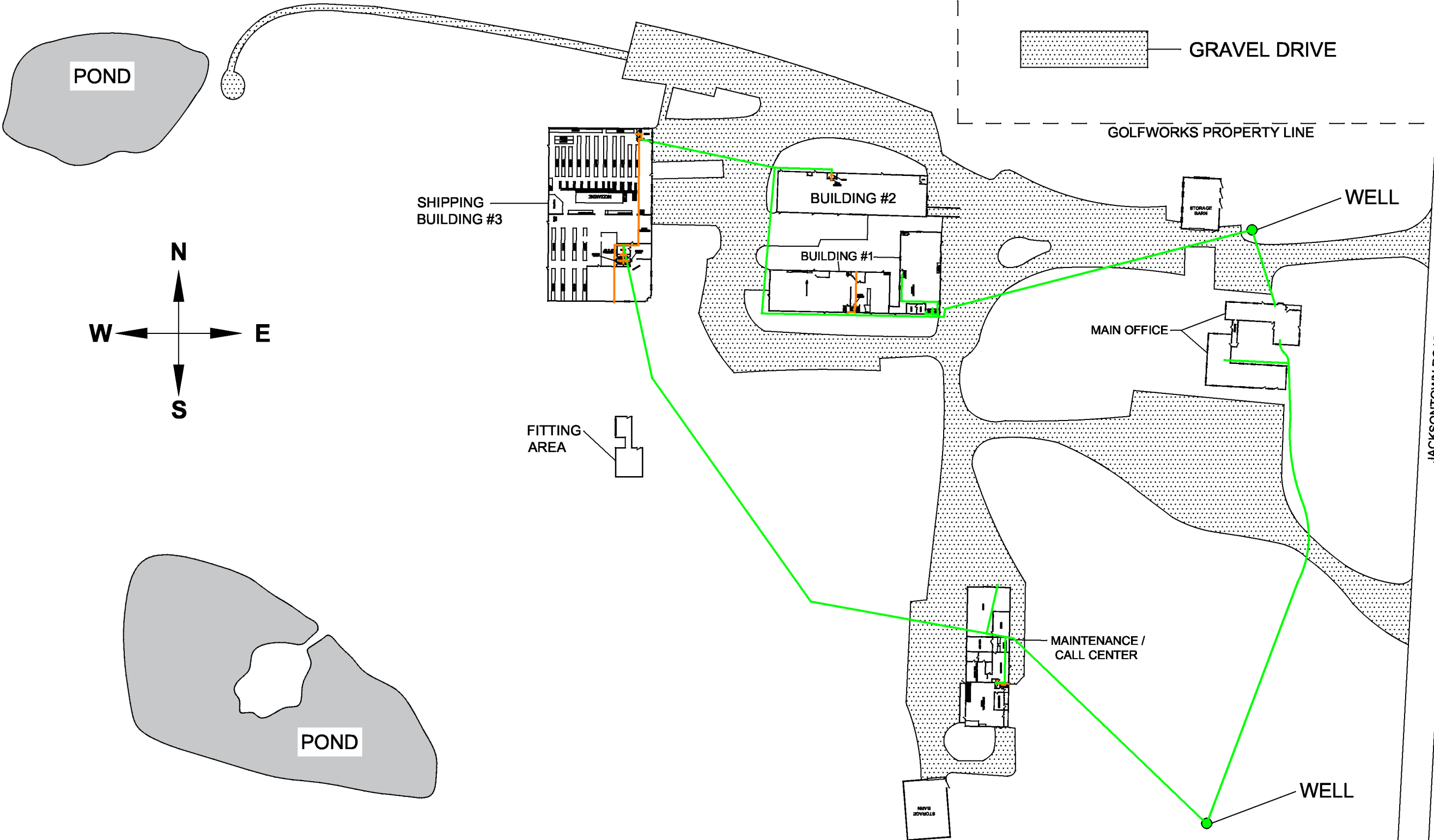
BUILDING #2

BUILDING #1

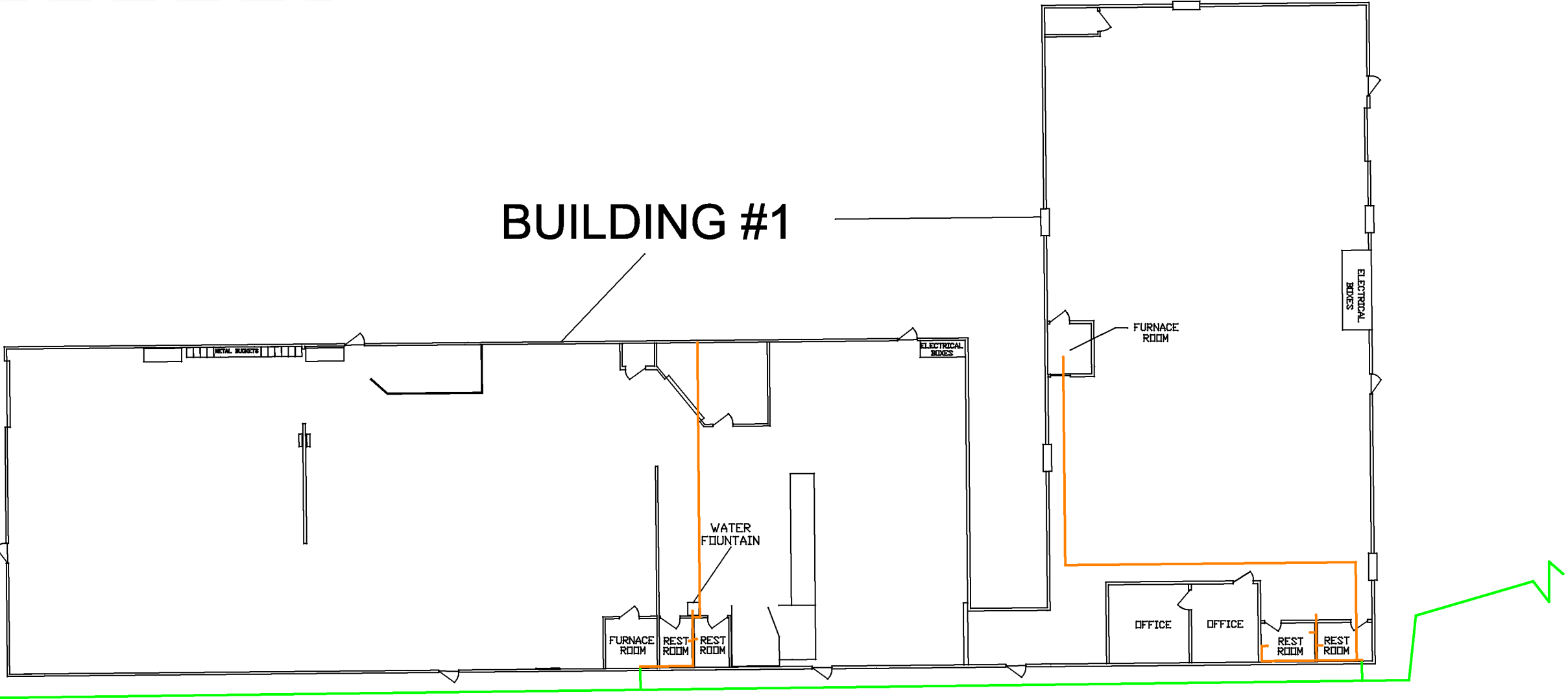
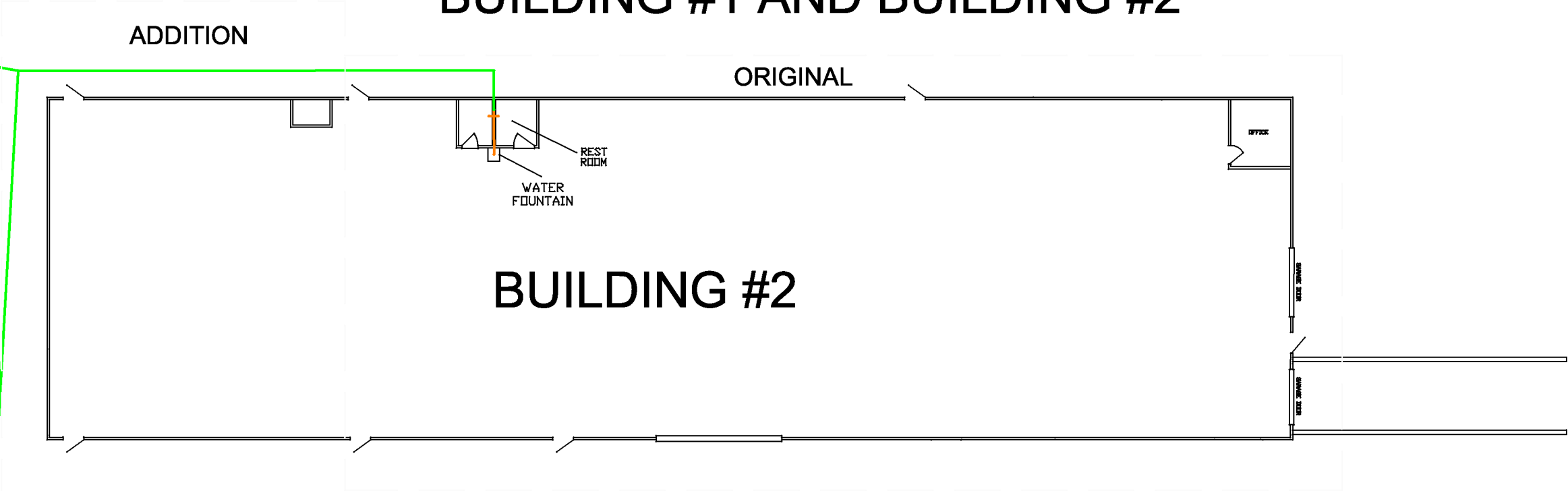
FITTING
AREA



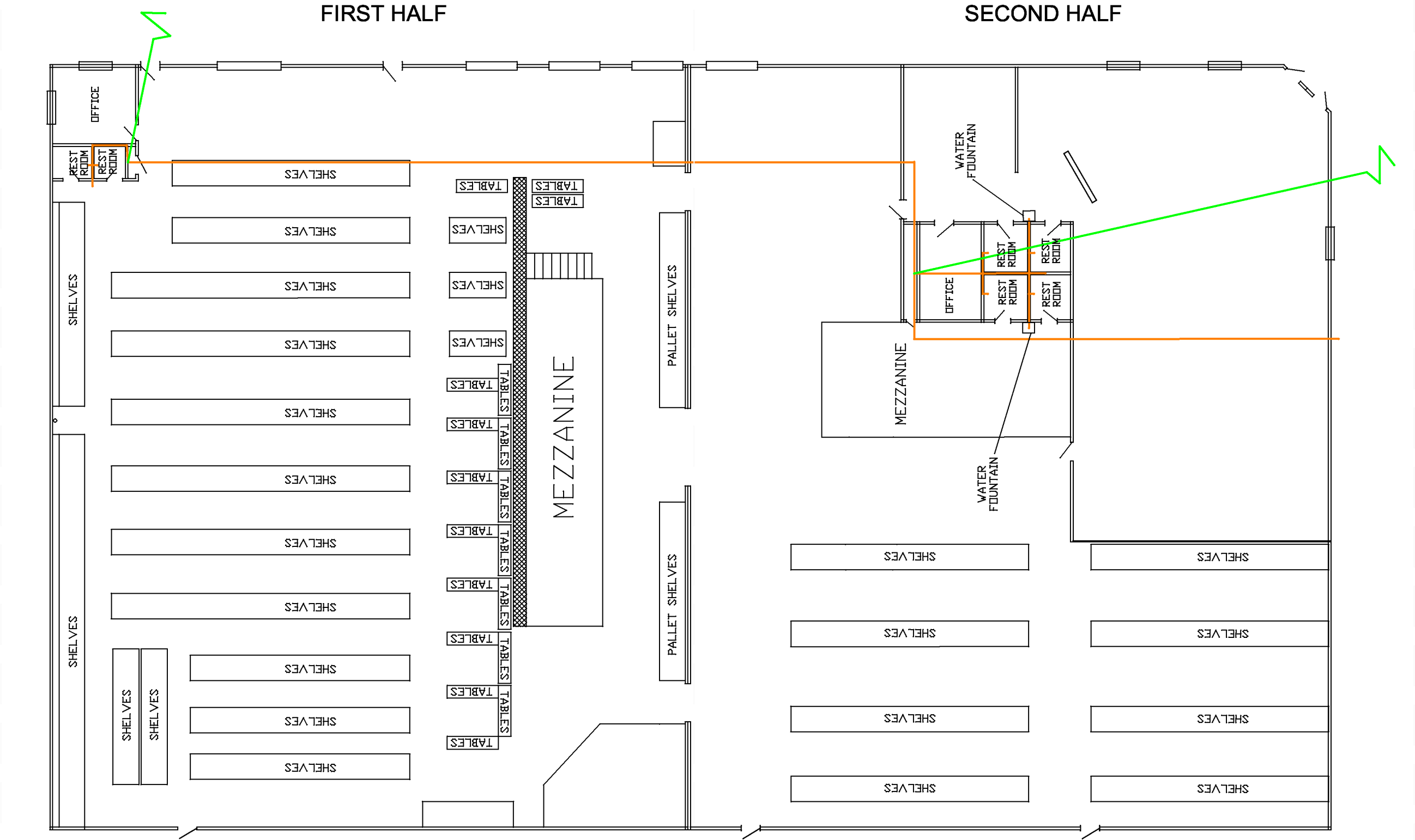
GOLFWORKS PROPERTY LINE



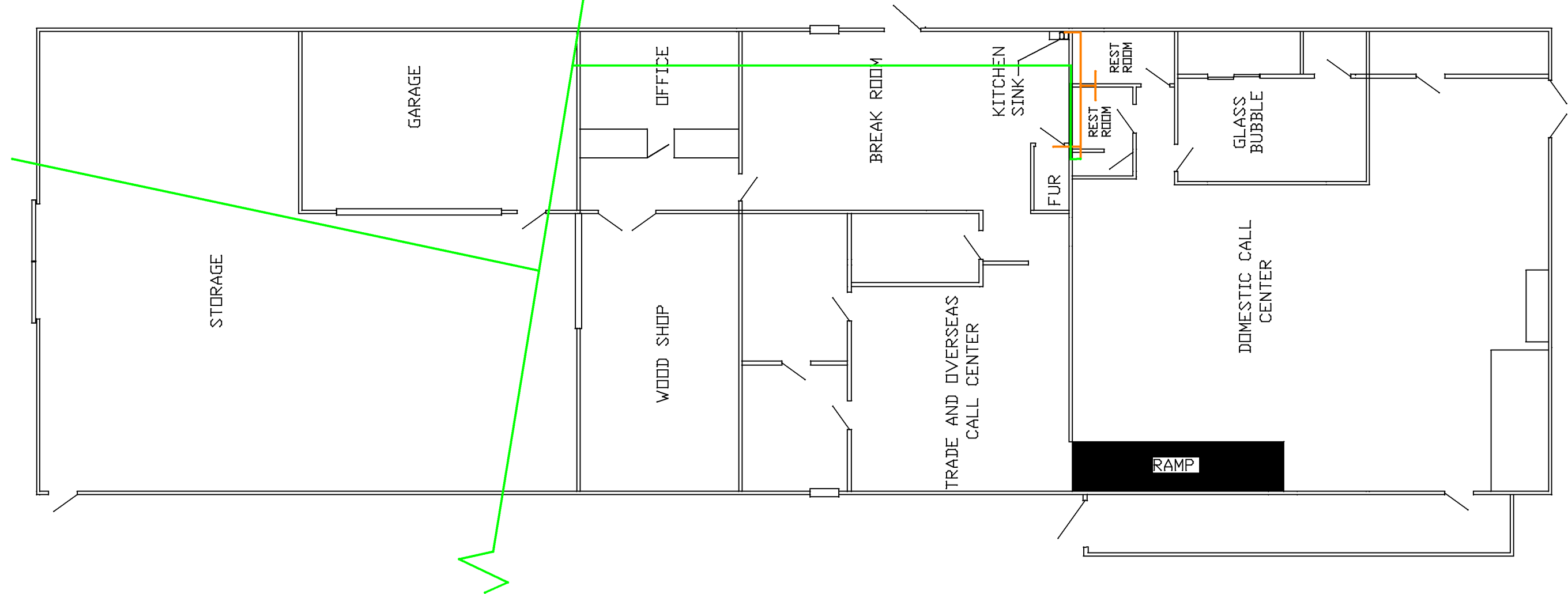
BUILDING #1 AND BUILDING #2



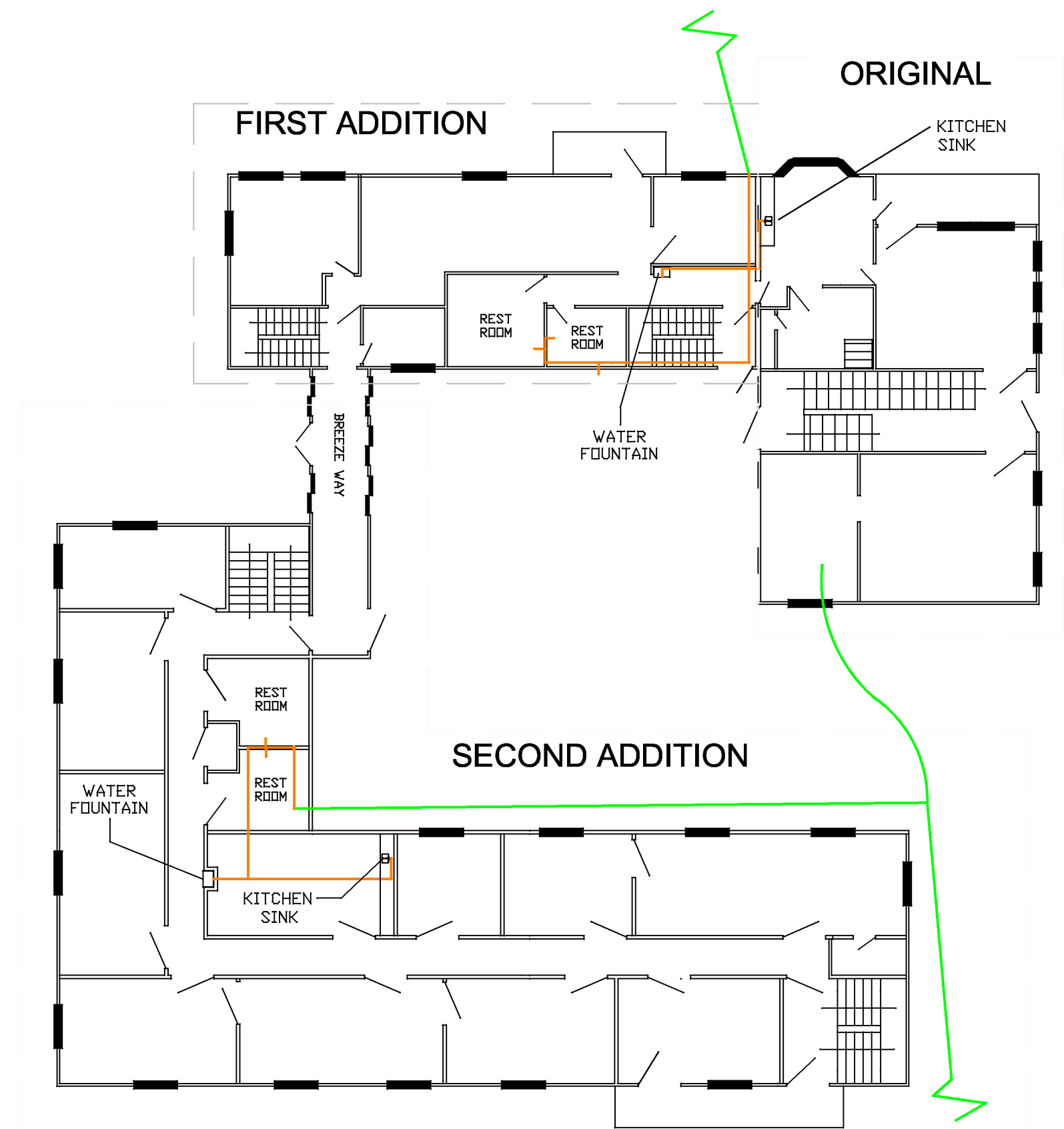
SHIPPING BUILDING #3



MAINTENANCE / CALL CENTER



FIRST FLOOR MAIN OFFICE



SECOND FLOOR MAIN OFFICE

