

RE: Shelly Acres
Report
Drinking Water Program
Richland County
PWS ID: OH7004612

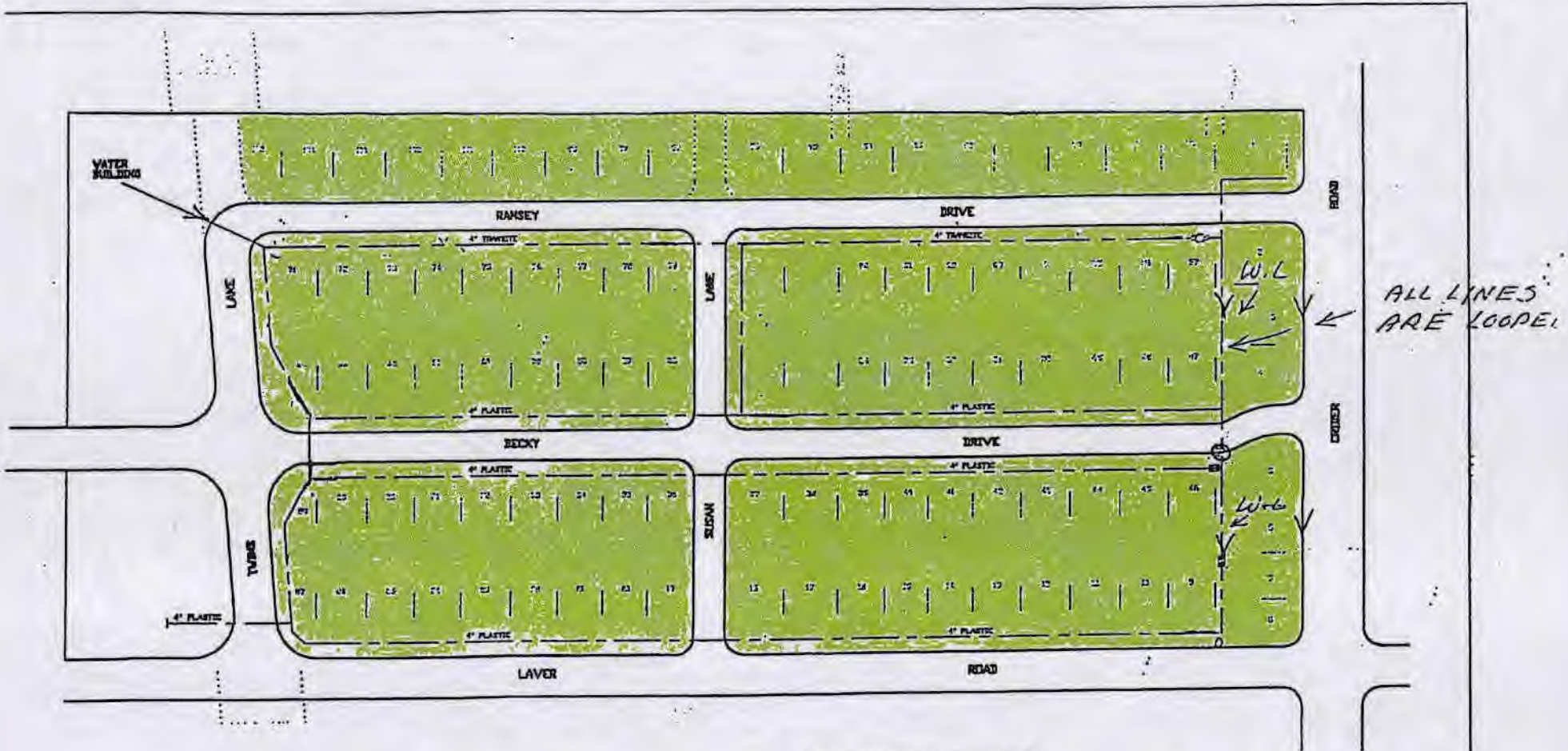
RECEIVED

MAR 02 2017

N ->

Shelly Acres Water Distribution - Lead mapping
PWS # oh 7004612

DDAGW - NWDO



— All homes Built 1998 or Before (Likely Lead Solder)

All Public Service Lines are Nonlead

CODES	
—	WATER LINES
—	SHUT-OFF VALVE
—	FIRE HYDRANT

SHELLY ACRES

PWS ID
7004612