

RE: Bellville Village Water
Report
Drinking Water Program
Richland County
PWS ID: OH7000012

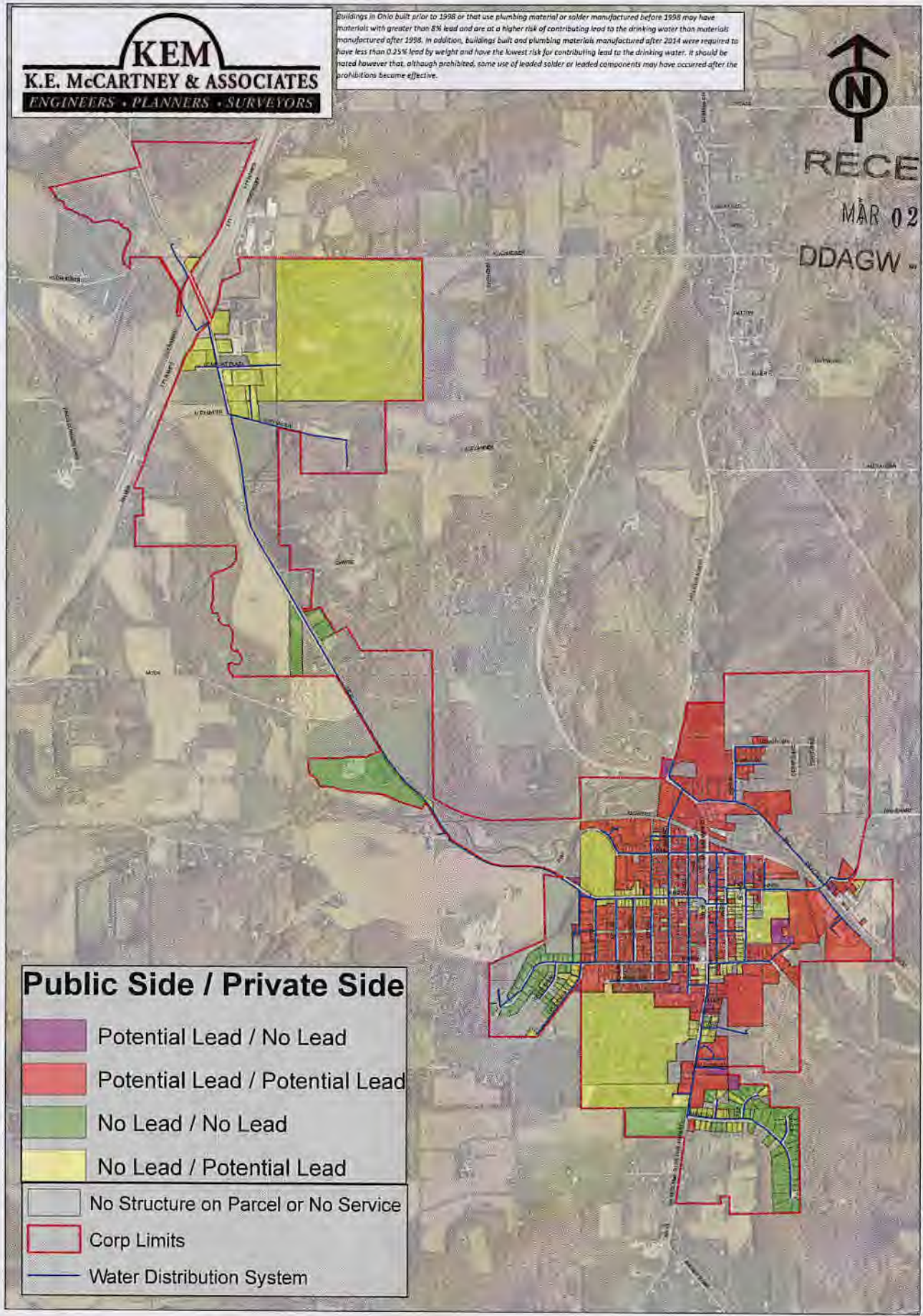
Village of Bellville Water Distribution System - Lead Mapping



Buildings in Ohio built prior to 1998 or that use plumbing material or solder manufactured before 1998 may have materials with greater than 8% lead and are at a higher risk of contributing lead to the drinking water than materials manufactured after 1998. In addition, buildings built and plumbing materials manufactured after 2014 were required to have less than 0.25% lead by weight and have the lowest risk for contributing lead to the drinking water. It should be noted however that, although prohibited, some use of leaded solder or leaded components may have occurred after the prohibitions became effective.



RECEIVED
MAR 02 2017
DDAGW - NWDO



Public Side / Private Side

- Potential Lead / No Lead
- Potential Lead / Potential Lead
- No Lead / No Lead
- No Lead / Potential Lead
- No Structure on Parcel or No Service
- Corp Limits
- Water Distribution System