



RECEIVED  
DDAGW

2017 MAR -2 AM 11:06

Tuesday, February 28, 2017

Ohio EPA  
Division of Drinking and Ground Water

PWSID: OH8033612

Raymond Elementary  
21511 Main St.  
Raymond, Ohio 43067



- 1) The oldest section of Raymond Elementary (outlined in Green) was built in 1939. The 1939 section was renovated in 2001, including new copper water distribution piping. It is highly unlikely that the solder and/or plumbing fixtures in this section of the building contain lead.
- 2) A building addition (outlined in Red) was added to Raymond Elementary in 1996. The 1996 section water distribution piping is copper. It is unlikely that the solder and/or plumbing fixtures in this section of the building contain lead.
- 3) The most recent addition to Raymond Elementary (outlined in Black) was added in 2001. The 2001 section water distribution piping is copper. It is highly unlikely that the solder and/or plumbing fixtures in this section of the building contain lead.
- 4) Well #2 and #3 were both drilled in 2001. Both well casings are PVC plastic. It is highly unlikely that these assemblies contain lead.
- 5) Well #1 was taken out of service and abandoned in 2001.
- 6) Underground water service piping is white PVC plastic pipe. Joined together using solvent/glue. It is highly unlikely that this piping contains lead.
- 7) All (5) of the lead/copper sampling points are located in the 1996 section of the building (outlined in Red) per 2013 Carolyn O'Neal directive (OEPA Rep)
- 8) Updated SMP ID template emailed out to Michael Deal at Ohio EPA.

Thank you,

Jeff Wargo  
Director of Maintenance  
Marysville Exempted Village School District  
937-578-6175

Well #2 PVC well casing Drilled in 2001

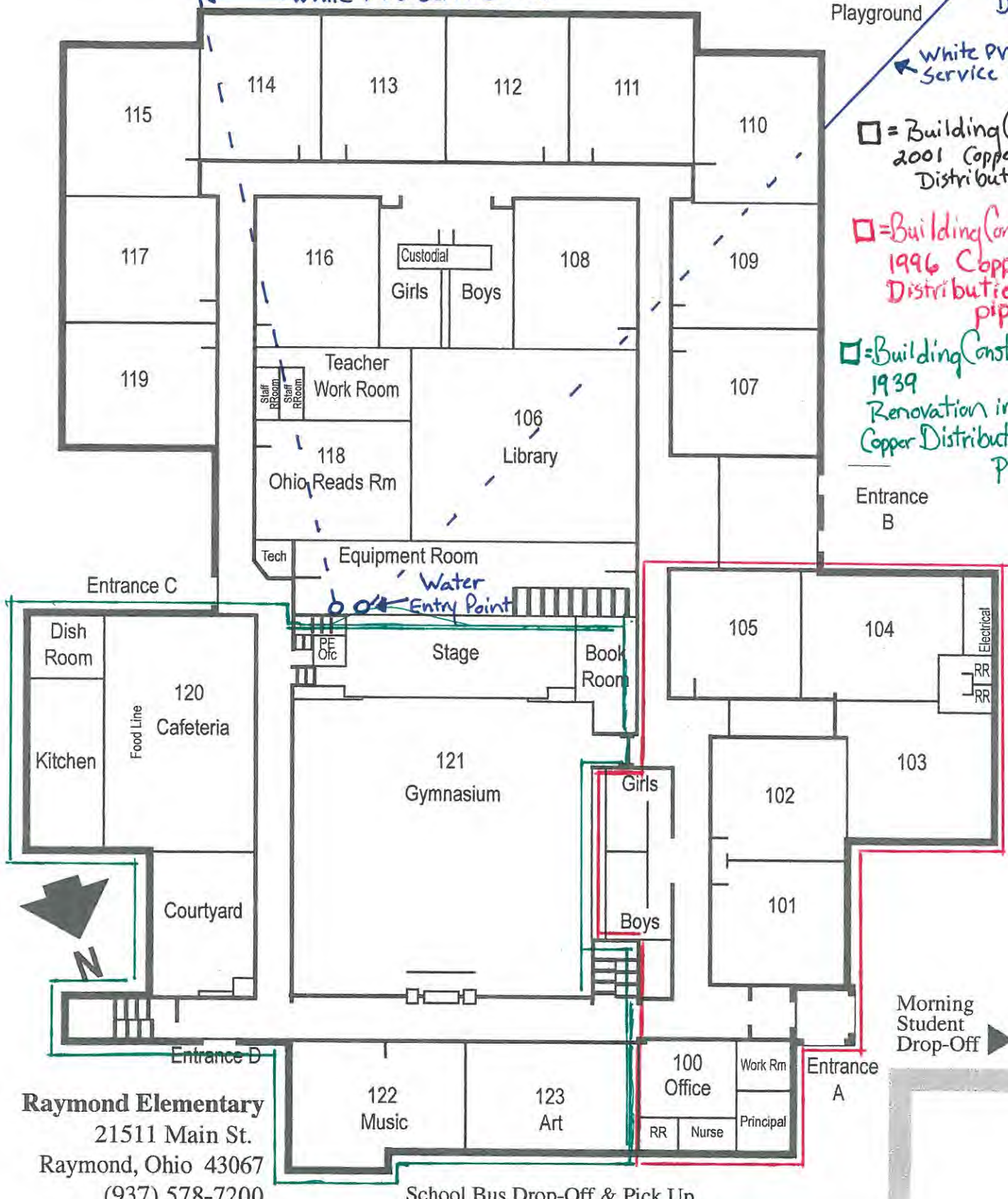
Well #3 PVC well casing Drilled in 2001

# Raymond Elementary Building Map

White PVC Service line

White PVC Service line

- = Building Construction 2001 Copper Distribution Piping
- = Building Construction 1996 Copper Distribution piping
- = Building Construction 1939 Renovation in 2001 Copper Distribution piping



Raymond Elementary  
21511 Main St.  
Raymond, Ohio 43067  
(937) 578-7200

Carol Lentz, Principal PWSID: OH8033612



# Raymond Elementary Building Map



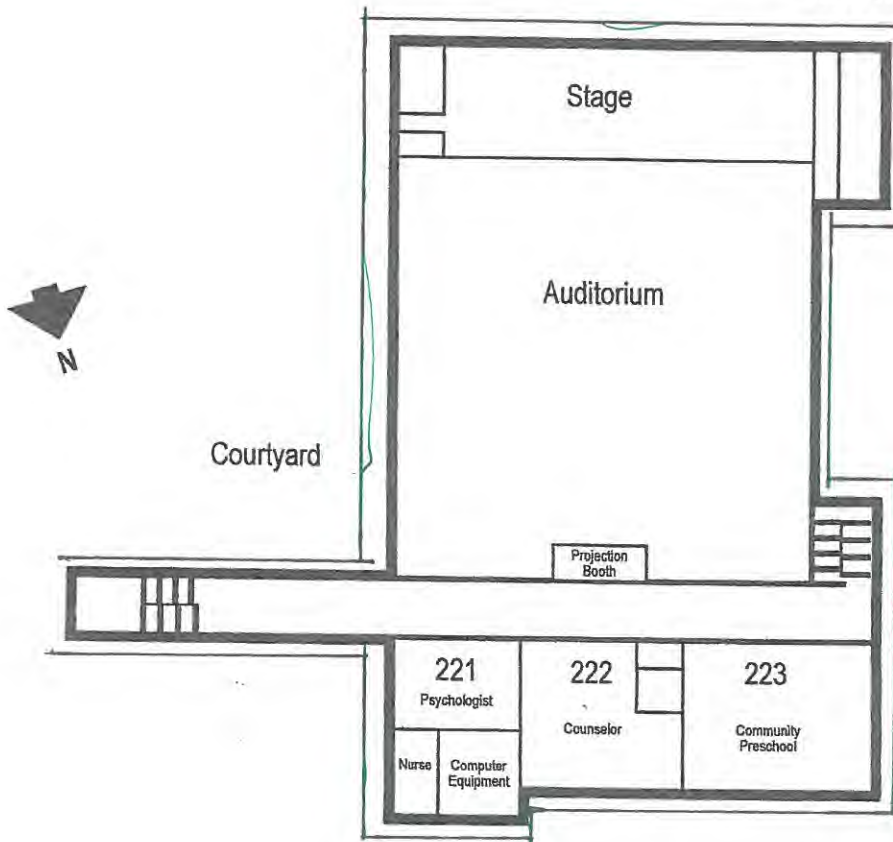
21511 Main St.  
Raymond, Ohio 43067  
937-578-7200

Innovate Collaborate Inspire

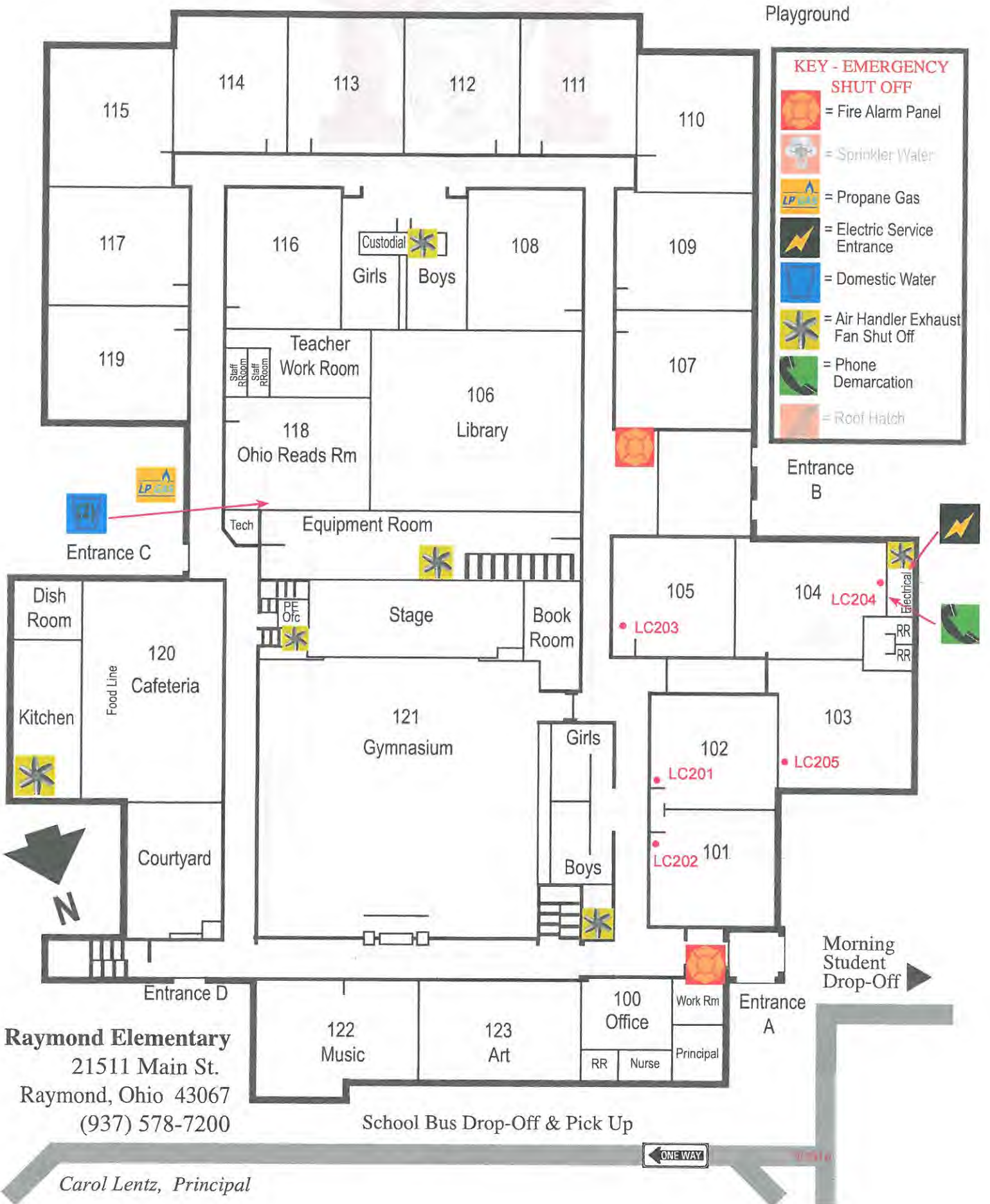
PWSID: OH8033612

□ = Building Construction 1939  
Complete Renovation in 2001  
Copper Distribution piping 2001

SECOND FLOOR PLAN



# Raymond Elementary Safety Map



**Raymond Elementary**  
 21511 Main St.  
 Raymond, Ohio 43067  
 (937) 578-7200

School Bus Drop-Off & Pick Up

*Carol Lentz, Principal*

# Raymond Elementary Safety Map



SECOND FLOOR PLAN

