

Dover, PWS OH7900412

2017 Lead and Copper Mapping Narrative

Because it is practically impossible to determine the lead content of an installed fixture, fitting or pipe, it should be assumed that the manufacture or installation date is the primary indicator of the lead content. Therefore, the characteristics of buildings and piping solder or fixtures would be **buildings in Ohio built prior to 1998, or that use plumbing material or solder manufactured before 1998, may have materials with greater than 8% lead. They are at a higher risk of contributing lead to the drinking water than materials manufactured after 1998. In addition, buildings built and plumbing materials manufactured after 2014 were required to have less than 0.25% lead by weight and have the lowest risk for contributing lead to the drinking water. It should be noted, however, that although prohibited, some use of leaded solder or leaded components may have occurred after the prohibitions became effective.**

The City of Dover has numerous areas that were developed over different periods in time. Dover started a departmental policy of using type K copper and mechanical fittings for their potable water services in 1950. Dover has been in the process of finding and replacing the remaining galvanized steel service lines in the water distribution system. When Dover replaces its portion of a water service line, from the water main to and including the shutoff valve in the curb strip, we suggest that the property owner replace their portion of the water service, from the shut off valve in the curb strip into the home or building.

Our department has utilized our current available information such as service permits, service repairs, and replacement records to improve our water mapping. Locations with non-lead (copper) services connections are colored in green, lead service lines are colored in yellow and locations with no information are colored gray on our water system map. We have mailed out survey forms requesting structure age, plumbing age, plumbing material and contact information, as well as asking our water customers to volunteer in our lead and copper testing. Appropriate sites chosen for sampling have been marked with a red star on the system map. The plumbing information provided by the water customers has been very valuable because the age of the home is not always an

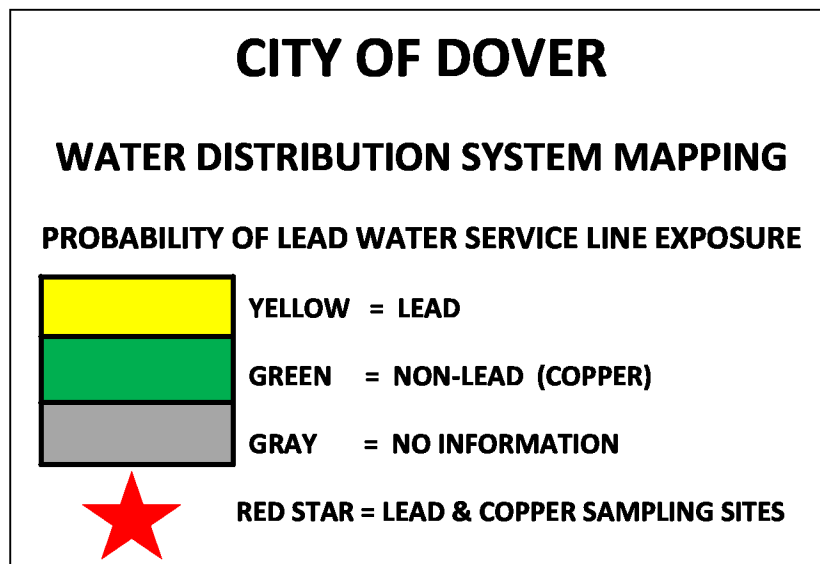
indication of the age of the plumbing. Older plumbing is often replaced but many homes may still have the older lead solder in the copper plumbing as well as the older fixtures.

Dover's drinking water has a neutral pH and is considered hard. When left undisturbed the naturally occurring minerals in the water will coat the inside of the pipes and fixtures and help to isolate lead from contact with the drinking water. Dover's drinking water lead and copper testing results have been consistently below action levels.

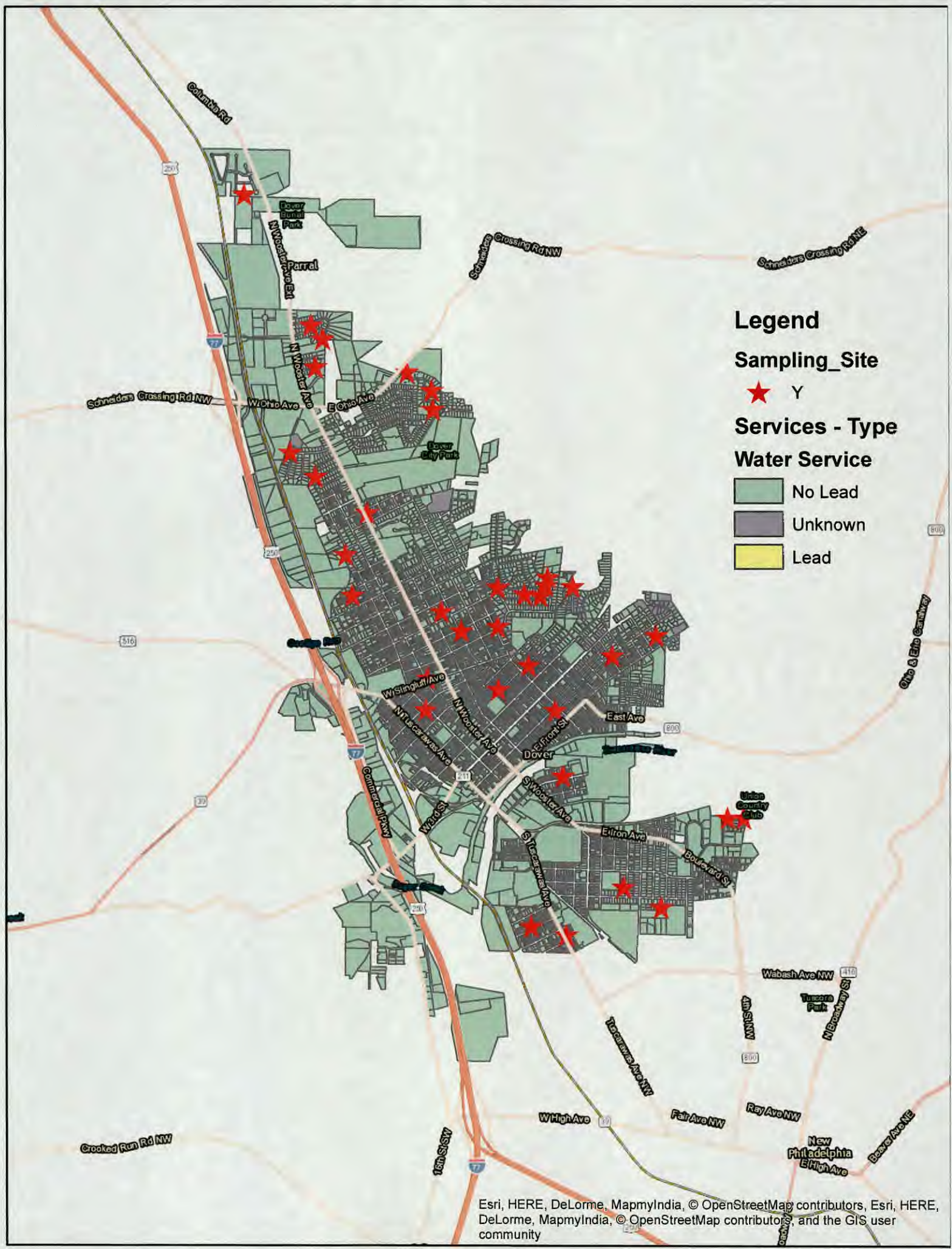
After checking our records, we have determined that we have roughly 5100 water services in the City Of Dover, out of the 5100 services around 570 are unknown and may be copper or galvanized iron pipe. After checking the county tax records for the year that a house was built, we have determined that approximately 200 of the 570 unknown service locations were built after 1950 and should be copper.

To summarize, approximately 370 out of the 5100 water services or 7.25% of the water services are unknown, and approximately 92.75% of Dover's water services are copper.

Included below is the legend information for the lead and copper mapping.



Note: the mapping is always viewed with true north at the top of the page.



Legend

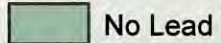
Sampling_Site



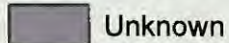
Y

Services - Type

Water Service



No Lead



Unknown



Lead