

Lead & Copper Mapping Project

PWS Name: Metzenbaum Sheltered Industries

PWS #: OH 2854112

Year Built: 1986

Service Line Material: Non-Lead

Buildings built prior to 1998 or that use plumbing material or solder manufactured before 1998 may have materials with greater than 8% lead and are at a higher risk of contributing lead to the drinking water than materials manufactured after 1998. In addition, buildings built and plumbing materials manufactured after 2014 were required to have less than 0.25% lead by weight and have the lowest risk for contributing lead to the drinking water. It should be noted however that, although prohibited, some use of leaded solder or leaded components may have occurred after the prohibitions became effective.

If you have any questions, please contact:

Clearwater Operations & Maintenance

10180 Queens Way #3

Chagrin Falls, OH 44023

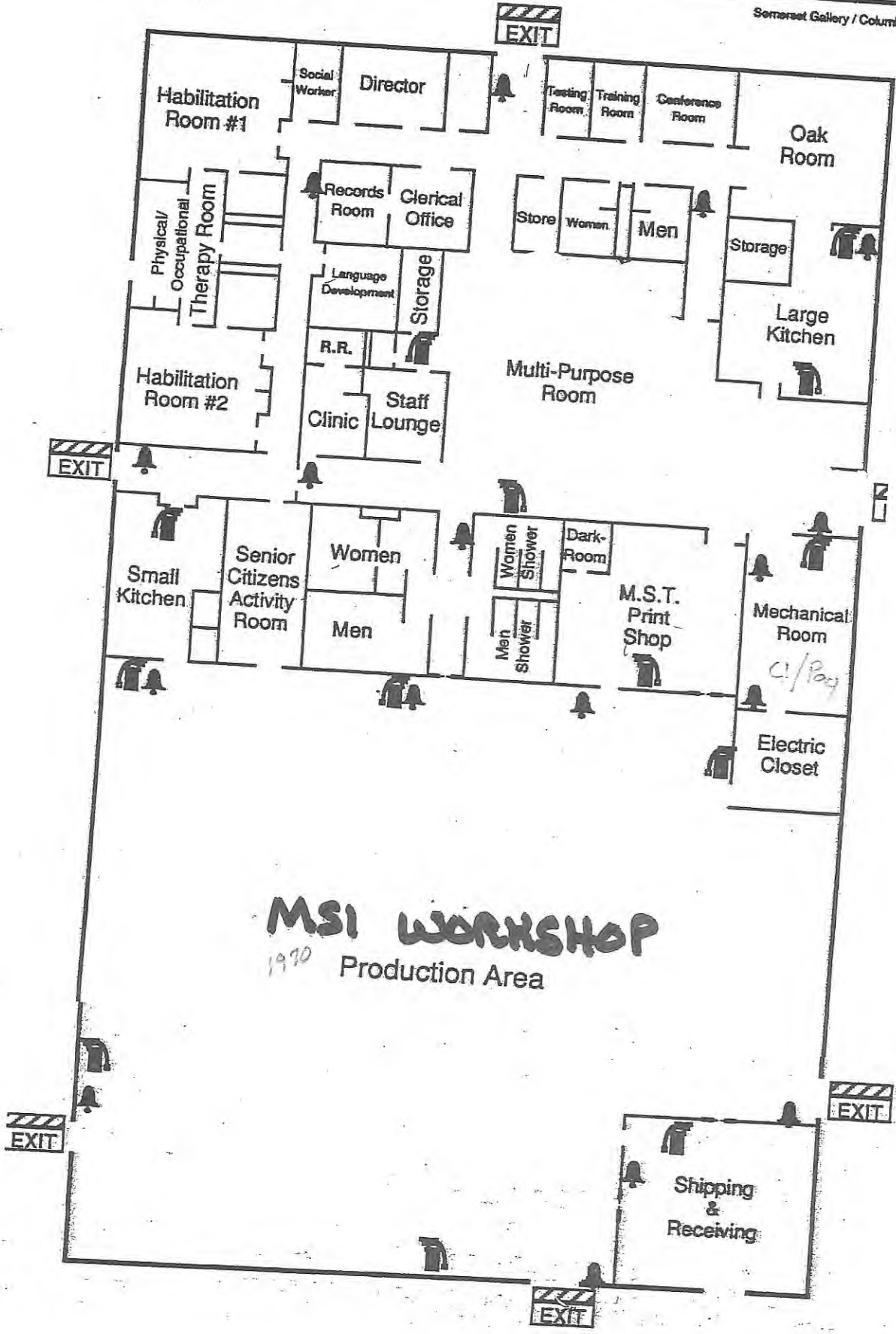
440-708-0266

clearwater@clearwaterops.com

AUTOMATIC ROLL
DOWN FIRE DOORS

TO LEAVE THE BUILDING
FOLLOW LARGE BLUE
ARROWS TO NEAREST EXIT.

Somerset Gallery / Columbus



MSI WORKSHOP
1970 Production Area



 Geauga **REALink**



Geauga County GIS

Frank J. Gliha, Geauga County Auditor
Joe Cattell, Geauga County Engineer PE, PS



1 Inch = 58.83 Feet | Scale: 706

This tax map was prepared by Geauga County GIS in accordance with Section 5713.09 of the O.R.C. Geauga County digital data is a representation of recorder plats, surveys, deeds, and other collected information for use within the Geographic Information System for purposes of public access and analysis. These and other digital data do not replace or modify land surveys, deeds, and/or other legal instruments defining land ownership or use. Geauga County assumes no legal responsibility for this information.

www.auditor.co.geauga.oh.us

February 23, 2017