



Brewster, Ohio

Public Water System Lead (Pb) Components

PWSID# OH7600512
Prepared February 2017

To comply with Section 6109.21 of the Ohio Revised Code, enacted in September 2016, the Village of Brewster in Stark County, Ohio has created the following report and attached map to identify known and potential components of water service lines that contain lead (Pb).

The following information and attached map do not verify the presence of lead in any of the plumbing components or structures shown. The information and map only show the probable or possible locations based on the year that structures were built, or by the year that the plumbing component was installed.

RCAP staff and the Village of Brewster Water Department met on February 15, 2017 to review a map of the service area. No applicable historical maintenance and operation records, tap cards, or as-builts were available to identify lead component locations. Locations where lead service components have been replaced, and locations where lead components are likely still being used, were identified by the Village of Brewster Water Department and recorded in a GIS database.

The digital maps provided depicts the parcels the public water serves, possible locations that may contain lead materials, and residential structure plumbing that may contain lead solder and flux based on structure construction date. It may be noted the Village of Brewster has not detected any lead service lines on the residential(private) side of the water system during meter replacement projects. However, there is a moderate probability that some of the older infrastructure may or may not contain a lead service connection on the public water side of the distribution system.

Public and Private Ownership of Service Lines

The Village of Brewster Water Department distributes water to approximately 782 out of 1445 parcels. The Village owns and maintains service lines from the water distribution mains up to the curb stops for each water customer. The remainder of each service line from the curb stop to the building is the responsibility of the property owner. The public service lines identified as moderate probability is based on the age of the infrastructure.

The tables below provide information about the possibility of lead service line materials to the customers Brewster serves.

Public Service Line Lead Probability		
Possibility of Lead	Public Lines #	% of System
Non Lead	535	68.4%
Moderate Probability	247	31.6%

Private Service Line Lead Probability		
Possibility of Lead	Private #	% of System
Non-Lead	782	100%

Distribution System

Within the distribution system, none of the pipes themselves are known to contain any lead, however, there may be joints, valves, and fittings within the system that may contain lead on some of the older mains.

The Village has been replacing meters since 2004 and are been replaced by the water department. There were no Lead services detected on the residenial(private) side of lateral line. Meters installed after 2014 will have less than 0.25% lead.

The Village of Brewster has approximately 16.7 miles of water main lines. The water system implemented in the early 1940's. Mr. Pepper has work in the water department for approximately 30 years and has overseen the meter replacements.

Indoor Plumbing

Buildings in Ohio built prior to 1998 or that use plumbing material or solder manufactured before 1998 may have materials with greater than 8% lead and are at a higher risk of contributing lead to the drinking water than materials manufactured after 1998.

Buildings built and plumbing materials manufactured after 2014 were required to have less than 0.25% lead by weight and have the lowest risk for contributing lead to the drinking water. It should be noted however that, although prohibited, some use of leaded solder or leaded components may have occurred after the prohibitions became effective.

Customer Self-Reporting

The information on this map regarding privately owned service lines is based on the limited information from the water system staff and Stark County building and parcel data. Property owners are encouraged to inspect their own service lines entering the building if these are in anyway exposed, and notify the Village of Brewster Water Department if they have determined whether or not a lead service line exists. Please contact the Water Department by calling 330-767-3710 or sending an email to Bxwater@brewsterohio.com. A representative from the water department will contact you to confirm and update this information for the next map release.

Contacts and Resources

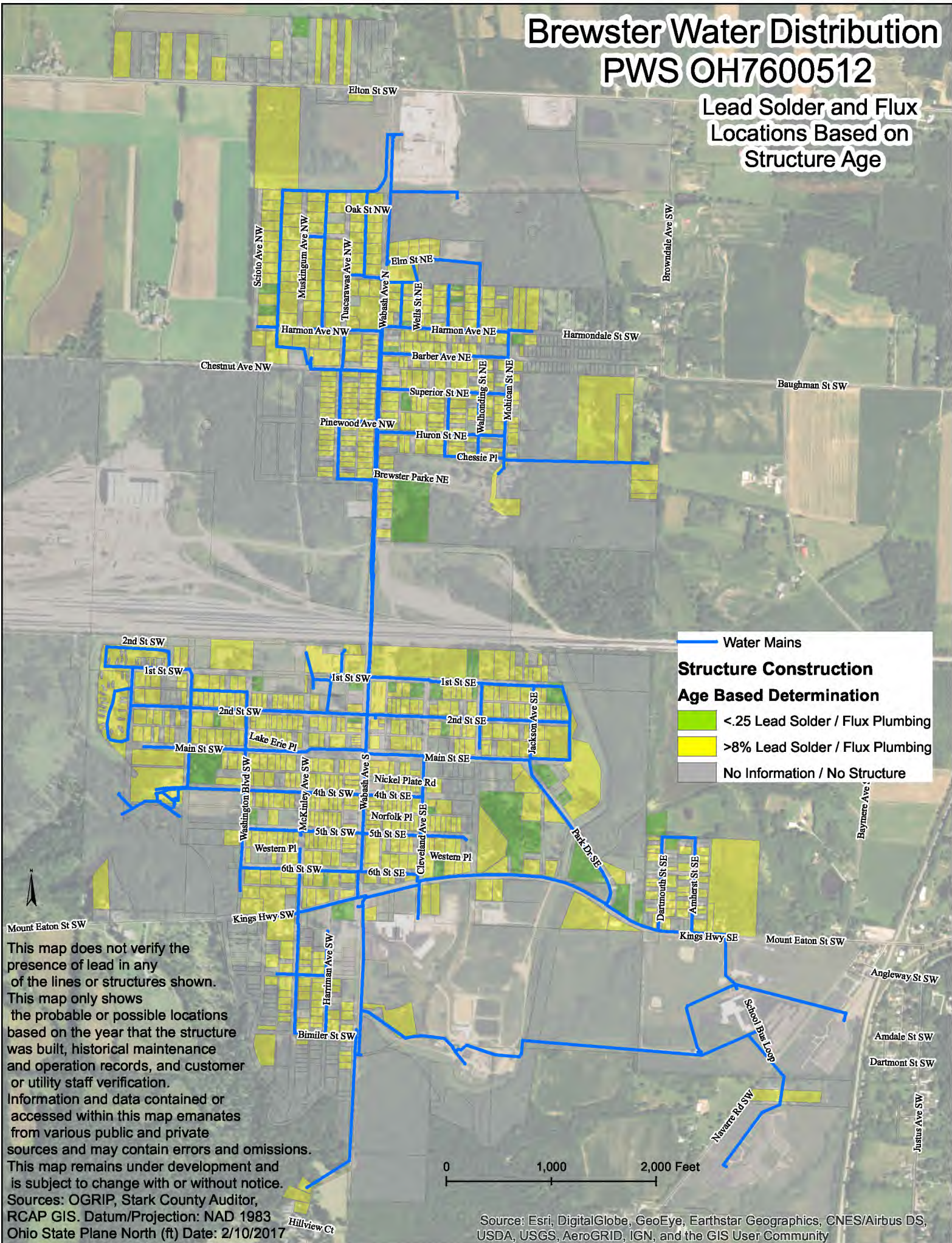
If you have questions about known and potential lead components within the Village of Brewster Public Water System, please contact:

Michael Maybaugh
400 W 4th St
Brewster Ohio, 44613
330-767-3710

For more information about lead service lines and their removal, we recommend the following resources:

- **The Lead Service Line Replacement Collaborative**
<http://www.lslr-collaborative.org/resources-for-concerned-consumers.html>
- **Ohio EPA 'Learn About Lead' page**
<http://epa.ohio.gov/pic/lead.aspx>
- **US EPA Lead in Drinking Water Information Page**
<https://www.epa.gov/ground-water-and-drinking-water/basic-information-about-lead-drinking-water>

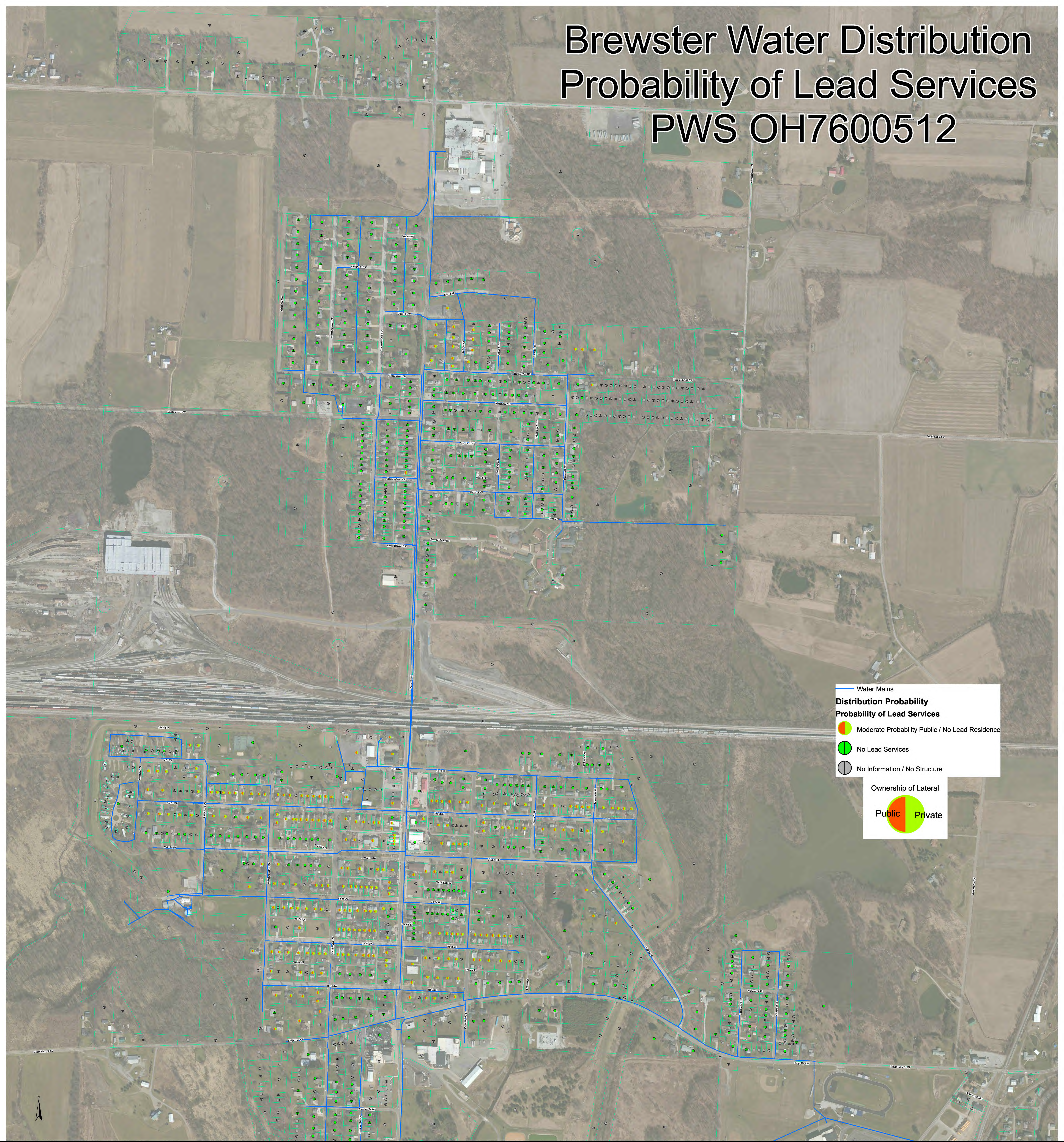
Lead Solder and Flux Locations Based on Structure Age



Brewster Water Distribution

Probability of Lead Services

PWS OH7600512



Water Mains

Distribution Probability
Probability of Lead Services

- Moderate Probability Public / No Lead Residence
- No Lead Services
- No Information / No Structure

Ownership of Lateral

Public Private