

Garrettsville, Ohio

Public Water System Lead (Pb) Components

PWSID# OH6701412
Prepared February 2017

To comply with Section 6109.21 of the Ohio Revised Code, enacted in September 2016, the Village of Garrettsville in Portage County, Ohio has created the following report and attached map to identify known and potential components of water service lines that contain lead (Pb).

The following information and attached map do not verify the presence of lead in any of the plumbing components or structures shown. The information and map only show the probable or possible locations based on the year that structures were built, or by the year that the plumbing component was installed.

RCAP staff and the Village of Garrettsville Water Department met on January 30, 2017 to review a map of the service area. Prior to 1979 no applicable historical maintenance and operation records, tap cards, or as-builts were available to identify lead component locations. Locations where lead service components have been replaced, and locations where lead components are likely still being used, were identified by the Village of Garrettsville Water Department and recorded in a GIS database.

The digital maps provided depicts the parcels the public water serves, possible locations that may contain lead materials, and residential structure plumbing that may contain lead solder and flux based on structure construction date. It may be noted the Village of Garrettsville has not detected any lead service lines on the residential (private) side of the water system during meter replacement projects. However, there is a moderate probability that some of the older infrastructure may or may not contain a lead service connection on the public water side of the distribution system.

Public and Private Ownership of Service Lines

The Village of Garrettsville Water Department distributes water to approximately 985 customers. Village has approximately 1330 parcels within its boundaries. The Village owns and maintains service lines from the water distribution mains up to the curb stops for each water customer. The remainder of each service line from the curb stop to the building is the responsibility of the property owner. The public service lines identified as moderate probability is based on the age of the infrastructure and or material of infrastructure.

The tables below provide information about the possibility of lead service line materials to the customers Garrettsville serves.

Public Service Line Lead Probability Parcel Based		
Possibility of Lead	Public Lines #	% of System
Non Lead	636	64.5%
Moderate Probability	349	35.5%

Private Service Line Lead Probability Parcel Based		
Possibility of Lead	Private #	% of System
Non-Lead	985	100%

Distribution System

Within the distribution system, none of the pipes themselves are known to contain any lead, however, there may be joints, valves, and fittings within the system that may contain lead on some of the older mains. The Village passed an ordinance in 1964 stating lead was no longer to be used as any type service line material.

The Village has had three recent water meter change-outs. In the years between 1982-1986 and 2009 -2014 all the meters in the Village (residential, commercial, and industrial) were replaced by the water department. Between 1995-2000 industrial and commercial were replaced. During these change-outs no lead services detected on the residential (private) side of lateral line. Meters installed after 2014 will have less than 0.25% lead.

The Village of Garrettsville has approximately 21 miles of water main lines. The water system implemented in 1907. Mr. Sheehan has worked in the water department for approximately 37 years and has overseen the meter replacements.

Indoor Plumbing

Buildings in Ohio built prior to 1998 or that use plumbing material or solder manufactured before 1998 may have materials with greater than 8% lead and are at a higher risk of contributing lead to the drinking water than materials manufactured after 1998.

Buildings built and plumbing materials manufactured after 2014 were required to have less than 0.25% lead by weight and have the lowest risk for contributing lead to the drinking water. It should be noted however that, although prohibited, some use of leaded solder or leaded components may have occurred after the prohibitions became effective.

Customer Self-Reporting

The information on this map regarding privately owned service lines is based on the limited information from the water system staff and Portage County building and parcel data. Property owners are encouraged to inspect their own service lines entering the building if these are in anyway exposed, and notify the Village of Garrettsville Water Department if they have determined whether or not a lead service line exists. Please contact the Water Department by calling 330-527-2080 or sending an email to gvillewater@frontier.com. A representative from the water department will contact you to confirm and update this information for the next map release.

Contacts and Resources

If you have questions about known and potential lead components within the Village of Garrettsville Public Water System, please contact:

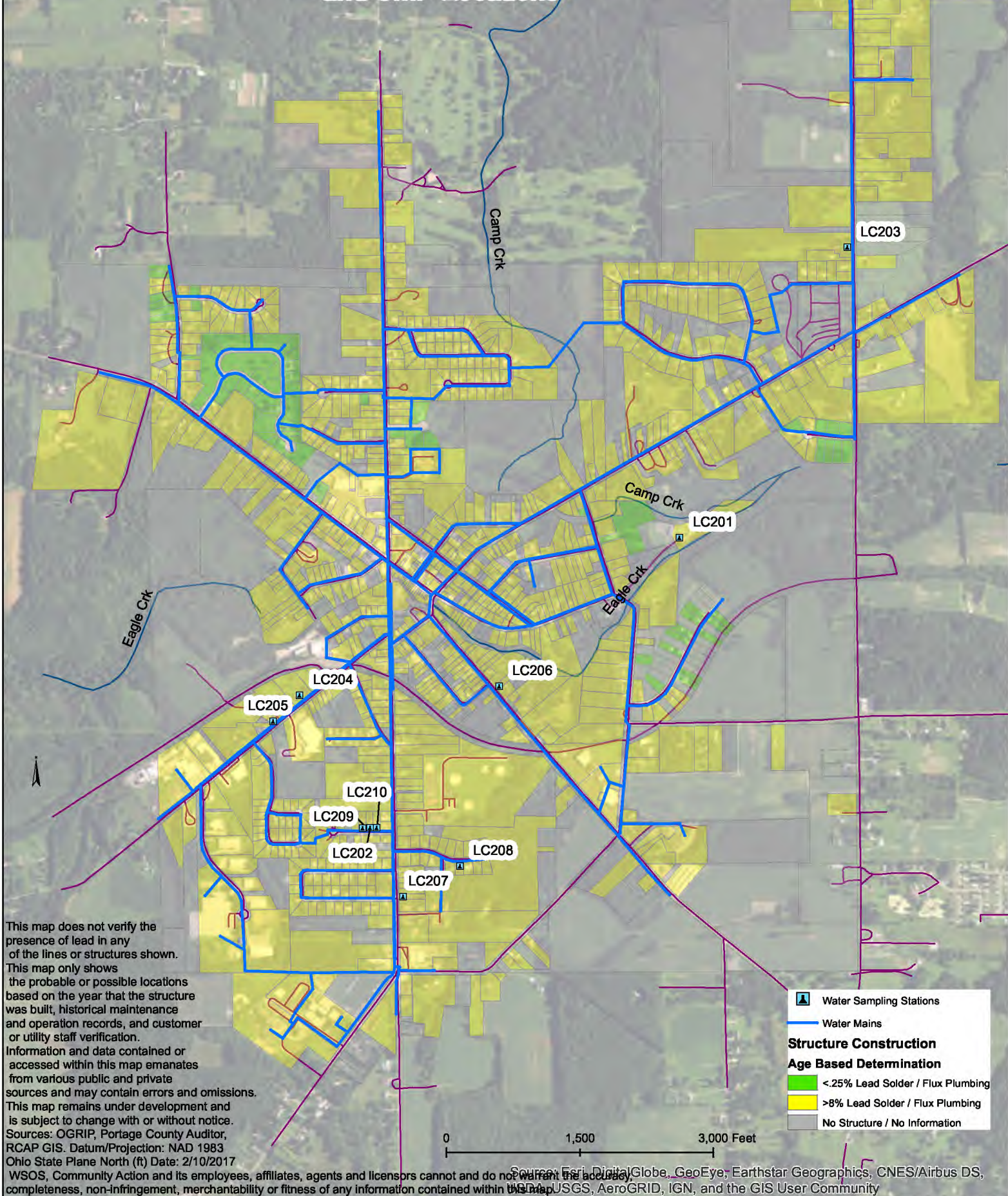
8213 High Street
PO Box 35
Garrettsville, Ohio 44231

For more information about lead service lines and their removal, we recommend the following resources:

- **The Lead Service Line Replacement Collaborative**
<http://www.lslr-collaborative.org/resources-for-concerned-consumers.html>
- **Ohio EPA 'Learn About Lead' page**
<http://epa.ohio.gov/pic/lead.aspx>
- **US EPA Lead in Drinking Water Information Page**
<https://www.epa.gov/ground-water-and-drinking-water/basic-information-about-lead-drinking-water>

Garrettsville Water Distribution PWS OH6701412

Lead Solder and Flux Locations Based on Structure Age and SMP Locations



Garrettsville Water Distribution PWS OH6701412

Lead Service Probability

