

The water system for the Ohio Edison Kent Line Shop building located at 4238 Newcomer road in Stow Ohio starts at the private well. The water is pumped thru a copper service line via a constant velocity pump. The water is then distributed thru soldered copper piping with brass valves throughout the facility to brass faucets, and connected to toilets with plastic anti syphon fill valves.

The building was constructed in the year 1971 or 1972 therefor the solder and the brass valves and faucets may contain lead.

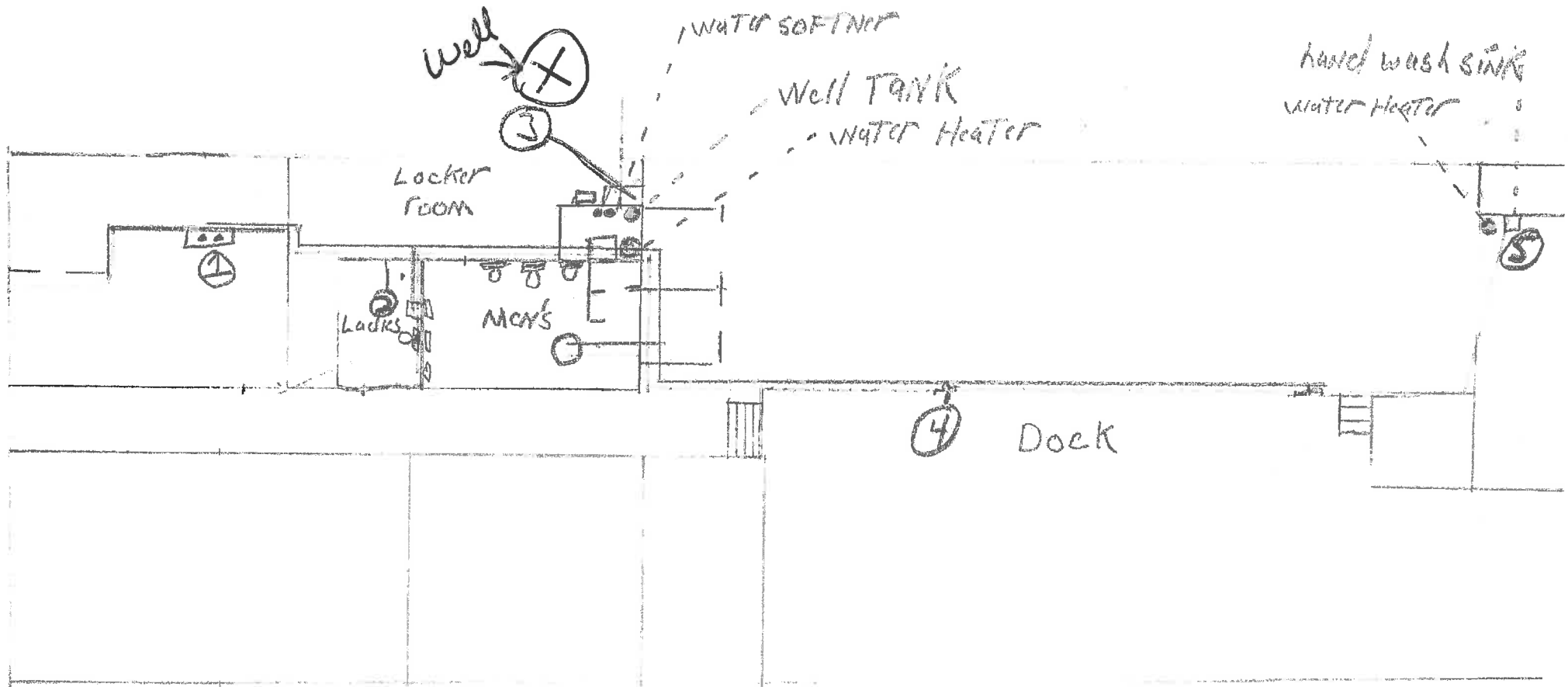
TO: Ohio EPA

From: Michael Gordon, Ohio Edison; REC.
cell phone 724-730-1739

The attached four pages show the Lead Mapping for Ohio Edison Kent Line Shop Facility

PWSID: OH 7785312.

These four pages make OE Kent Line Shop compliant with HB 512



NOT DRAWN TO SCALE

--- COLD WATER

— HOT WATER

Tap #1 KITCHEN SINK

Tap #2 Ladies Lavatory

Tap #3 Boot Wash Sink

Tap #4 Mixing Faucet

Tap #5 Mechanics hand wash sink