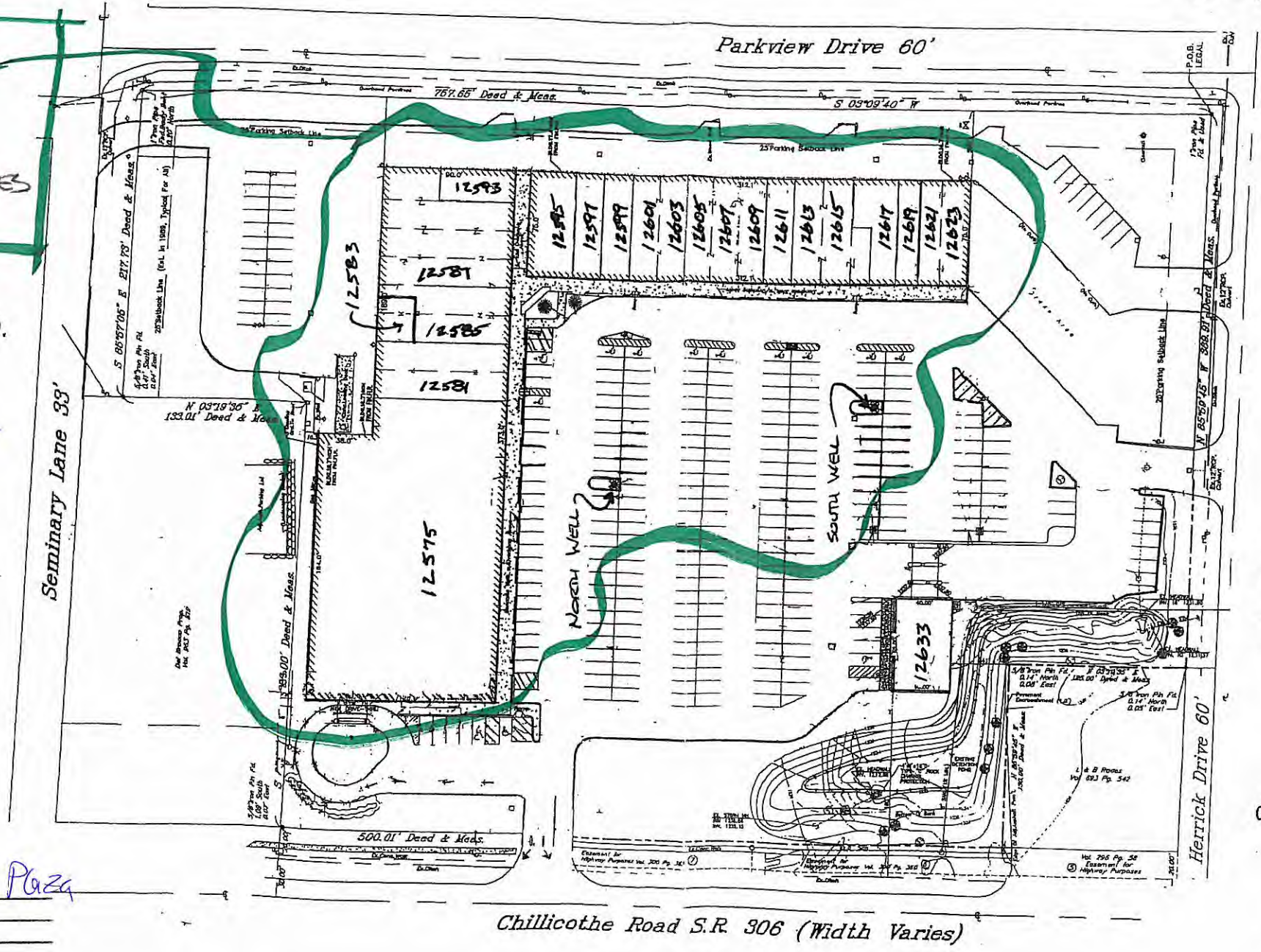


OH 2856712
 BUILDING BUILT
 AFTER 1989
 PLASTIC MAINS
 COPPER SERVICE LINES

CONSOLIDATED INVESTMENT CORP.
 8 North State Street, #420
 Painesville, Ohio 44077

Willy PROP. MGR
 2-17-2017



CHESTER SQUARE
 12575 - 12633 CHILICOTHE RD.
 CHESTERLAND, OHIO
 44026

CONSOLIDATED INVESTMENT CORP.
 8 North State Street, #420
 Painesville, Ohio 44077
 440 - 357-1900

Entity: Chester Square Plaza
 Doc Type: Report
 Doc Subtype: _____
 Program: DDAW
 County: Crawford
 Secondary ID: OH 2856712
epc, in color

REV: 2-15-2017