

Steubenville, Ohio

Public Water System Lead (Pb) Components

PWSID# OH4102411

Prepared February 2017

To comply with Section 6109.21 of the Ohio Revised Code, enacted in September 2016, the City of Steubenville in Jefferson County, Ohio has created the following report and attached map to identify known and potential components of water service lines that contain lead (Pb).

The following information and attached map do not verify the presence of lead in any of the plumbing components or structures shown. The information and map only show the probable or possible locations based on the year that structures were built, or by the year that the plumbing component was installed.

RCAP staff and the City of Steubenville Water Department met on February 16, 2017 to review a map of the service area. No applicable historical maintenance and operation records, tap cards, or as-builts were available to identify lead component locations. Locations where lead service components have been replaced, and locations where lead components are likely still being used, were identified by the City of Steubenville Water Department and recorded in a GIS database.

The digital maps provided depicts the parcels the public water serves, possible locations that may contain lead materials, and residential structure plumbing that may contain lead solder and flux based on structure construction date. The map has been divided up in zones based on historical city expansion. It may be noted the City of Steubenville does not own any lead service lines in the water system. There is a low to high probability that some of the older infrastructure may or may not contain a lead service connections on the residential side of the water main.

Public and Private Ownership of Service Lines

The City of Steubenville has approximately 14002 parcels within the city boundaries. The City does not own any portion of the lateral line. The private service lines identified as low to high probability is based on the age of the infrastructure and location within the city.

The tables below provides information about the possibility of residential lead service lines within the City of Steubenville

Private Service Line Lead Probability		
Possibility of Lead	Private #	% of System
Very Low Probability	3745	27.8%
Moderate Probability	4508	33.5%
High Probability	5203	38.7%

Distribution System

Within the distribution system, none of the pipes themselves are known to contain any lead, however, there may be joints, valves, and fittings within the system that may contain lead on some of the older mains. Meters installed after 2014 will have less than 0.25% lead.

The city map has been divided up into 3 zones:

Area # 1 is the Downtown Low and High area. The Low is piggy backed off the high at Adams Street, and feeds the same area, with lower pressure than the Downtown High system. On some streets, there are two mains. One is Downtown High, and the other Downtown Low. High is directly from the clear well at the WTP, the low is from the Adams Street Tank, which is fed from the clear well, but via an altitude valve, causes lower pressure by removing some head from the equation.

Area # 2 is the Labelle System, which is fed from the Golf Course and Maryland Ave tanks. These tanks are filled via the Labelle pumps at the WTP, which get their suction from the clear well.

Area # 3 is the West End System. The tank in this area is filled via the West End Pumps at the WTP, which get their suction from the clear well.

In Steubenville, a chemical (orthophosphate) is fed to coat the lines so that the water does not contact the pipe. This is what is referred to as Steubenville's "Corrosion Control Technique". Since the water does not directly contact the pipe, no pipe material can leach into the water.

The City of Steubenville has approximately 91.2 miles of water main lines. The water system implemented in the early 1900's. Mr. Disch has worked in water systems for 39 years, and has been working with Steubenville for the past 2 years.

Indoor Plumbing

Buildings in Ohio built prior to 1998 or that use plumbing material or solder manufactured before 1998 may have materials with greater than 8% lead and are at a higher risk of contributing lead to the drinking water than materials manufactured after 1998.

Buildings built and plumbing materials manufactured after 2014 were required to have less than 0.25% lead by weight and have the lowest risk for contributing lead to the drinking water. It should be noted however that, although prohibited, some use of leaded solder or leaded components may have occurred after the prohibitions became effective.

Customer Self-Reporting

The information on this map regarding privately owned service lines is based on the limited information from the water system staff and Jefferson County building and parcel data. Property owners are encouraged to inspect their own service lines entering the building if these are in anyway exposed. Please contact The City of Steubenville Water Department by calling 740-283-6041 or email bdisch@cityofsteubenville.us. The map and dataset will be updated approximately every 5 years.

Contacts and Resources

If you have questions about known and potential lead components within the City of Steubenville Water Department, please contact:

City of Steubenville Water Department
1565 University Blvd
Steubenville Ohio 43952

For more information about lead service lines and their removal, we recommend the following resources:

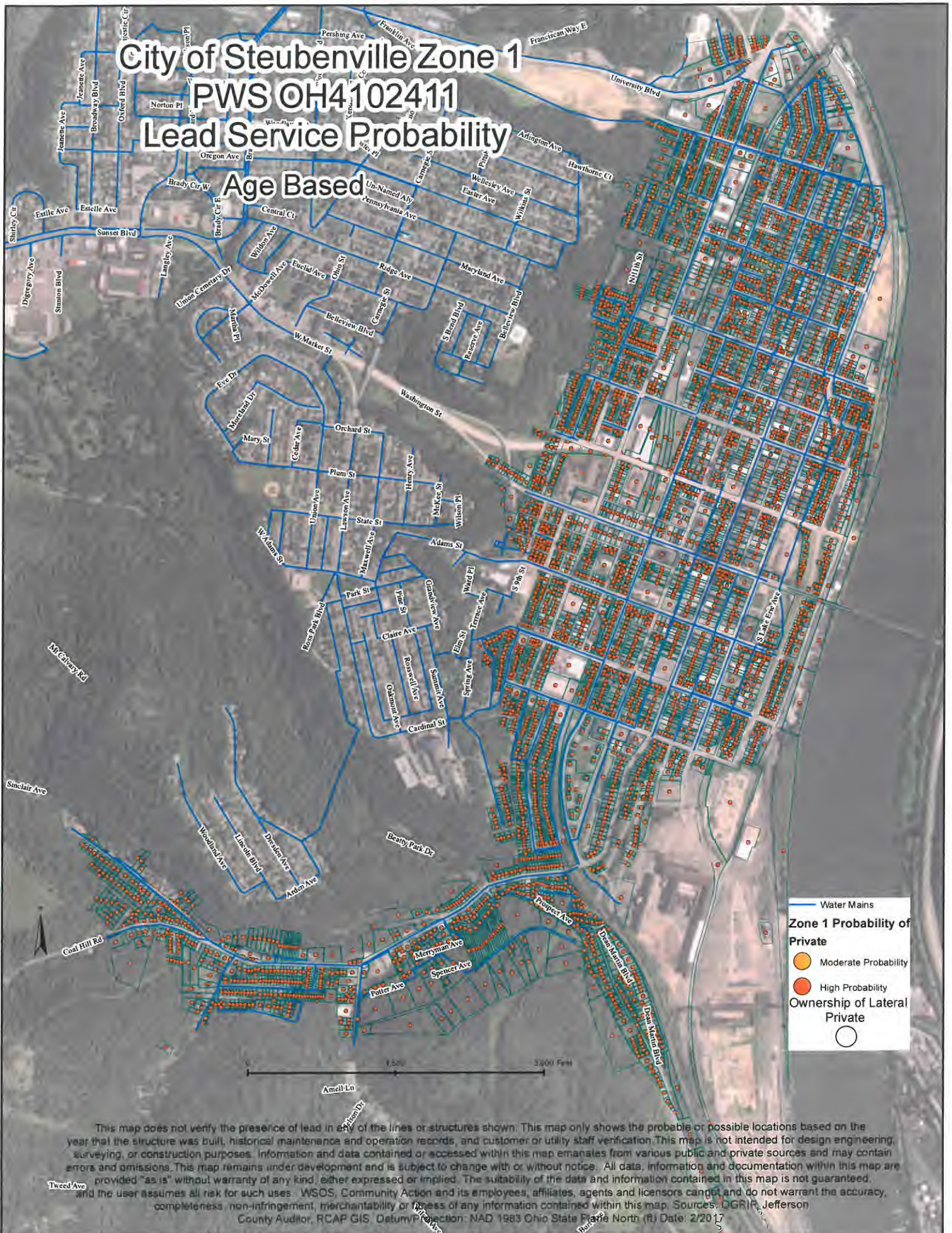
- **The Lead Service Line Replacement Collaborative**
<http://www.lslr-collaborative.org/resources-for-concerned-consumers.html>
- **Ohio EPA 'Learn About Lead' page**
<http://epa.ohio.gov/pic/lead.aspx>
- **US EPA Lead in Drinking Water Information Page**
<https://www.epa.gov/ground-water-and-drinking-water/basic-information-about-lead-drinking-water>

City of Steubenville Zone 1

PWS OH4102411

Lead Service Probability

Age Based

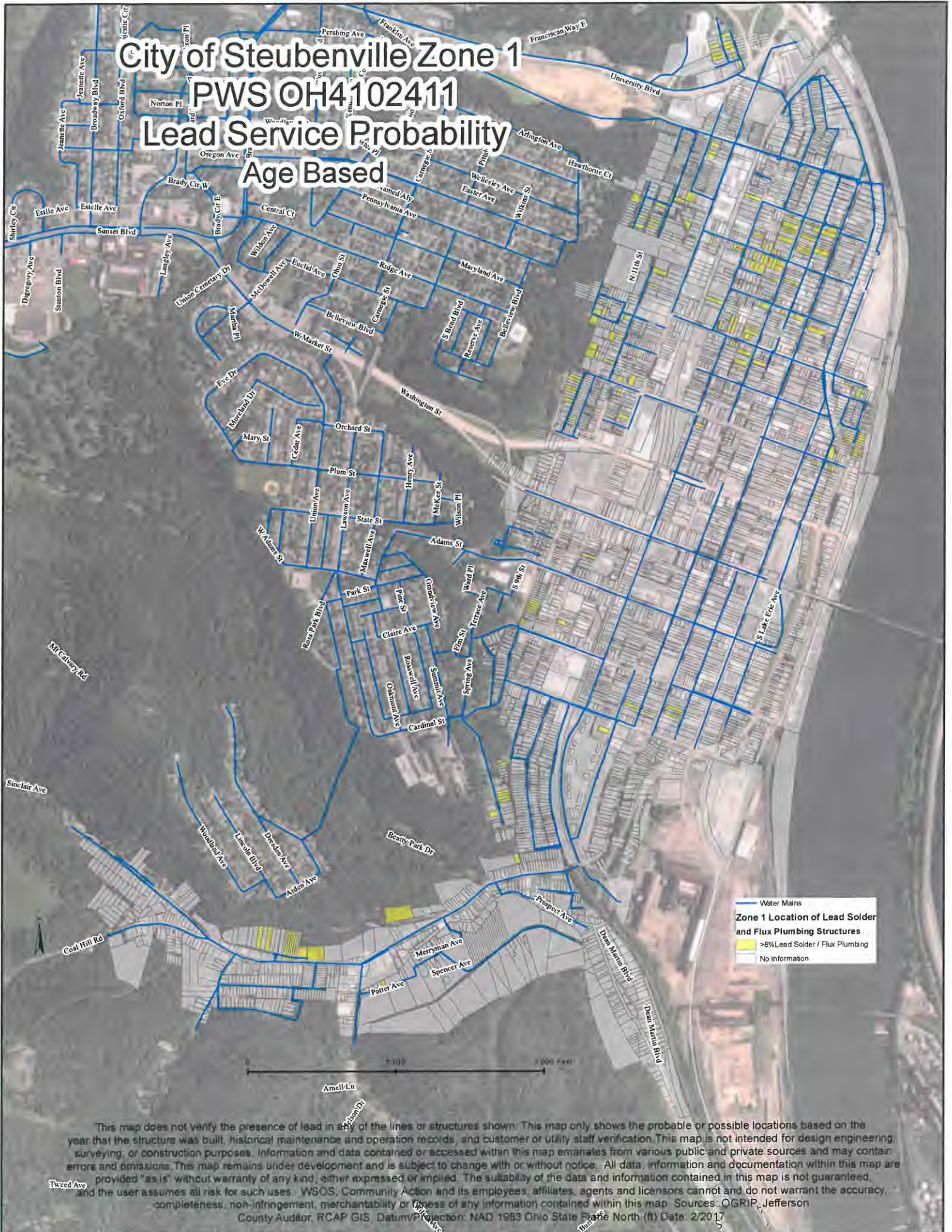


City of Steubenville Zone 1

PWS OH4102411

Lead Service Probability

Age Based



City of Steubenville Zone 2

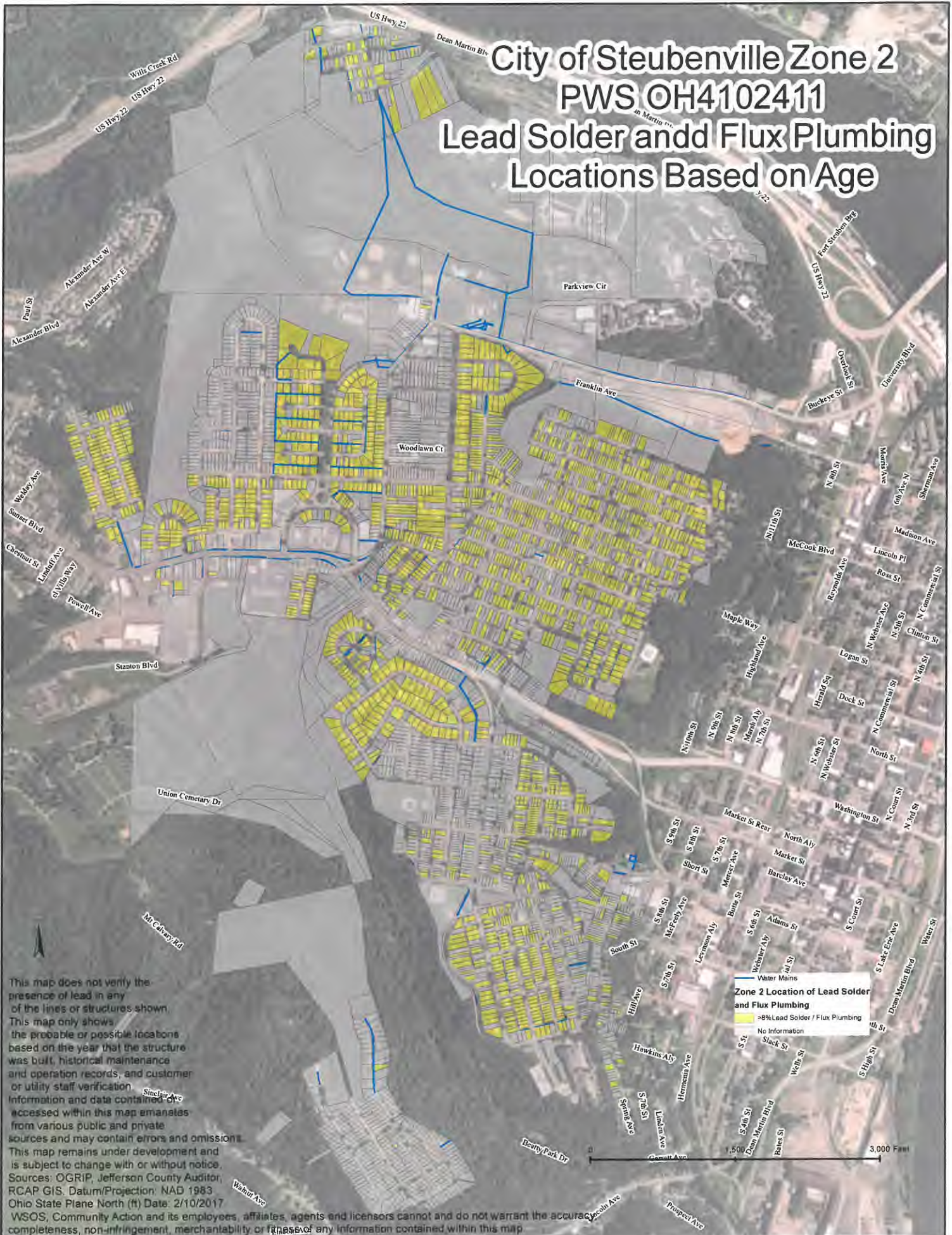
PWS OH4102411

Lead Service Probability

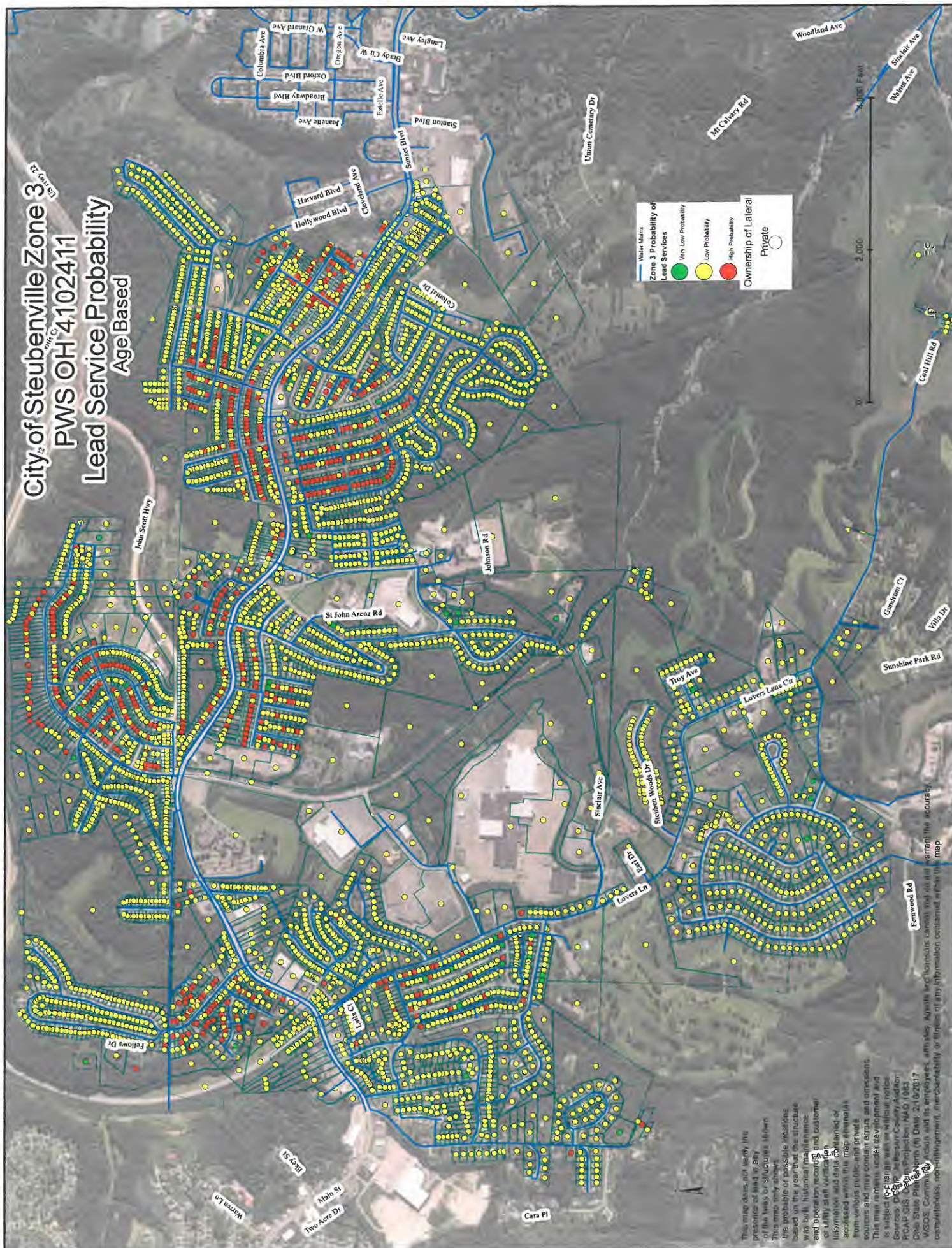
Age Based



City of Steubenville Zone 2 PWS OH4102411 Lead Solder and Flux Plumbing Locations Based on Age



City of Steubenville Zone 3
PWS OH 4102411
Lead Service Probability
Age Based



Lead Solder and Flux Plumbing Structures

