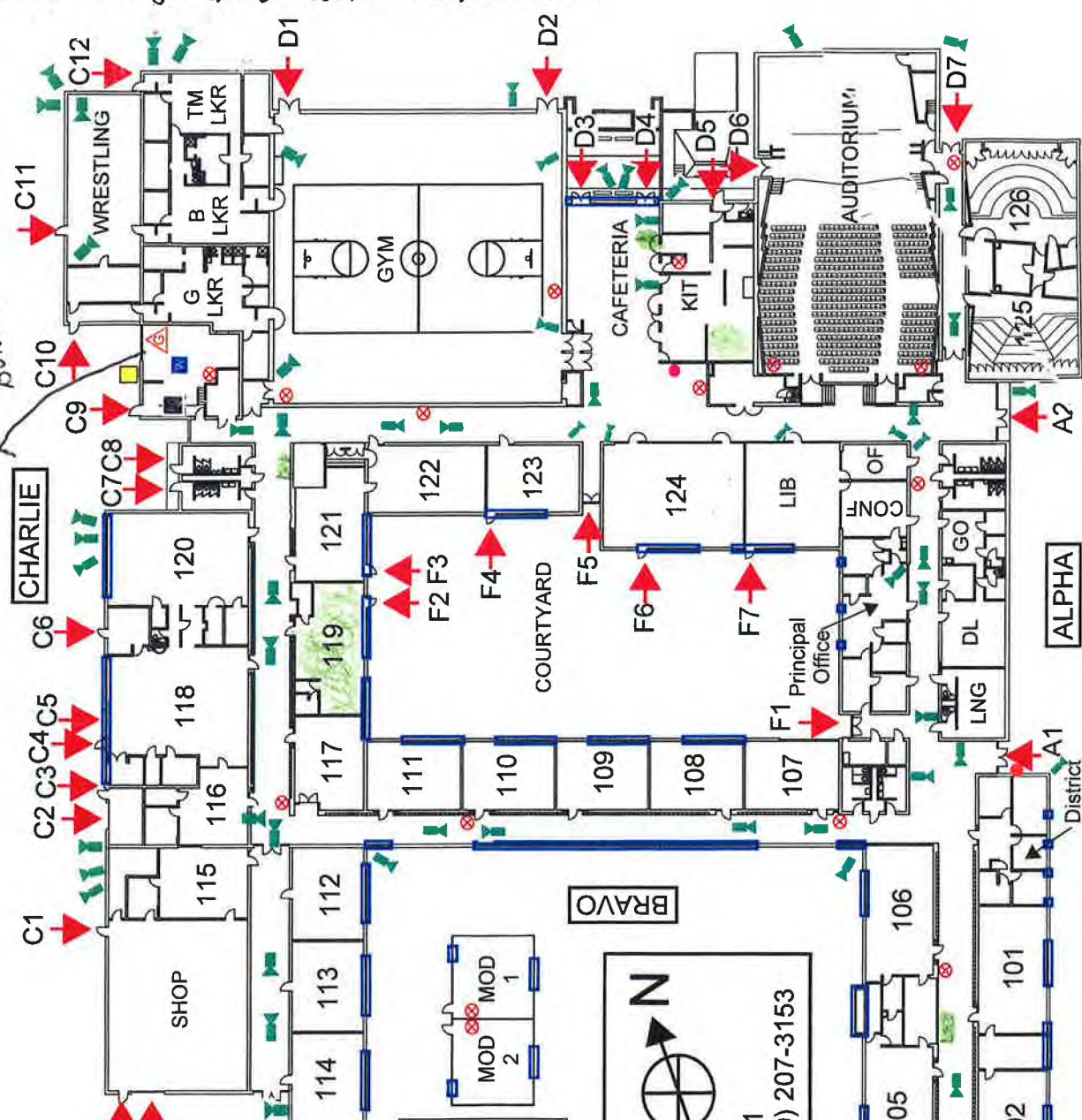


STATE ROUTE 56

PWS ID OH6542712

Type NONRESIDENT NON COMMUNITY DELTA
CONTACT ERIC GILLISPIE
Phone 740 207 3153
Email ericgillispie@westfallschools.com

To water buildings
TV-campbell
pvc install 2006



- Legend: Sample Sites
- Door
 - Door Label
 - Window
 - Security Camera
 - Fire Alarm Pull
 - Fire Extinguisher
 - Gas Shut Off
 - A.E.D.
 - Water Shut Off
 - Electric Shut Off
 - Backup Generator
 - Fire Alarm Control
 - Knox Box

BRAVO

Built 1964

Westfall High School
 IRN # 040683
 19463 Pherson Pike
 Williamsport, OH 43164
 School Phone: (740) 986-2911
 Emergency Maintenance (740) 207-3153

Building Built 1964
 Using Copper Likely
 To contain Lead
 Solder + Fixtures
 Pipe
 From water building
 D: ST: Distribution copper

ALPHA

PERSON PIKE

District Office

A1

LNG

DL

GO

CONF

LIB

124

123

122

121

120

119

118

117

116

115

114

113

112

111

110

109

108

107

106

105

104

103

102

101

100

99

98

97

96

95

94

93

92

91

90

89

88

87

86

85

84

83

82

81

80

79

78

77

76

75

74

73

72

71

70

69

68

67

66

65

64

63

62

61

60

59

58

57

56

55

54

53

52

51

50

49

48

47

46

45

44

43

42

41

40

39

38

37

36

35

34

33

32

31

30

29

28

27

26

25

24

23

22

21

20

19

18

17

16

15

14

13

12

11

10

9

8

7

6

5

4

3

2

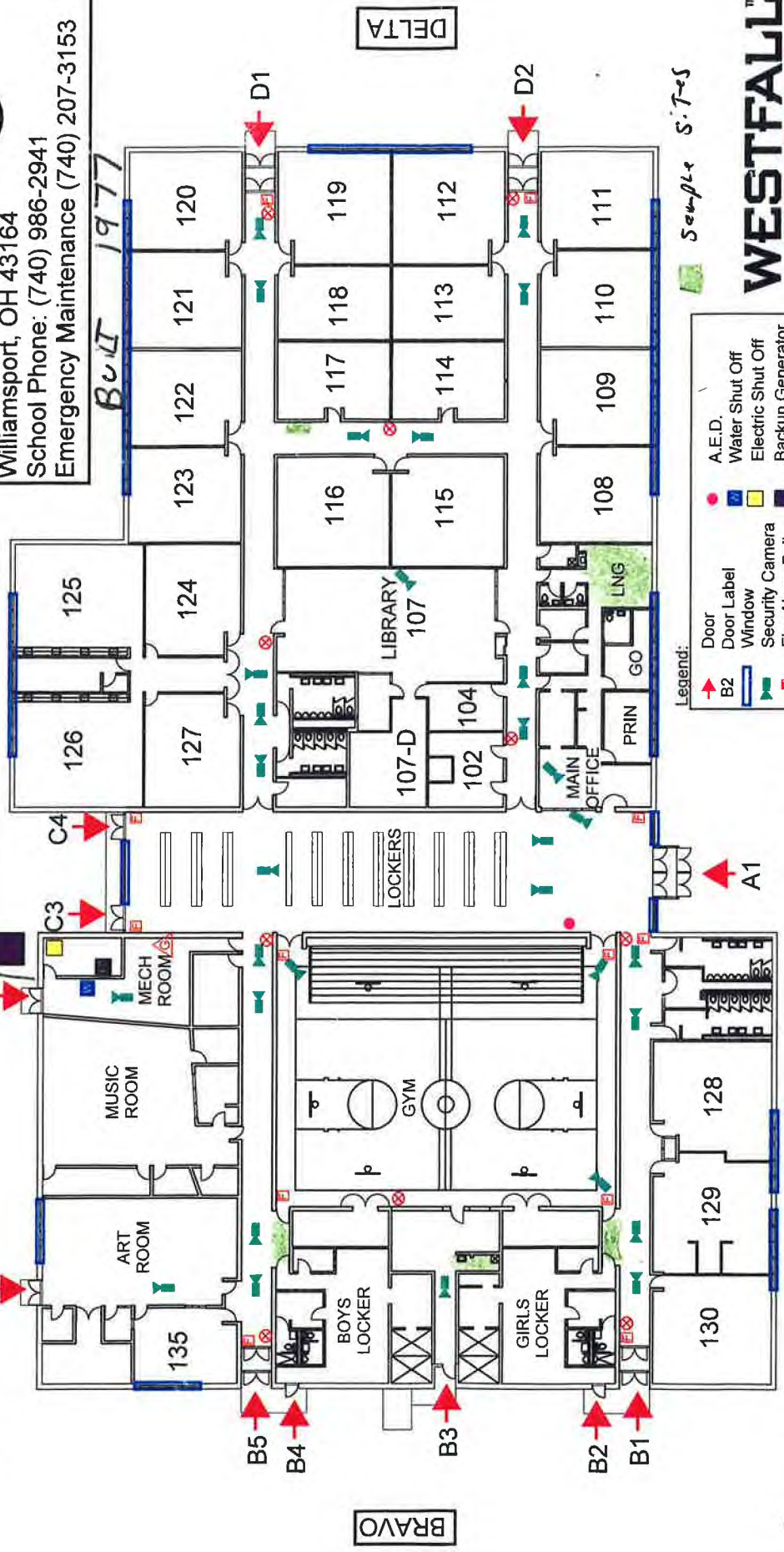
1

0

Building Built in 1977 using Copper
Likely to contain Lead Solder
and FITURES The Service Line
INSTALL 2006 C1

To water
to PVC
to PVC
to PVC
to PVC

Westfall Middle School
IRN # 064196
19545 Pherson Pike
Williamsport, OH 43164
School Phone: (740) 986-2941
Emergency Maintenance (740) 207-3153



Sample S.T-5

- Legend:
- Door
 - Door Label
 - Window
 - Security Camera
 - Fire Alarm Pull
 - Fire Extinguisher
 - Gas Shut Off
 - A.E.D.
 - Water Shut Off
 - Electric Shut Off
 - Backup Generator
 - Fire Alarm Control

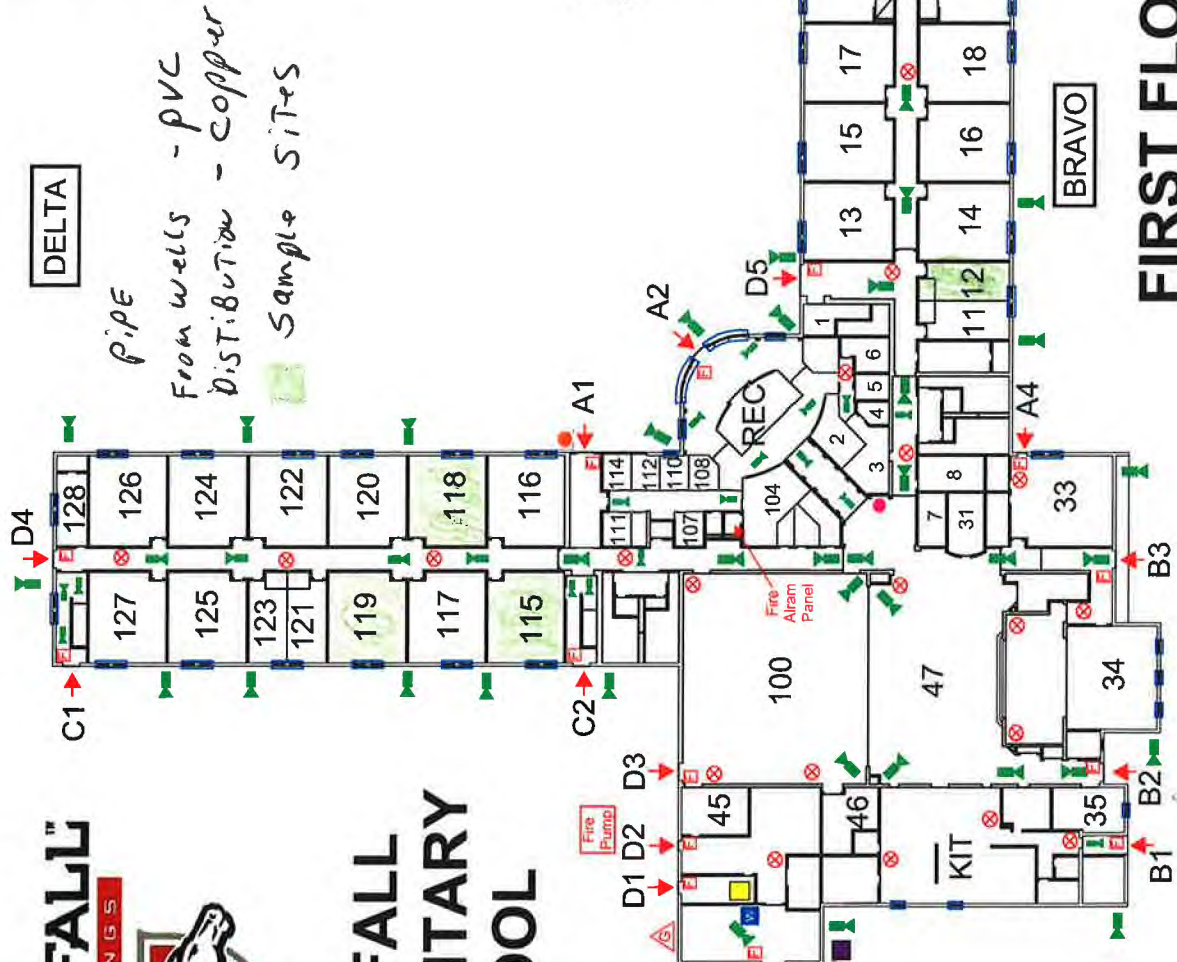
PWS IO OH6542712
TYPE NONTRASMIT NONCOMMUNITY
CONTACT ERIC GILLISPIE
Phone 740-207-3153
Email eric.gillispie@westfallschools.com

New water Treatment BUILT 2006
New wells & Lines PVC 2006

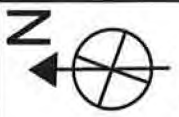
PERSON PIKE



WESTFALL ELEMENTARY SCHOOL



Westfall Elementary School
 IRN # 146209
 9391 Ohio Route 56
 Williamsport, OH 43164
 School Phone: (740) 986-4008
 Emergency Maintenance (740) 207-3153



Legend: **BUILT 2001**

Door	A.E.D.
Door Label	Water Shut Off
Window	Electric Shut Off
Security Camera	Backup Generator
Fire Alarm Pull	Fire Alarm Control
Fire Extinguisher	Knox Box
Gas Shut Off	

DELTA

From wells - pvc distribution - copper Sample sites

ALPHA

*pws name westfall elementary
 pws id 04656092
 Type of System Nontransient
 CONTACT ERIC GILLISPIE
 phone 740-207-3153
 Email eric.gillispi@westfall.k12.oh.us*

STATE ROUTE 56

FIRST FLOOR

CHARLIE

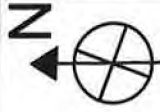
To The Wells Pipe



WESTFALL ELEMENTARY SCHOOL

DELTA

Westfall Elementary School
 IRN # 146209
 9391 Ohio Route 56
 Williamsport, OH 43164
 School Phone: (740) 986-4008
 Emergency Maintenance (740) 207-3153

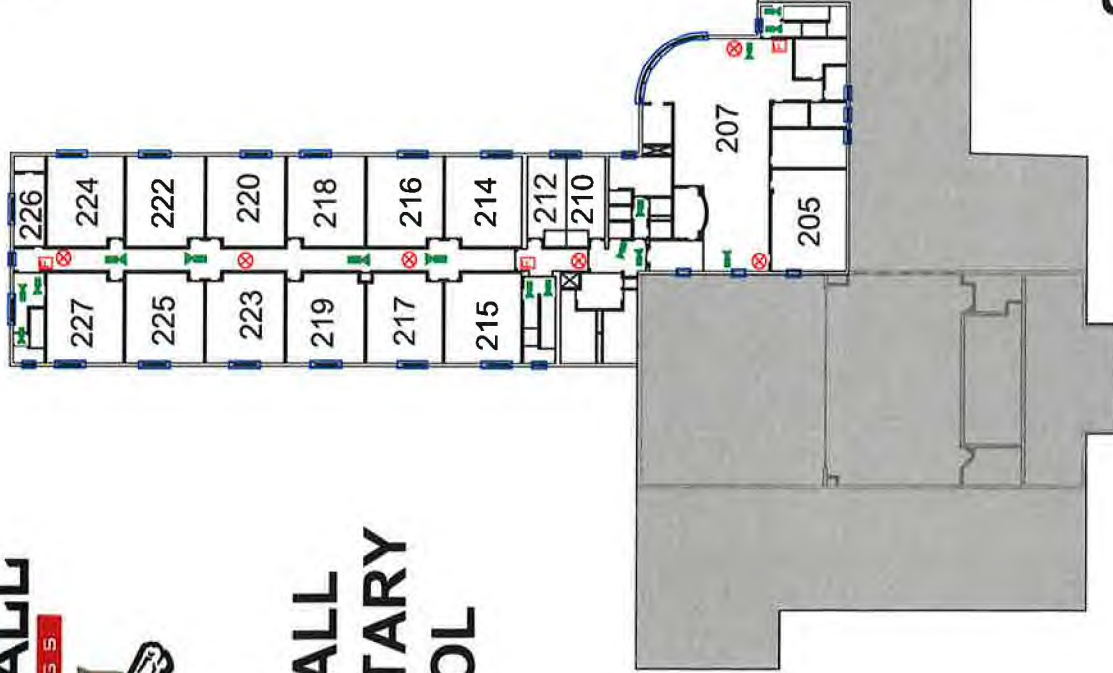


Legend:

	Door		A.E.D.
	Door Label		Water Shut Off
	Window		Electric Shut Off
	Security Camera		Backup Generator
	Fire Alarm Pull		Fire Alarm Control
	Fire Extinguisher		Knox Box
	Gas Shut Off		

STATE ROUTE 56

ALPHA



BRAVO

SECOND FLOOR

CHARLIE