

GUERNSEY COUNTY WATER AND SEWER DEPARTMENT

Sewer District #100

11272 East Pike
Cambridge, Ohio 43725-8938
Telephone 740-439-1269
Fax 740-439-5775

Jeffrey Alfman
Superintendent

3/2/17

Ohio EPA – Southeast District Office
Michael Carper
2195 Front St
Logan, OH 43138

Ms. Carper,

RECEIVED
MAR. 6 2017
Ohio Environmental
Protection Agency
Southeast District

Enclosed is the map as required by Ohio EPA for lead mapping of our distribution system.

Buildings in Ohio built prior to 1998 or that use plumbing material or solder manufactured before 1998 may have materials with greater than 8% lead and are at a higher risk of contributing lead to the drinking water than materials manufactured after 1998. In addition, buildings built and plumbing materials manufactured after 2014 were required to have less than 0.25% lead by weight and have the lowest risk for contributing lead to the drinking water. It should be noted however that, although prohibited, some use of leaded solder or leaded components may have occurred after the prohibitions became effective.

The Guernsey County Water Department has never used lead service lines in our system. We have verified this with our tapping and leak reports from 1973 to present. The County did use copper service lines between the years of 1989-2001. The connections on the copper service lines were never sweated. The connections were made by flaring or compression pack nuts.

The only new sub-divisions which only have building built after the 1998 ban are listed below:

1. Sienna Woods
2. Woodlands
3. Belhaven
4. Stone Crest
5. Willow Springs
6. Washington Estates

All the other areas of our water system have dwellings built before and after the ban. Since we do not know which dwellings would be copper plumbed before 1998, they would have to be marked 'possible'.

The enclosed list of sampling sites for lead and copper are also reflected on the map.

If you have any questions, feel free to contact me.

Sincerely,

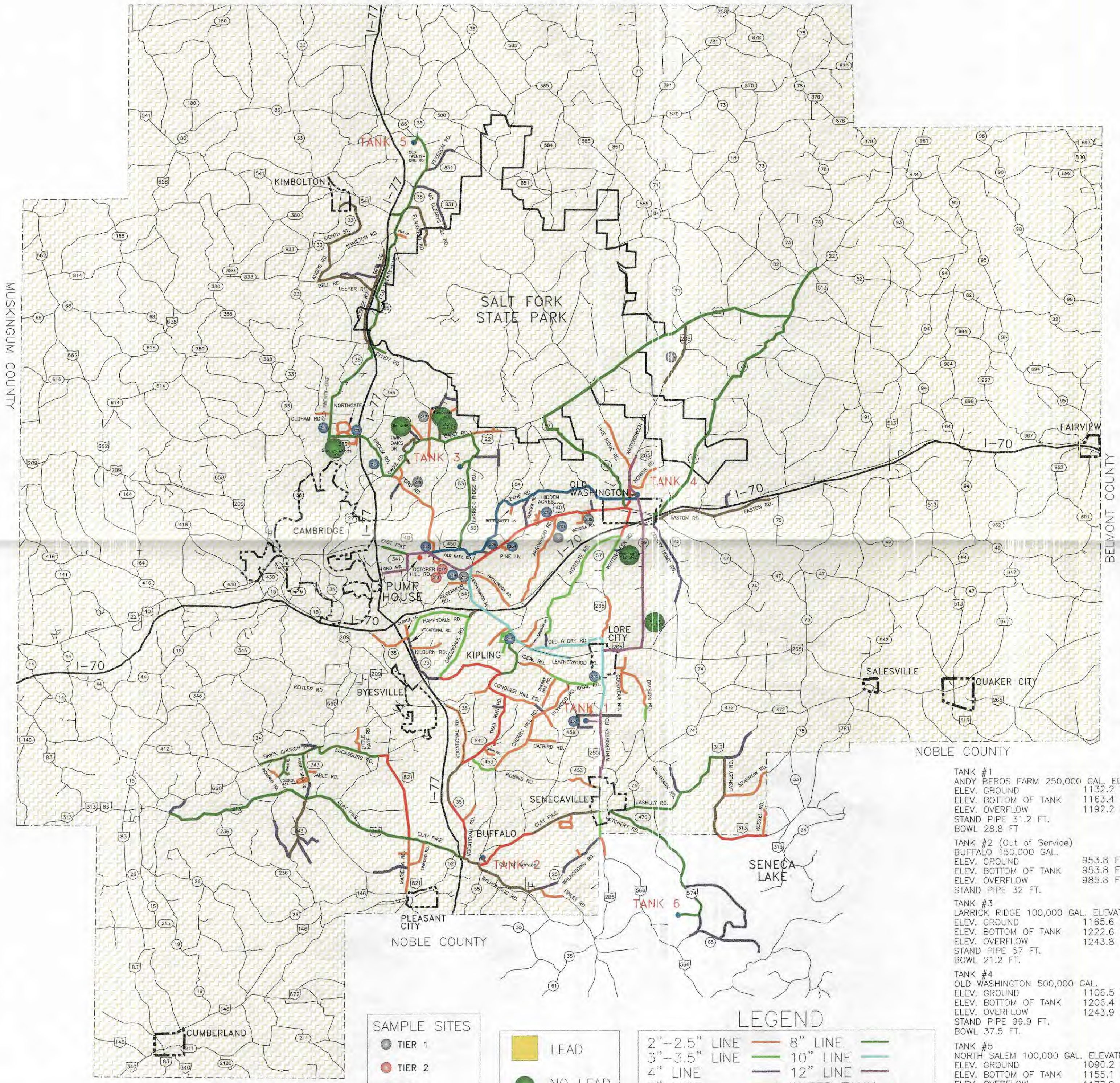
A handwritten signature in black ink, appearing to read "Jeffrey Alfman", with a long horizontal flourish extending to the right.

Jeffrey Alfman
Superintendent

cc: Ohio Department of Health ATTN: Lead Program, 6th Floor, 246 North High Street, Columbus,
OH 43215

Ohio Department of Job and Family Services, Office of Family Assistance-Bureau of Child Care
Licensing and Monitoring, P O Box 183204, Columbus, OH 43218-3204

GUERNSEY COUNTY WATER DEPARTMENT



SAMPLE SITES

●	TIER 1
●	TIER 2
●	TIER 3

■	LEAD
●	NO LEAD

LEGEND

2"-2.5" LINE	8" LINE
3"-3.5" LINE	10" LINE
4" LINE	12" LINE
5" LINE	WATER TANK
6" LINE	PUMP HOUSE
STATE HIGHWAYS	16" LINE
COUNTY ROADS	
U.S. HIGHWAYS	

TANK #1	ANDY BEROS FARM 250,000 GAL. ELEVATED
	ELEV. GROUND 1132.2 FT.
	ELEV. BOTTOM OF TANK 1163.4 FT.
	ELEV. OVERFLOW 1192.2 FT.
	STAND PIPE 31.2 FT.
	BOWL 28.8 FT.
TANK #2 (Out of Service)	BUFFALO 150,000 GAL.
	ELEV. GROUND 953.8 FT.
	ELEV. BOTTOM OF TANK 953.8 FT.
	ELEV. OVERFLOW 985.8 FT.
	STAND PIPE 32 FT.
TANK #3	LARRICK RIDGE 100,000 GAL. ELEVATED
	ELEV. GROUND 1165.6 FT.
	ELEV. BOTTOM OF TANK 1222.6 FT.
	ELEV. OVERFLOW 1243.8 FT.
	STAND PIPE 57 FT.
	BOWL 21.2 FT.
TANK #4	OLD WASHINGTON 500,000 GAL.
	ELEV. GROUND 1106.5 FT.
	ELEV. BOTTOM OF TANK 1206.4 FT.
	ELEV. OVERFLOW 1243.9 FT.
	STAND PIPE 39.9 FT.
	BOWL 37.5 FT.
TANK #5	NORTH SALEM 100,000 GAL. ELEVATED
	ELEV. GROUND 1090.2 FT.
	ELEV. BOTTOM OF TANK 1155.1 FT.
	ELEV. OVERFLOW 1177.9 FT.
	STAND PIPE 55 FT.
TANK #6	BUFFALO HILLS 500,000 GAL. STAND PIPE
	ELEV. GROUND 1191.2 FT.
	ELEV. BOTTOM OF TANK 1191.2 FT.
	ELEV. OVERFLOW 1246.2 FT.
	STAND PIPE 55 FT.
	PUMP HOUSE - 800