

Geneva, Ohio

Public Water System Lead (Pb) Components

PWSID# OH0401712
Prepared March 2, 2017

To comply with Section 6109.21 of the Ohio Revised Code, enacted in September 2016, the City of Geneva in Ashtabula County, Ohio has created the following report and attached map to identify known and potential components of water service lines that contain lead (Pb).

The following information and attached map do not verify the presence of lead in any of the plumbing components or structures shown. The information and map only show the probable or possible locations based on the year that structures were built, or by the year that the plumbing component was installed.

RCAP staff and the City of Geneva Water Department met on March 2, 2017 to review a map of the service area. No applicable historical maintenance and operation records, tap cards, or as-builts were available to identify lead component locations. Locations where lead service components have been replaced, and locations where lead components are likely still being used, were identified by the City of Geneva Water Department and recorded in a GIS database.

The digital maps provided depicts the parcels the public water system serves, possible locations that may contain lead materials, and residential structure plumbing that may contain lead solder and flux based on structure construction date. There is a moderate probability that some of the older infrastructure may or may not contain a lead service connection on the public water side of the distribution system.

Public and Private Ownership of Service Lines

The City of Geneva distributes water to approximately 2281 out of 2845 parcels. The City owns and maintains service lines from the water distribution mains up to the curb stops for each water customer. The remainder of each service line from the curb stop to the building is the responsibility of the property owner. The public service lines that are identified as moderate probability is based on the material and age of the infrastructure.

The tables below provide information about the possibility of lead service line materials to the customers Geneva serves. The age of the infrastructure, replacement projects, and pipe material determines which category it falls into.

Public Service Line Lead Probability		
Possibility of Lead	Public Lines #	% of System
Non Lead	1302	57%
Moderate Probability	979	43%

Private Service Line Lead Probability		
Possibility of Lead	Private #	% of System
Non-Lead	2281	100%

Distribution System

Within the distribution system, none of the main lines themselves are known to contain any lead, however, there may be joints, valves, and fittings within the system that may contain lead on some of the older mains.

From February 1 2016 through November 1 2016, the City replaced approximately 1900 out of 2450 residential (private) meters within the system. The meters were replaced with Neptune brass meters which comply with lead free standards. There were no Lead services detected on the residential (private) side of lateral line. Meters installed after 2014 will have less than 0.25% lead.

The City of Geneva has approximately 36.4 miles of water main lines. The water system was implemented in the early 1900's. Mr. Gilbert has worked for the water distribution department for approximately 12 years and has overseen the meter replacements and repair work within the system.

The City of Geneva Ohio was incorporated as a Village in June of 1866, then a City in 1958. The Village and then the City operated its own water treatment and distribution systems until the early 1960's when they sold it to (now) Aqua Ohio. The City reacquired the distribution system within city limits in 2004.

The City of Geneva's water main material specs consist of either Ductile Iron Pipe (DIP) or plastic (C-909) water mains. Current specifications for service lines require 1" type "K" copper for new construction. The City has recently allowed plastic service lines for the repair or replacement of existing service lines. In the past the use of lead "goose necks" (which is a short section of lead line approximately 1.5' long attached to the cast iron water mains) was common and were connected to a galvanized pipe. Through the '80's Aqua Ohio targeted locating and removing these lead "goose necks". The City of Geneva Water Department occasionally comes across one of these lead connections, and as part of the Standard Operating Procedures (SOP) it is eliminated immediately.

Indoor Plumbing

Buildings in Ohio built prior to 1998 or that use plumbing material or solder manufactured before 1998 may have materials with greater than 8% lead and are at a higher risk of contributing lead to the drinking water than materials manufactured after 1998.

Buildings built and plumbing materials manufactured after 2014 were required to have less than 0.25% lead by weight and have the lowest risk for contributing lead to the drinking water. It should be noted however that, although prohibited, some use of leaded solder or leaded components may have occurred after the prohibitions became effective.

Customer Self-Reporting

The information on this map regarding privately owned service lines is based on the limited information from the water system staff and Ashtabula County building and parcel data. Property owners are encouraged to inspect their own service lines entering the building if these are in anyway exposed, and notify the City of Geneva Water Department if they have determined whether or not a lead service line exists. Please contact the Water Department by calling 440-466-4549 or sending an email to waterworks@genevaohio.gov. A representative from the water department will contact you to confirm and update this information for the next map release.

Contacts and Resources

If you have questions about known and potential lead components within the City of Geneva Public Water System, please contact:

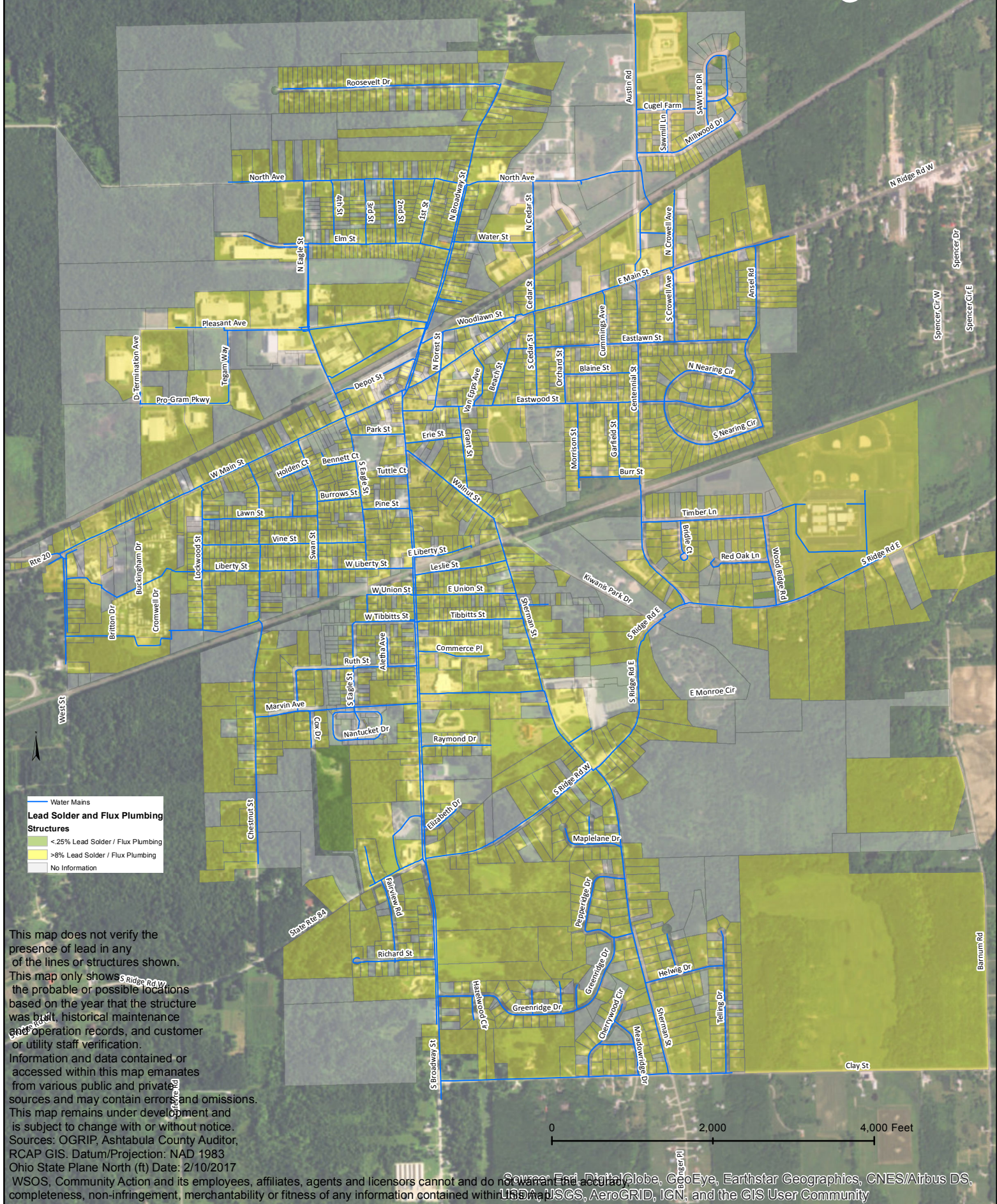
David Gilbert
44 North Forest
Geneva Ohio 44041

For more information about lead service lines and their removal, we recommend the following resources:

- **The Lead Service Line Replacement Collaborative**
<http://www.lslr-collaborative.org/resources-for-concerned-consumers.html>
- **Ohio EPA 'Learn About Lead' page**
<http://epa.ohio.gov/pic/lead.aspx>
- **US EPA Lead in Drinking Water Information Page**
<https://www.epa.gov/ground-water-and-drinking-water/basic-information-about-lead-drinking-water>

Geneva Water Distribution PWS OH0401712

Lead Solder and Flux Structures Based on Age



Geneva Water Distribution PWS OH0401712

Probability of Lead Service Lines

Water Mains

Probability of Lead Service Lines

- No Lead
- Moderate Probability Public Only
- Not Serviced
- No Information

Ownership of Lateral

Public Private

0 2,000 4,000 Feet

This map does not verify the presence of lead in any of the lines or structures shown. This map only shows the probable or possible locations, based on the year that the structure was built, historical maintenance, and operation records, and customer or utility staff verification. Information and data contained or accessed within this map emanates from various public and private sources and may contain errors and omissions. This map remains under development and is subject to change with or without notice. Sources: OGRIP, Ashland County Auditor, KGAAP GIS, Datum: Projection: NAD 1983, Ohio State Plane North (ft) Date: 2/10/2017. WSOS, Community Action and its employees, affiliates, agents and licensors cannot and do not warrant the accuracy, completeness, non-infringement, merchantability or fitness of any information contained within this map.

This map does not verify the presence of lead in any of the lines or structures shown. This map only shows the probable or possible locations, based on the year that the structure was built, historical maintenance and operation records, and customer or utility staff verification. Information and data contained or accessed within this map emanates from various public and private sources and may contain errors and omissions. This map remains under development and is subject to change with or without notice. Sources: CGPR, Asheville County Auditor, RCAP GIS, Datum/Projection: NAD 83, Ohio State Plane (N) Date: 2/10/2017 WSOB, Community Action and its employees, affiliates, agents and licensees cannot and do not warrant the accuracy of this information. For more information, please contact WSOB at info@wsob.com.

[illegible]