



Village of Leetonia, Ohio

Public Water System Lead (Pb) Components

PWSID# OH1501412

Prepared February 2017

To comply with Section 6109.21 of the Ohio Revised Code, enacted in December 2016, the Village of Leetonia in Columbiana County, Ohio has created the following report and attached map to identify known and potential components of water service lines that contain lead (Pb).

The following information and attached map do not verify the presence of lead in any of the plumbing components or structures shown. The information and map only show the probable or possible locations based on the year that structures were built, or by the year that the plumbing component was installed.

RCAP staff and the Village of Leetonia Water Department met on February 22 , 2017 to review a map of the service area. No applicable historical maintenance and operation records, tap cards, or as-builts were available to identify lead component locations. Locations where lead service components have been replaced, and locations where lead components are likely still being used, were identified by the Village of Leetonia Water Department and recorded in a GIS database.

The digital maps provided depicts the parcels the public water serves, possible locations that may contain lead materials, and residential structure plumbing that may contain lead solder and flux based on structure construction date. Village employees have discovered some lead service lines on the residential (Private) and on the Public side of the water system during meter replacement projects, through customer reporting and during repairs. There are high and moderate probabilities, and some confirmed locations where lead service lines exist on the public water side of the distribution system.

Public and Private Ownership of Service Lines

The Village of Leetonia Water Department distributes water to approximately 750 customers. There are 903 service lines throughout the Village and 1,715 parcels within its boundaries. The Village owns and maintains service lines from the water distribution mains up to the curb stop for each water customer. The remainder of each service line from the curb stop to the building is the responsibility of the property owner. The public service lines identified as moderate probability is based on the age of the infrastructure and or material of water main. Building ages from the Columbiana County Auditor's office were used to assign a probability if no other information was available.

The tables below provide information about the possibility of lead service line materials to the customers Leetonia serves.

Public Service Line Lead Probability		
Possibility of Lead	Public Lines #	% of System
Non Lead	429	47.5%
Moderate Probability	423	46.8%
High Probability	47	5.2%
Lead	1	.1%

Private Service Line Lead Probability		
Possibility of Lead	Private #	% of System
Non-Lead	429	47.5%
High Probability	9	1%
Moderate Probability	423	46.8%
Lead	1	.1%

Distribution System

The Village of Leetonia has approximately 20.9 miles of water main lines. The earliest parts of the water system are believed to have been installed in the late 1800's, and significant portions were installed in the 1920's. Mr. Donnalley, the Superintendent, has worked in the water department since 1975 and has overseen past meter replacements.

Within the distribution system, none of the pipes themselves are known to contain any lead, however, there may be joints, valves, and fittings within the system that may contain lead on some of the older mains. The Village passed by-laws in 1958 stating the water department would make the service taps and run copper tubing to the residence for the service line.

The Village is currently undergoing a meter replacement project, and its water department actively looks for lead services when they are connecting new meters. Meters installed after 2014 will have less than 0.25% lead.

Indoor Plumbing

Buildings in Ohio built prior to 1998 or that use plumbing material or solder manufactured before 1998 may have materials with greater than 8% lead and are at a higher risk of contributing lead to the drinking water than materials manufactured after 1998.

Buildings built and plumbing materials manufactured after 2014 were required to have less than 0.25% lead by weight and have the lowest risk for contributing lead to the drinking water. It should be noted however

that, although prohibited, some use of lead solder or leaded components may have occurred after the prohibitions became effective.

Customer Self-Reporting

The information on this map regarding privately owned service lines is based on the limited information from the water system staff and Columbiana County building data. The Village is encouraging customers to participate in the identification process. Pamphlets were sent with the water bills in December and January encouraging the residence how to identify the service line entering their dwelling for copper, lead, and galvanized steel. Customers are asked to mail the pamphlet back describing the type of service they encountered. If the customer reports a lead service, the water department will inspect it to confirm the material of the service.

Property owners are encouraged to inspect their own service lines entering the building if these are in anyway exposed, and notify the Village of Leetonia Water Department if they have determined whether or not a lead service line exists. Please contact the Water Department by calling 330-427-8087 or sending an email to lab@leetonia.org. A representative from the water department will contact you to confirm and update this information for the next map release.

Contacts and Resources

If you have questions about known and potential lead components within the Village of Leetonia Public Water System, please contact:

Leetonia Village Hall
300 East Main
Leetonia Ohio 44431
330-427-8087

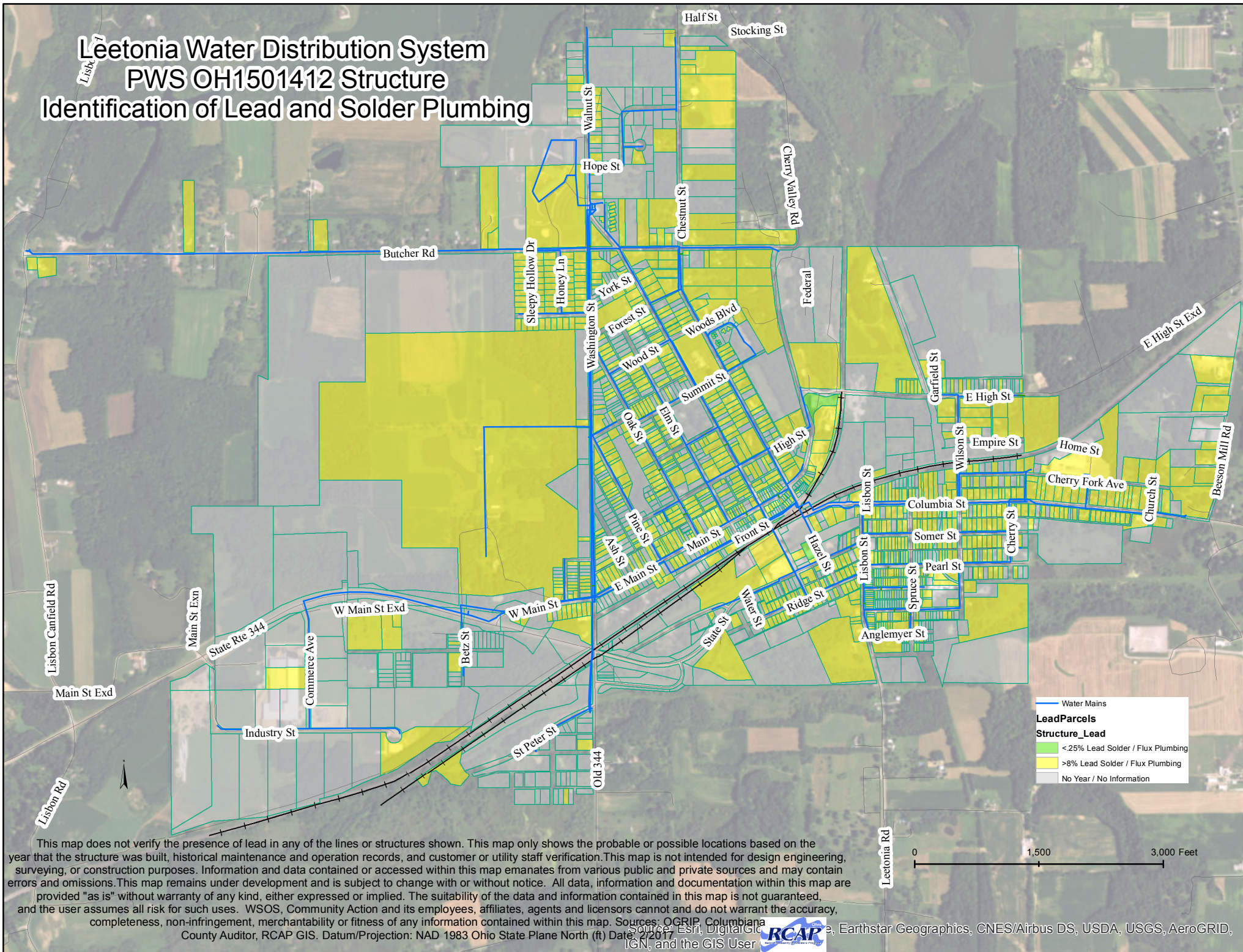
For more information about lead service lines and their removal, we recommend the following resources:

- **The Lead Service Line Replacement Collaborative**
<http://www.lslr-collaborative.org/resources-for-concerned-consumers.html>
- **Ohio EPA 'Learn About Lead' page**
<http://epa.ohio.gov/pic/lead.aspx>
- **US EPA Lead in Drinking Water Information Page**
<https://www.epa.gov/ground-water-and-drinking-water/basic-information-about-lead-drinking-water>

Leetonia Water Distribution System

PWS OH1501412 Structure

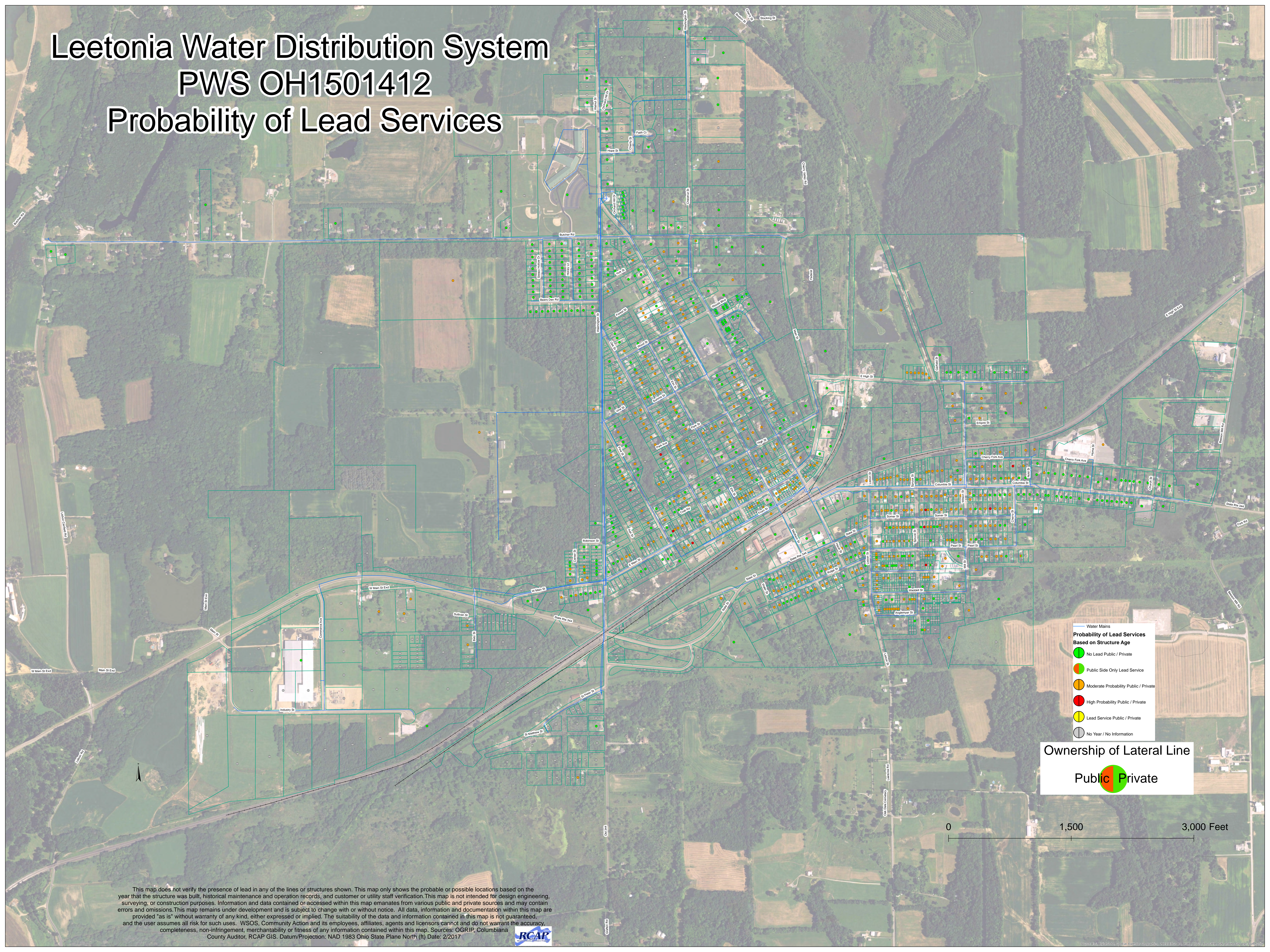
Identification of Lead and Solder Plumbing



Leetonia Water Distribution System

PWS OH1501412

Probability of Lead Services



- Water Mains
- Probability of Lead Services
Based on Structure Age**
- No Lead Public / Private
 - Public Side Only Lead Service
 - Moderate Probability Public / Private
 - High Probability Public / Private
 - Lead Service Public / Private
 - No Year / No Information

Ownership of Lateral Line

Public Private

0 1,500 3,000 Feet

This map does not verify the presence of lead in any of the lines or structures shown. This map only shows the probable or possible locations based on the year that the structure was built, historical maintenance and operation records, and customer or utility staff verification. This map is not intended for design engineering, surveying, or construction purposes. Information and data contained or accessed within this map emanates from various public and private sources and may contain errors and omissions. This map remains under development and is subject to change with or without notice. All data, information and documentation within this map are provided "as is" without warranty of any kind, either expressed or implied. The suitability of the data and information contained in this map is not guaranteed, and the user assumes all risk for such uses. WSOS, Community Action and its employees, affiliates, agents and licensors cannot and do not warrant the accuracy, completeness, non-infringement, merchantability or fitness of any information contained within this map. Sources: OGRIP, Columbiana County Auditor, RCAP GIS. Datum/Projection: NAD 1983 Ohio State Plane North (ft) Date: 2/2017

