



Aurora, Ohio

Public Water System Lead (Pb) Components

PWSID Portage County #OH6700003

Prepared February 28, 2017

To comply with Section 6109.21 of the Ohio Revised Code, enacted in September 2016, the City of Aurora in Portage County, Ohio has created the following report and attached map to identify known and potential components of water service lines that contain lead (Pb).

The following information and attached map do not verify the presence of lead in any of the plumbing components or structures shown. The information and map only show the probable or possible locations based on the year that structures were built, or by the year that the plumbing component was installed.

RCAP staff and the City of Aurora Water Department met on February 24, 2017 to review a map of the service area. The earliest water mains were laid in the early 1960's and was replaced in 1993 and 2003. The remaining mains were all installed after the late 1970's. The water mains are all ductile iron and or transite pipe with copper services.

The digital maps provided depicts the parcels served by the public water system, and residential structure plumbing that may contain lead solder and flux based on structure construction date. The City of Aurora does not have any lead service lines on the Portage County water supply system.

Public and Private Ownership of Service Lines

The City of Aurora Water Department within the Portage County system distributes water to approximately 63 parcels. 6 parcels have private wells and 14 parcels contain no structures. There are approximately 83 parcels in this area a combination of industrial, commercial, and residential consumers. The City has 6,345 parcels within its boundaries. The City owns and maintains service lines from the water distribution mains up to the curb stop for each water customer. The remainder of each service line from the curb stop to the building is the responsibility of the property owner

The tables below provide information about the possibility of lead service line materials.

Public Service Line Lead Probability Parcel Based		
Possibility of Lead	Public Lines #	% of System
Non Lead	63	100%

Private Service Line Lead Probability Parcel Based		
Possibility of Lead	Private #	% of System
Non-Lead	63	100%

Distribution System

The City of Aurora has approximately 5.2 miles of water main lines within the Portage County served system. The earliest components of this system were installed in the early 1960's. The water department has Y-Book records and blue prints for Portage County Water Distribution System. Mr. Reker, who has worked in the water department for approximately 19 years and has overseen the meter replacements and routine maintenance and repairs, confirmed he has never found a lead service line on the public side or private side. Meters installed after 2014 will have less than 0.25% lead.

Indoor Plumbing

Buildings in Ohio built prior to 1998 or that use plumbing material or solder manufactured before 1998 may have materials with greater than 8% lead and are at a higher risk of contributing lead to the drinking water than materials manufactured after 1998.

Buildings built and plumbing materials manufactured after 2014 were required to have less than 0.25% lead by weight and have the lowest risk for contributing lead to the drinking water. It should be noted however that, although prohibited, some use of leaded solder or leaded components may have occurred after the prohibitions became effective.

Customer Self-Reporting

The information on this map regarding privately owned service lines is based on the limited information from the water system staff and Portage County building and parcel data. Property owners are encouraged to inspect their own service lines entering the building if these are in anyway exposed, and notify the City of Aurora Water Department if they have determined whether or not a lead service line exists. Please contact the Water Department by calling 330-995-9109 or sending an email to utilitydepartment@auroraoh.com. A representative from the water department will contact you to confirm and update this information for the next map release.

Contacts and Resources

If you have questions about known and potential lead components within the City of Aurora Public Water System, please contact:

City of Aurora Water Department
158 W. Pioneer Trail
Aurora, OH 44202
330-995-9109

For more information about lead service lines and their removal, we recommend the following resources:

- **The Lead Service Line Replacement Collaborative**
<http://www.lslr-collaborative.org/resources-for-concerned-consumers.html>
- **Ohio EPA 'Learn About Lead' page**
<http://epa.ohio.gov/pic/lead.aspx>
- **US EPA Lead in Drinking Water Information Page**
<https://www.epa.gov/ground-water-and-drinking-water/basic-information-about-lead-drinking-water>


**VERIFICATION FORM FOR COMMUNITY PUBLIC WATER SYSTEMS
CLAIMING NO LEAD SERVICE LINES**

The owner or operator of all community public water systems must identify and map areas of their distribution system that are known or are likely to contain lead service lines. Systems must submit a copy of the applicable map to the Ohio Department of Health and the Ohio Department of Job and Family Services. Systems must also submit a report to the director containing at least both of the following: (1) The applicable map with narrative, and (2) A list of sampling locations used to collect samples as required by Ohio Revised Code (ORC) Section 6109.121 and any rules adopted thereunder, including contact information for the owner and occupant of each sampling site.

Should a water system determine no lead service lines exist in their distribution system, they must provide information stating they reviewed, at the minimum, historical permit records and local ordinances, distribution maintenance records and information pertaining to installation dates or materials for all services lines. This information must be verified below.

I HEREBY CERTIFY THAT THE FOLLOWING METHOD(S) WERE USED TO DETERMINE NO LEAD
SERVICE LINES EXIST IN THIS WATER SYSTEM'S DISTRIBUTION SYSTEM, AS REQUIRED BY
ORC 6109.121(F):

LEAD SERVICE LINE VERIFICATION
<p>This PWS states they have no lead service lines and has reviewed the following information (select one or more of the following):</p> <p style="margin-left: 40px;">X Historical permit records and/or local ordinances</p> <p style="margin-left: 40px;">X Distribution maintenance records (i.e. meter replacement, waterline break repairs)</p> <p style="margin-left: 40px;">X Information pertaining to installation dates for all service lines (i.e. after 1986 when lead services lines were banned)</p> <p style="margin-left: 40px;"><input type="checkbox"/> Service line material of all service lines is known (i.e. all service lines are known to be PVC)</p>

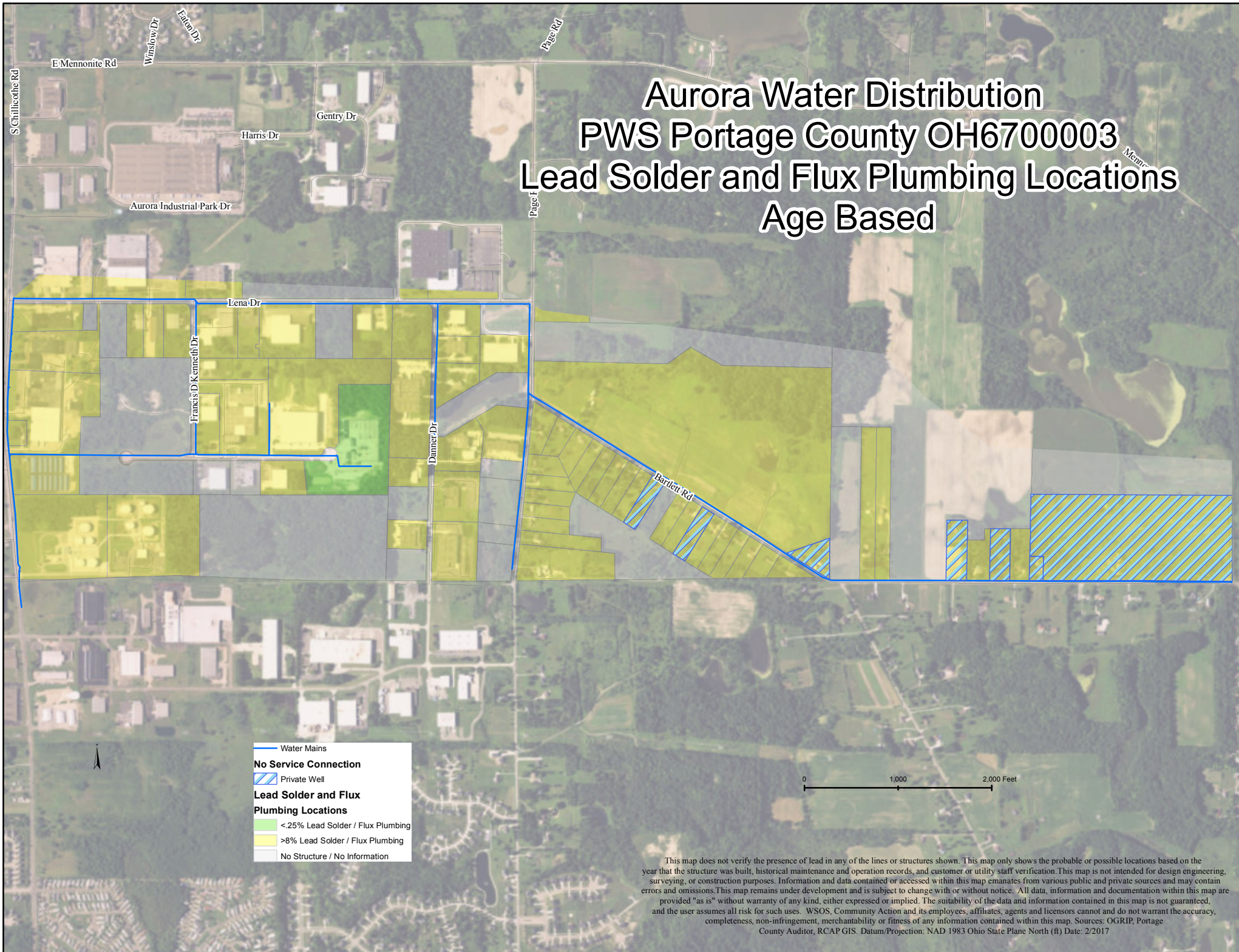
 _____ Signature of Responsible Person	2/27/17 _____ Date
<p style="font-size: 1.2em; margin: 0;">John E. Trew Director</p> _____ Printed Name and Title of Responsible Person	

PWS NAME: Aurora City –
Portage PWS
PWS ID: OH6700003
COUNTY: Portage

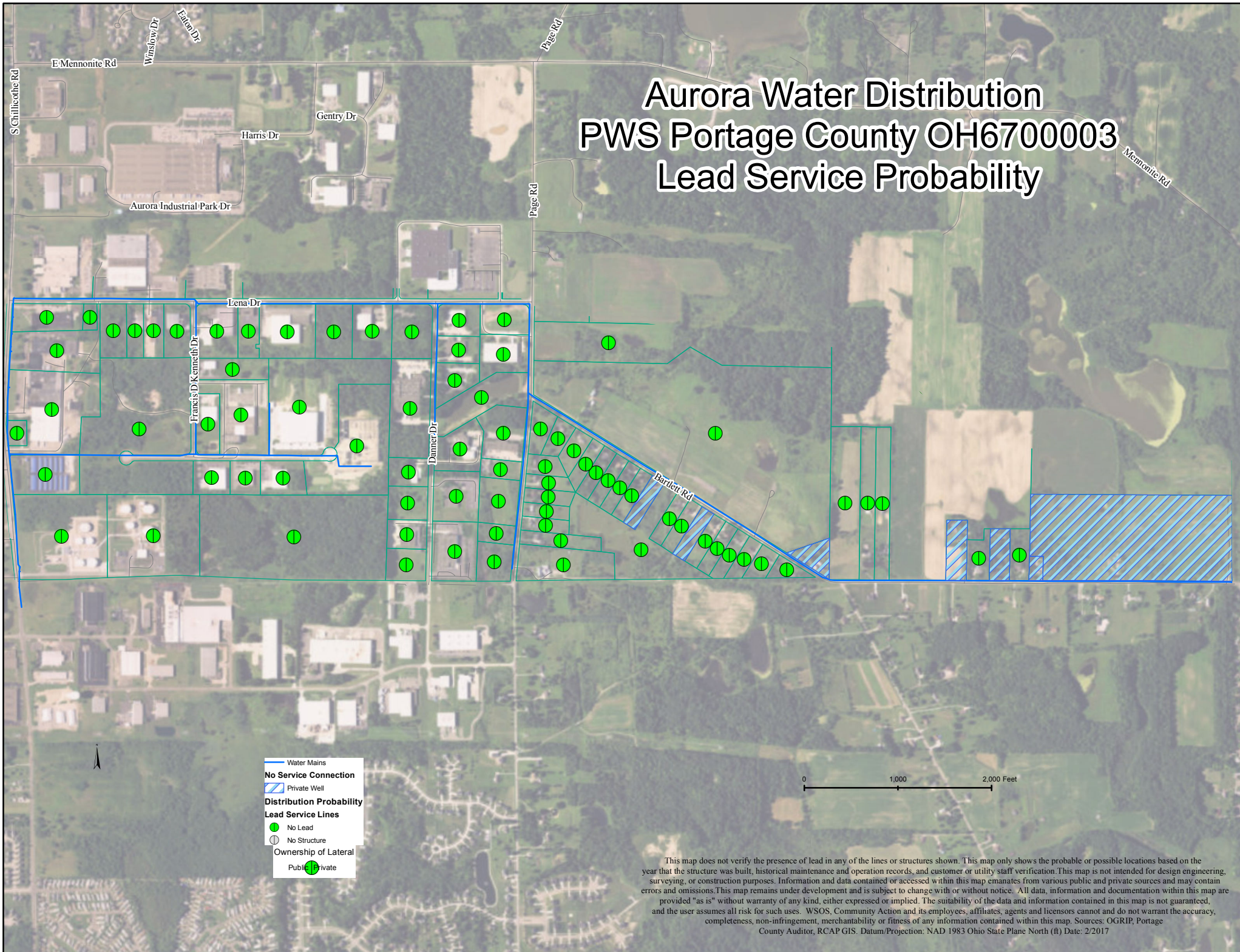
For Ohio EPA use only:

Date Verification Rec'd: _____

Aurora Water Distribution PWS Portage County OH6700003 Lead Solder and Flux Plumbing Locations Age Based



Aurora Water Distribution PWS Portage County OH6700003 Lead Service Probability



This map does not verify the presence of lead in any of the lines or structures shown. This map only shows the probable or possible locations based on the year that the structure was built, historical maintenance and operation records, and customer or utility staff verification. This map is not intended for design engineering, surveying, or construction purposes. Information and data contained or accessed within this map emanates from various public and private sources and may contain errors and omissions. This map remains under development and is subject to change with or without notice. All data, information and documentation within this map are provided "as is" without warranty of any kind, either expressed or implied. The suitability of the data and information contained in this map is not guaranteed, and the user assumes all risk for such uses. WSOS, Community Action and its employees, affiliates, agents and licensors cannot and do not warrant the accuracy, completeness, non-infringement, merchantability or fitness of any information contained within this map. Sources: OGRIP, Portage County Auditor, RCAP GIS. Datum/Projection: NAD 1983 Ohio State Plane North (ft) Date: 2/2017