



Aurora, Ohio

Public Water System Lead (Pb) Components

PWSID Cleveland # OH6789112

Prepared February 28, 2017

To comply with Section 6109.21 of the Ohio Revised Code, enacted in September 2016, the City of Aurora in Portage County, Ohio has created the following report and attached map to identify known and potential components of water service lines that contain lead (Pb).

The following information and attached map do not verify the presence of lead in any of the plumbing components or structures shown. The information and map only show the probable or possible locations based on the year that structures were built, or by the year that the plumbing component was installed.

RCAP staff and the City of Aurora Water Department met on February 24, 2017 to review a map of the service area. Prior to 1925, no applicable historical maintenance and operation records, tap cards, or as-builts were available to identify lead component locations. Locations where lead service components have been replaced, and locations where lead components are likely still being used, were identified by the City of Aurora Water Department and recorded in a GIS database.

The digital maps provided depicts the parcels served by the public water system, and residential structure plumbing that may contain lead solder and flux based on structure construction date. The City of Aurora has not discovered any lead service lines on the customer (private) side of the water system during meter replacement projects. However, there is a high probability that some of the older infrastructure may or may not contain a lead service connection on the public water side of the distribution system.

Public and Private Ownership of Service Lines

The City of Aurora Water Department distributes water to approximately 4,073 parcels out of 6,345 parcels within its boundaries. The City owns and maintains service lines from the water distribution mains up to the curb stop for each water customer. The remainder of each service line from the curb stop to the building is the responsibility of the property owner. The probability rating assigned to public service lines was based based on the age of the infrastructure and or material of the water main.

The following tables summarize this information.

Public Service Line Lead Probability Parcel Based		
Possibility of Lead	Public Lines #	% of System
Non Lead	4006	98.4%
High Probability	67	1.6%

Private Service Line Lead Probability Parcel Based		
Possibility of Lead	Private #	% of System
Non-Lead	4073	100%

Distribution System

The City of Aurora has approximately 92.53 miles of water main lines. The oldest sections of the water system were installed in the early 1920's. Within the distribution system, none of the pipes themselves are known to contain any lead, however, there may be joints, valves, and fittings within the system that may contain lead on some of the older mains. The City of Aurora has been and will continue to replace the water mains in the center of the City (the Old Allotments). These were installed in the mid 1920's and may have lead services on the public side. The current schedule will have all of the original water mains replaced in the next 5 years, which will remove any lead services. Meters installed after 2014 will have less than 0.25% lead.

The water department has Y-Book records for many of the parcels when the City started its water distribution system. There has been no lead recorded on the residential (private) side of the meter, only the public water supply portion of the lateral. Mr. Reker, who has worked in the water department for approximately 19 years and has overseen the meter replacements and routine maintenance and repairs, confirmed he has never found a lead service line on the private side.

Indoor Plumbing

Buildings in Ohio built prior to 1998 or that use plumbing material or solder manufactured before 1998 may have materials with greater than 8% lead and are at a higher risk of contributing lead to the drinking water than materials manufactured after 1998.

Buildings built and plumbing materials manufactured after 2014 were required to have less than 0.25% lead by weight and have the lowest risk for contributing lead to the drinking water. It should be noted however that, although prohibited, some use of leaded solder or leaded components may have occurred after the prohibitions became effective.

Customer Self-Reporting

The information on this map regarding privately owned service lines is based on the limited information from the water system staff and Portage County building and parcel data. Property owners are encouraged to inspect their own service lines entering the building if these are in anyway exposed, and notify the City of Aurora Water Department if they have determined whether or not a lead service line exists. Please contact the Water Department by calling 330-995-9109 or sending an email to utilitydepartment@auroraoh.com. A representative from the water department will contact you to confirm and update this information for the next map release.

Contacts and Resources

If you have questions about known and potential lead components within the City of Aurora Public Water System, please contact:

City of Aurora Water Department
158 W. Pioneer Trail
Aurora, OH 44202
330-995-9109

For more information about lead service lines and their removal, we recommend the following resources:

- **The Lead Service Line Replacement Collaborative**
<http://www.lslr-collaborative.org/resources-for-concerned-consumers.html>
- **Ohio EPA 'Learn About Lead' page**
<http://epa.ohio.gov/pic/lead.aspx>
- **US EPA Lead in Drinking Water Information Page**
<https://www.epa.gov/ground-water-and-drinking-water/basic-information-about-lead-drinking-water>

Aurora Water Distribution

PWS Cleveland OH6789112

Lead Solder and Flux Locations Age Based

Legend:

- Portage County PWS
- Water Mains
- Structure Determination**
- Age Based**
 - < 25% Lead Solder / Flux Plumbing
 - > 8% Lead Solder / Flux Plumbing
 - No Structure / No Information

This map does not verify the presence of lead in any of the lines or structures shown. This map only shows the probable or possible locations based on the year that the structure was built, historical maintenance and operation records, and customer or utility staff verification. This map is not intended for design engineering, surveying, or construction purposes. Information and data contained or accessed within this map emanates from various public and private sources and may contain errors and omissions. This map remains under development and is subject to change with or without notice. All data, information and documentation within this map are provided "as is" without warranty of any kind, either expressed or implied. The suitability of the data and information contained in this map is not guaranteed, and the user assumes all risk for such uses. WSOS, Community Action and its employees, affiliates, agents and licensors cannot and do not warrant the accuracy, completeness, non-infringement, merchantability or fitness of any information contained herein.

SolidMap Inc., Digitizer Services Corp., GeoEye, Earthstar Geographics, CNES/Airbus DS, USDA, USGS, AeroGRID, IGN, and the GIS User Community
County Auditor, RCAP GIS, Datum Projection: NAD 83 UTM Zone 18N North America, and the GIS User Community

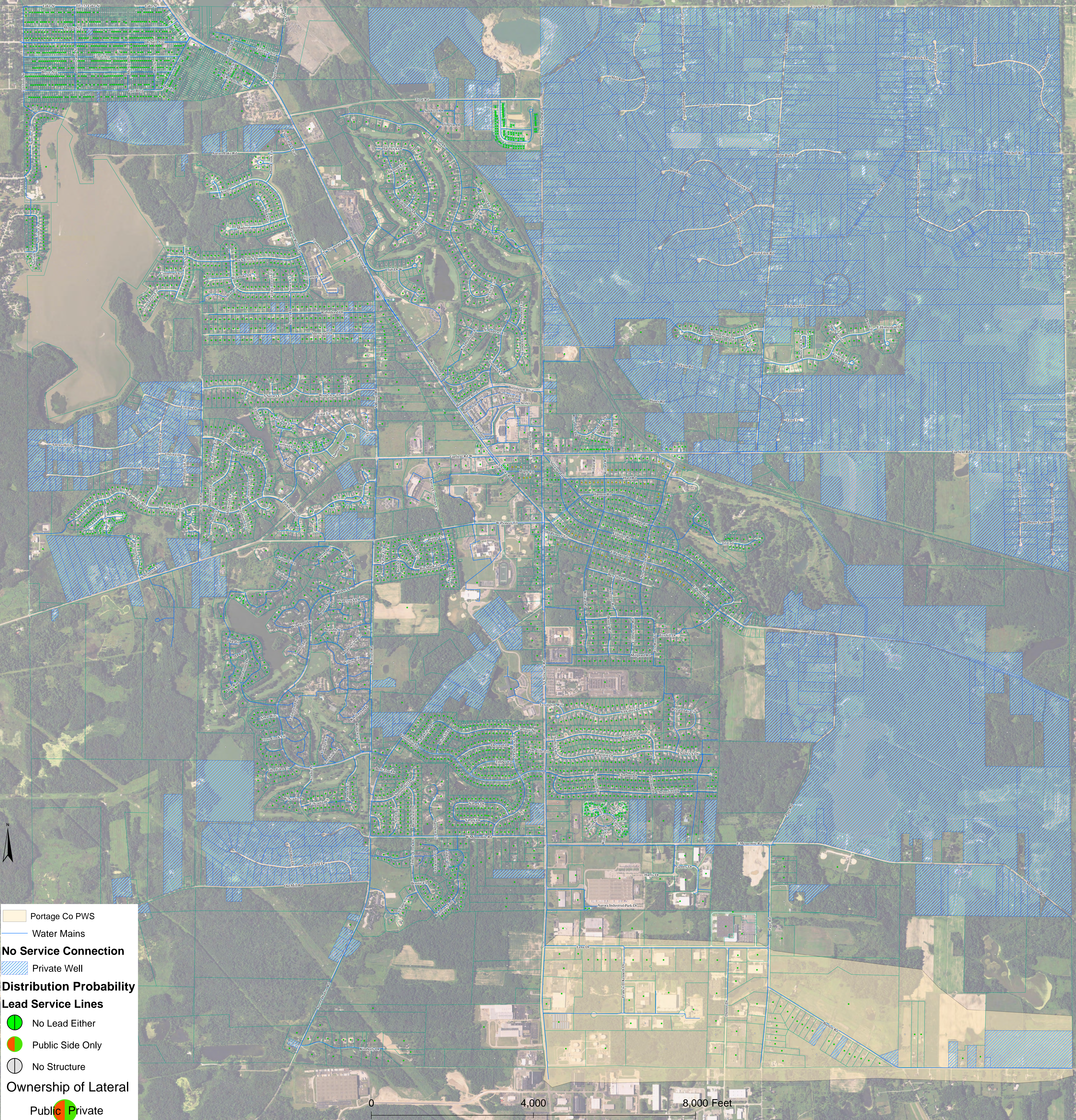
This map does not verify the presence or lead in any of the lines or structures shown. This map only shows the probable or possible locations based on the year that the structure was built, historical maintenance and operation records, and customer or utility staff verification. This map is not intended for design engineering, surveying, or construction purposes. Information and data contained or accessed within this map emanates from various public and private sources and may contain errors and omissions. This map remains under development and is subject to change with or without notice. All data, information and documentation within this map are provided "as is" without warranty of any kind, either expressed or implied. The suitability of the data and information contained in this map is not guaranteed, and the user assumes all risk for such uses. WSOS, Community Action and its employees, affiliates, agents and licensors cannot and do not warrant the accuracy, completeness, non-infringement, merchantability or fitness of any information from digital globe maps, Esri, Earthstar, Geographic, CNES/Airbus DS, or any other source.

County Auditor, RCAP GIS. Datum/Projection: NAD83 USGS State Plane North Central Zone 10 GIS User Community

Aurora Water Distribution

PWS Cleveland OH6789112

Lead Service Probability



This map does not verify the presence of lead in any of the lines or structures shown. This map only shows the probable or possible locations based on the year that the structure was built, historical maintenance and operation records, and customer or utility staff verification. This map is not intended for design engineering, surveying, or construction purposes. Information and data contained or accessed within this map emanates from various public and private sources and may contain errors and omissions. This map remains under development and is subject to change with or without notice. All data, information and documentation within this map are provided "as is" without warranty of any kind, either expressed or implied. The suitability of the data and information contained in this map is not guaranteed, and the user assumes all risk for such uses. WSOS, Community Action and its employees, affiliates, agents and licensors cannot and do not warrant the accuracy, completeness, non-infringement, merchantability or fitness of any information contained within this map. Sources: OGRIP, Portage County Auditor, RCAP GIS. Datum/Projection: NAD 1983 Ohio State Plane North (ft) Date: 2/2017