

OH 2861412

CREATIVE MOLD & MACHINE, INC.
STANDARD PROCEDURE

GENERAL POLICY

PRIOR TO FIRE

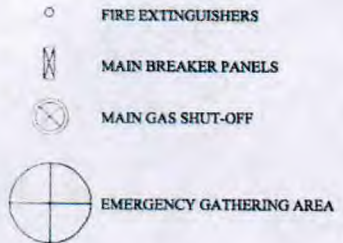
- A. Familiarize yourself with locations of fire exit and electrical panels in your area.
- B. Familiarize yourself with all exits in the building.
- C. Keep your eyes open for blocked exits, fire extinguishers, fire alarms and electrical panels.

DURING A FIRE

- A. Never approach a fire alone, you should be trained in the use of fire extinguishers and there should be a trained back-up person before you attempt to extinguish.
- B. Determine the nature of the fire (electrical, liquid, paper, etc.) (A, B, C)
- C. If the fire can be put out or contained with one or two fire extinguishers and you have been trained to use fire extinguishers, proceed to extinguish. If not, then evacuate.
- D. In the case of a large fire or an electrical fire, the electric power should be shut off, if possible, by maintenance or a qualified person.
- E. If the fire is large, the gas main, located on the northwest side of the plant, should be shut off by maintenance or the fire department.

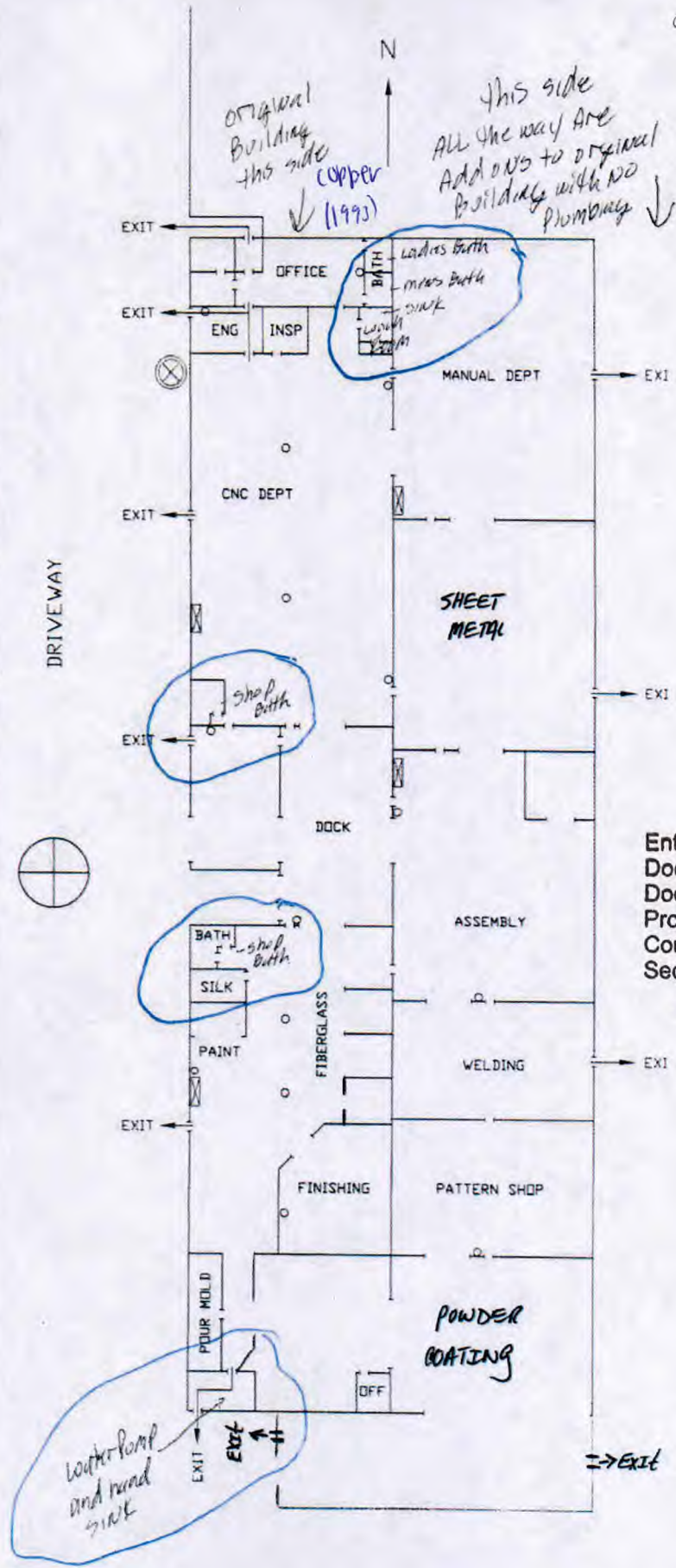
EVACUATION

- A. If the fire alarm or verbal evacuation is given, all personnel not involved in suppressing or investigating a fire should leave the building in a quiet and orderly fashion by the nearest exit.
- B. All personnel shall assemble in the designated area.
- C. The key person (Group Leader) in each group will take a head count and report all individuals present or those who are missing to the incident commander.



EMERGENCY TELEPHONE NUMBERS

Emergency Services	911
Newbury Fire Department	440-564-2261
Seauga County Sheriff	440-564-7014
Local Emergency Center	440-285-6000



Entity: Creative Mold & Machine
 Doc Type: REPORT
 Doc Subtype: _____
 Program: PDA6W
 County: Crawley
 Secondary ID: OH 2861412
 eDOC in color

The original part of the building was built in 1993 with copper plumbing and should not have the lead in the solder used for the copper fittings.
 The building add-ons that are to the east part of my layout and go all the way down have no water in them.