

City of Rittman

30 N. Main St., Rittman, OH 44270

330/ 925-2045

330/ 925-2066 FAX

Date: February 26, 2017
To: Ohio EPA, DDAGW, NE District Office
Ohio Dept. of Health (ODH)
Ohio Dept. of Job and Family Services (ODJFS)
From: Ken Mann, Utilities Director
Ref.: Lead Mapping in Distribution System (HB 512, sec. 6109.121)

Dear Sirs,

Enclosed you will find as required:

- a. A distribution map with the required information in three forms. The first form has the greatest detail if you can display/work with DWG files (autocad). The second form is a separate PDF file for each sheet of the hard copy of the maps (form three) that I have included.
- b. A narrative description of the buildings served by the water system likely to contain lead solder, plumbing or fixtures. A narrative description of the waterlines and service lines in the distribution system.
- c. A list of our Tier 1 sites used to collect samples for our Lead and Copper Study.

To the ODH and ODJFS if you do not already have a program that handles DWG files please contact me and I can inform you of the free software that we used to create the file. This is the best way to view the map in detail.

To the Ohio EPA if you confirm that the mapping is adequate I will have my IT Department put it on our website for public consideration.

Thank you for your time and consideration,

Ken Mann
330-925-2062
kmann@rittman.com

Narrative Description of Lead in Rittman's Distribution System

Homes and Buildings

The majority of homes, businesses and churches in Rittman were built before 1999. Unless a complete re-plumbing of the building was done after that date these structures have copper pipe with high lead solder and brass fittings and fixtures with high lead content. Buildings with galvanized pipe would still have fittings and fixtures with high lead content.

Homes, businesses and churches in Rittman that were built from 1999 to 2014 would have lead solder, brass fittings and fixtures with only 8% lead. These homes are found mainly in these areas:

Sunset Hill Farm allotment (North and West of Rufener St. and Briarhill Dr.)

The South Overlook Dr. Allotment

The Hills & Dales Allotment (Southwest of the Rec Center)

Paradise Hill Subdivision (West end of Loise St. and Home St.)

McElwee Allotment

Vista Ridge Condominiums (West of Rufener St. at City Limits)

Scenic View Condominiums (East of Rufener St. before City Limits)

Oak Hill Allotment (At end of South Metzger Ave.)

Rittman Rec Center

Rittman Schools High/Middle School and Elementary School

Other individual houses (28) and buildings (4) as marked on the map in various areas of the city.

Homes, businesses and churches in Rittman that were built from 2015 to present would have lead solder, brass fittings and fixtures with only 0.25% lead. At present that is 9 homes and one church marked on the map in various areas of the city.

Areas on the map surrounded by magenta and cyan are structures built after 8% and 0.25% lead solder rules were enacted. All other areas may have high lead solder and fixtures.

Water Lines and Service Lines

In the early 1950's the city stopped installing CIP and lead services and for about 10 years installed AC pipe and copper services. After that they switched to some CIP and copper then DIP and copper when DIP became available in the 1960's. Then in the late 1970's the city switched to PVC and copper services.

The city completed the replacement of 99% of the 3/4" and 1" meters in October of 2016. No lead private services were found as we suspected. Every public lead service line that has been dug up in the last 40+ years has been connected to either galvanized or copper private service lines.

As the city finishes the meter replacement for the remainder of the 3/4" and 1" meters we will verify private service line materials. The city has already inspected the larger meters at church's, businesses and commercial establishments and found no private lead services. This inspection was done to work with and share cost of future meter replacements with these customers.

On the map houses and buildings with green shading DO NOT have private lead service lines (ALL). Houses and buildings with yellow shading DO have private lead services (NONE). Houses and buildings with grey shading, the private services are unknown (NONE). Houses and buildings with no shading are houses NOT connected to the City's distribution system.

On the map streets shaded green DO NOT have any public lead services. Streets that have no shading do not have waterlines or do not have houses connected to the City's distribution system. Streets that have yellow and grey shading DO have some or all public lead services. The following is a list of streets that DO have some or all public lead services:

- Frederick St.
- N. Seneca St. (From E. Sunset Ave. to Beach St.)
- Gish St.
- Sheldon Ave.
- North and South First St
- North and South Second St.
- North and South Third St.
- North and South Fourth St.
- Park St. (All four sides)
- Diagonal St.
- Westhill St.
- Greenbriar Dr.
- Ganyard Dr.
- Sterling Ave. (From S. Main St. to S. Hicken Ave.)
- S. Main St. (From Shong Dr. to Erie St.)
- Erie St.
- Grant St.
- S. State St.
- S. Seneca St.

The city will give high priority to replacement of waterlines that have probable public lead service lines.

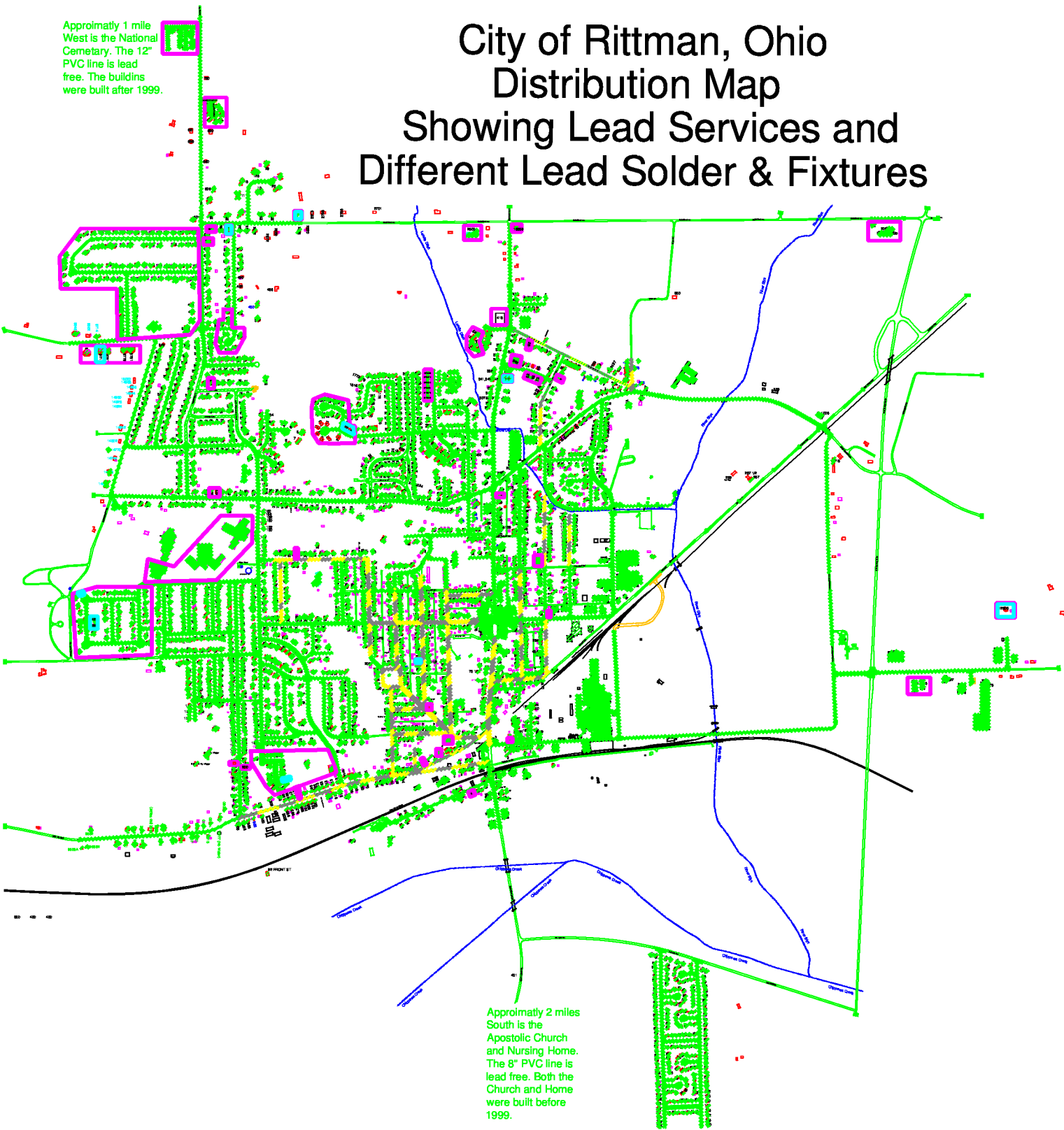
Key

- House/Building No Private Lead Service Line
- House/Building Private Lead Service Line (0)
- House/Building Unknown Private Lead Service Line (20)
- City /Private Streets No Public Lead Service Line
- City /Private Streets Probable Lead Service Lines *
- City Streets with no public Service Lines or no water lines
- Structures built 1999 or after, 8% lead or less solder
- Structures built 2015 or after, 0.25% lead or less solder

* Streets shaded this way had at least 1 public lead service uncovered sometime in the last 25 years.

Sheet numbering for 16 - 11" x 17" sheets.

1	2	3	4
5	6	7	8
9	10	11	12
13	14	15	16



Narrative Discription

As you can see from the overall city map the majority of the city is free of public lead service lines. In the early 1950's the city stopped installing CIP and lead services and for about 10 years installed AC pipe and copper services. After that they switched to some CIP and copper then DIP and copper when DIP became available in the 1960's. Then the late 1970's the city switched to PVC and copper services.

The city completed the replacement of 99% of the 3/4" and 1" meters in October of 2016. No lead private services were found as we suspected. Every public lead service line that has been dug up has been connected to either galvanized or copper private service lines in the last 40+ years.

As the city finishes the meter replacement for the remainder of the 3/4" and 1" meters we will verify private service line materials. The city has already inspected the larger meters at church's, buisnesses and commercial establisments and found no private lead services. This inspection was done to work with and share cost of future meter replacements with these customers.

The city will give high priority to replacement of waterlines that have probable public lead service lines.

Areas surrounded by magenta and cyan are structures built after 8% and 0.25% lead solder rules were enacted. All other areas may have high lead solder and fixtures.

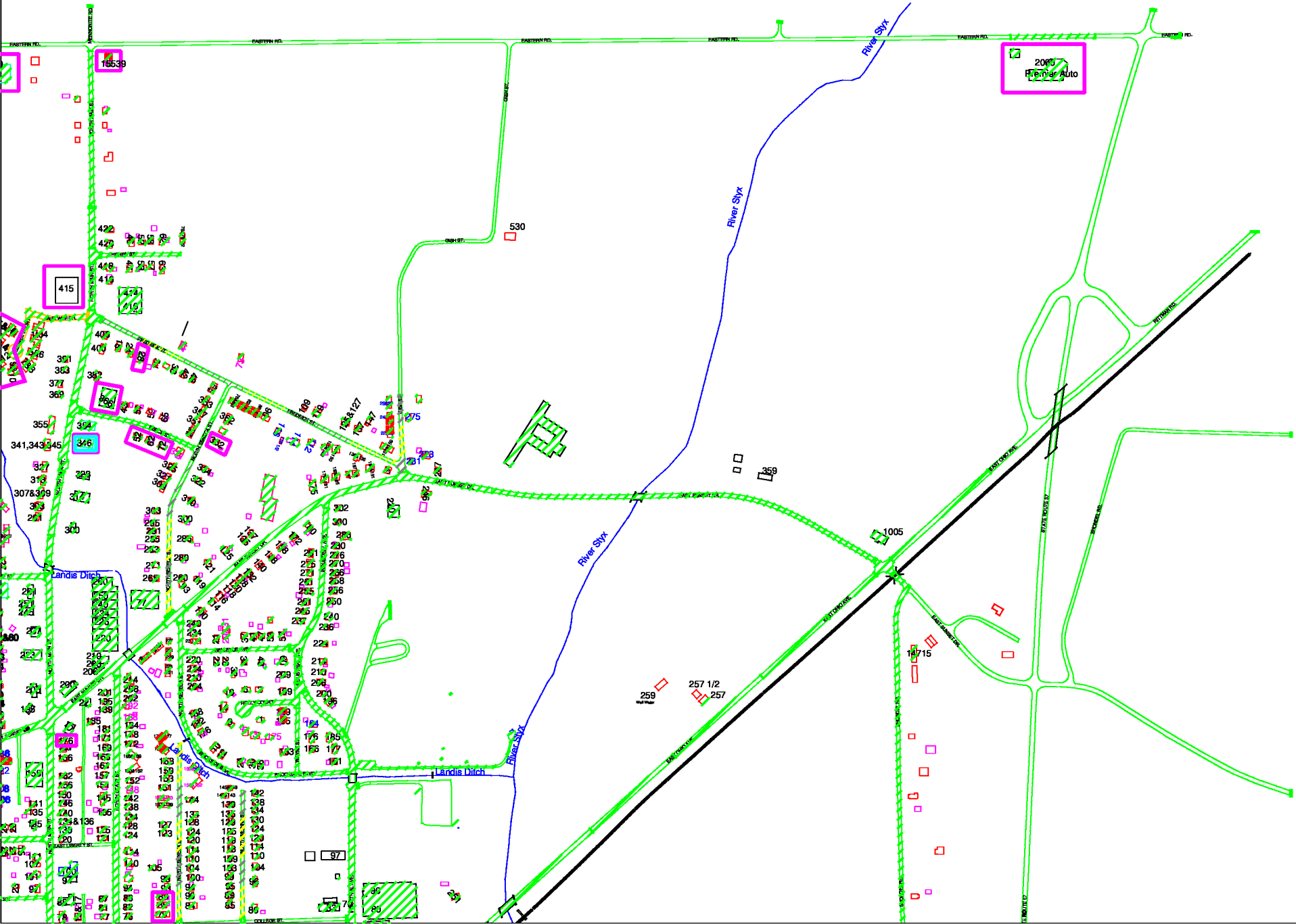
City of Rittman NE Quadrant

N.T.S.

Key

- House/Building
No Private Lead
Service Line
- House/Building
Private Lead
Service Line
- House/Building
Unknown Private Lead
Service Line
- City/Private Street
No Public Lead
Service Line
- City/Private Streets
Probable Lead
Service Lines *
- City Streets
with no public
Service Lines
or no water lines
- Structures
built 1999 or
after, 8% lead
or less solder
- Structures
built 2015 or
after, 0.25% lead
or less solder

* Streets shaded this way had at least 1 public lead service uncovered sometime in the last 25 years.



Key

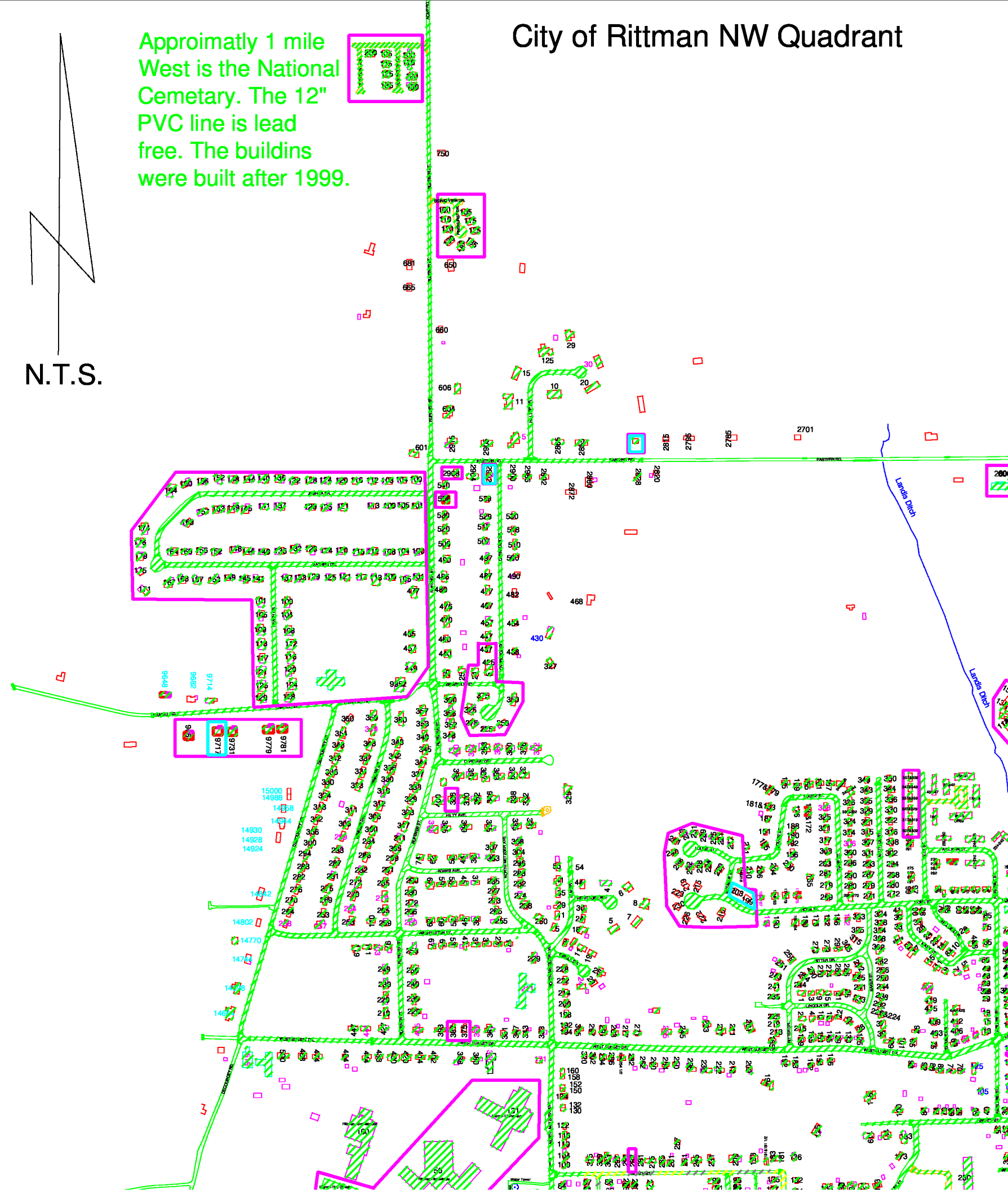
- House/Building
No Private Lead
Service Line
- House/Building
Private Lead
Service Line
- House/Building
Unknown Private Lead
Service Line
- City /Private Street
No Public Lead
Service Line
- City /Private Streets
Probable Lead
Service Lines *
- City Streets
with no public
Service Lines
or no water lines
- Structures
built 1999 or
after, 8% lead
or less solder
- Structures
built 2015 or
after, 0.25% lead
or less solder

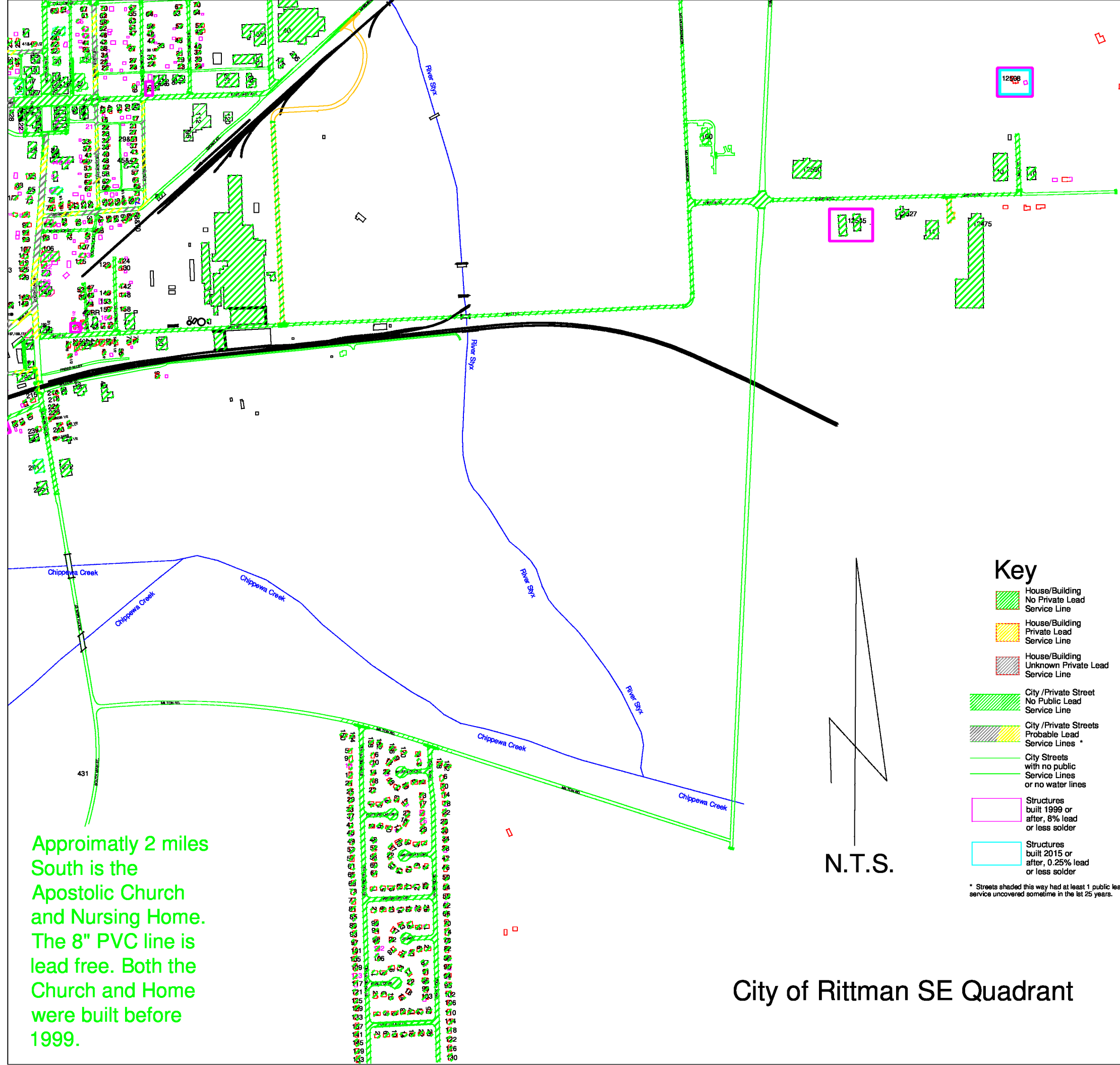
* Streets shaded this way had at least 1 public lead service uncovered sometime in the last 25 years.

N.T.S.

Approximately 1 mile
West is the National
Cemetery. The 12"
PVC line is lead
free. The buildings
were built after 1999.

City of Rittman NW Quadrant





City of Rittman SE Quadrant

1

Key

- House/Building
No Private Lead
Service Line
- House/Building
Private Lead
Service Line
- House/Building
Unknown Private Lead
Service Line

City /Private Street
No Public Lead
Service Line

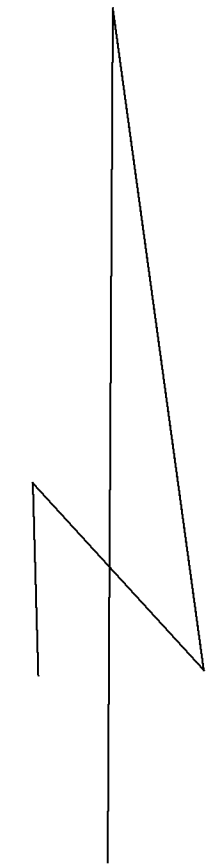
City /Private Streets
Probable Lead
Service Lines *

City Streets
with no public
Service Lines
or no water lines

Structures
built 1999 or
after, 8% lead
or less solder

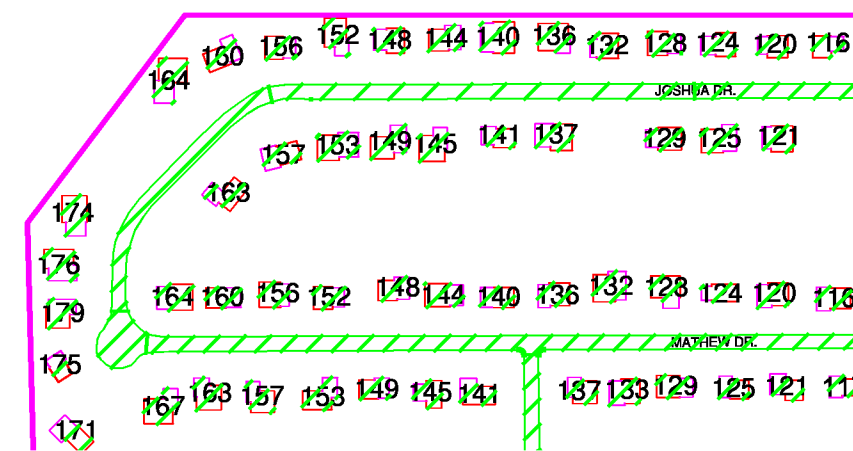
Structures
built 2015 or
after, 0.25% lead
or less solder

* Streets shaded this way had at least 1 public lead
service uncovered sometime in the last 25 years.



N.T.S.

Approximately 1 mile
West is the National
Cemetery. The 12"
PVC line is lead
free. The buildings
were built after 1999.



2

Key

- House/Building
No Private Lead
Service Line
- House/Building
Private Lead
Service Line
- House/Building
Unknown Private Lead
Service Line

City /Private Street
No Public Lead
Service Line

City /Private Streets
Probable Lead
Service Lines *

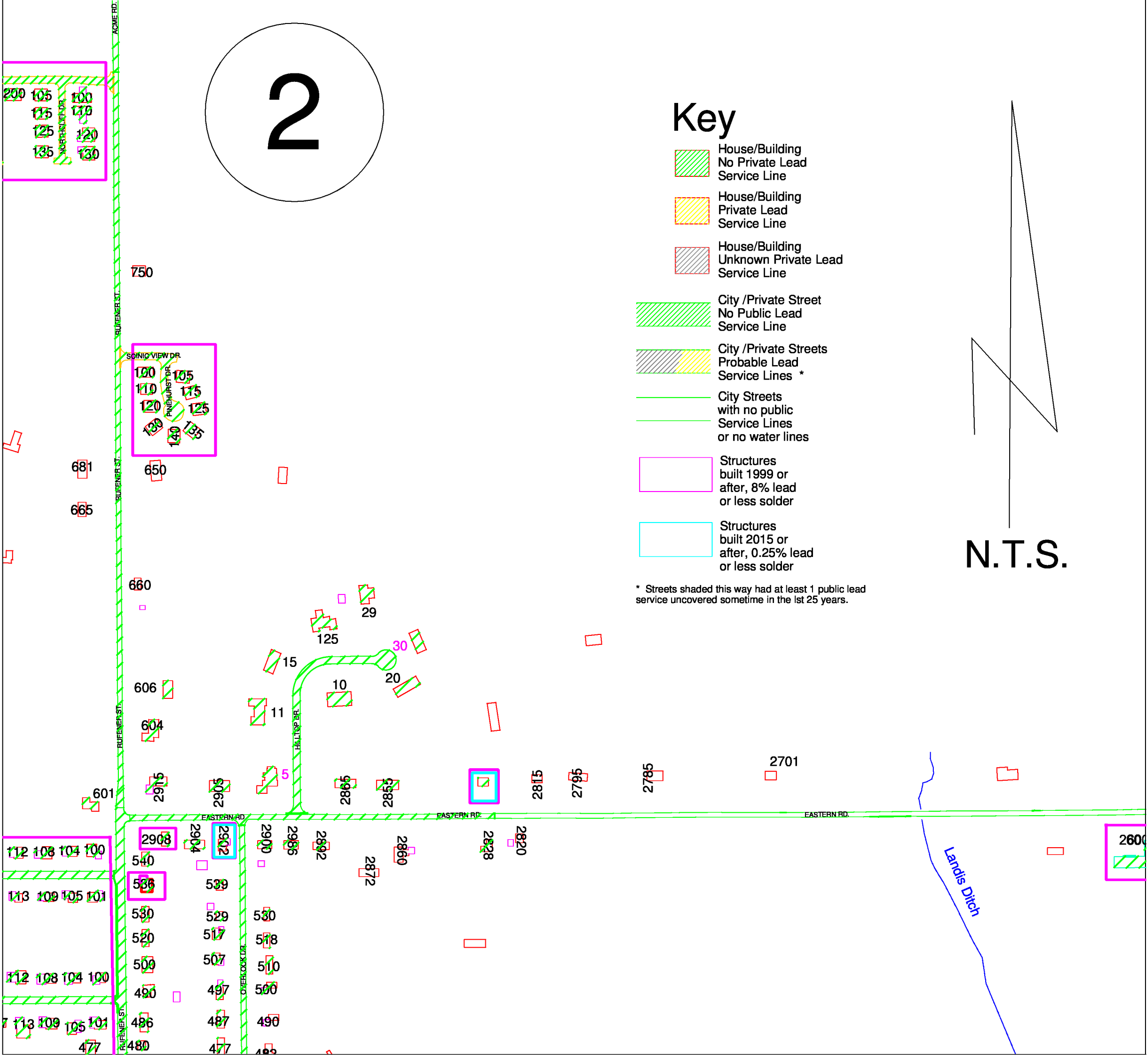
City Streets
with no public
Service Lines
or no water lines

Structures
built 1999 or
after, 8% lead
or less solder

Structures
built 2015 or
after, 0.25% lead
or less solder

* Streets shaded this way had at least 1 public lead
service uncovered sometime in the last 25 years.

N.T.S.



3

Key

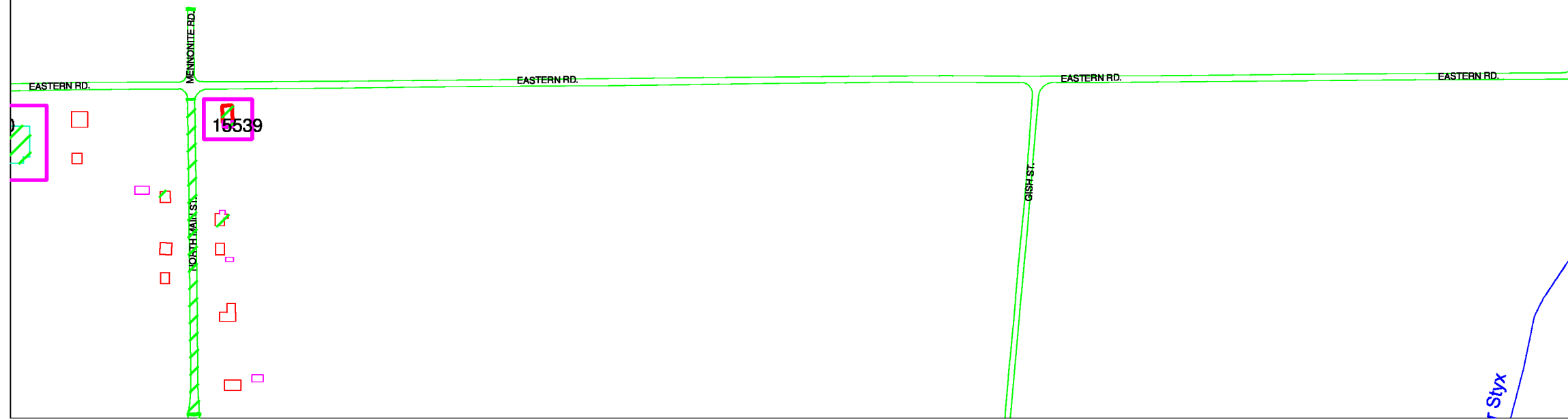
- House/Building
No Private Lead
Service Line
- House/Building
Private Lead
Service Line
- House/Building
Unknown Private Lead
Service Line

- City /Private Street
No Public Lead
Service Line
- City /Private Streets
Probable Lead
Service Lines *
- City Streets
with no public
Service Lines
or no water lines

- Structures
built 1999 or
after, 8% lead
or less solder
- Structures
built 2015 or
after, 0.25% lead
or less solder

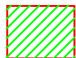
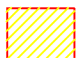

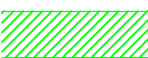
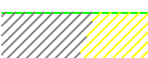



* Streets shaded this way had at least 1 public lead service uncovered sometime in the last 25 years.

N.T.S.

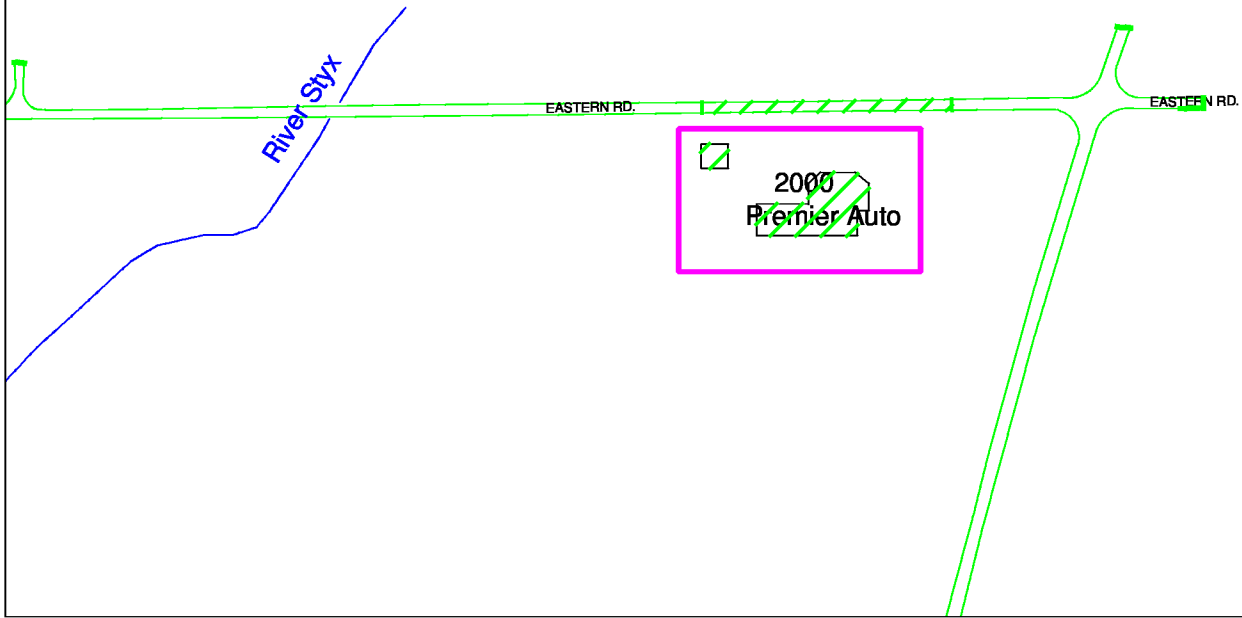
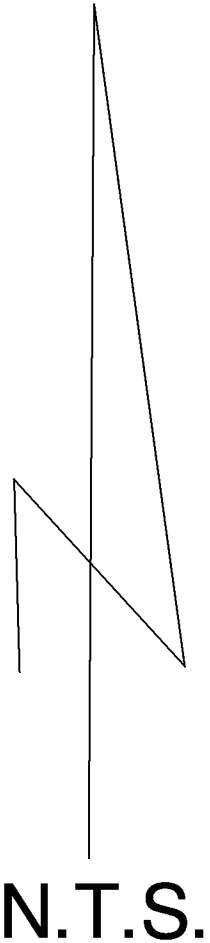


4

Key

-  House/Building
No Private Lead
Service Line
-  House/Building
Private Lead
Service Line
-  House/Building
Unknown Private Lead
Service Line
-  City /Private Street
No Public Lead
Service Line
-  City /Private Streets
Probable Lead
Service Lines *
-  City Streets
with no public
Service Lines
or no water lines
-  Structures
built 1999 or
after, 8% lead
or less solder
-  Structures
built 2015 or
after, 0.25% lead
or less solder

* Streets shaded this way had at least 1 public lead service uncovered sometime in the last 25 years.

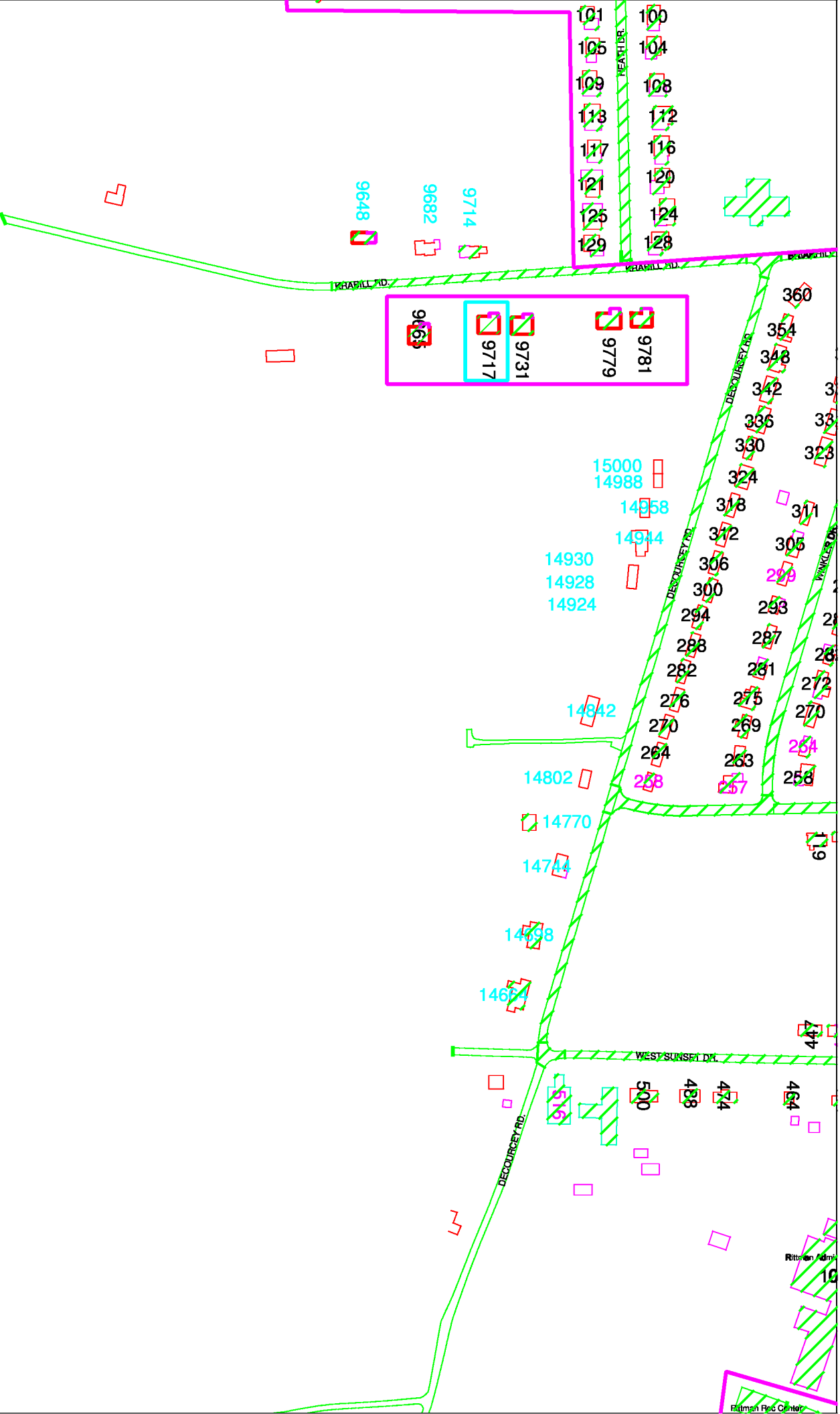
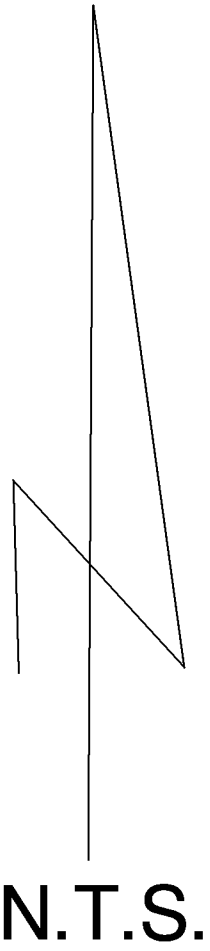


5

Key

- House/Building
No Private Lead
Service Line
- House/Building
Private Lead
Service Line
- House/Building
Unknown Private Lead
Service Line
- City /Private Street
No Public Lead
Service Line
- City /Private Streets
Probable Lead
Service Lines *
- City Streets
with no public
Service Lines
or no water lines
- Structures
built 1999 or
after, 8% lead
or less solder
- Structures
built 2015 or
after, 0.25% lead
or less solder

* Streets shaded this way had at least 1 public lead service uncovered sometime in the 1st 25 years.



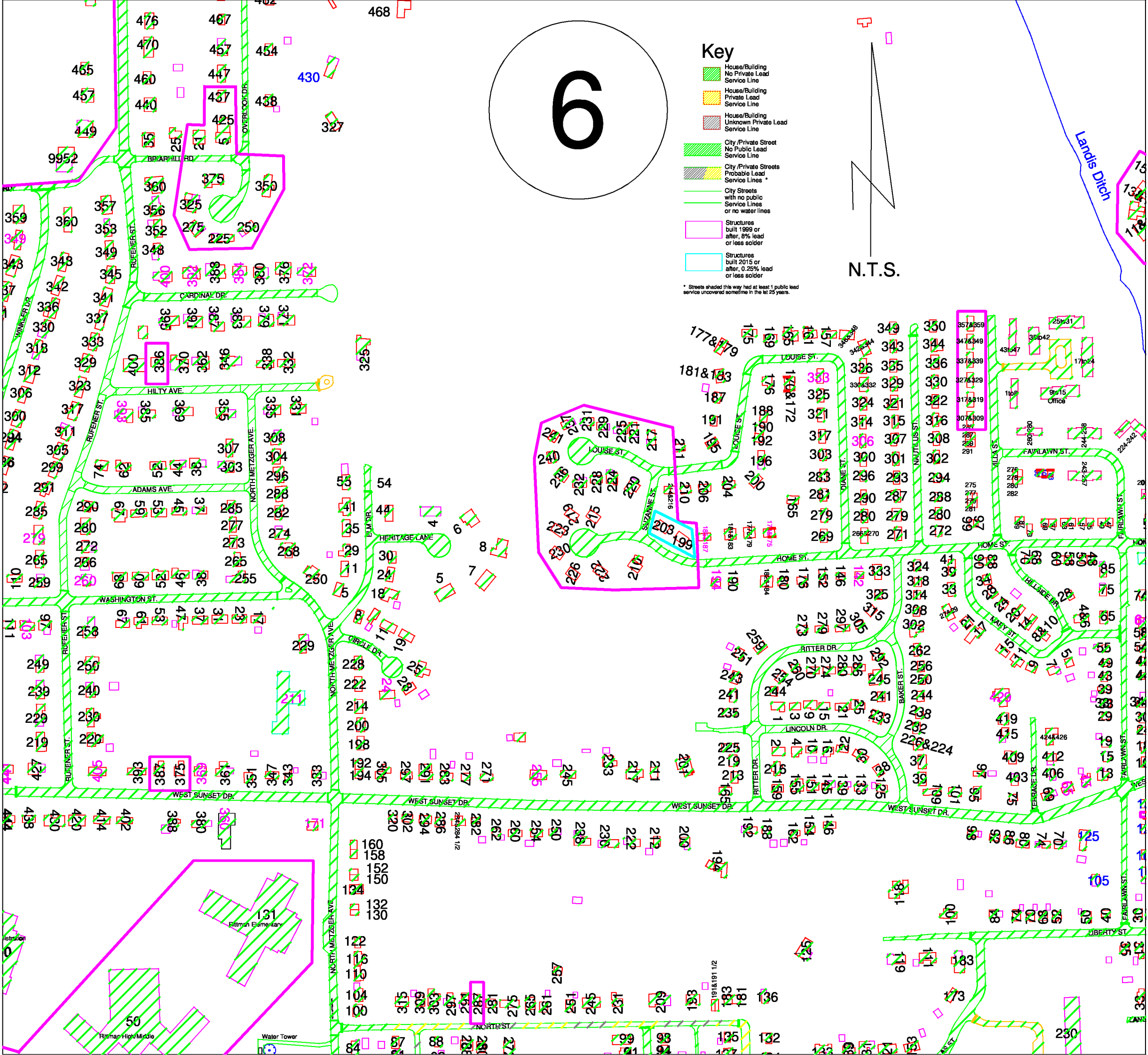
6

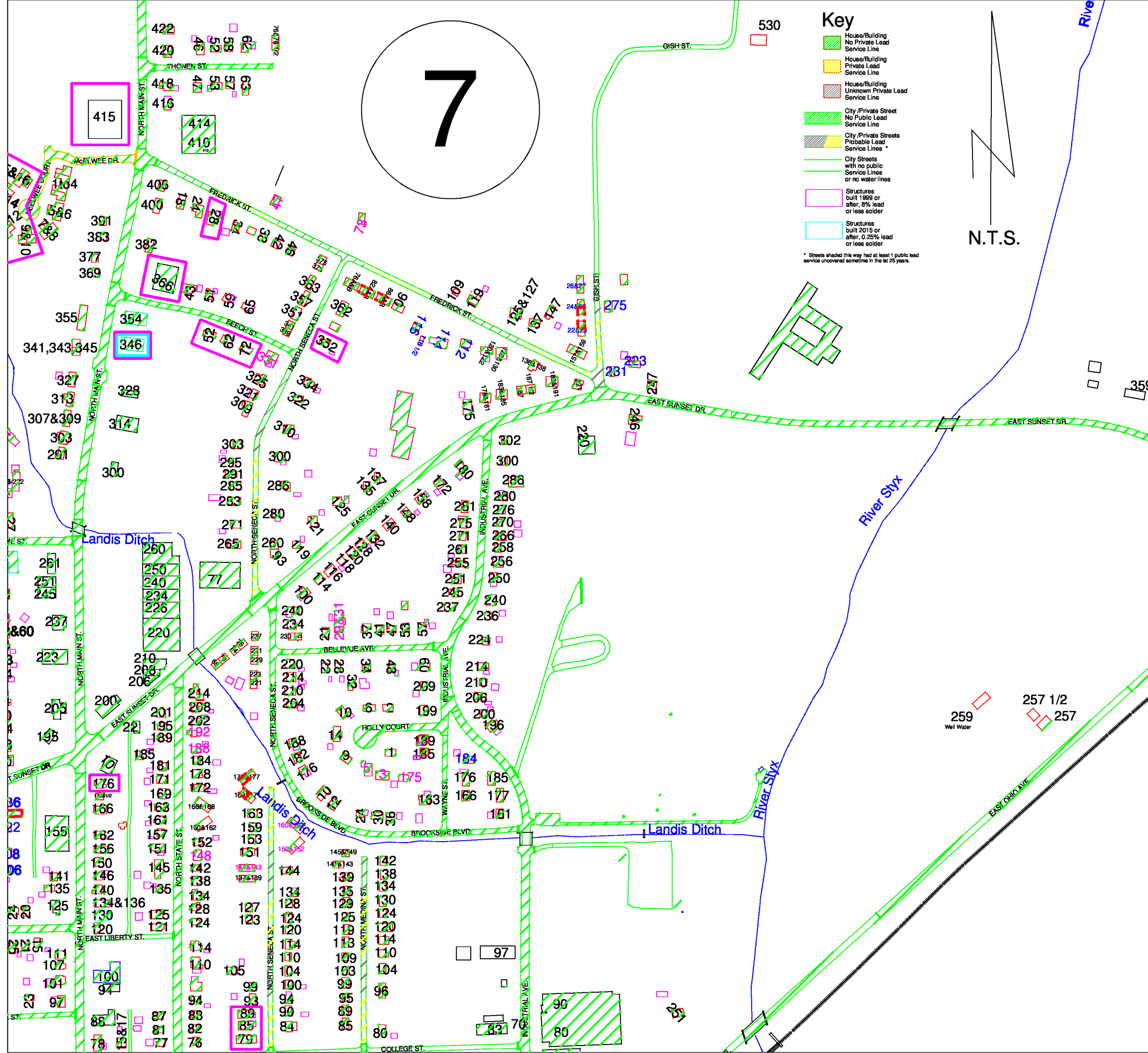
Key

- House/Building
No Private Lead
Service Line
- House/Building
Private Lead
Service Line
- House/Building
Unknown Private Lead
Service Line
- City/Private Street
No Public Lead
Service Line
- City/Private Streets
Probable Lead
Service Lines *
- City Streets
with no public
Service Lines
or no water lines
- Structures
built 1999 or
after, 6% lead
or less solder
- Structures
built 2015 or
after, 0.25% lead
or less solder

* Streets shaded this way had at least 1 public lead service uncovered sometime in the last 25 years.

N.T.S.





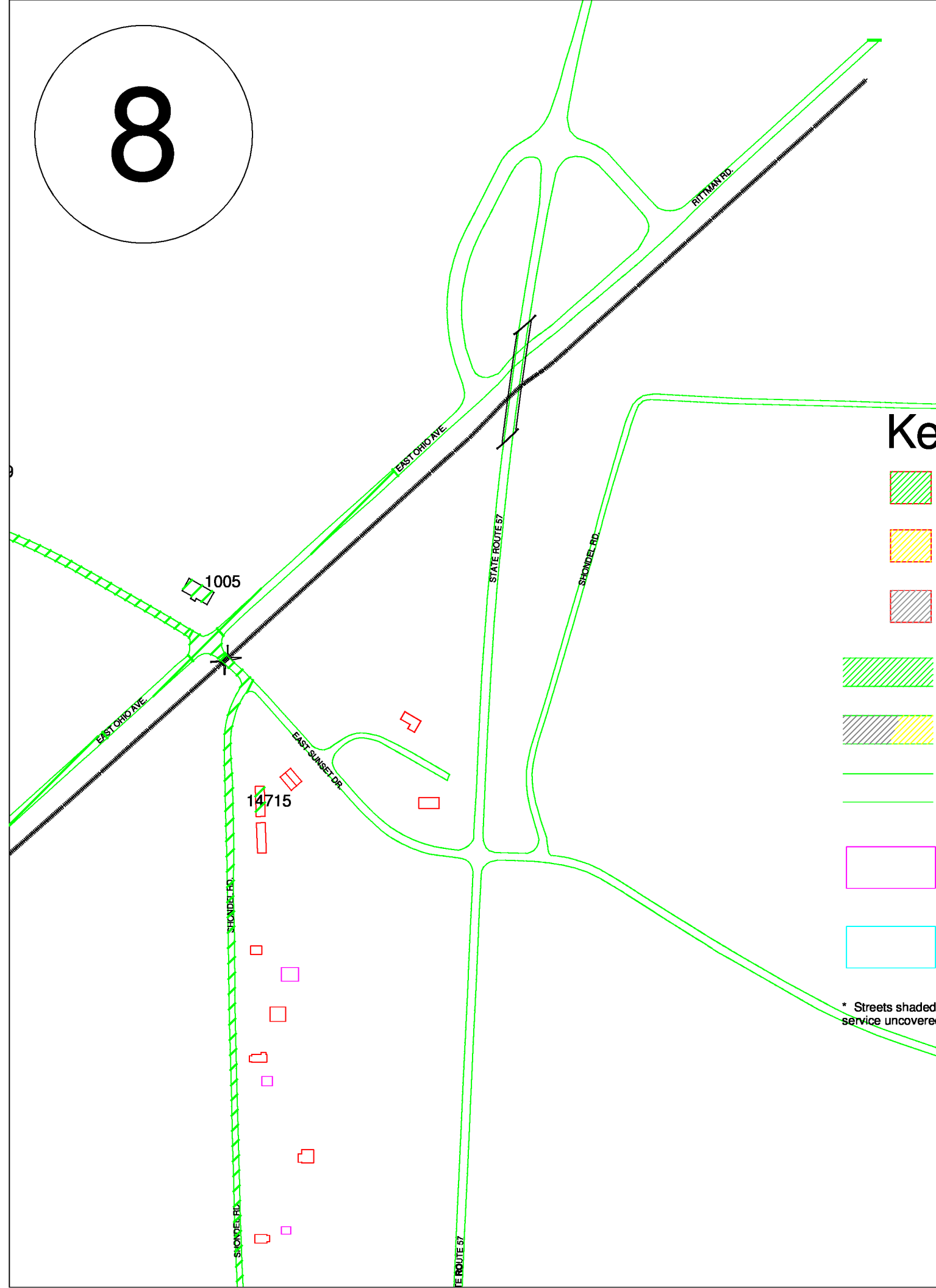
- Key**
- House/Building
No Private Lead
Service Line
 - House/Building
Private Lead
Service Line
 - House/Building
Unknown Private Lead
Service Line
 - City/Private Street
No Public Lead
Service Line
 - City/Private Streets
Probable Lead
Service Lines *
 - City Streets
with no public
Service Lines
or no water lines
 - Structures
built 1999 or
after, 8% lead
or less solder
 - Structures
built 2015 or
after, 0.25% lead
or less solder

* Streets shaded this way had at least 1 public lead service uncovered sometime in the last 25 years.

N.T.S.

7

8



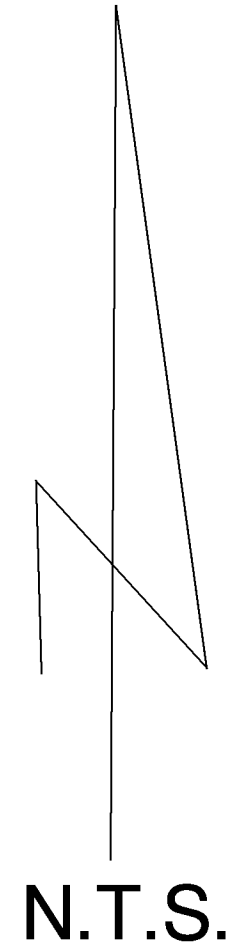
Key

- House/Building No Private Lead Service Line
- House/Building Private Lead Service Line
- House/Building Unknown Private Lead Service Line

- City /Private Street No Public Lead Service Line
- City /Private Streets Probable Lead Service Lines *
- City Streets with no public Service Lines or no water lines

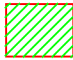
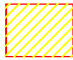
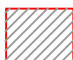
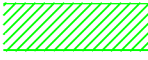
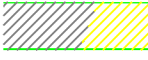
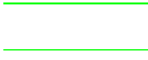


- Structures built 1999 or after, 8% lead or less solder
- Structures built 2015 or after, 0.25% lead or less solder

* Streets shaded this way had at least 1 public lead service uncovered sometime in the last 25 years.



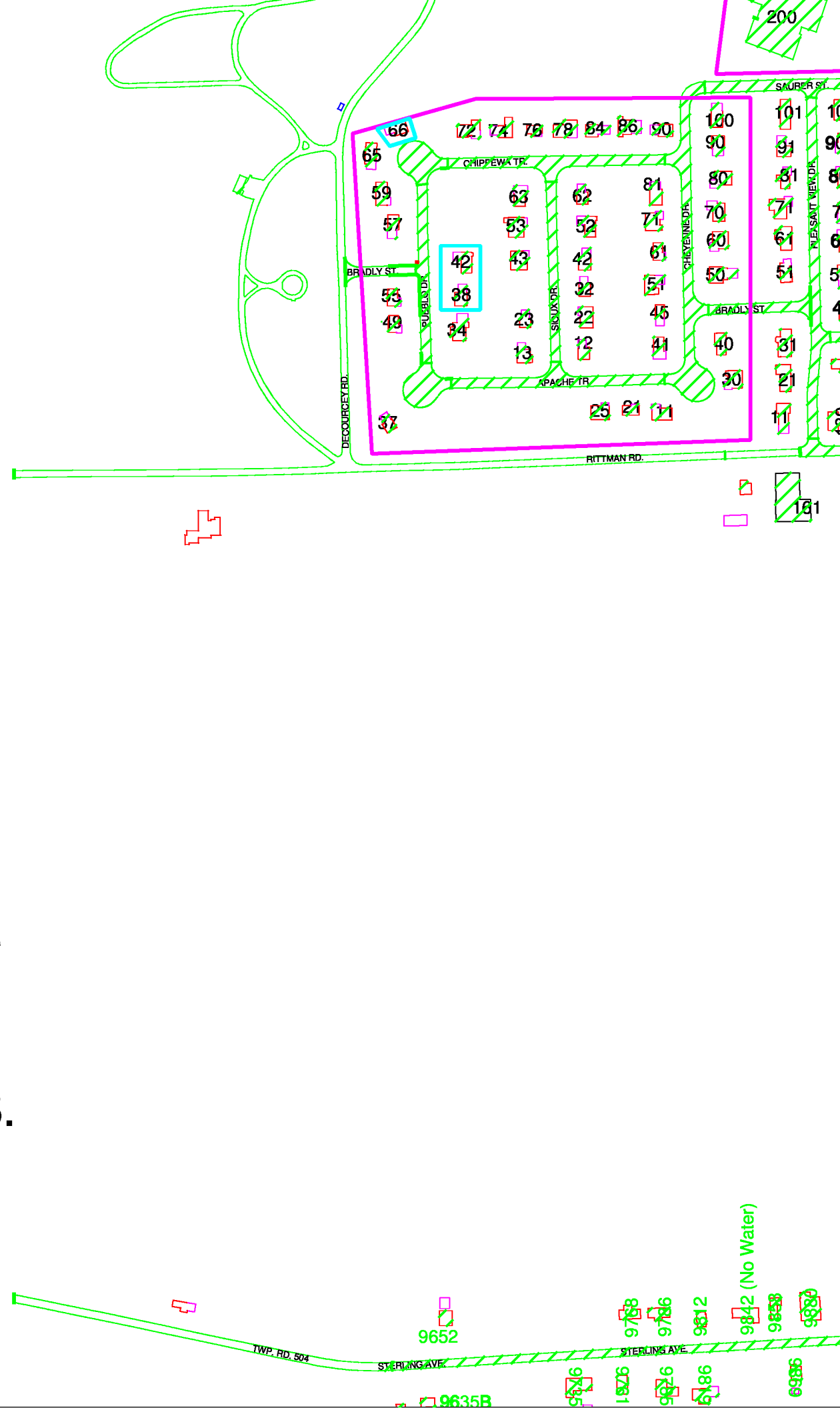
9

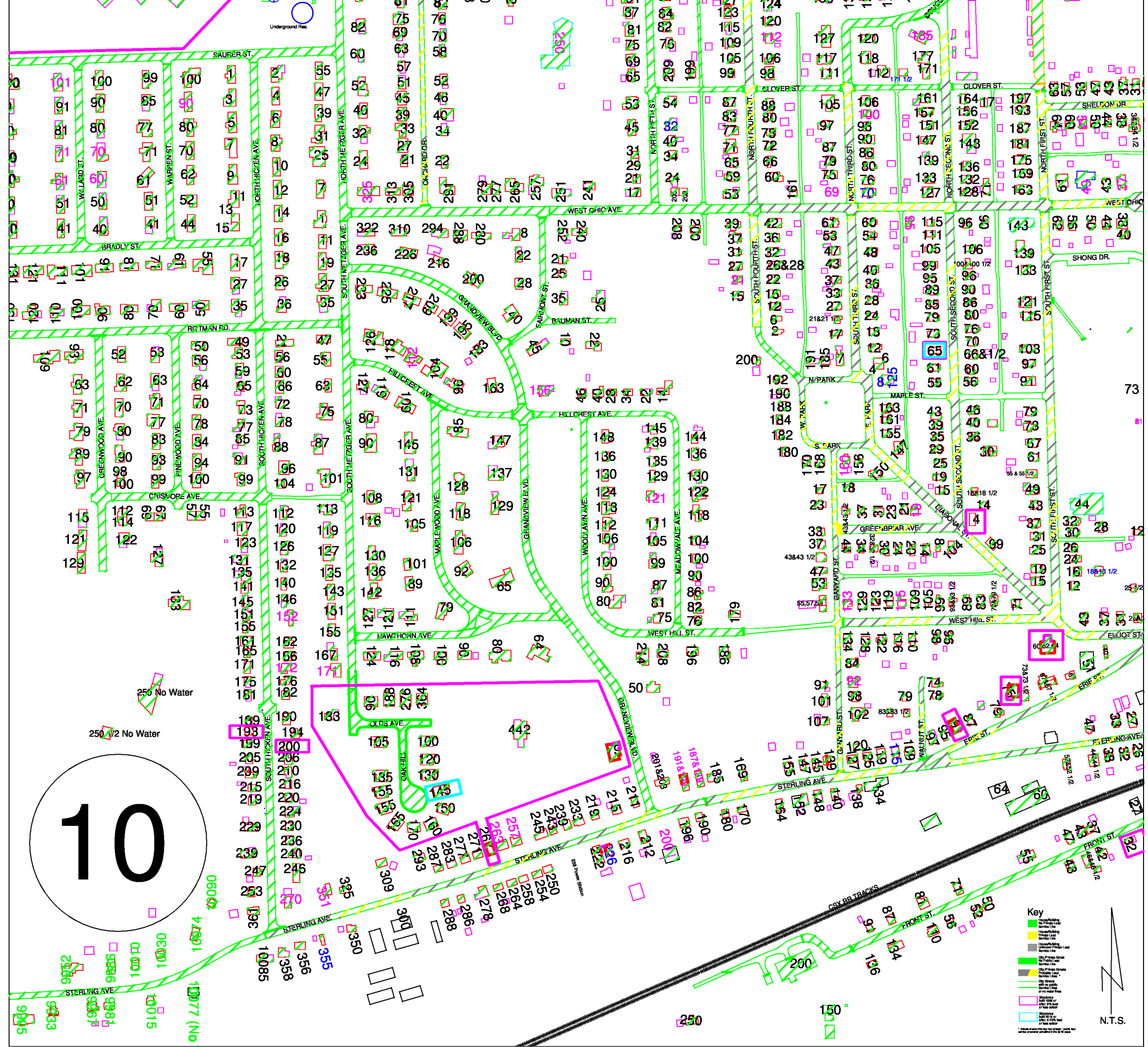
Key

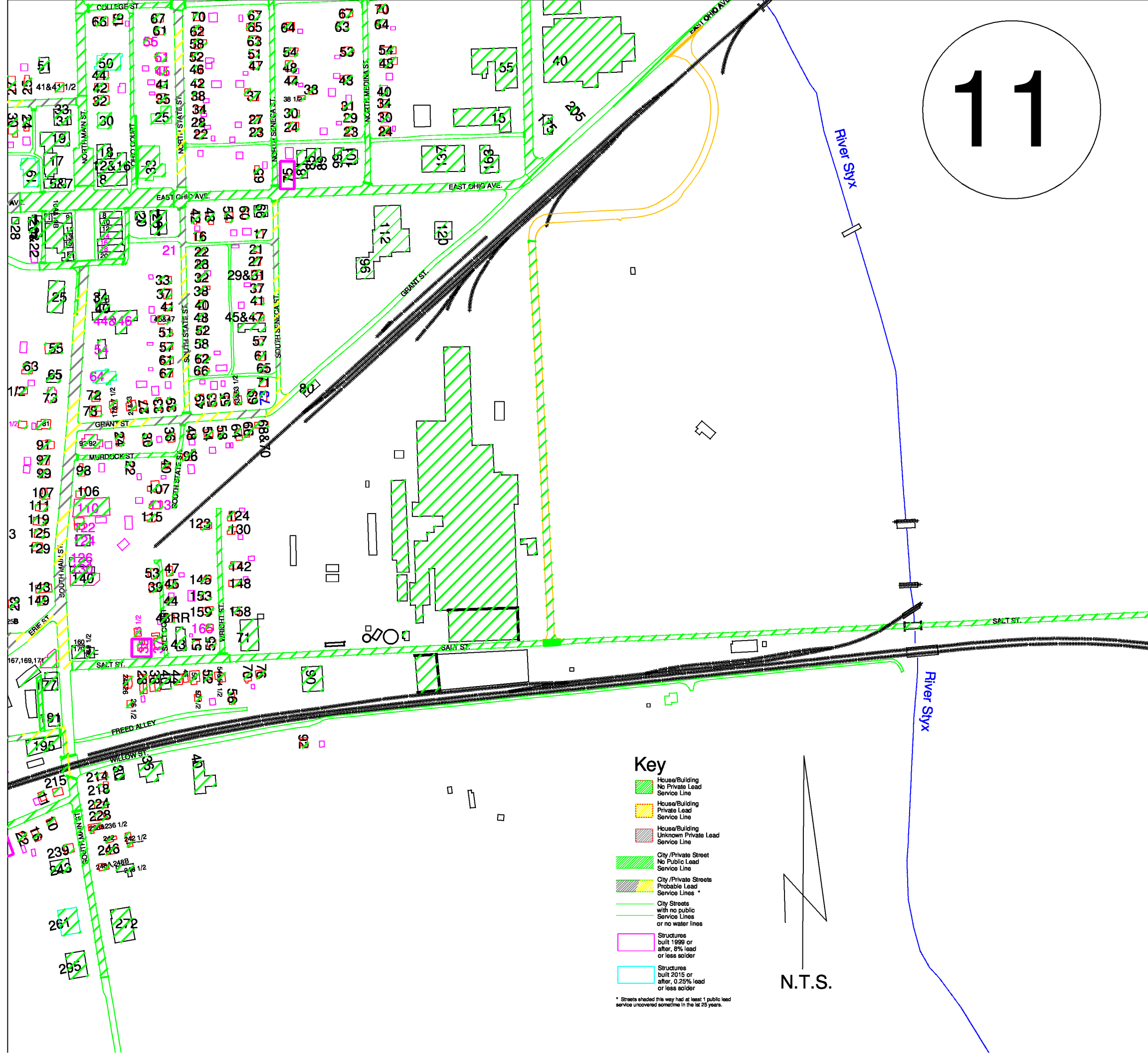
-  House/Building
No Private Lead
Service Line
-  House/Building
Private Lead
Service Line
-  House/Building
Unknown Private Lead
Service Line
-  City /Private Street
No Public Lead
Service Line
-  City /Private Streets
Probable Lead
Service Lines *
-  City Streets
with no public
Service Lines
or no water lines
-  Structures
built 1999 or
after, 8% lead
or less solder
-  Structures
built 2015 or
after, 0.25% lead
or less solder

* Streets shaded this way had at least 1 public lead service uncovered sometime in the last 25 years.

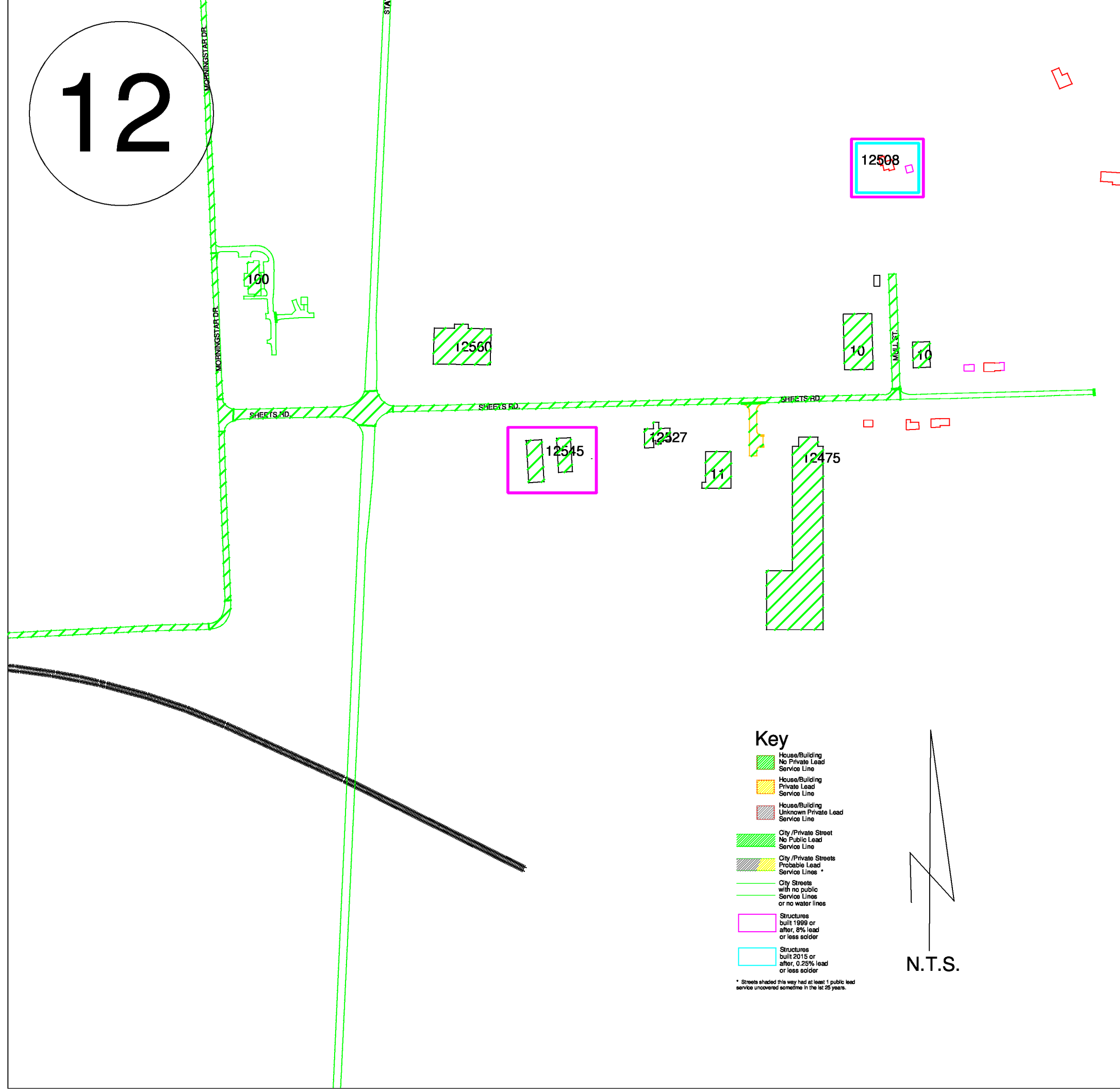
N.T.S.







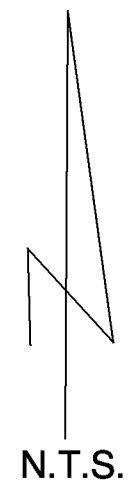
12



Key

- House/Building
No Private Lead
Service Line
- House/Building
Private Lead
Service Line
- House/Building
Unknown Private Lead
Service Line
- City/Private Street
No Public Lead
Service Line
- City/Private Streets
Probable Lead
Service Lines *
- City Streets
with no public
Service Lines
or no water lines
- Structures
built 1999 or
after, 8% lead
or less solder
- Structures
built 2015 or
after, 0.25% lead
or less solder

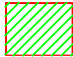
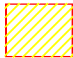
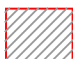
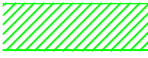
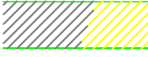
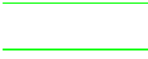


* Streets shaded this way had at least 1 public lead service uncovered sometime in the last 25 years.



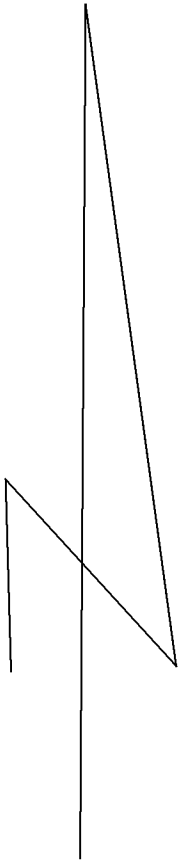


530 480 450

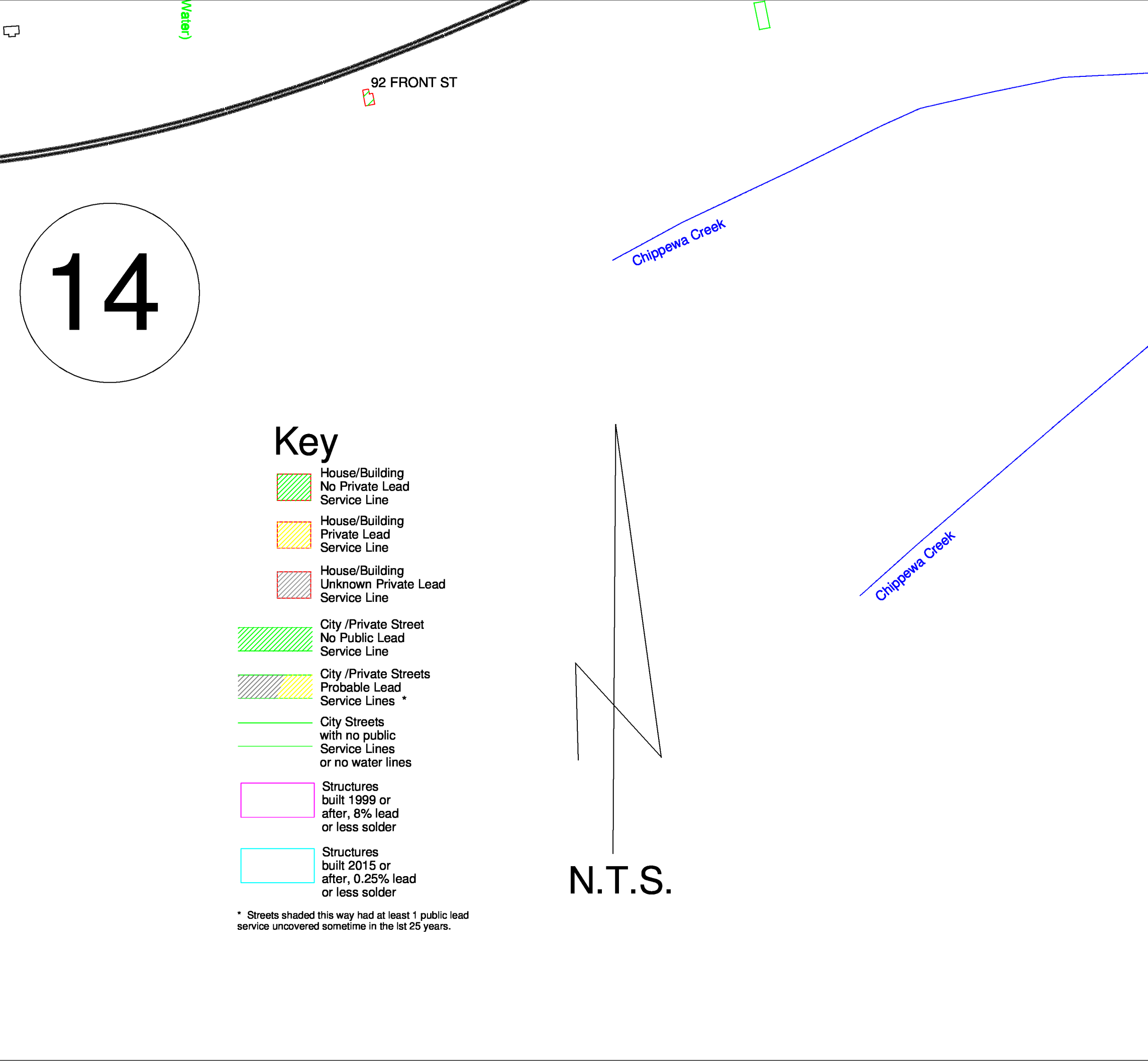
Key

-  House/Building
No Private Lead
Service Line
-  House/Building
Private Lead
Service Line
-  House/Building
Unknown Private Lead
Service Line
-  City /Private Street
No Public Lead
Service Line
-  City /Private Streets
Probable Lead
Service Lines *
-  City Streets
with no public
Service Lines
or no water lines
-  Structures
built 1999 or
after, 8% lead
or less solder
-  Structures
built 2015 or
after, 0.25% lead
or less solder

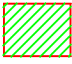
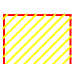
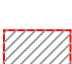
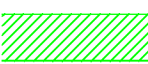
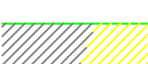



* Streets shaded this way had at least 1 public lead service uncovered sometime in the last 25 years.



N.T.S.



Key

-  House/Building
No Private Lead
Service Line
-  House/Building
Private Lead
Service Line
-  House/Building
Unknown Private Lead
Service Line
-  City /Private Street
No Public Lead
Service Line
-  City /Private Streets
Probable Lead
Service Lines *
-  City Streets
with no public
Service Lines
or no water lines
-  Structures
built 1999 or
after, 8% lead
or less solder
-  Structures
built 2015 or
after, 0.25% lead
or less solder

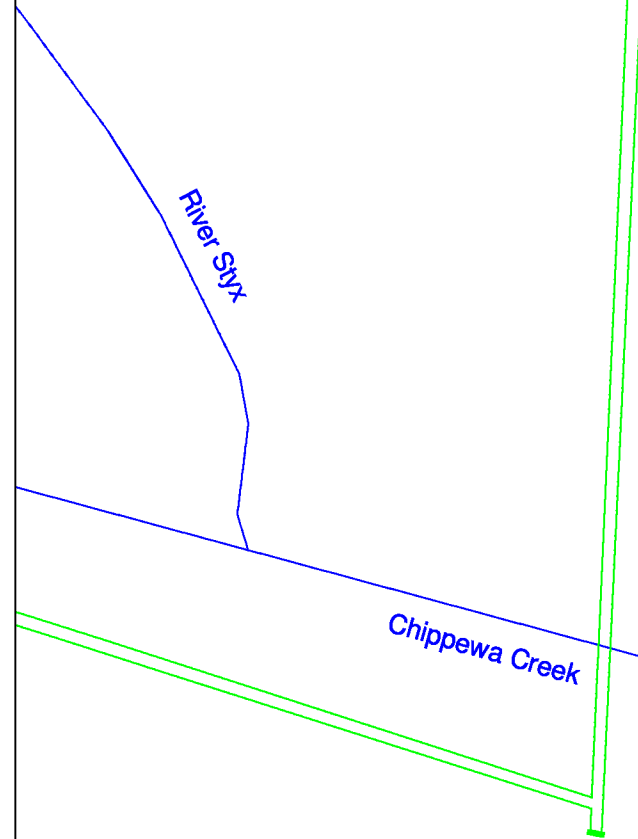
* Streets shaded this way had at least 1 public lead service uncovered sometime in the 1st 25 years.

Approximately 2 miles South is the Apostolic Church and Nursing Home. The 8" PVC line is lead free. Both the Church and Home were built before 1999.

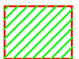
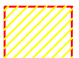
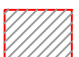
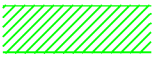
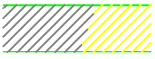



Key

- * Streets shaded this way had at least 1 public lead service uncovered sometime in the last 25 years.

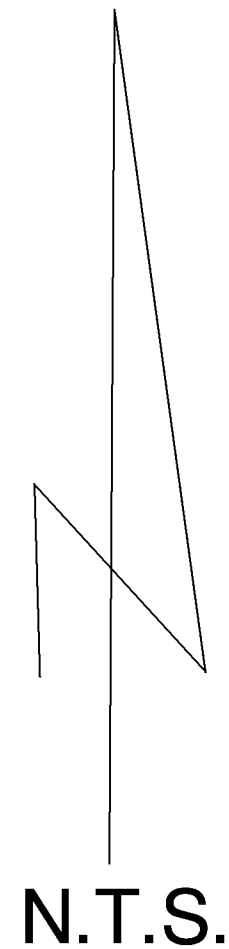
16

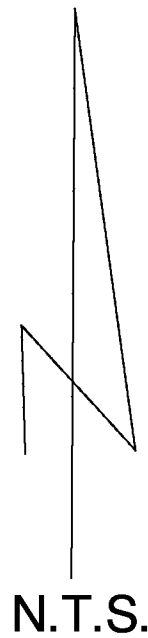


Key

-  House/Building
No Private Lead
Service Line
-  House/Building
Private Lead
Service Line
-  House/Building
Unknown Private Lead
Service Line
-  City /Private Street
No Public Lead
Service Line
-  City /Private Streets
Probable Lead
Service Lines *
-  City Streets
with no public
Service Lines
or no water lines
-  Structures
built 1999 or
after, 8% lead
or less solder
-  Structures
built 2015 or
after, 0.25% lead
or less solder

* Streets shaded this way had at least 1 public lead service uncovered sometime in the last 25 years.

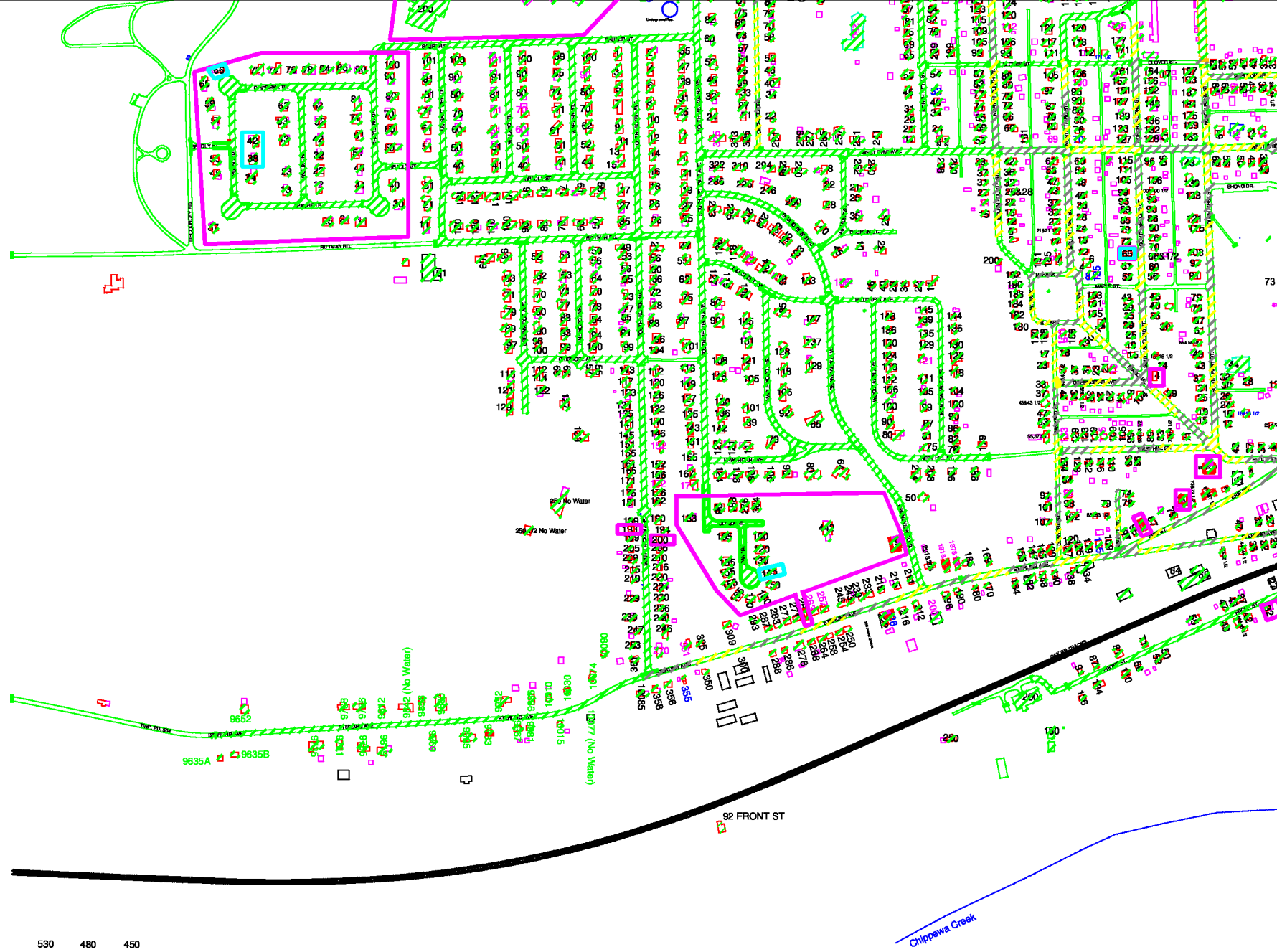




Key

- House/Building
No Private Lead Service Line
- House/Building
Private Lead Service Line
- House/Building
Unknown Private Lead Service Line
- City /Private Street
No Public Lead Service Line
- City /Private Streets
Probable Lead Service Lines *
- City Streets
with no public Service Lines
or no water lines
- Structures
built 1999 or
after, 8% lead
or less solder
- Structures
built 2015 or
after, 0.25% lead
or less solder

* Streets shaded this way had at least 1 public lead service uncovered sometime in the last 25 years.



City of Rittman SW Quadrant