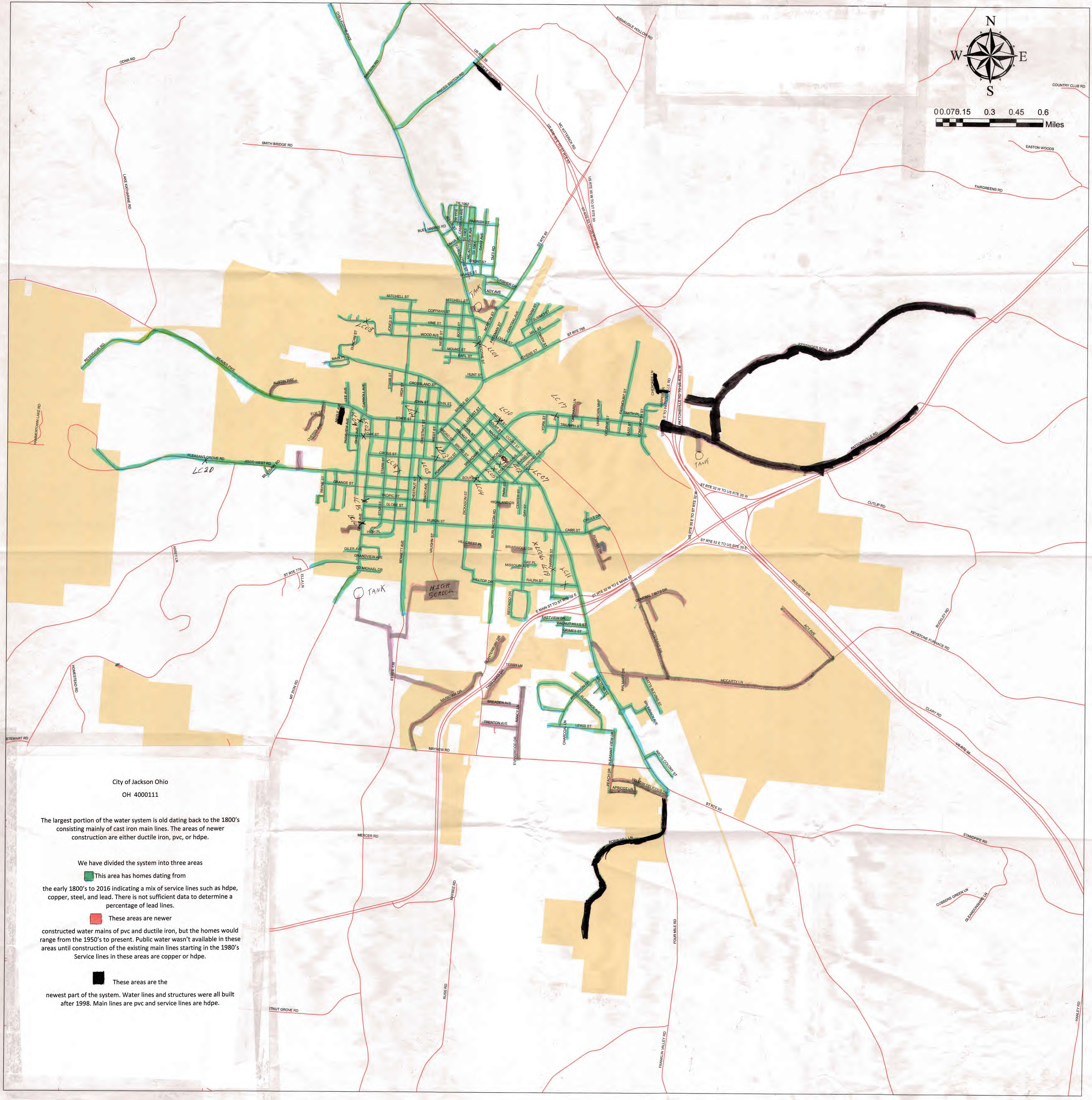





0.076.15 0.3 0.45 0.6
Miles





City of Jackson Ohio
OH 4000111

The largest portion of the water system is old dating back to the 1800's consisting mainly of cast iron main lines. The areas of newer construction are either ductile iron, pvc, or hdpe.

We have divided the system into three areas

 This area has homes dating from the early 1800's to 1916 indicating a mix of service lines such as hdpe, copper, steel, and lead. There is not sufficient data to determine a percentage of lead lines.

 These areas are newer constructed water mains of pvc and ductile iron, but the homes would range from the 1950's to present. Public water wasn't available in these areas until construction of the existing main lines starting in the 1980's. Service lines in these areas are copper or hdpe.

 These areas are the newest part of the system. Water lines and structures were all built after 1998. Main lines are pvc and service lines are hdpe.