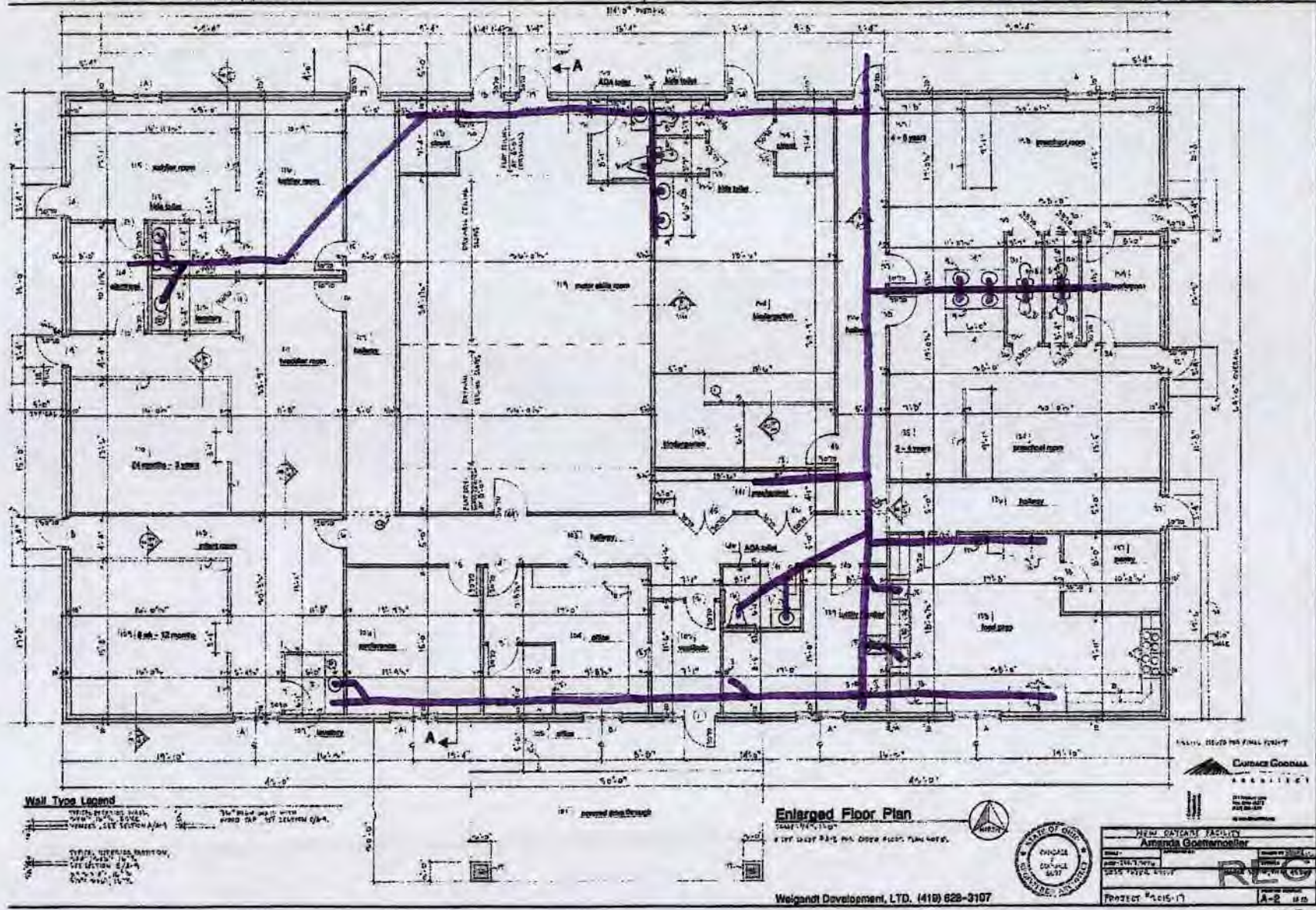


RE: Daycare Discoveries LLC
Report
Drinking Water Program
Mercer County
PWS ID: OH5442017

Daycare Discoveries
2016 installation

PVC piping
3/4" main
3/8" to fixture

Cold Water



Wall Type Legend
THICK REINFORCED CONCRETE WALL WITH 2" REINFORCING BARS AND 1/2" REINFORCING CHAIRS. SEE SECTION 5.1.1.1.
THIN REINFORCED CONCRETE WALL WITH 1/2" REINFORCING BARS AND 1/4" REINFORCING CHAIRS. SEE SECTION 5.1.1.2.

Enlarged Floor Plan
SCALE: 1/8" = 1'-0"



NEW DAYCARE FACILITY	
Amelia Goetscheller	
Project # 2015-17	A-2

Weigandt Development, LTD. (416) 628-3107

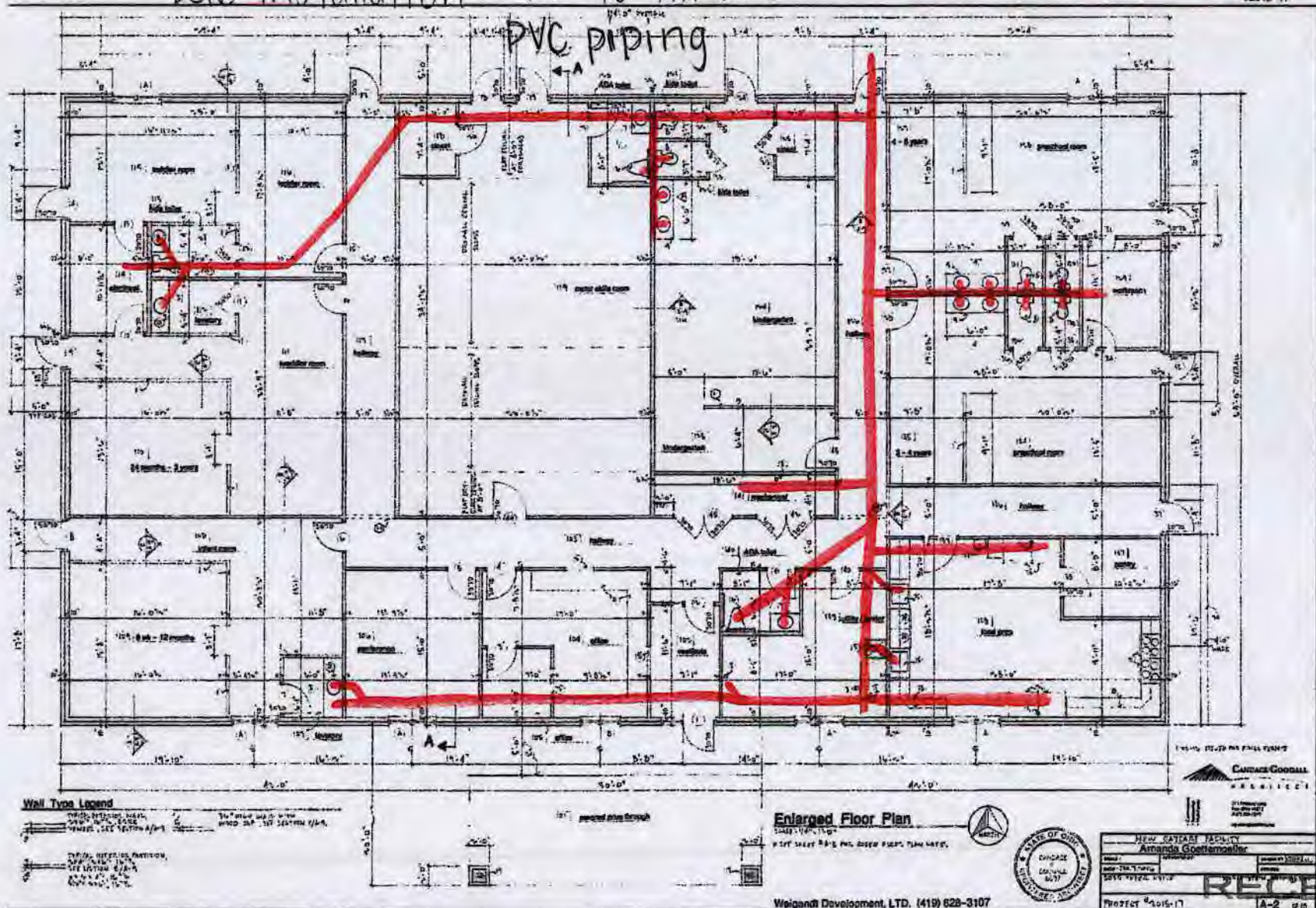
RECEIVED
MAR 06 2017
DDAGW - NWDO

Daycare Discoveries
2016 installation

3/4" main
3/8" to fixture

Hot Water

#2015-17



Weigand Development, LTD. (419) 628-3107

MAR 06 2017

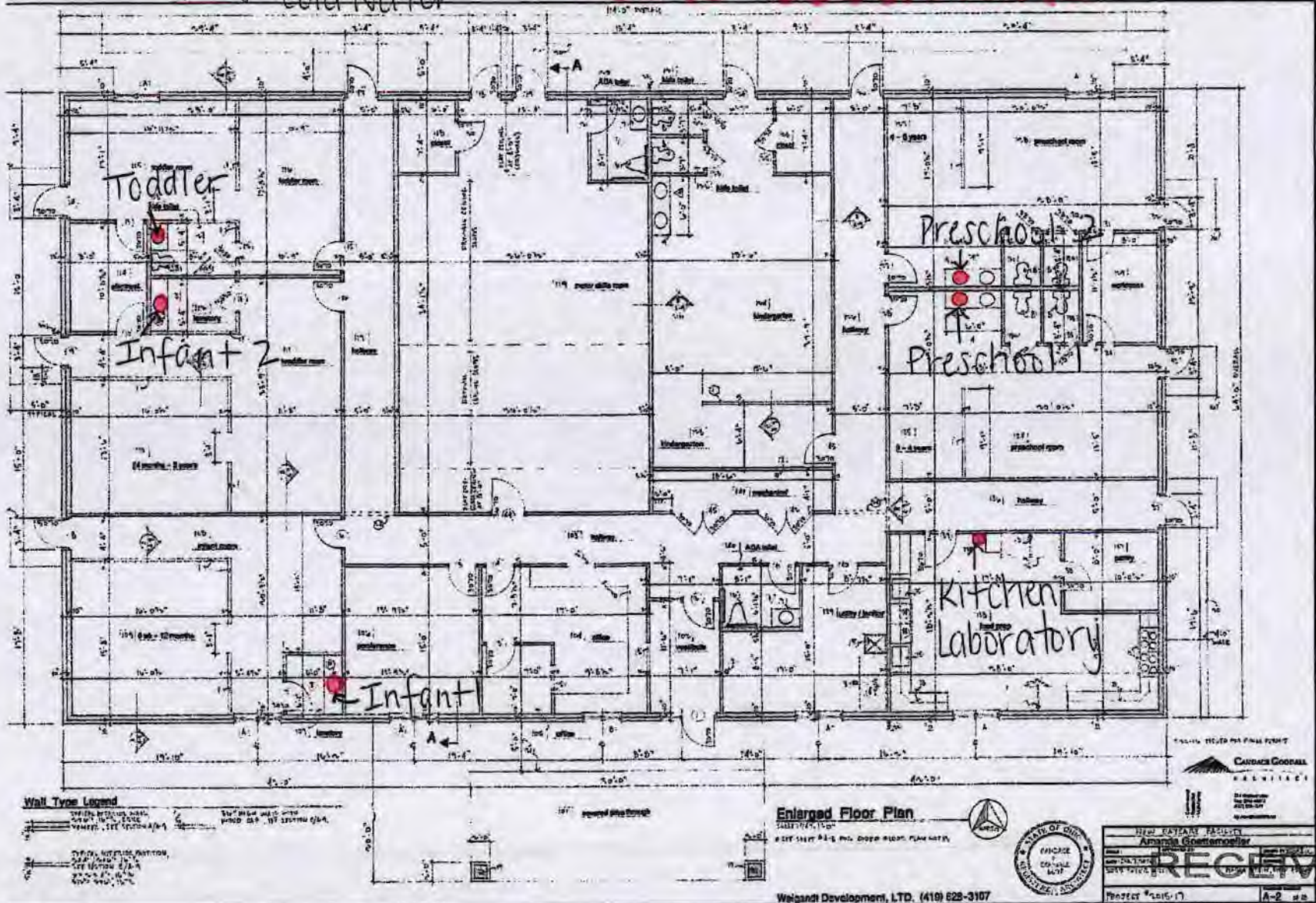
DDAGW - NWDO

Daycare Discoveries

*all sampling done with cold water

Lead + Copper Sample Site Locations

#2015-17



MAR 06 2017
DDAGW - NWDO