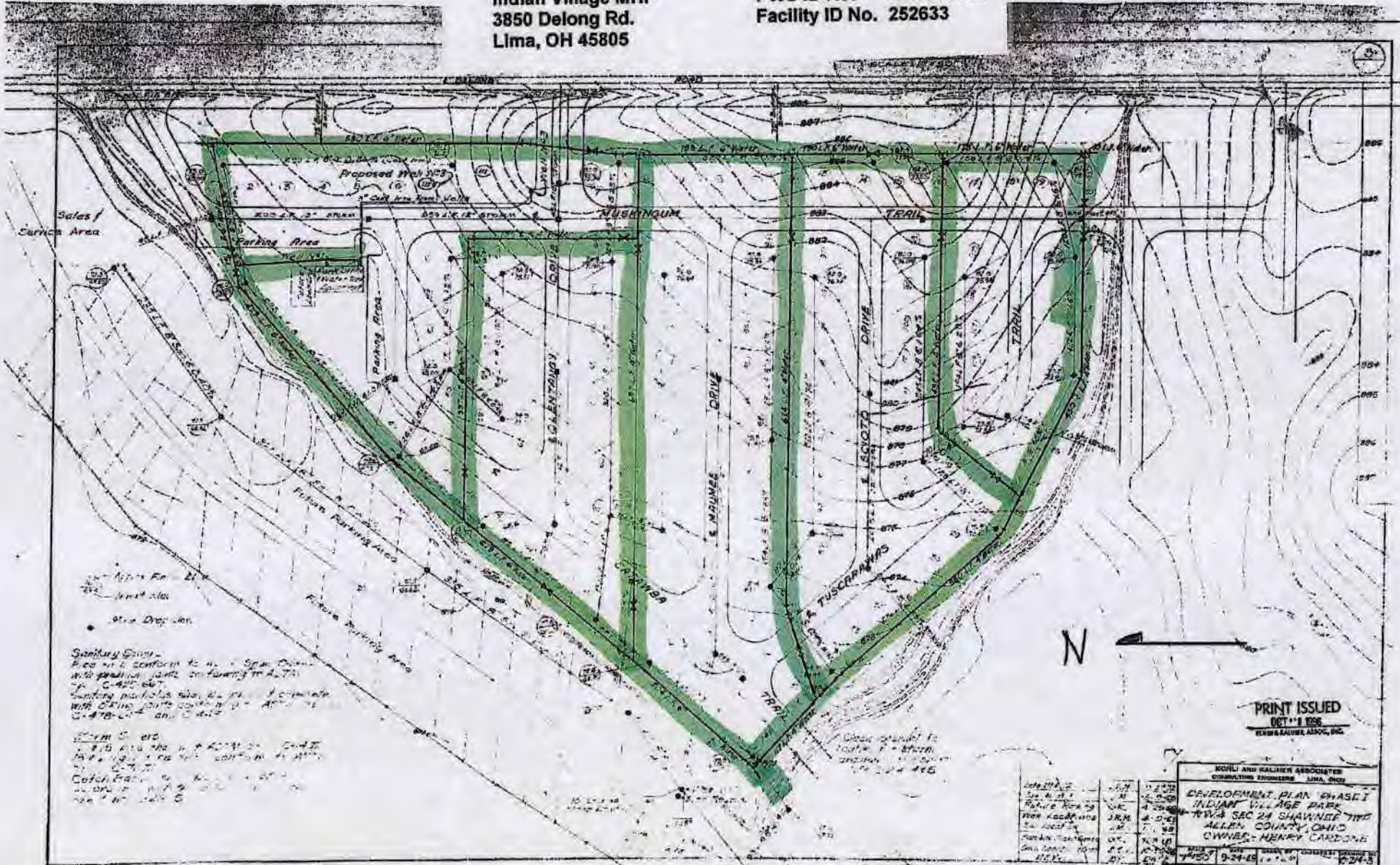


RE: Indian Village Mobile Home Park
Report
Drinking Water Program
Allen County
PWS ID: OH0200712

Indian Village MHP
 3850 Delong Rd.
 Lima, OH 45805

PWS ID No. OH0200712
 Facility ID No. 252633



Sanitary Sewer -
 Pipe will conform to 4" x 6" Spun Concrete
 with precast joints conforming to A.S.T.M.
 C-400 S.D.T.
 Sanitary manholes also to be 4' diameter
 with 24" concrete pipe with 12" A.S.T.M.
 C-478-20" and 12" dia.

Storm Sewer -
 18" dia. pipe to be 4' dia. concrete
 with 18" dia. precast joints conforming to A.S.T.M.
 C-478-20" and 12" dia.

Other Notes -
 1. All work to be done in accordance with
 the plans and specifications.
 2. All work to be done in accordance with
 the plans and specifications.



PRINT ISSUED
 OCT 11 1956
 KIMBA RAUBER, ASSOC., INC.

KOFEL AND KALLIEN ASSOCIATES CONSULTING ENGINEERS LIMA, OHIO			
DATE	BY	REVISION	
11-2-56	J.M.	1. PREPARED	
11-2-56	J.M.	2. CHECKED	
11-2-56	J.M.	3. APPROVED	
11-2-56	J.M.	4. REVISION	
11-2-56	J.M.	5. REVISION	
11-2-56	J.M.	6. REVISION	
11-2-56	J.M.	7. REVISION	
11-2-56	J.M.	8. REVISION	
11-2-56	J.M.	9. REVISION	
11-2-56	J.M.	10. REVISION	
11-2-56	J.M.	11. REVISION	
11-2-56	J.M.	12. REVISION	
11-2-56	J.M.	13. REVISION	
11-2-56	J.M.	14. REVISION	
11-2-56	J.M.	15. REVISION	
11-2-56	J.M.	16. REVISION	
11-2-56	J.M.	17. REVISION	
11-2-56	J.M.	18. REVISION	
11-2-56	J.M.	19. REVISION	
11-2-56	J.M.	20. REVISION	
11-2-56	J.M.	21. REVISION	
11-2-56	J.M.	22. REVISION	
11-2-56	J.M.	23. REVISION	
11-2-56	J.M.	24. REVISION	
11-2-56	J.M.	25. REVISION	
11-2-56	J.M.	26. REVISION	
11-2-56	J.M.	27. REVISION	
11-2-56	J.M.	28. REVISION	
11-2-56	J.M.	29. REVISION	
11-2-56	J.M.	30. REVISION	
11-2-56	J.M.	31. REVISION	
11-2-56	J.M.	32. REVISION	
11-2-56	J.M.	33. REVISION	
11-2-56	J.M.	34. REVISION	
11-2-56	J.M.	35. REVISION	
11-2-56	J.M.	36. REVISION	
11-2-56	J.M.	37. REVISION	
11-2-56	J.M.	38. REVISION	
11-2-56	J.M.	39. REVISION	
11-2-56	J.M.	40. REVISION	
11-2-56	J.M.	41. REVISION	
11-2-56	J.M.	42. REVISION	
11-2-56	J.M.	43. REVISION	
11-2-56	J.M.	44. REVISION	
11-2-56	J.M.	45. REVISION	
11-2-56	J.M.	46. REVISION	
11-2-56	J.M.	47. REVISION	
11-2-56	J.M.	48. REVISION	
11-2-56	J.M.	49. REVISION	
11-2-56	J.M.	50. REVISION	
11-2-56	J.M.	51. REVISION	
11-2-56	J.M.	52. REVISION	
11-2-56	J.M.	53. REVISION	
11-2-56	J.M.	54. REVISION	
11-2-56	J.M.	55. REVISION	
11-2-56	J.M.	56. REVISION	
11-2-56	J.M.	57. REVISION	
11-2-56	J.M.	58. REVISION	
11-2-56	J.M.	59. REVISION	
11-2-56	J.M.	60. REVISION	
11-2-56	J.M.	61. REVISION	
11-2-56	J.M.	62. REVISION	
11-2-56	J.M.	63. REVISION	
11-2-56	J.M.	64. REVISION	
11-2-56	J.M.	65. REVISION	
11-2-56	J.M.	66. REVISION	
11-2-56	J.M.	67. REVISION	
11-2-56	J.M.	68. REVISION	
11-2-56	J.M.	69. REVISION	
11-2-56	J.M.	70. REVISION	
11-2-56	J.M.	71. REVISION	
11-2-56	J.M.	72. REVISION	
11-2-56	J.M.	73. REVISION	
11-2-56	J.M.	74. REVISION	
11-2-56	J.M.	75. REVISION	
11-2-56	J.M.	76. REVISION	
11-2-56	J.M.	77. REVISION	
11-2-56	J.M.	78. REVISION	
11-2-56	J.M.	79. REVISION	
11-2-56	J.M.	80. REVISION	
11-2-56	J.M.	81. REVISION	
11-2-56	J.M.	82. REVISION	
11-2-56	J.M.	83. REVISION	
11-2-56	J.M.	84. REVISION	
11-2-56	J.M.	85. REVISION	
11-2-56	J.M.	86. REVISION	
11-2-56	J.M.	87. REVISION	
11-2-56	J.M.	88. REVISION	
11-2-56	J.M.	89. REVISION	
11-2-56	J.M.	90. REVISION	
11-2-56	J.M.	91. REVISION	
11-2-56	J.M.	92. REVISION	
11-2-56	J.M.	93. REVISION	
11-2-56	J.M.	94. REVISION	
11-2-56	J.M.	95. REVISION	
11-2-56	J.M.	96. REVISION	
11-2-56	J.M.	97. REVISION	
11-2-56	J.M.	98. REVISION	
11-2-56	J.M.	99. REVISION	
11-2-56	J.M.	100. REVISION	

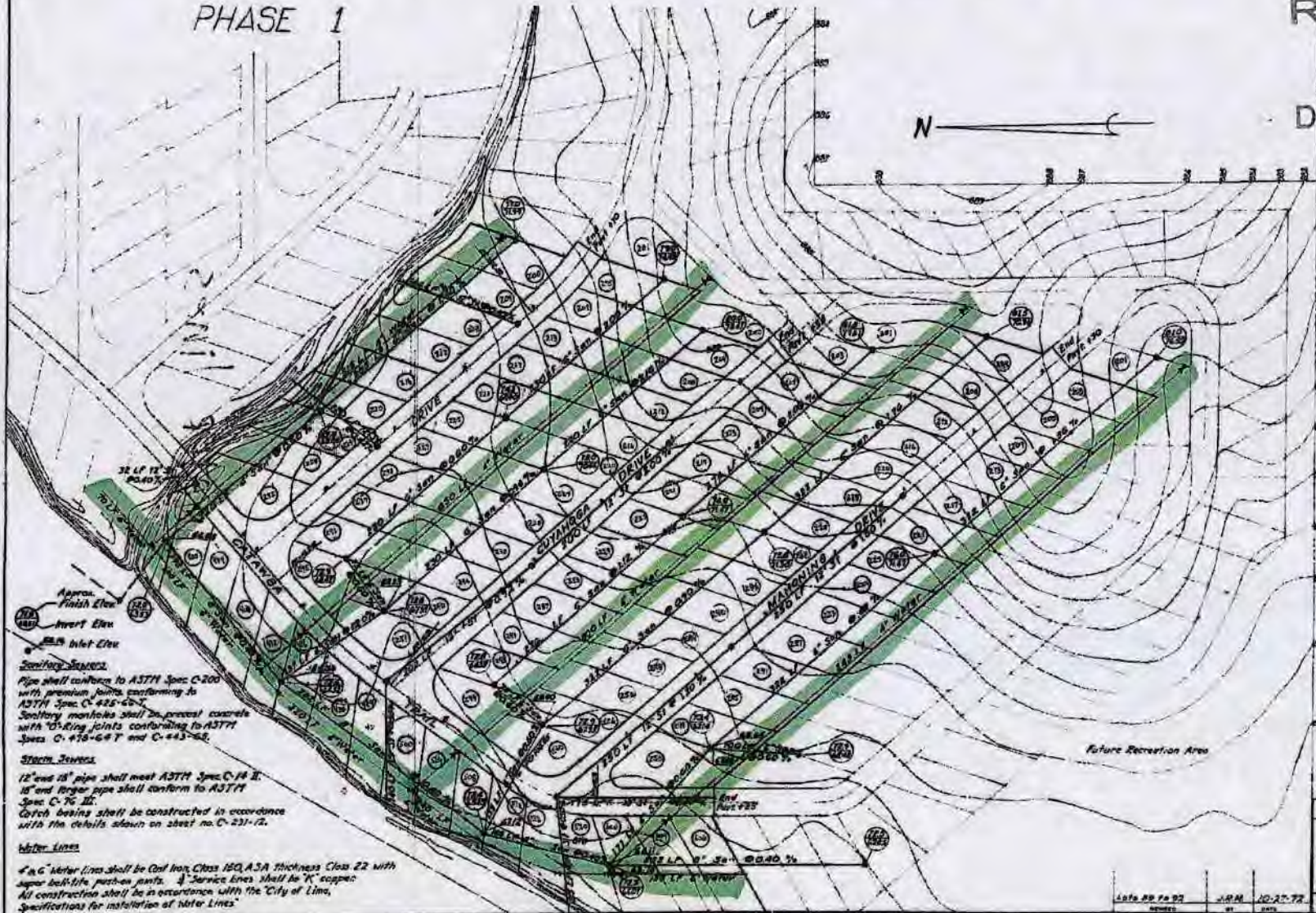
RECEIVED
 MAR 05 2017
 DDAGW - NWDO

Indian Village MHP
3850 Delong Rd.
Lima, OH 45805

PWS ID No. OH0200712
Facility ID No. 252633

PHASE 1

RECEIVED
MAR 05 2017
DDAGW - NWDO

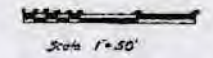


Approx. Finish Elev. 204.07
Invert Elev. 204.07
Inlet Elev. 204.07

Sanitary Sewers
Pipe shall conform to ASTM Spec. C-200 with premium joints conforming to ASTM Spec. C-425-60-7. Sanitary manholes shall be precast concrete with O-Ring joints conforming to ASTM Specs. C-438-60-T and C-443-60.

Storm Sewers
12" and 18" pipe shall meet ASTM Spec. C-14 II. 18" and larger pipe shall conform to ASTM Spec. C-76 III. Catch basins shall be constructed in accordance with the details shown on sheet no. C-231-12.

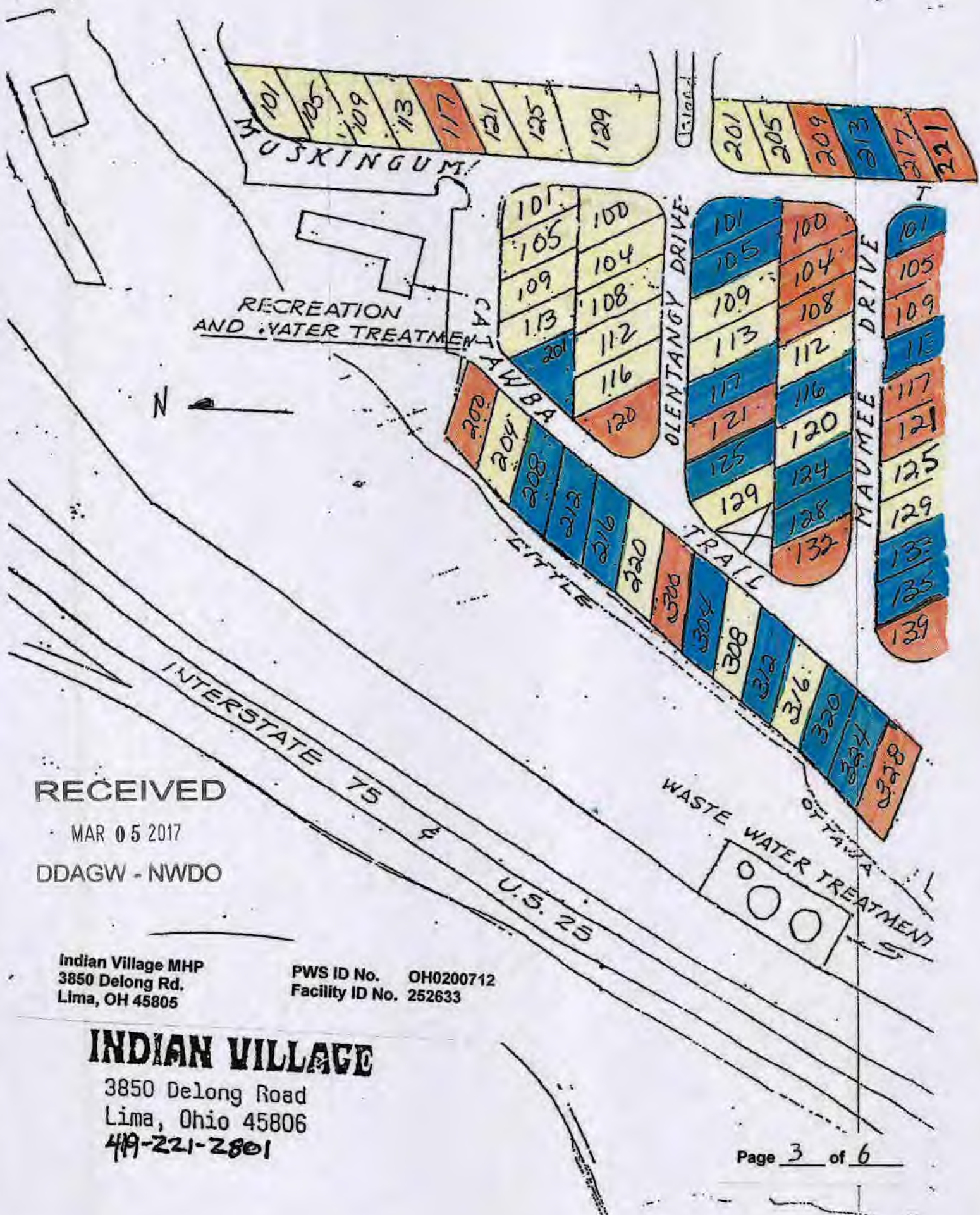
Water Lines
4" & 6" Water Lines shall be Cast Iron, Class 150, ASA Thickness Class 22 with super bell-life push-on joints. 4" Service Lines shall be "K" scopes. All construction shall be in accordance with the City of Lima. Specifications for installation of Water Lines.



KORLI AND KALINER ASSOCIATES
CONSULTING ENGINEERS
LIMA, OHIO

DEVELOPMENT PLAN-PHASE II
INDIAN VILLAGE PARK
NW 1/4 SEC. 24 SHAWNEE TOWNSHIP
ALLEN COUNTY, OHIO
OMYER-HENRY CARDONE

DATE	BY	CHKD BY	APPROVED BY
10-27-12	JRM	DLB	DLB
08-23-13			



RECEIVED

MAR 05 2017

DDAGW - NWDO

Indian Village MHP
 3850 Delong Rd.
 Lima, OH 45805

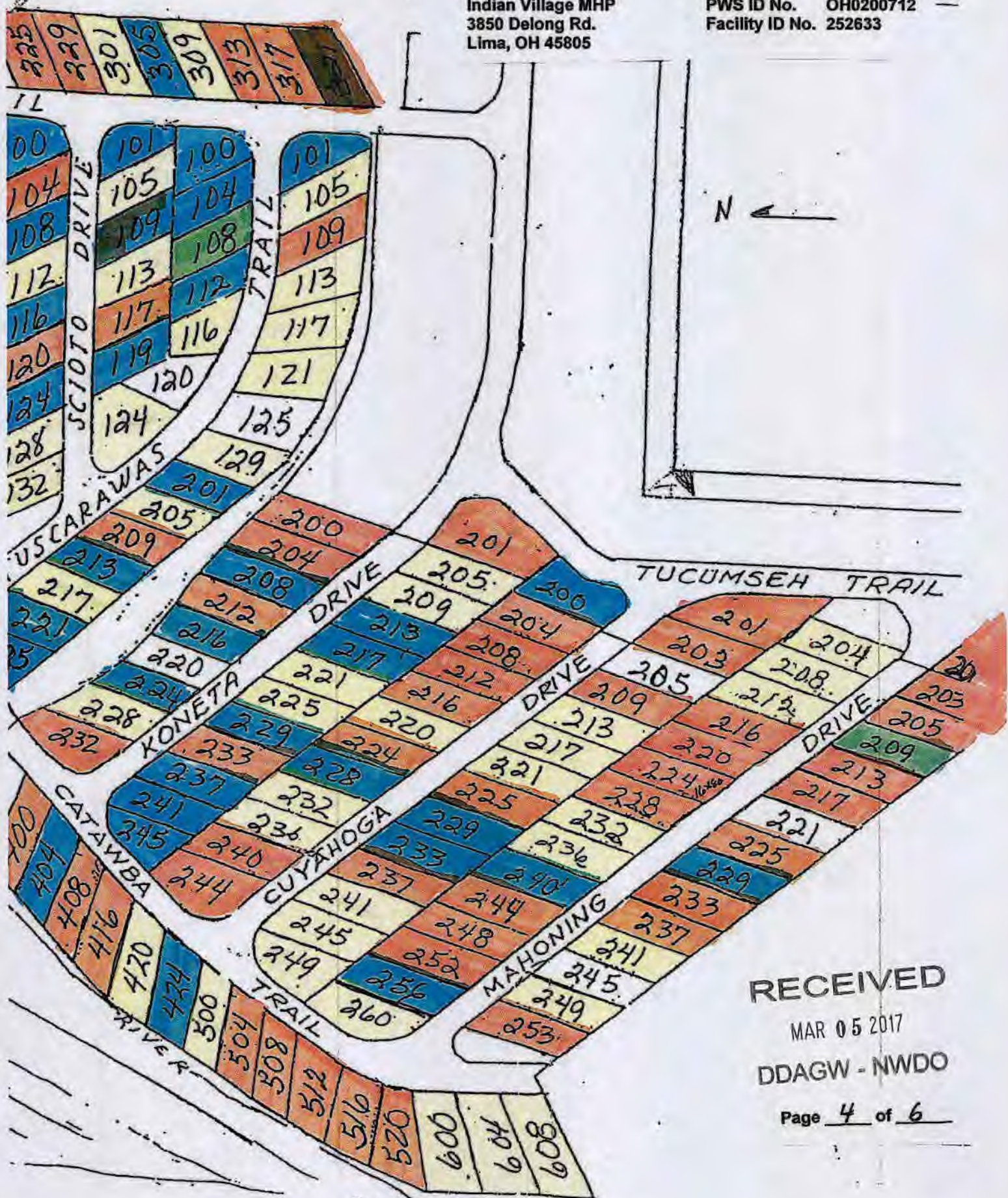
PWS ID No. OH0200712
 Facility ID No. 252633

INDIAN VILLAGE

3850 Delong Road
 Lima, Ohio 45806
 419-221-2801

Indian Village MHP
3850 DeLong Rd.
Lima, OH 45805

PWS ID No. OH0200712
Facility ID No. 252633



RECEIVED

MAR 05 2017

DDAGW - NWDO

Page 4 of 6

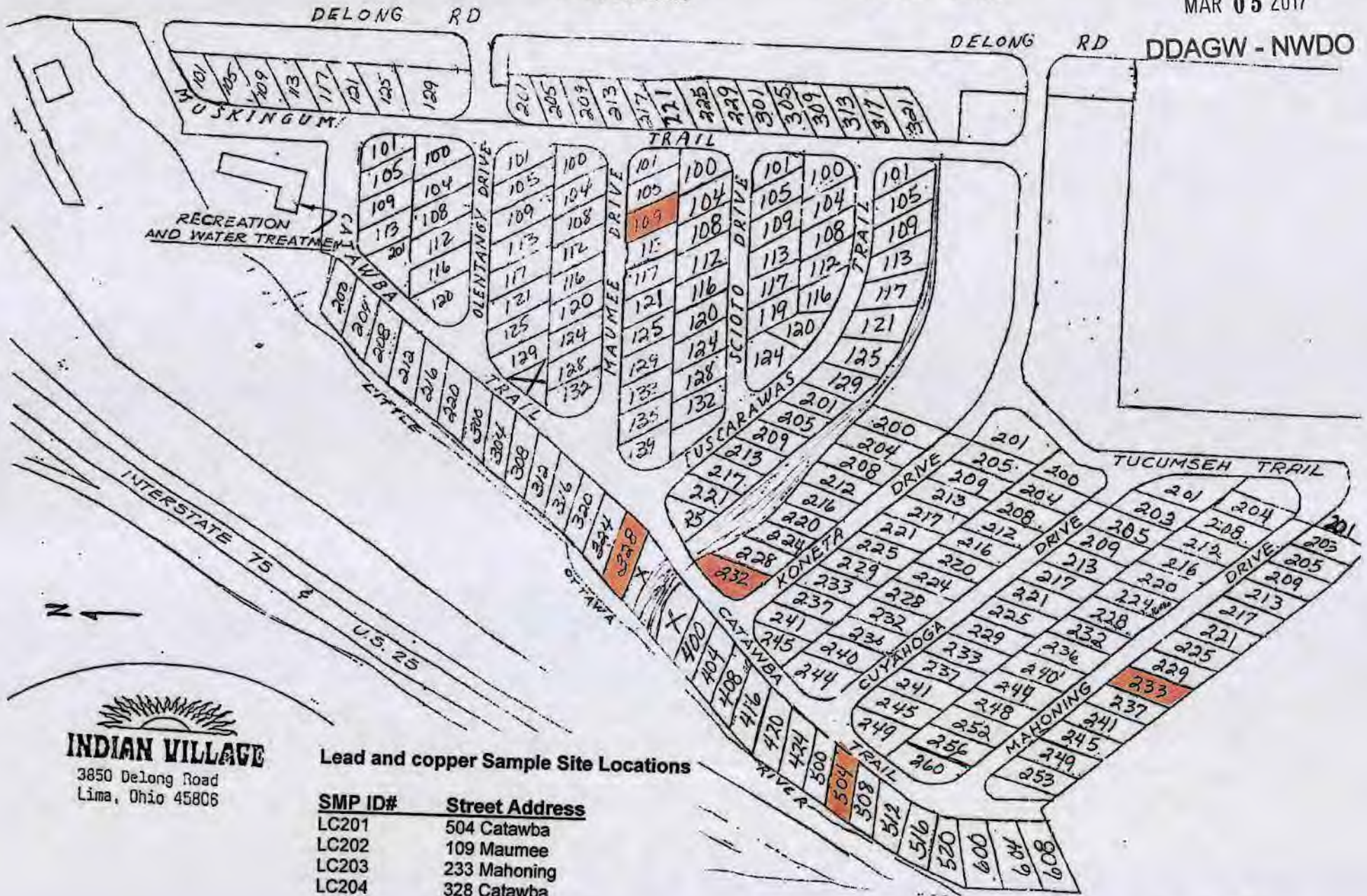
Indian Village MHP
3850 DeLong Rd.
Lima, OH 45805

PWS ID No. OH0200712
Facility ID No. 252633

RECEIVED

MAR 05 2017

DDAGW - NWDO



INDIAN VILLAGE
3850 DeLong Road
Lima, Ohio 45805

Lead and copper Sample Site Locations

SMP ID#	Street Address
LC201	504 Catawba
LC202	109 Maumee
LC203	233 Mahoning
LC204	328 Catawba
LC205	232 Koneta

Date: March 3, 2017

Indian Village MHP Lead Mapping additional information

The Mobile Home Park is listed as a class 1 community public water supply system.

Address is: 3850 Delong Rd.

Telephone No. 419 221-2801

The PWS ID No. is OH0200712 and the Facility ID is 252633

The Mobile Home Park has 204 spaces for mobile homes with 53 vacant lots.

The Mobile home park was originally constructed in the late 60's with an addition referred as phase 1 constructed in the early 70's.

The Water mains consist of 4" and 6" inch cast iron, class 150 super bell tite push on joints., with service lines consisting of K copper pipe.

The map included on page 1 and 2 is color coded as follows:

Green - Water mains

The maps included on pages 3 and 4 indicate the year of construction for that trailer and is color coded as follows:

Yellow - Trailers built before 1986

Orange - Trailers built between 1986-2013

Green - Trailers built 2014 or newer

Blue - are vacant with no building currently on lot.

Page 5 is a map indicating where the lead and copper sample sites are located with the SMP # and addresses indicated on chart bottom center of page.

It is believed that while a lot or most trailers have plastic piping the faucets and fixtures could be made of brass as well as the service lines could have brass fittings as well.

All submitted information compiled by Ronald Suter, please direct any questions to my attention:

Ronald Suter
Operator of record
Five Point MHP
Tele: 419 806-6828
E-Mail rrsuter@yahoo.com

Trace Meyer
Property Owner
Five Point MHP
Tele: 419 893-4879
E-Mail trace@pmc1.com

RECEIVED

MAR 05 2017

DDAGW - NWDO